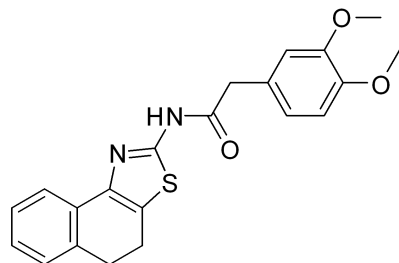


12.366

-0.001

ZINC00881524 HNMR Analysis in DMSO



MedKoo Cat#: 530918
 Name: ZINC00881524
 CAS#: 557782-81-7
 Lot#: A20T05K26
 Chemical Formula: C₂₁H₂₀N₂O₃S
 Exact Mass: 380.1195
 Molecular Weight: 380.46

7.664
7.645
7.288
7.270
7.265
7.251
7.246
7.204
7.202
7.186
7.167
7.165
6.965
6.960
6.917
6.897
6.867
6.863
6.847
6.842
3.753
3.726
3.683
3.331
3.001
2.996
2.979
2.961
2.927
2.912
2.908
2.902
2.892
2.885
2.512
2.508
2.503
2.499

0.96

1.00
2.05
1.03
1.02
1.03
1.02

3.02
3.09
2.00
2.02
2.04

12

10

8

6

4

2

0

PPM

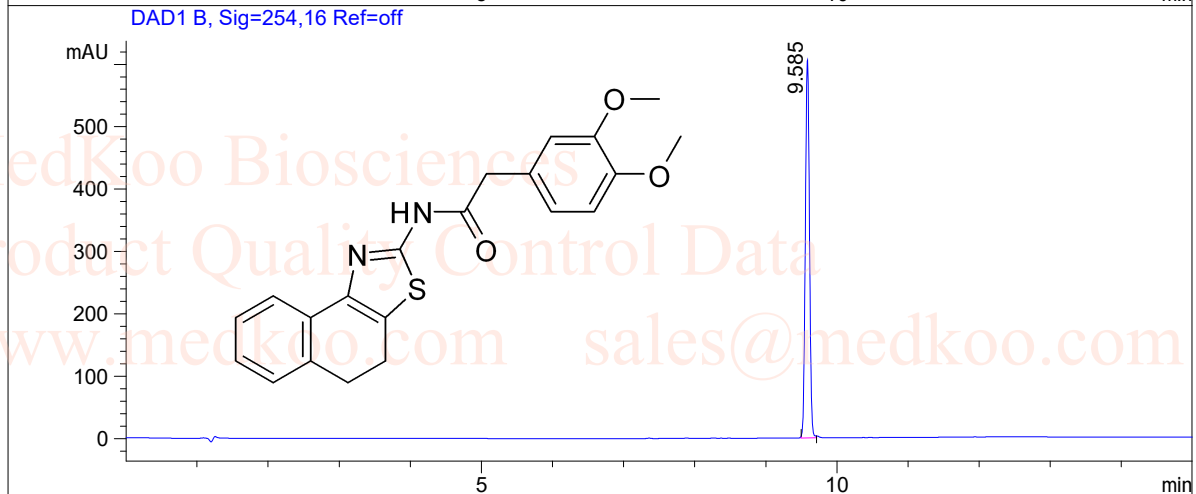
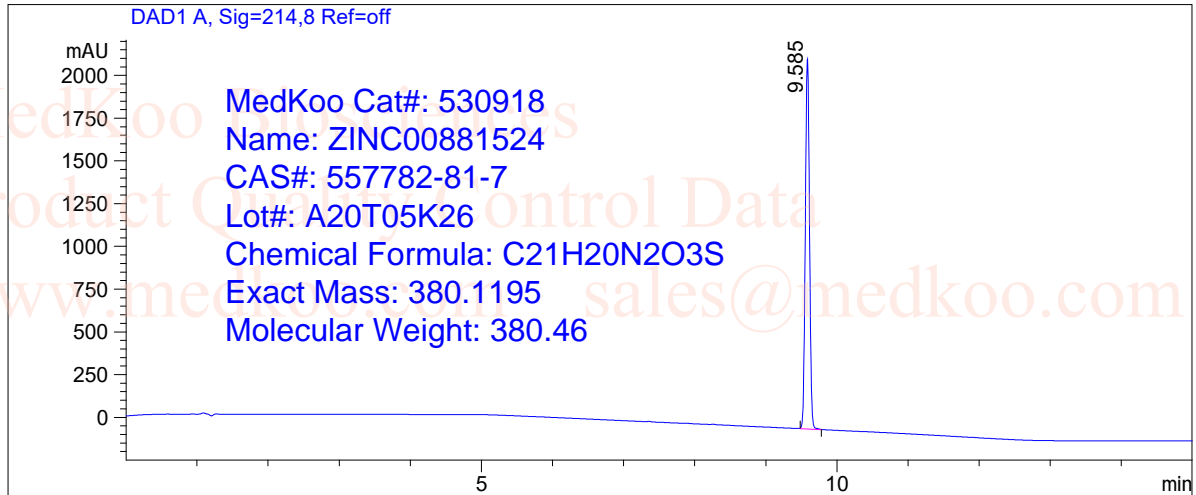
MedKoo Biosciences

www.medkoo.com

sales@medkoo.com

ZINC00881524 HPLC Analysis

Sample Name : 557782-81-7
Data File : D:\DATA-LCMS-13\557782-81-7.D Inj. Vol. : 3ul
Acq Operator : LCMS-13 Location : Vial 61
Acq. Method : D:\data-lcms-13\C2-P-20-95-15MIN.M
Method Info. : column:Eclipse XDB-C18 5um 4.6*150mm ; mobile phase:B(ACN),
A (0.02%NH4Ac);gradient(B%) : asAcq.Methodabove



Integration Results

Signal 1: DAD1 A, Sig=214,8 Ref=off

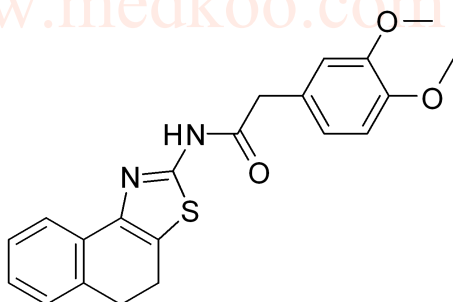
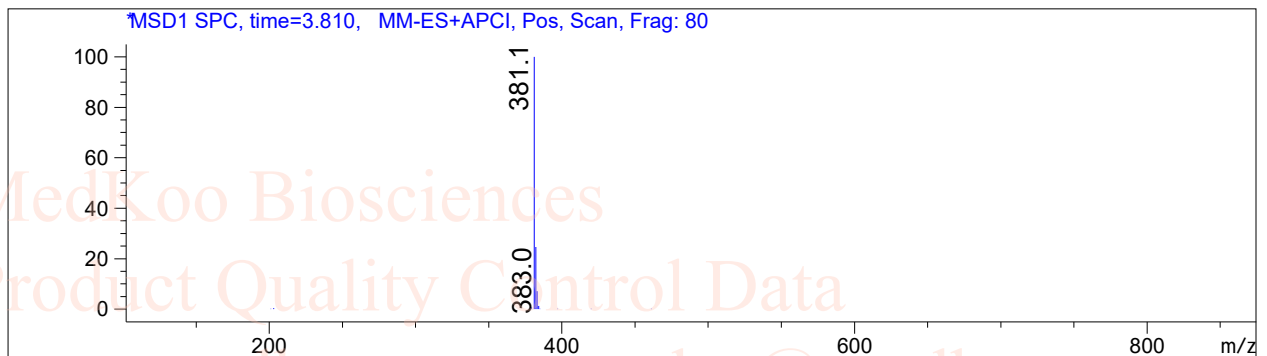
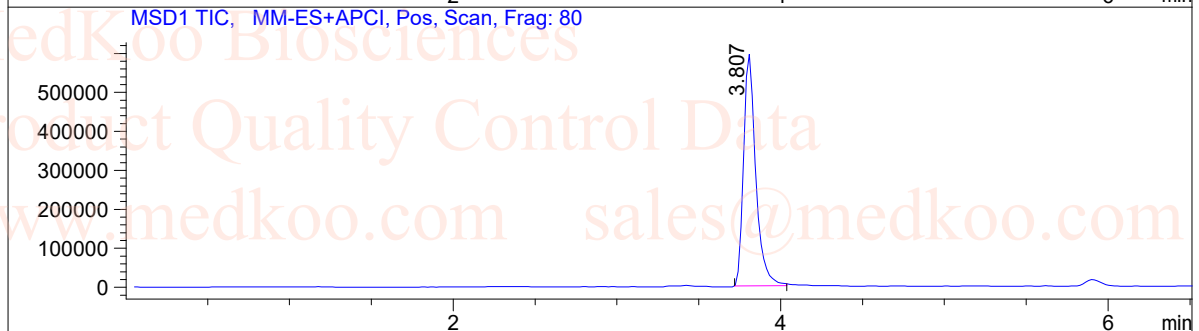
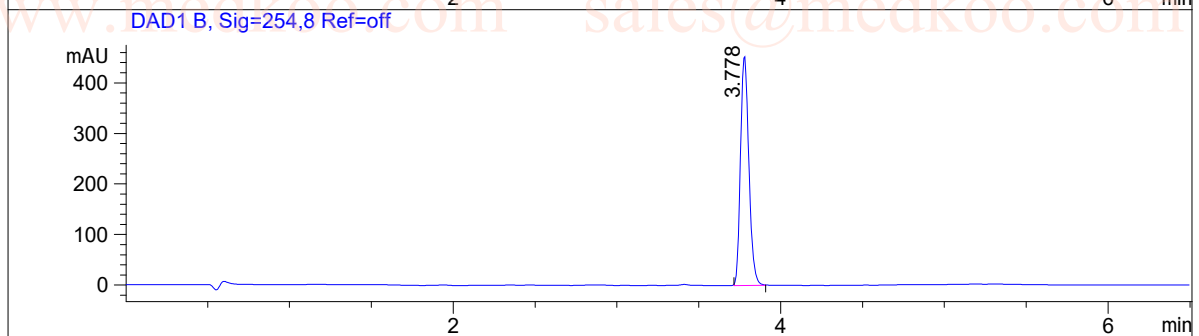
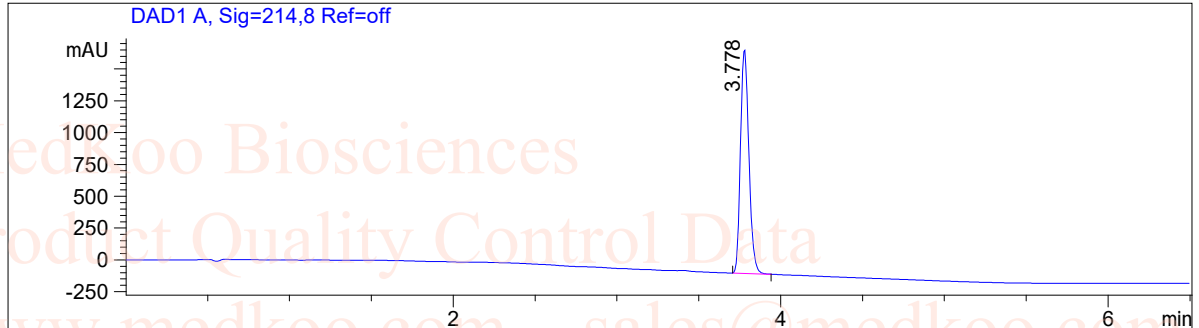
| # | R.T. | Type | Height | Height% | Width | Area | Area % |
|---|-------|------|----------|---------|-------|----------|---------|
| 1 | 9.585 | BB | 2178.006 | 100.000 | 0.063 | 8786.289 | 100.000 |

Signal 2: DAD1 B, Sig=254,16 Ref=off

| # | R.T. | Type | Height | Height% | Width | Area | Area % |
|---|-------|------|---------|---------|-------|----------|---------|
| 1 | 9.585 | BB | 609.816 | 100.000 | 0.062 | 2429.807 | 100.000 |

ZINC00881524 LC/MS Analysis

Sample Name : 557782-81-7 Inj. Vol. : 3ul
Data File : D:\DATA-LCMS-13\557782-81-7.D Location : Vial 61
Acq Operator : LCMS-13
Acq. Method : D:\data-lcms-13\P-05-95.M
Method Info. : column:Xbridge C18 5um 4.6*50mm ;mobile phase:B(ACN),
A(0.02%NH4Ac); gradient(B%):as Acq.Method above



MedKoo Cat#: 530918
Name: ZINC00881524
CAS#: 557782-81-7
Lot#: A20T05K26
Chemical Formula: C₂₁H₂₀N₂O₃S
Exact Mass: 380.1195
Molecular Weight: 380.46