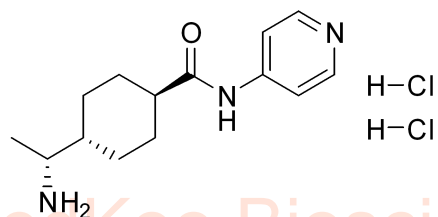
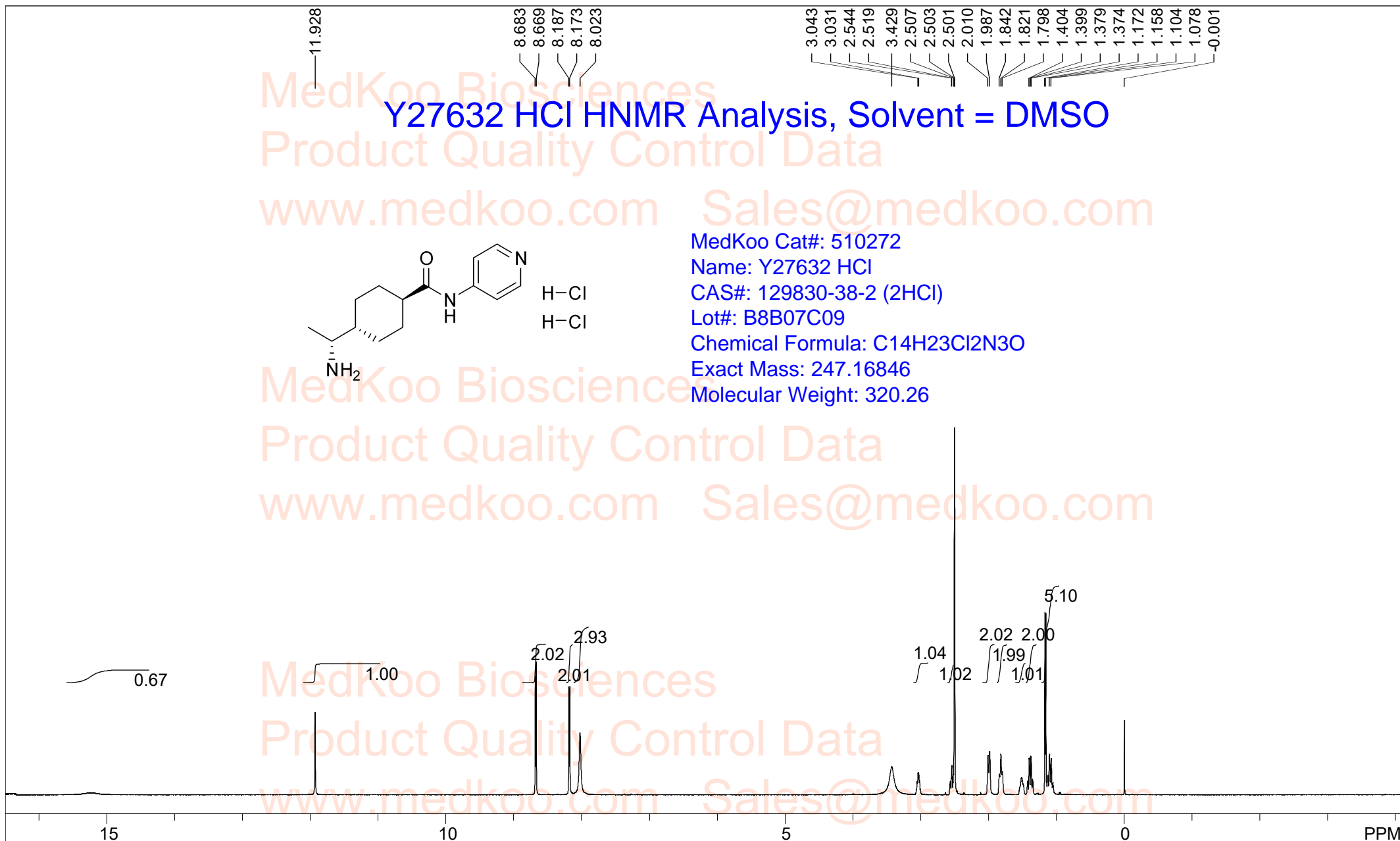


Y27632 HCl HNMR Analysis, Solvent = DMSO

MedKoo Biosciences
 Product Quality Control Data
www.medkoo.com Sales@medkoo.com



MedKoo Cat#: 510272
 Name: Y27632 HCl
 CAS#: 129830-38-2 (2HCl)
 Lot#: B8B07C09
 Chemical Formula: C₁₄H₂₃Cl₂N₃O
 Exact Mass: 247.16846
 Molecular Weight: 320.26



129830-38-2 DMSO.

F1: 500.133	F2: 1.000	SW1: 10331	PD: 1.0 sec	OF1: 3086.5	PTS1d: 32768
EX: zg30	PW: 13.7 usec	NA: 8	LB: 0.0	Nuts - \$pdata	

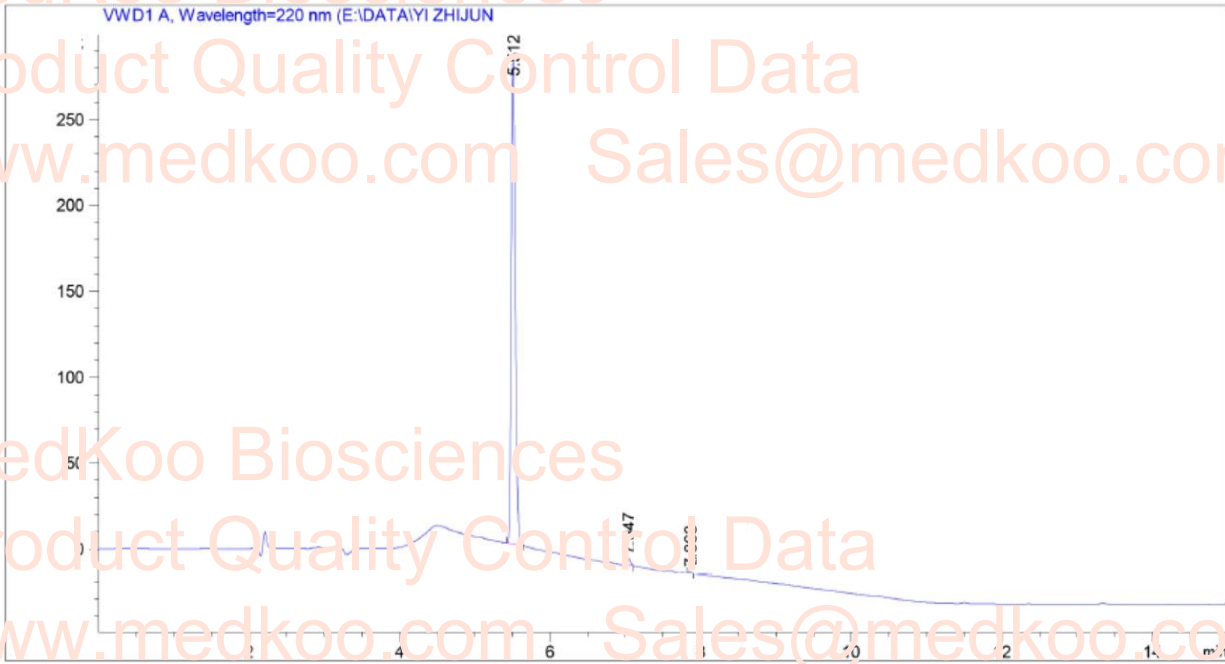
Y27632 HCl HPLC Analysis

Sample Name: Y27632 HCl

Instrument: LC1260

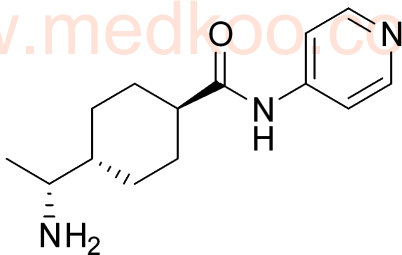
Inj. Volume (Method): 0.1 µl

Injection: 1



Signal: VWD1 A, Wavelength=220 nm

RetTime [min]	Area [mAU*s]	Height (mAU)	Area %
5.512	1071.69922	281.30228	98.3787
7.047	14.63159	4.27516	1.3431
7.863	3.03030	1.14098	0.2782



H-Cl

H-Cl

MedKoo Cat#: 510272

Name: Y27632 HCl

CAS#: 129830-38-2 (2HCl)

Lot#: B8B07C09

Chemical Formula: C₁₄H₂₃Cl₂N₃O

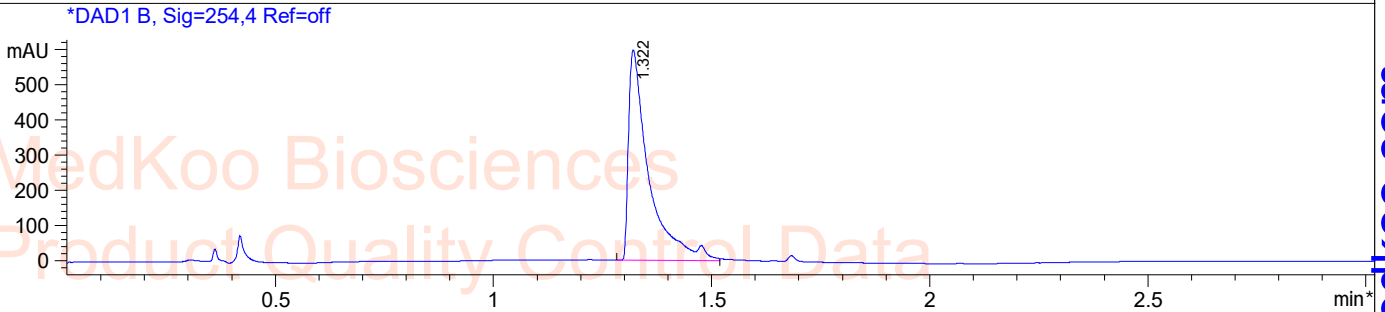
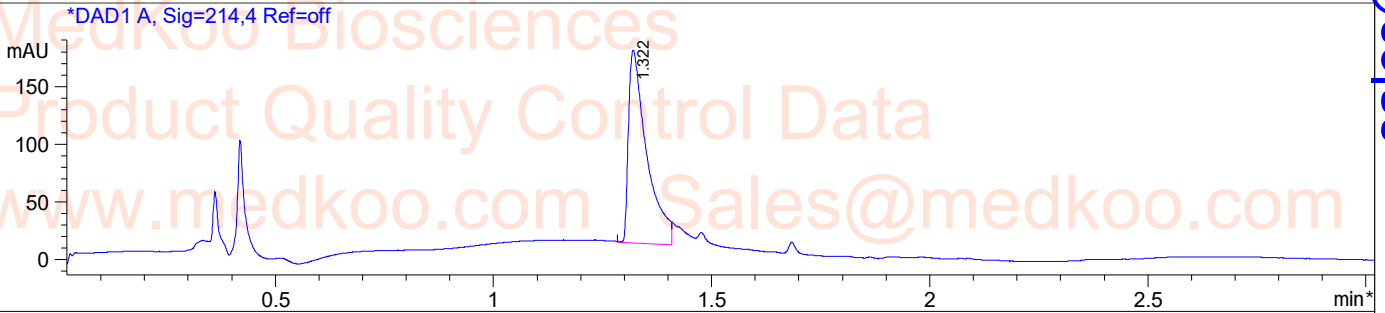
Exact Mass: 247.16846

Molecular Weight: 320.26

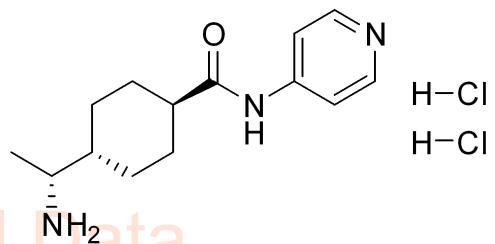
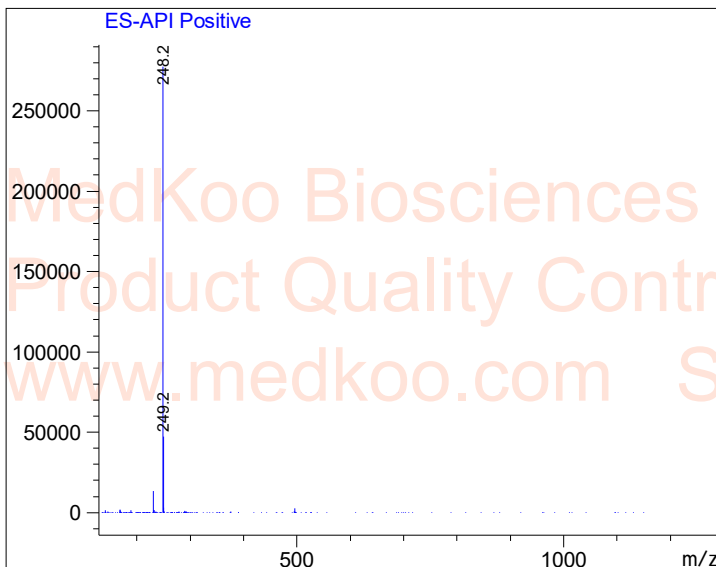
Y27632 HCl LC/MS Analysis

Sample Name : 129830-38-2

Method Info : Mobile Phase: A:Water(10mM NH₄HCO₃) B:ACN
Gradient: 5% increase to 95%B within 1.4min,
95%B for 1.6min,back to 5%B within 0.01min
Flow Rate: 1.8.0ml/min
Column: XBridge C18,4.6*50mm,3.5um
Column Temperature: 40 C
Detection:UV(214,4nm) and MS(ESI,Neg mode,133 to 1000 amu)



Ret. Time: 1.35 <<<< POSITIVE SPECTRA >>>>



MedKoo Cat#: 510272
Name: Y27632 HCl
CAS#: 129830-38-2 (2HCl)
Lot#: B8B07C09
Chemical Formula: C₁₄H₂₃Cl₂N₃O
Exact Mass: 247.16846
Molecular Weight: 320.26