

WIN54954 HNMR Analysis, Solvent: CDCl₃

www.medkoo.com Sales@medkoo.com

MedKoo Cat#: 414253

Name: WIN54954

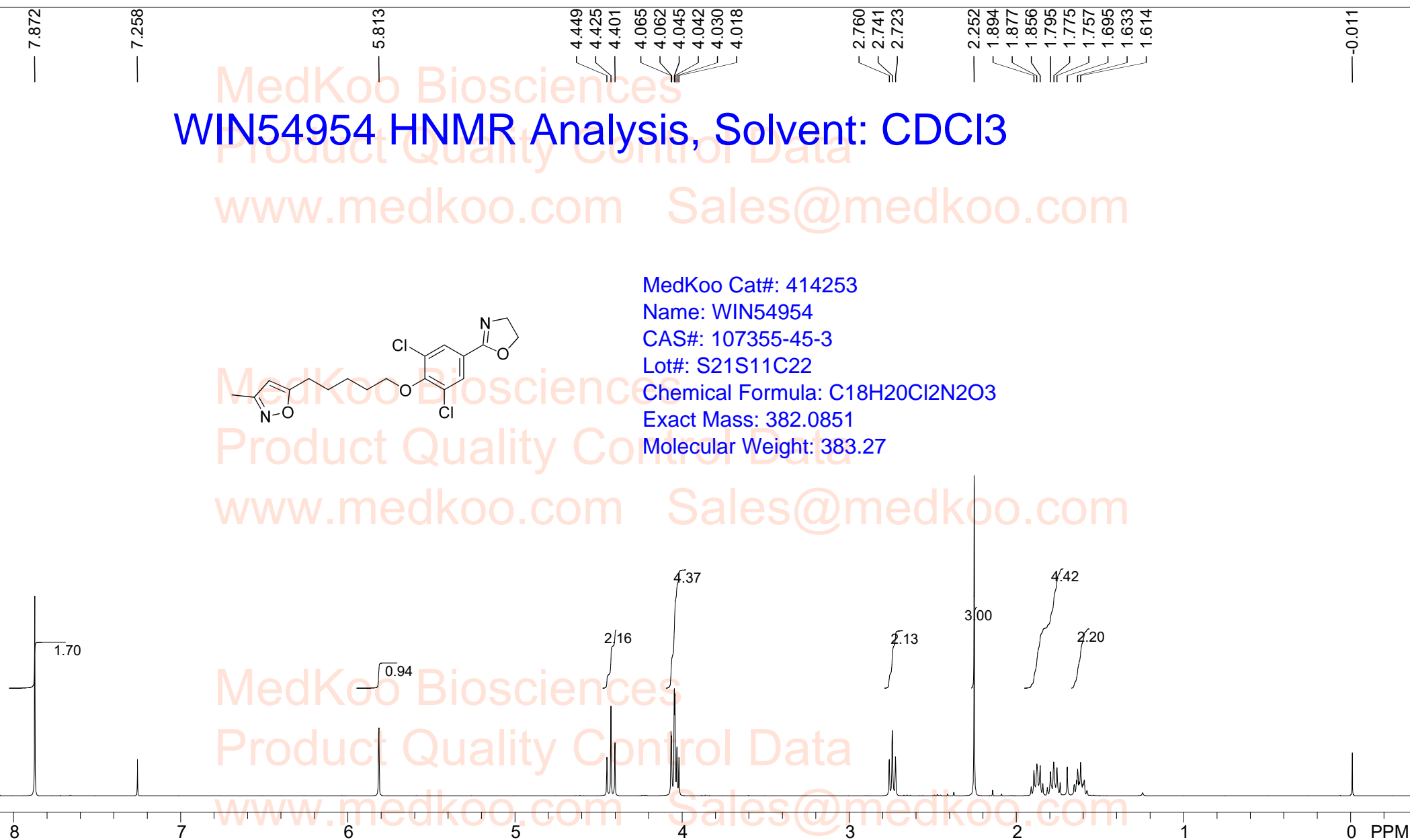
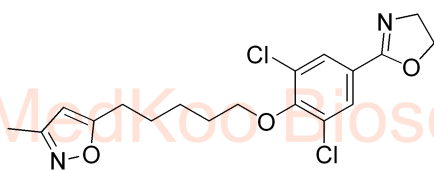
CAS#: 107355-45-3

Lot#: S21S11C22

Chemical Formula: C₁₈H₂₀Cl₂N₂O₃

Exact Mass: 382.0851

Molecular Weight: 383.27



WIN-54954, CDCl₃, 400MHz

F1: 399.818 F2: 100.543

SW1: 6410

PW: 9.2 usec

PD: 5.0 sec

OF1: 2398.9

NA: 16

LB: 0.0

PTS1d: 16384

Nuts - \$PROTON_01.fid

MedKoo Biosciences

www.medkoo.com

sales@medkoo.com

WIN54954 HPLC Analysis

Sample Name: Sample
Type: Vial: 1
Injection: 1
Inj. Volume: 1.2 ul
Run Time: 15 Minutes

WIN54954
Unknown

1: A, 3

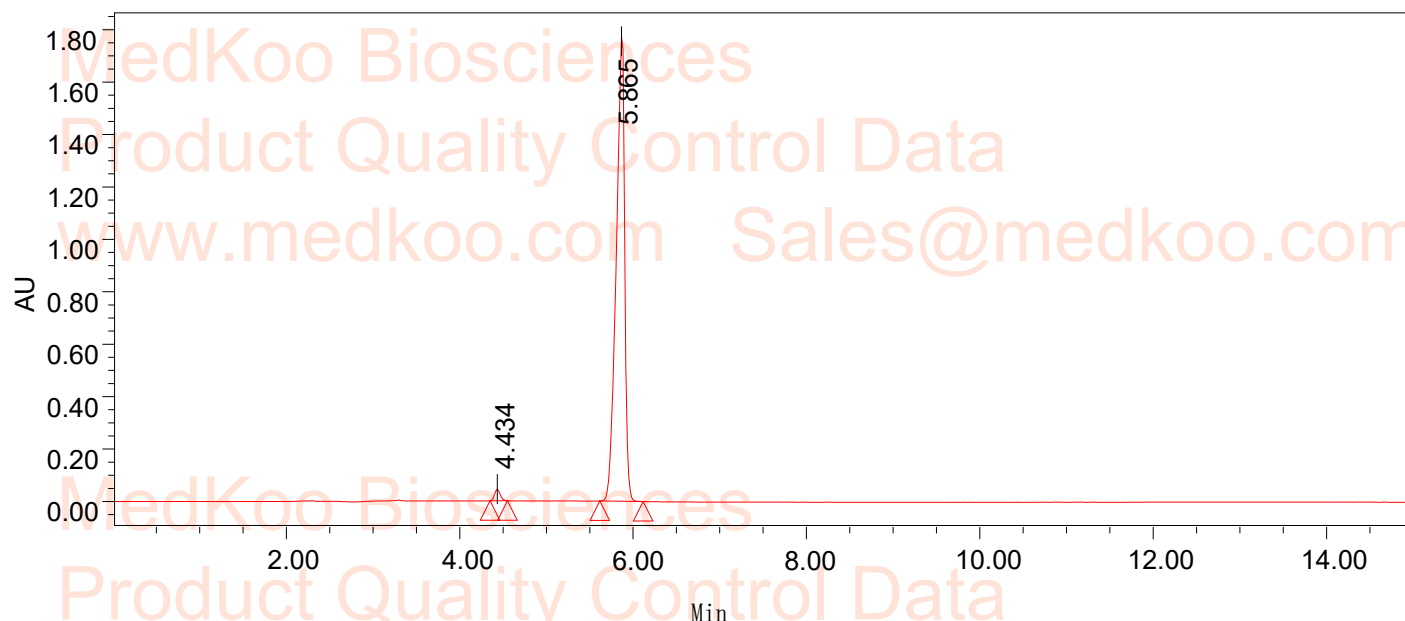
1

1.2 ul

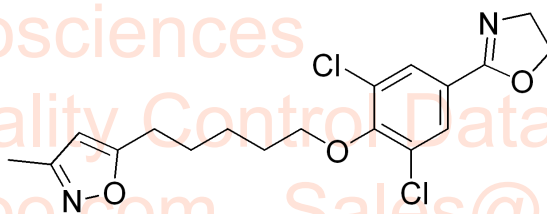
15 Minutes

User:
Acq. Method:
Method
Channel:
Channel:

System
70_30
WIN54954
W2996 254.0nm-1.2
W2996 PDA 254.0 nm (1.2)



#	Ret. Time	Area	Height	% Area
1	4.434	200314	43535	1.64
2	5.865	12026673	1785209	98.36



MedKoo Cat#: 414253

Name: WIN54954

CAS#: 107355-45-3

Lot#: S21S11C22

Chemical Formula: C₁₈H₂₀Cl₂N₂O₃

Exact Mass: 382.0851

Molecular Weight: 383.27

sales@medkoo.com

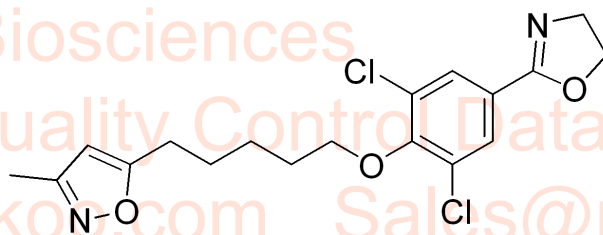
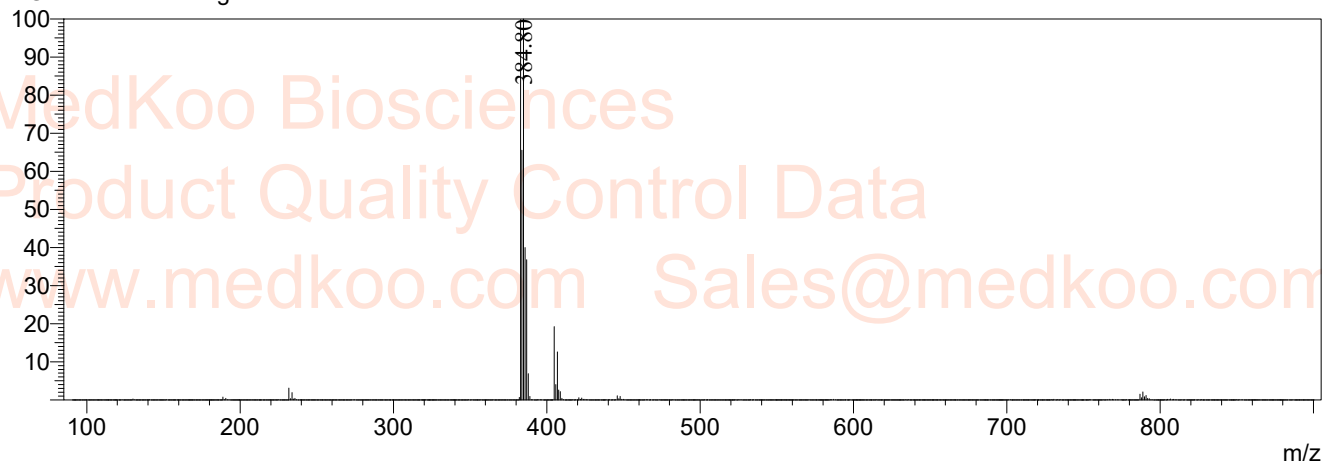
www.medkoo.com

MedKoo Biosciences

WIN54954 MS Analysis

Mass Spectrum

Line#:2 R.Time:2.113(Scan#:130)
Spectrum Mode:Single 2.113(130) BasePeak:384.80(BaseInt:8728538)
BG Mode:None Segment 1 - Event 1



MedKoo Cat#: 414253

Name: WIN54954

CAS#: 107355-45-3

Lot#: S21S11C22

Chemical Formula: C₁₈H₂₀Cl₂N₂O₃

Exact Mass: 382.0851

Molecular Weight: 383.27