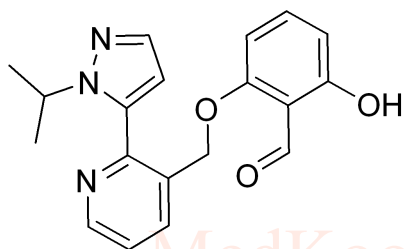


Voxelotor HNMR Analysis, Solvent: CDCl3

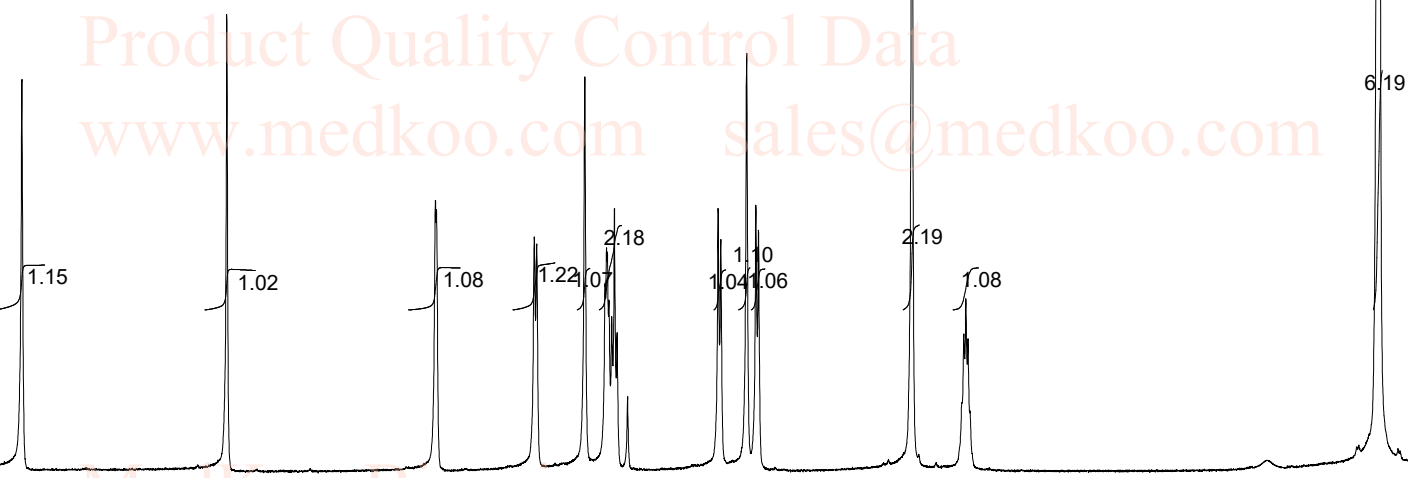
www.medkoo.com sales@medkoo.com



MedKoo Cat#: 329516
 Name: Voxelotor
 CAS#: 1446321-46-5
 Lot#: S9S04C30
 Chemical Formula: C19H19N3O3
 Exact Mass: 337.1426
 Molecular Weight: 337.379

MedKoo Biosciences
 Product Quality Control Data
 www.medkoo.com sales@medkoo.com

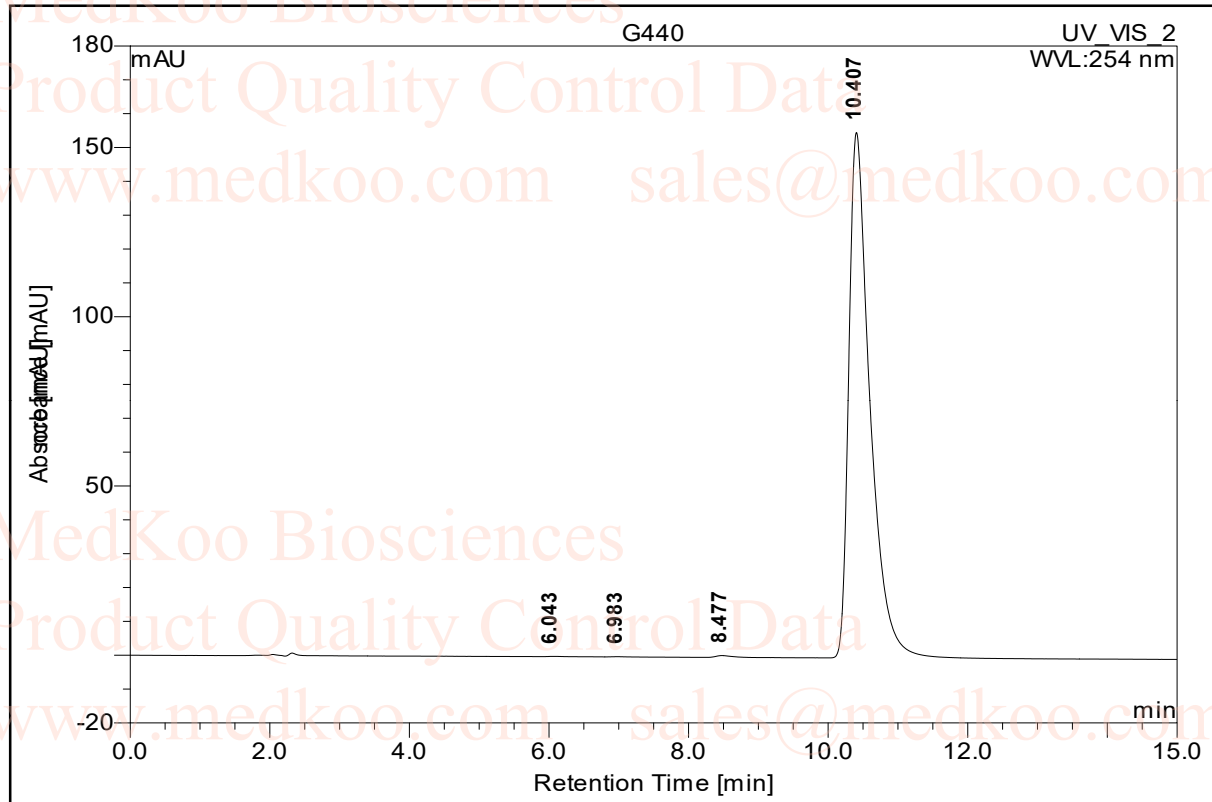
11.947
 10.365
 8.753
 8.746
 7.989
 7.971
 7.600
 7.444
 7.433
 7.426
 7.414
 7.392
 7.371
 7.350
 7.270
 6.571
 6.549
 6.350
 6.280
 6.259
 5.075
 4.674
 4.657
 4.642
 4.626
 1.568
 1.545
 1.482
 1.466
 -0.006



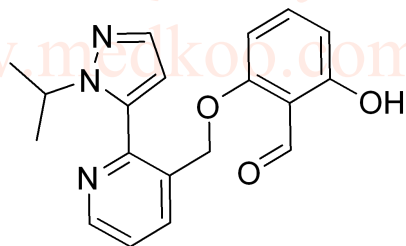
Voxelotor(GBT440, GTX011), CDCl3,400MHz							
F1: 399.789	F2: 100.536	SW1: 6831	OF1: 2685.1	PTS1d: 16384			
EX: s2pul	PW: 5.6 usec	PD: 1.0 sec	NA: 8	LB: 0.0	Nuts - \$-voxelotor-CDCl3.fid		

Voxelotor HPLC Analysis Report

Sample Name:	G440	Injection Volume:	5.0
Vial Number:	RE1	Channel:	UV_VIS_2
Sample Type:	unknown	Wavelength:	254
Control Program:		Bandwidth:	4
Quantif. Method:	default	Dilution Factor:	1.0000
		Sample Weight:	1.0000
		Sample Amount:	1.0000



No.	Ret.Time min	Peak Name	Height mAU	Area mAU*min	Rel.Area %	Amount n.a.	Type
1	6.04	n.a.	0.080	0.015	0.03	n.a.	BMB*
2	6.98	n.a.	0.068	0.010	0.02	n.a.	BMB
3	8.48	n.a.	0.552	0.148	0.27	n.a.	BMB
4	10.41	n.a.	155.261	54.492	99.68	n.a.	BMB
Total:			155.961	54.665	100.00	0.000	



MedKoo Cat#: 329516

Name: Voxelotor

CAS#: 1446321-46-5

Lot#: S9S04C30

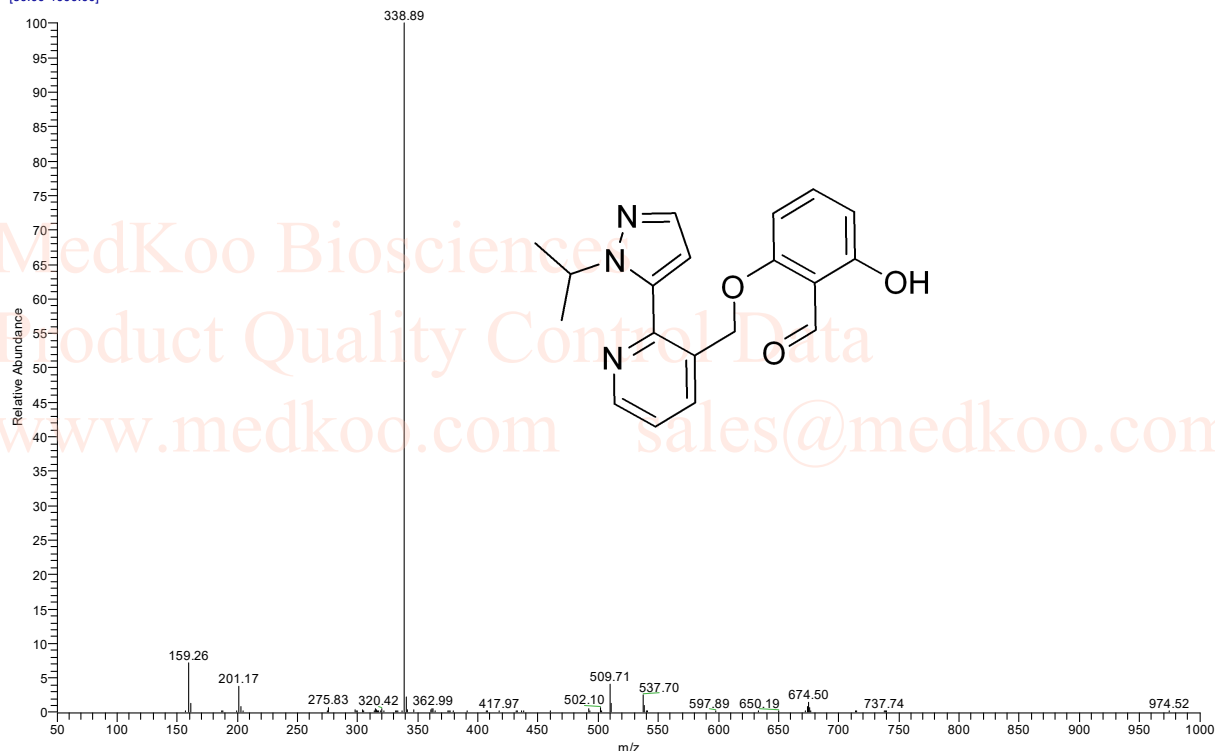
Chemical Formula: C₁₉H₁₉N₃O₃

Exact Mass: 337.1426

Molecular Weight: 337.379

Voxelotor HPLC Analysis Report

#349-350 RT: 2.38-2.38 AV: 2 SB: 51 0.85-1.19 NL: 9.25E5 T: ITMS + c ESI Full ms [50.00-1000.00]



#97 RT: 0.65 AV: 1 SB: 31 0.59-0.79 NL: 1.13E5 T: ITMS + c ESI Full ms [50.00-1000.00]

