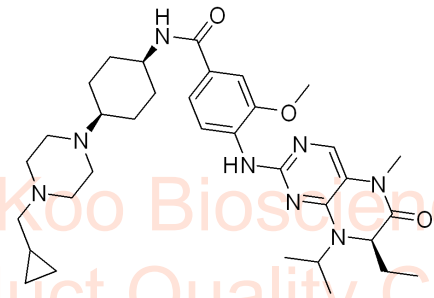


8.545  
8.524  
7.667  
7.604  
7.421  
7.417  
7.260  
7.234  
7.230  
7.213  
7.209  
5.887  
5.867  
4.731  
4.714  
4.697  
4.298  
4.290  
4.278  
4.270  
3.962  
3.930  
3.921  
3.911  
3.901  
3.896  
3.319  
2.642  
2.289  
2.262  
2.246  
2.190  
2.163  
2.039  
1.993  
1.964  
1.937  
1.929  
1.919  
1.910  
1.902  
1.893  
1.883  
1.875  
1.768  
1.737  
1.719  
1.701  
1.464  
1.439  
1.423  
1.361  
1.343  
1.302  
1.271  
1.246  
0.900  
0.877  
0.858  
0.839  
0.528  
0.514  
0.494  
0.483  
0.116  
0.103  
0.092  
0.080  
-0.008

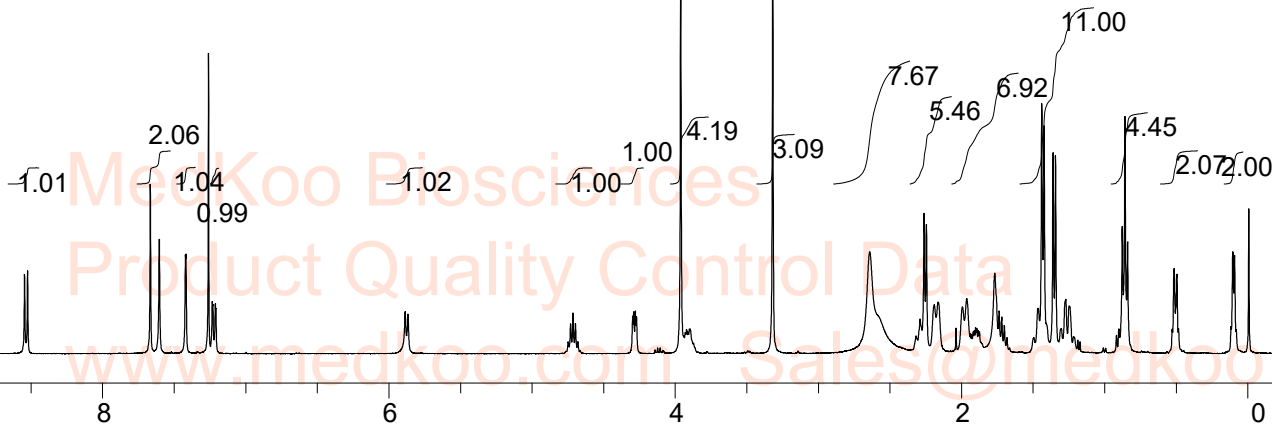
# Volasertib HNMR Analysis, Solvent:CDCl3

MedKoo Biosciences  
Product Quality Control Data  
www.medkoo.com Sales@medkoo.com



MedKoo Cat#: 200494  
Name: Volasertib  
CAS#: 755038-65-4  
Lot#: A9T01K30  
Chemical Formula: C34H50N8O3  
Exact Mass: 618.40059  
Molecular Weight: 618.81

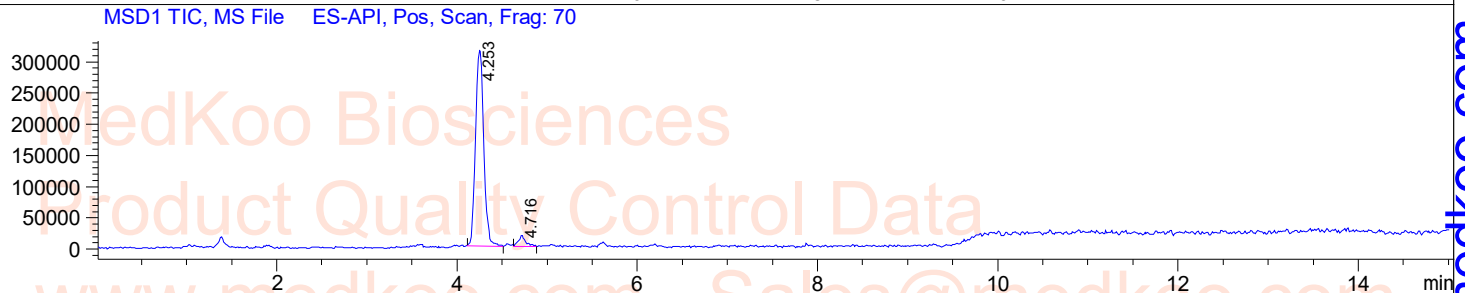
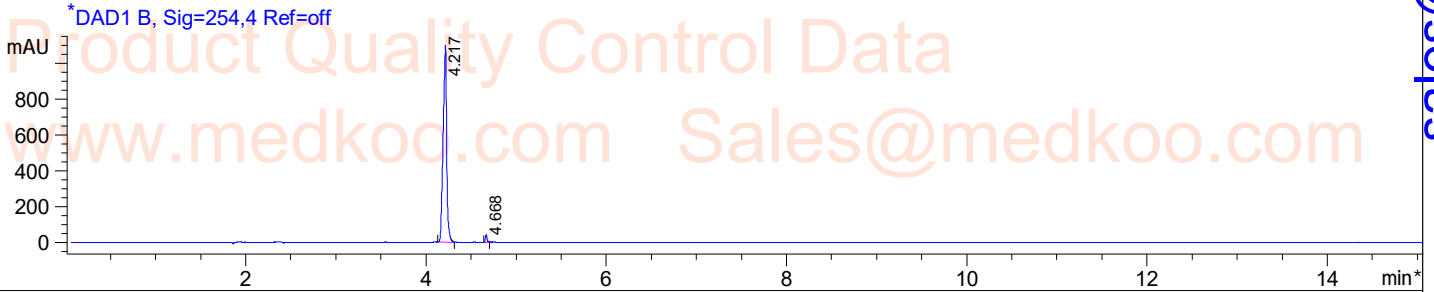
MedKoo Biosciences  
Product Quality Control Data  
www.medkoo.com Sales@medkoo.com



CDCl3,	F1: 400.132	F2: 1.000	SW1: 8224	OF1: 2461.6	PTS1d: 32768
EX: zg30	PW: 13.0 usec	PD: 1.0 sec	NA: 8	LB: 0.0	Nuts - \$pdata

# Volasertib LC/MS Analysis

Sample Name : 755038-65-4  
Analysis Method : D:\METHODS\2-POS-15MIN.M  
Sample Info : Easy-Access Method: '2-POS-15MIN'  
Method Info : Mobile Phase : A:water(0.01%TFA) B:ACN(0.01%TFA)  
GGradient  
Time 0 7.5 15  
B % 5 95 95  
Flow Rate :1ml/min  
Column :SUNFIRE, 150\*4.6mm,3.5um

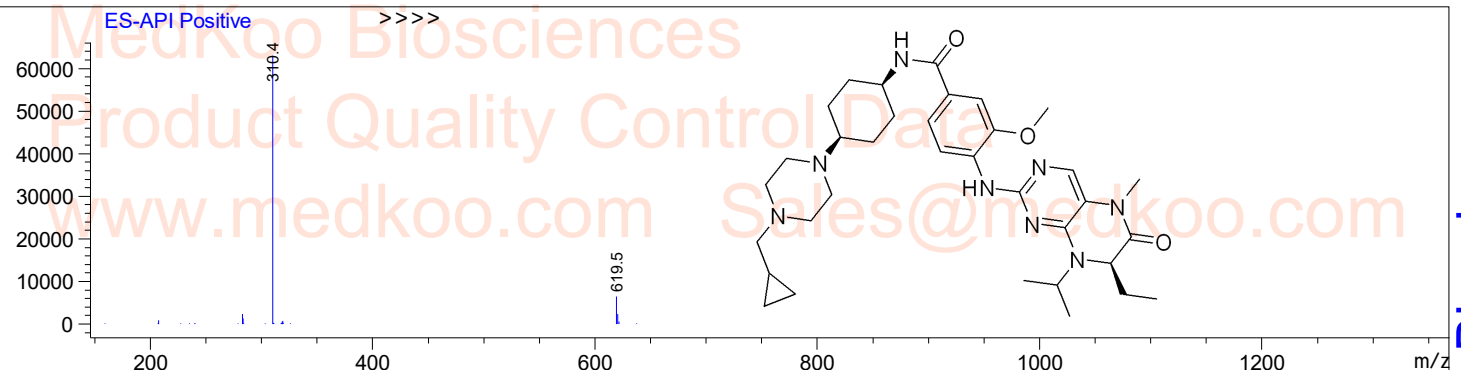


Integration Results for DAD1 B, Sig=254,4 Ref=off

RetTim	Width	Area	Height	Area%
4.22	0.04	3006.83	1099.95	98.20
4.67	0.02	55.21	41.38	1.80

Ret. Time: 4.25

<<<< POSITIVE SPECTRA



MedKoo Cat#: 200494

Name: Volasertib

CAS#: 755038-65-4

Lot#: A9T01K30

Chemical Formula: C<sub>34</sub>H<sub>50</sub>N<sub>8</sub>O<sub>3</sub>

Exact Mass: 618.40059

Molecular Weight: 618.81

sales@medkoo.com

www.medkoo.com

MedKoo Biosciences