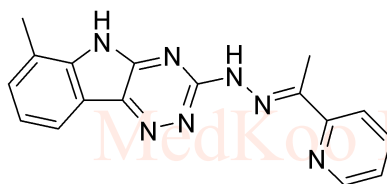
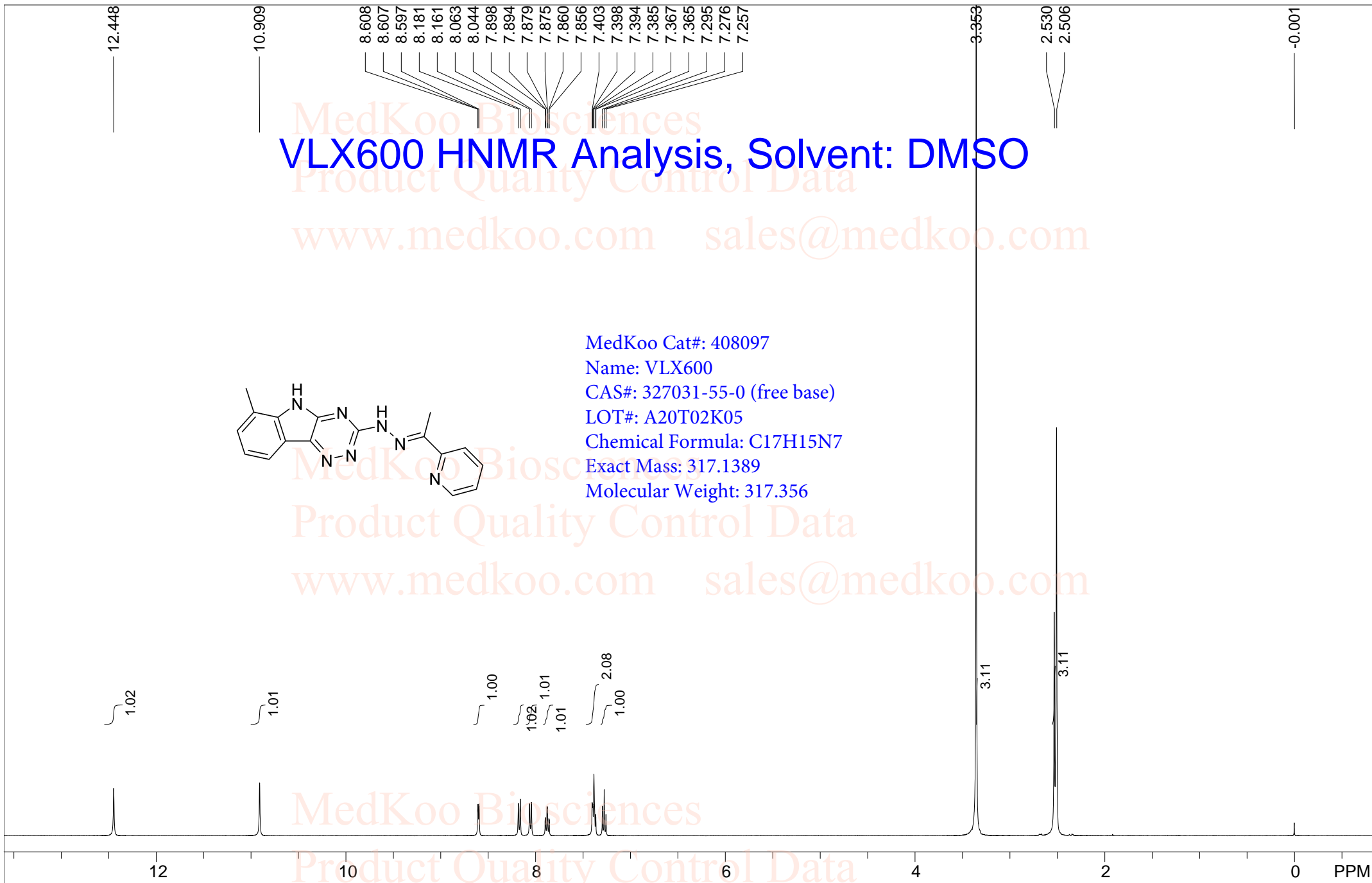


# VLX600 HNMR Analysis, Solvent: DMSO



MedKoo Cat#: 408097

Name: VLX600

CAS#: 327031-55-0 (free base)

LOT#: A20T02K05

Chemical Formula: C17H15N7

Exact Mass: 317.1389

Molecular Weight: 317.356

DMSO							
F1: 400.130	F2: 1.000	SW1: 8224	OF1: 2471.6	PTS1d: 32768			
EX: zg30	PW: 12.00 sec	PD: 1.0 sec	NU: 8	LB: 0.3			

# VLX600 LC/MS Analysis

Sample Name : 1622945-04-3

Method Info : Mobile Phase: A: water(0.01%TFA) B: ACN(0.01%TFA)

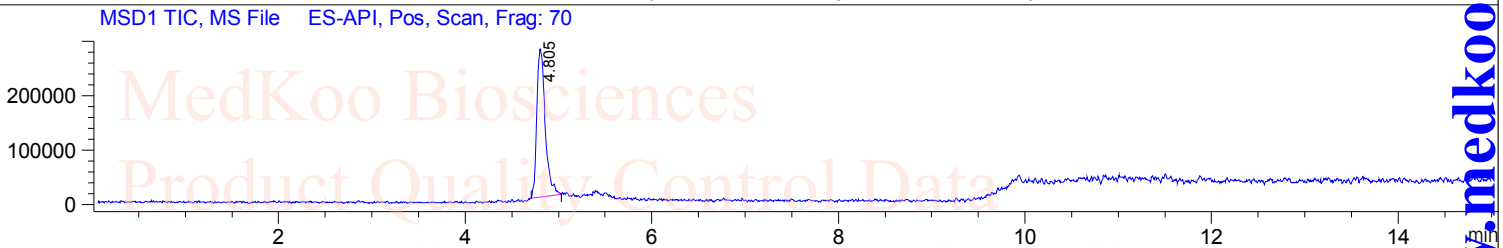
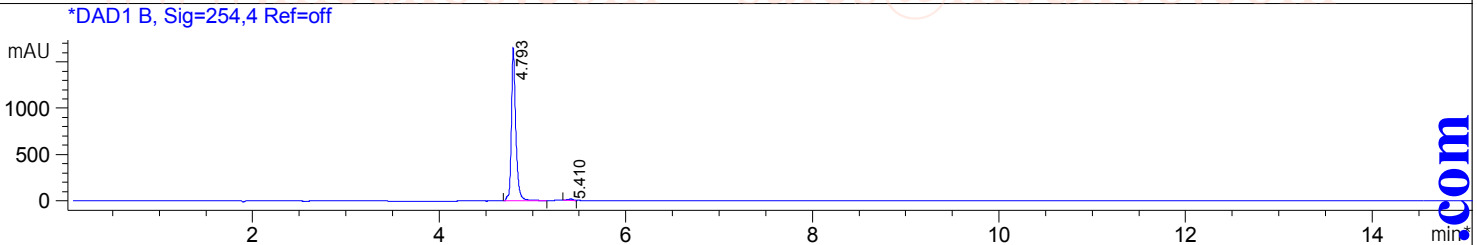
Gradient: 5% increase to 95%B within 7.5 min, 95%B for 7.5 min.

Flow Rate: 1.0ml/min

Column: Sunfire C18, 4.6\*150mm, 3.5um

Column Temperature: 45 C

Detection: UV(214, 4nm) and MS(ESI, Pos mode, 110 to 1500 amu)



Integration Results for DAD1 A, Sig=214,4 Ref=off

RetTim	Width	Area	Height	Area%
4.79	0.05	5810.26	1744.34	98.52
5.41	0.05	88.26	22.37	1.48

MedKoo Cat#: 408097

Name: VLX600

CAS#: 327031-55-0 (free base)

LOT#: A20T02K05

Chemical Formula: C17H15N7

Exact Mass: 317.1389

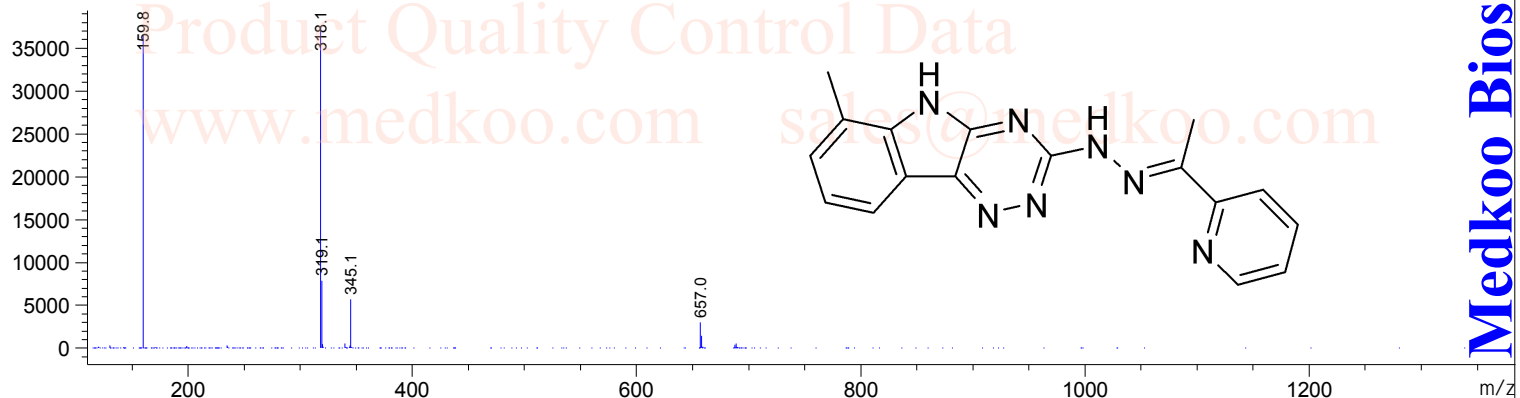
Molecular Weight: 317.356

Integration Results for DAD1 B, Sig=254,4 Ref=off

RetTim	Width	Area	Height	Area%
4.79	0.05	5442.73	1657.11	99.07
5.41	0.05	51.20	15.12	0.93

Ret. Time: 4.81 <<<< POSITIVE SPECTRA >>>>

ES-API Positive



sales@medkoo.com  
www.medkoo.com  
MedKoo Biosciences