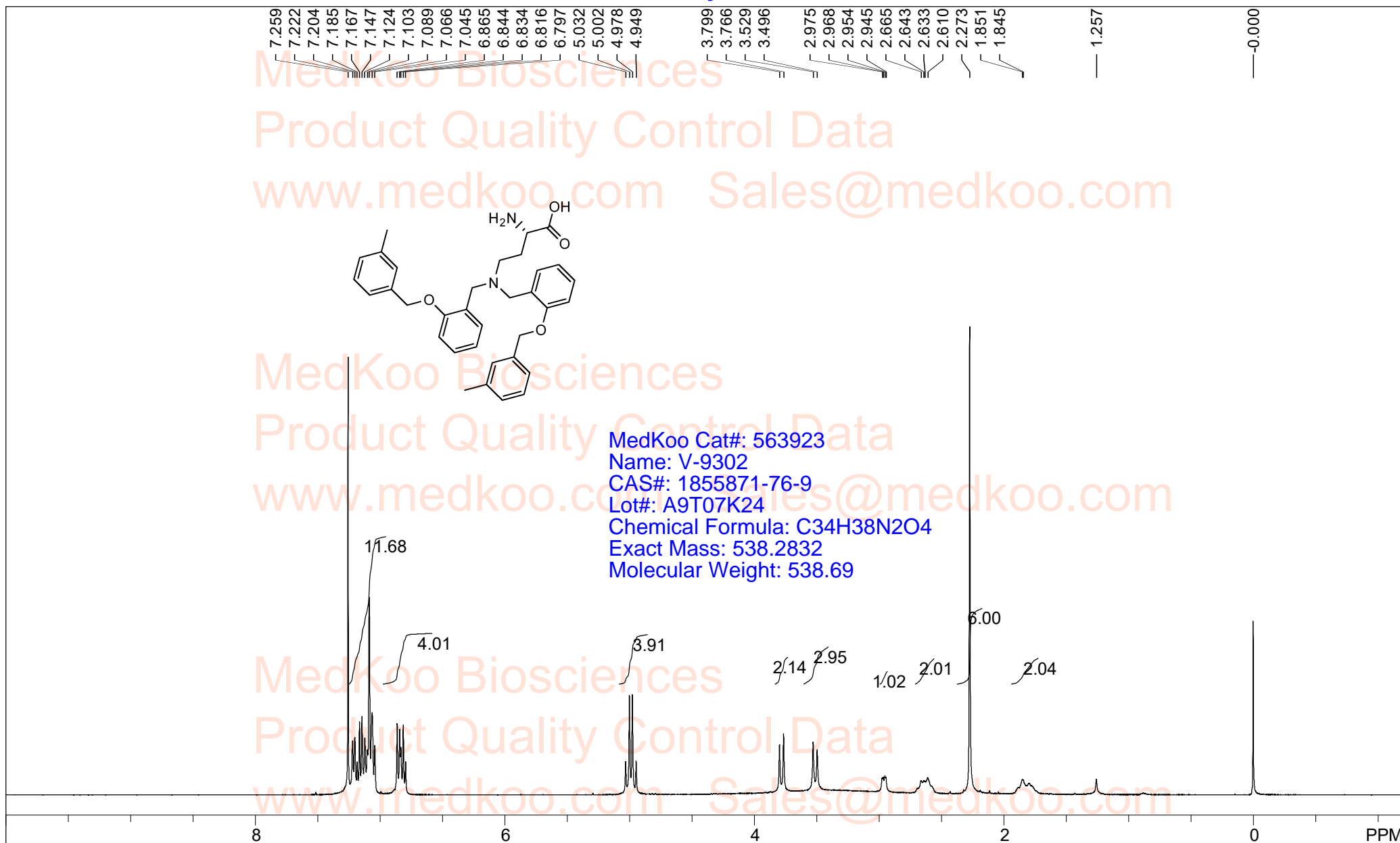


# V-9302 HNMR Analysis, Solvent:CDCl3

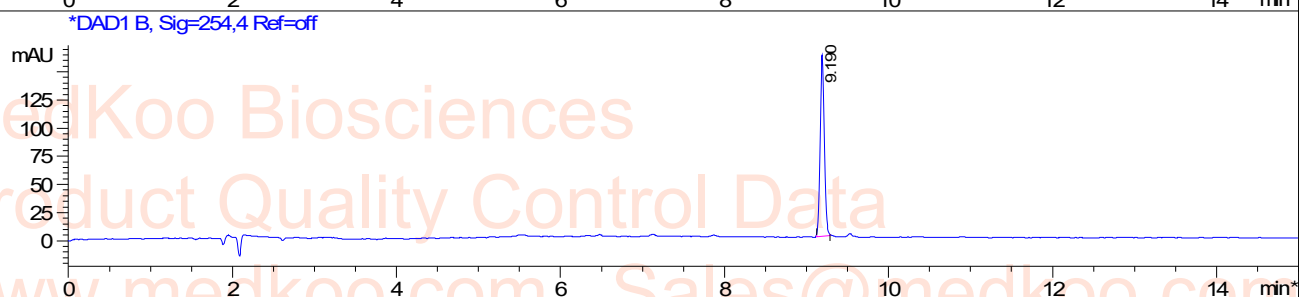
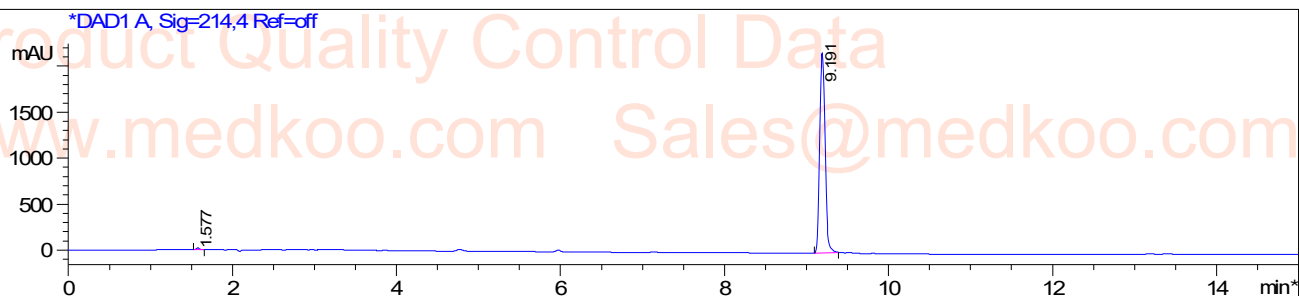


spect, CDCl3, 1855871-76-9

F1: 400.132	F2: 1.000	SW1: 8224	PD: 1.0 sec	OF1: 2460.6	PTS1d: 65536
EX: zg30		PW: 15.0 usec		NA: 8	LB: 0.0

# V-9302 HPLC analysis

Sample Name : 1855871-76-9  
Method Info : Mobile Phase: A: water(10mM Ammonium hydrogen carbonate) B: ACN  
Gradient: 5%-95% B in 8 min,95%B for 7min.  
Flow Rate: 1.0ml/min  
Column: XBridge C18,4.6\*150mm,3.5um  
Oven Temperature: 40 C  
Mass Range: 110-900 UV: 214nm;254nm



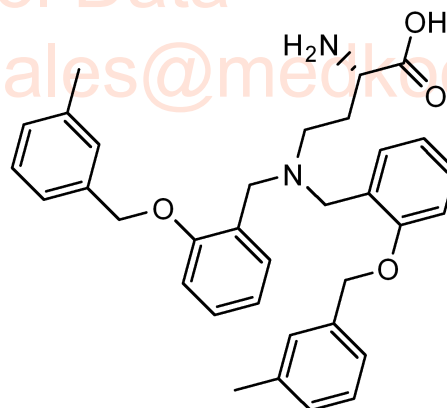
Integration Results for DAD1 A, Sig=214,4 Ref=off

RetTim	Width	Area	Height	Area%
1.58	0.05	54.42	19.17	0.53
9.19	0.08	10124.93	2176.02	99.47

Integration Results for DAD1 B, Sig=254,4 Ref=off

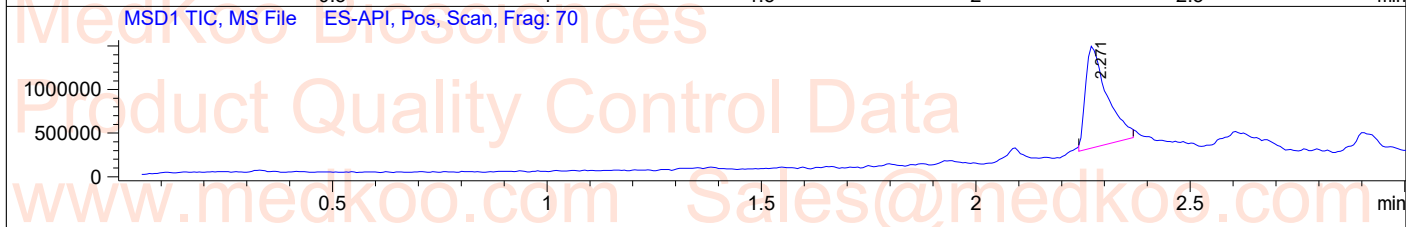
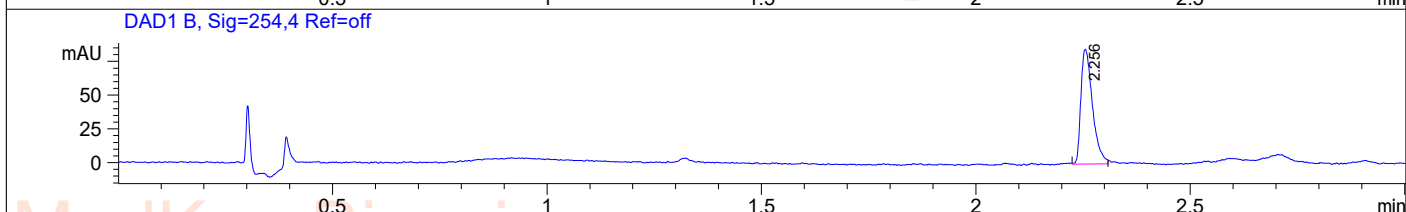
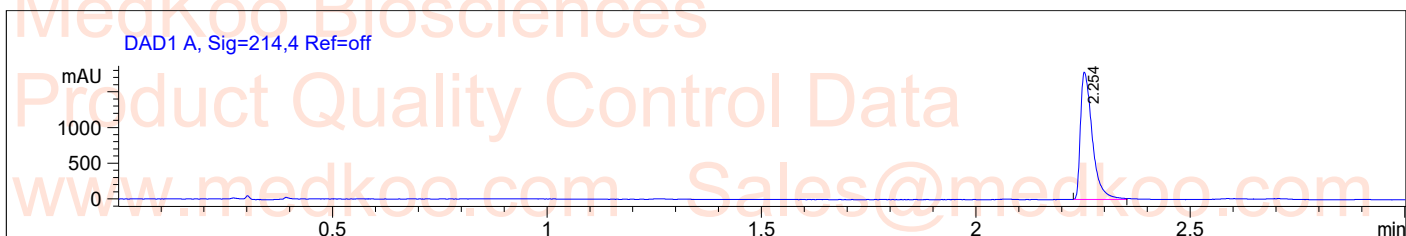
RetTim	Width	Area	Height	Area%
9.19	0.06	578.66	161.96	100.00

MedKoo Cat#: 563923  
Name: V-9302  
CAS#: 1855871-76-9  
Lot#: A9T07K24  
Chemical Formula: C<sub>34</sub>H<sub>38</sub>N<sub>2</sub>O<sub>4</sub>  
Exact Mass: 538.2832  
Molecular Weight: 538.69

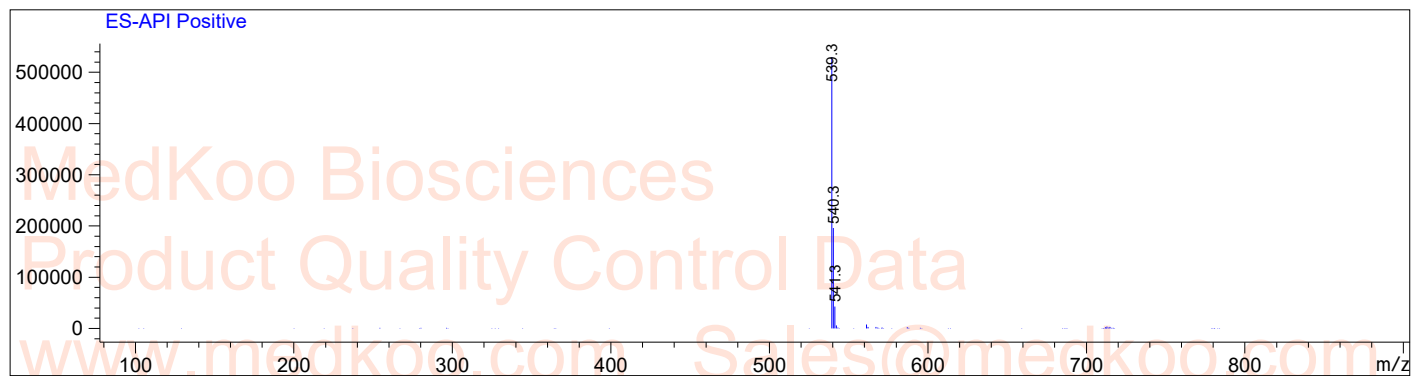


# V-9302 LC/MS analysis

Sample Name : 1855871-76-9  
Method Info : Mobile Phase: A: water(10mm NH<sub>4</sub>HCO<sub>3</sub>) B: ACN  
Gradient: 5%-95% B in 1.5min  
Flow Rate: 2.0ml/min  
Column: X-Bridge C18,4.6\*50mm,5um  
Oven Temperature: 40 C  
MASS Range:110-800



Ret. Time: 2.27 <<<< POSITIVE SPECTRA >>>>



MedKoo Cat#: 563923  
Name: V-9302  
CAS#: 1855871-76-9  
Lot#: A9T07K24  
Chemical Formula: C<sub>34</sub>H<sub>38</sub>N<sub>2</sub>O<sub>4</sub>  
Exact Mass: 538.2832  
Molecular Weight: 538.69

