

Telatinib HNMR Analysis, Solvent = DMSO-d6



8.715
8.645
8.643
8.633
8.631
8.295
8.290
8.143
8.141
8.139
8.137
8.940
7.932
7.927
7.915
7.910
7.902
7.688
7.686
7.684
7.676
7.674
7.672
7.426
7.421
7.375
7.367
7.362
7.350
7.345
5.761
3.264
2.845
2.833
2.516
2.512
2.507
2.503
2.498

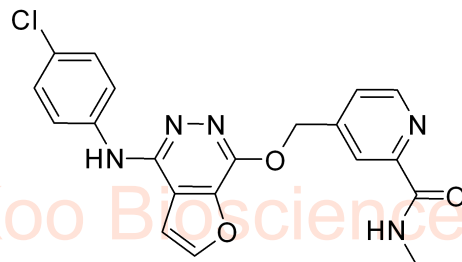
Current Data Parameters
NAME Telatinib
EXPNO 10
PROCNO 1

F2 - Acquisition Parameters

INSTRUM spect
PROBHD 5 mm PABBO BB-
PULPROG zg30
TD 65536
SOLVENT DMSO
NS 16
DS 2
SWH 8012.820 Hz
FIDRES 0.122266 Hz
AQ 4.0894465 sec
RG 181
DW 62.400 usec
DE 6.50 usec
TE 313.1 K
D1 1.00000000 sec
TD0 1

==== CHANNEL f1 =====
SFO1 400.1324710 MHz
NUC1 1H
P1 15.00 usec
PLW1 33.00000000 W

F2 - Processing parameters
SI 65536
SF 400.1300000 MHz
WDW no
SSB 0
LB 0 Hz
GB 0
PC 1.00



MedKoo Cat#: 206424

Name: Telatinib

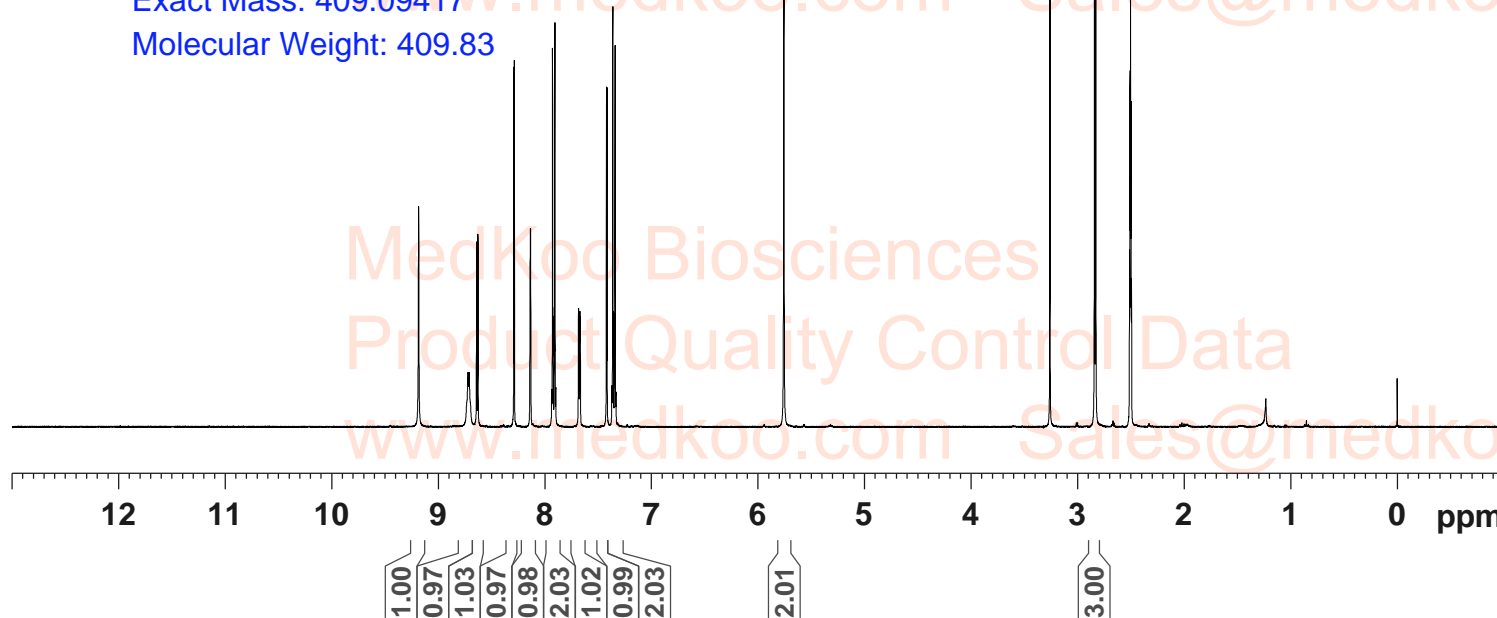
CAS#: 332012-40-5

Lot#: TZC51225

Chemical Formula: C₂₀H₁₆ClN₅O₃

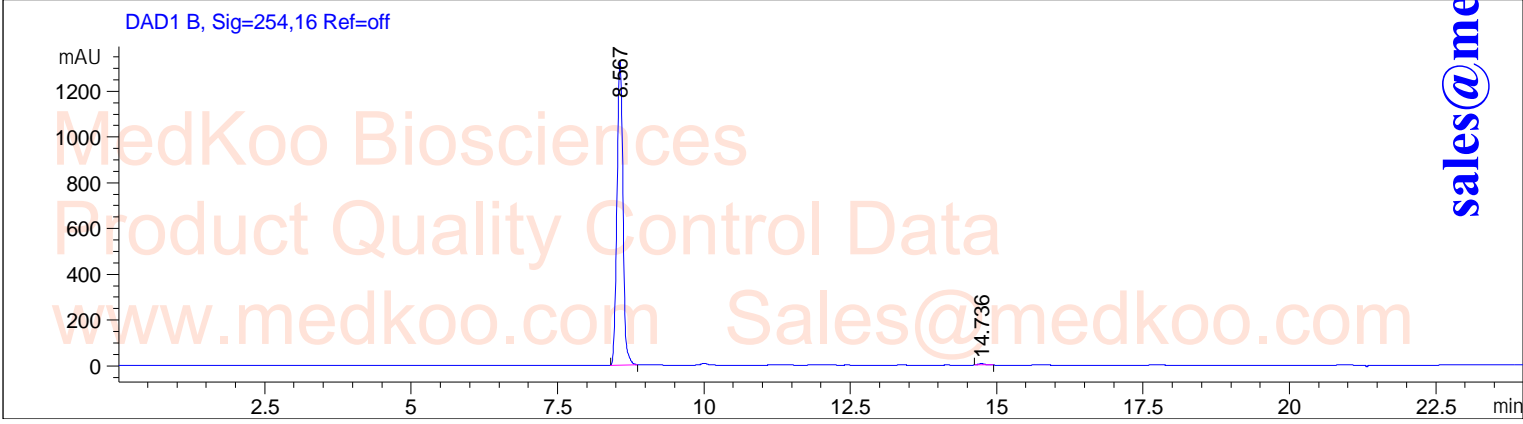
Exact Mass: 409.09417

Molecular Weight: 409.83



Telatinib HPLC Analysis

=====
User : System Seq. Line : 3
Instrument : Instrument 1 Location : Vial 45
Acq. Method : C:\CHEM32\1\DATA\TEST-KR.M Injection : 1
Analysis Method : C:\CHEM32\1\METHODS\TEST-KR.M Inj. Volume : 1.0uL
=====



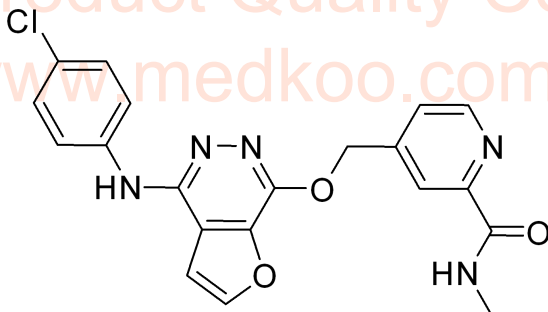
=====
Area Percent Report
=====

Sorted By : Signal
Multiplier : 1.0000
Dilution : 1.0000
Use Multiplier & Dilution Factor with ISTDs

Signal 1: DAD1 B, Sig=254,16 Ref=off

Peak #	Ret. Time [min]	Type	Width [min]	Area [mAU*s]	Height [mAU]	Area %
1	8.567	BB	0.1110	9458.46094	1329.14172	99.4870
2	14.736	BB	0.1287	48.77155	5.88648	0.5130

Total: 9507.23249 1335.02820



MedKoo Cat#: 206424

Name: Telatinib

CAS#: 332012-40-5

Lot#: TZC51225

Chemical Formula: C20H16ClN5O3

Exact Mass: 409.09417

Molecular Weight: 409.83

Telatinib MS Analysis

=====
Acq. Operator : [BSB1] Seq. Line : 10
Acq. Instrument : Instrument 1 Location : Vial 13
Inj : 1
Inj Volume : 1.000 µl
Acq. Method : C:\CHEM32\1\DATA\TEST-1-POS-KR.M
Analysis Method : C:\CHEM32\1\METHODS\TEST-1-POS.M
Method Info : Test for Compound

MS Spectrum

