

# 6-Shogaol NMR analysis, solvent = CDCl3



6.852  
6.835  
6.831  
6.817  
6.811  
6.795  
6.778  
6.711  
6.706  
6.692  
6.688  
6.673  
6.668  
6.111  
6.108  
6.104  
6.072  
6.068  
6.064  
3.864  
2.881  
2.863  
2.851  
2.843  
2.841  
2.838  
2.832  
2.830  
2.828  
2.822  
2.813  
2.802  
2.220  
2.216  
2.202  
2.198  
2.183  
2.180  
2.165  
2.162  
1.462  
1.444  
1.426  
1.324  
1.319  
1.316  
1.309  
1.303  
1.294  
1.291  
1.285  
1.278  
1.268  
1.264  
1.260  
0.906  
0.889  
0.872

Current Data Parameters  
 NAME 6-shogaol-1H NMR CDCl3  
 EXPNO 1  
 PROCNO 1

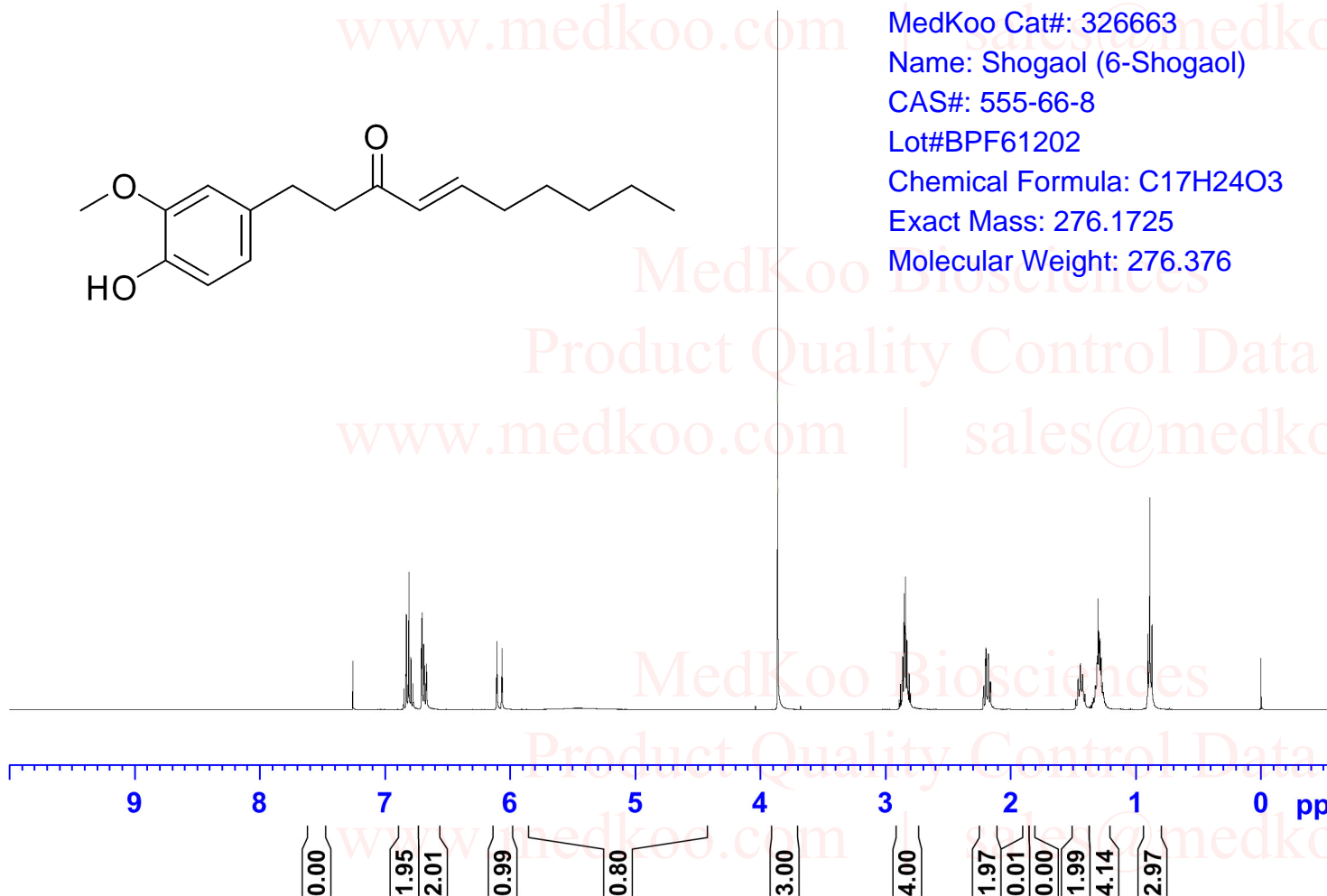
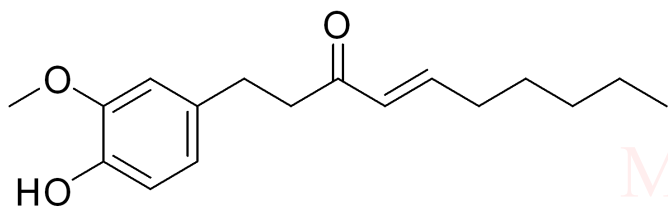
F2 - Acquisition Parameters  
 SWH 8012.820 Hz

MedKoo Cat#: 326663  
 Name: Shogaol (6-Shogaol)  
 CAS#: 555-66-8  
 Lot#BPF61202  
 Chemical Formula: C17H24O3  
 Exact Mass: 276.1725  
 Molecular Weight: 276.376

INSTRUM spect  
 PROBHD 5 mm PABBO BB/  
 PULPROG zg30  
 TD 65536  
 SOLVENT CDCl3  
 NS 58  
 DS 2  
 FIDRES 0.122266 Hz  
 AQ 4.0894465 sec  
 RG 63.67  
 DW 62.400 usec  
 DE 6.50 usec  
 TE 301.1 K  
 D1 2.00000000 sec  
 TD0 1

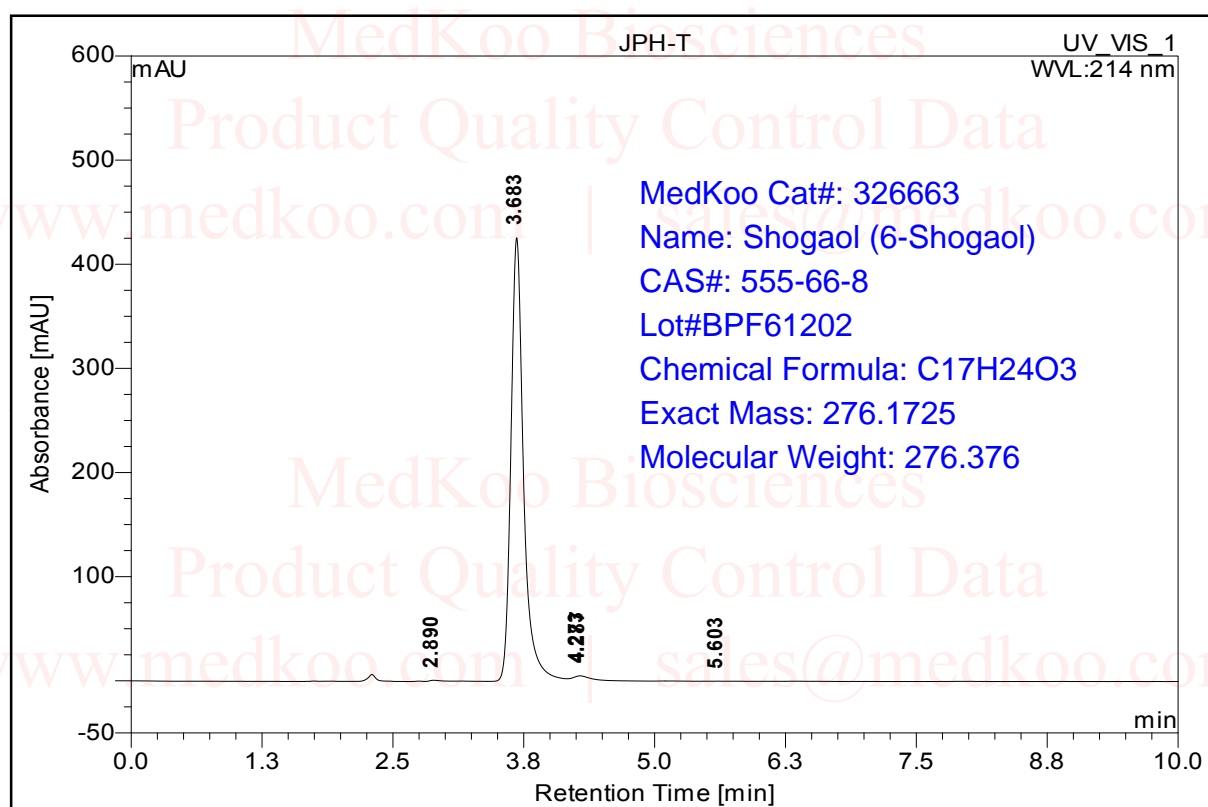
===== CHANNEL f1 =====  
 SFO1 400.1324710 MHz  
 NUC1 1H  
 P1 14.79 usec  
 PLW1 11.50800037 W

F2 - Processing parameters  
 SI 262144  
 SF 400.1300097 MHz  
 WDW no  
 SSB 0  
 LB 0 Hz  
 GB 0  
 PC 1.00



**HPLC REPORT**

Sample Name:	JPH-T	Injection Volume:	5.0
Vial Number:	RB4	Channel:	UV_VIS_1
Sample Type:	unknown	Wavelength:	214
Control Program:		Bandwidth:	4
Quantif. Method:	default	Dilution Factor:	1.0000
Recording Time:	2016-12-5 18:46	Sample Weight:	1.0000
Run Time (min):	10.30	Sample Amount:	1.0000



No.	Ret.Time min	Peak Name	Height mAU	Area mAU*min	Rel.Area %	Amount n.a.	Type
1	2.89	n.a.	0.909	0.084	0.14	n.a.	BMB*
2	3.68	n.a.	425.920	59.630	98.14	n.a.	BM *
3	4.27	n.a.	4.670	0.340	0.56	n.a.	M *
4	4.29	n.a.	4.788	0.682	1.12	n.a.	MB*
5	5.60	n.a.	0.076	0.023	0.04	n.a.	BMB*
<b>Total:</b>			436.363	60.759	100.00	0.000	

**6-Shogaol HPLC analysis**

# 6-Shogaol MS analysis

EM=276

C:\MassLynx\Default.pro\Data

15-Jan-2016

Waters ZQ

6-SHOGAOL-1601504-MS+ 96 (1.774)

Scan ES+  
8.91e7

