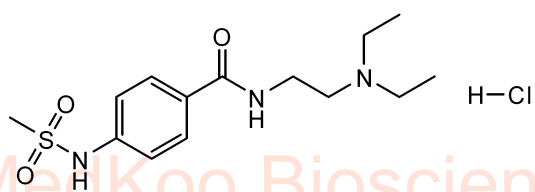


Sematilide hydrochloride HNMR Analysis, solvent DMSO-d6

Product Quality Control Data

www.medkoo.com Sales@medkoo.com



MedKoo Cat#: 526330

Name: Sematilide hydrochloride

CAS#: 101526-62-9 (HCl)

Lot#: A8T09K08

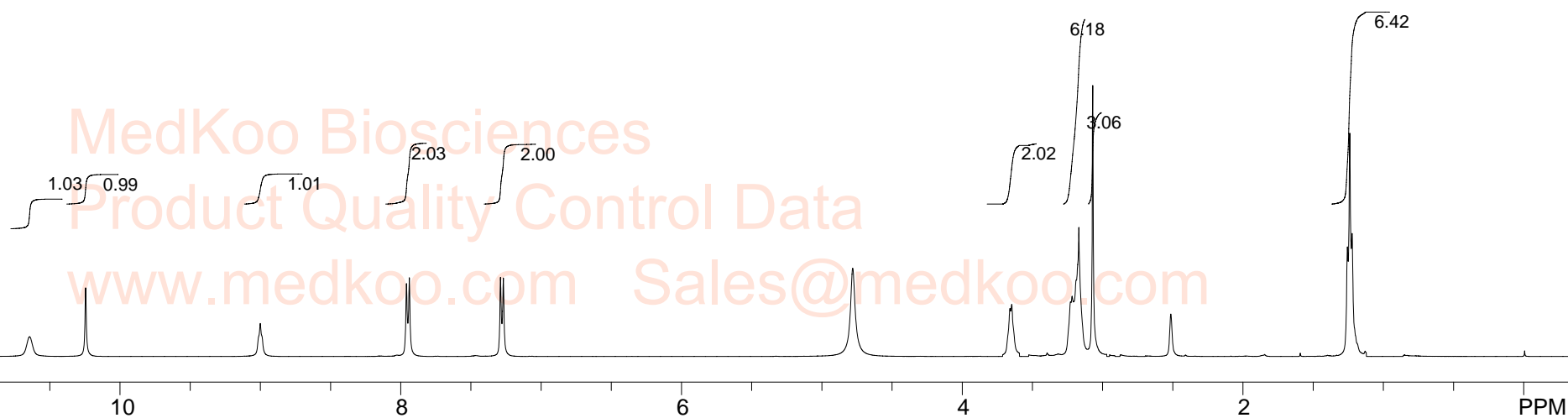
Chemical Formula: C₁₄H₂₄ClN₃O₃S

Molecular Weight: 349.87

MedKoo Biosciences

Product Quality Control Data

www.medkoo.com Sales@medkoo.com



MedKoo Biosciences

Product Quality Control Data

www.medkoo.com Sales@medkoo.com

spect, DMSO,

F1: 400.142

EX: zg30

MedKoo Biosciences

SWH: 6224

PW: 14.4 usec

www.medkoo.com

OP1: 2475.5

NA: 8

sales@medkoo.com

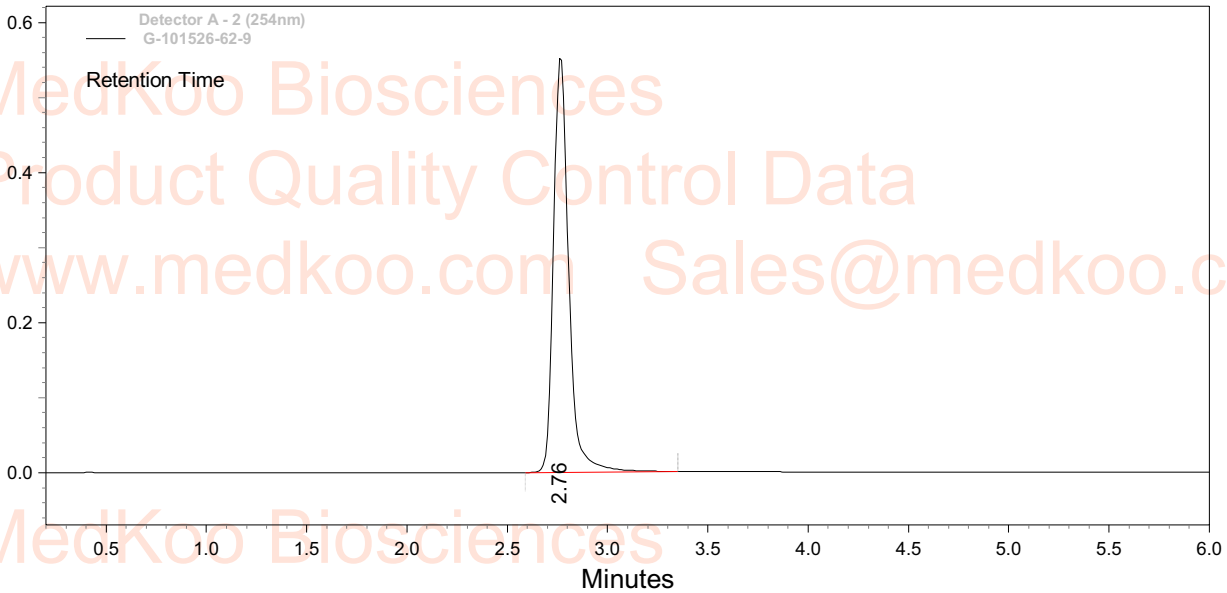
PR: 65530

LB: 0.0

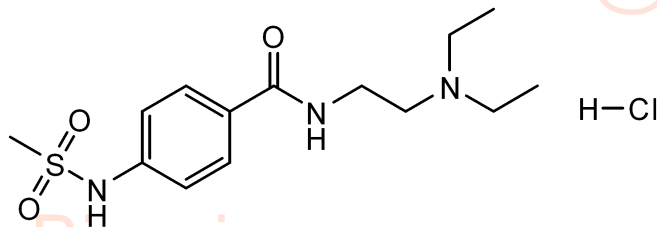
\$pdata

Sematilide hydrochloride HPLC Analysis

Compound ID : G-101526-62-9
Filename/Sample ID : D:\data\1809
Method Name : D:\Method of 5cm\0-60_1.2ml.met



Retention Time	Height	Area	Area Percent
2.76	552112	2918812	100.00

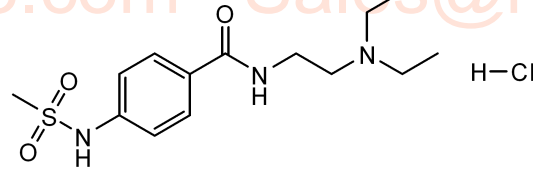


MedKoo Cat#: 526330
Name: Sematilide hydrochloride
CAS#: 101526-62-9 (HCl)
Lot#: A8T09K08
Chemical Formula: C₁₄H₂₄ClN₃O₃S
Molecular Weight: 349.87

Sematilide hydrochloride MS Analysis

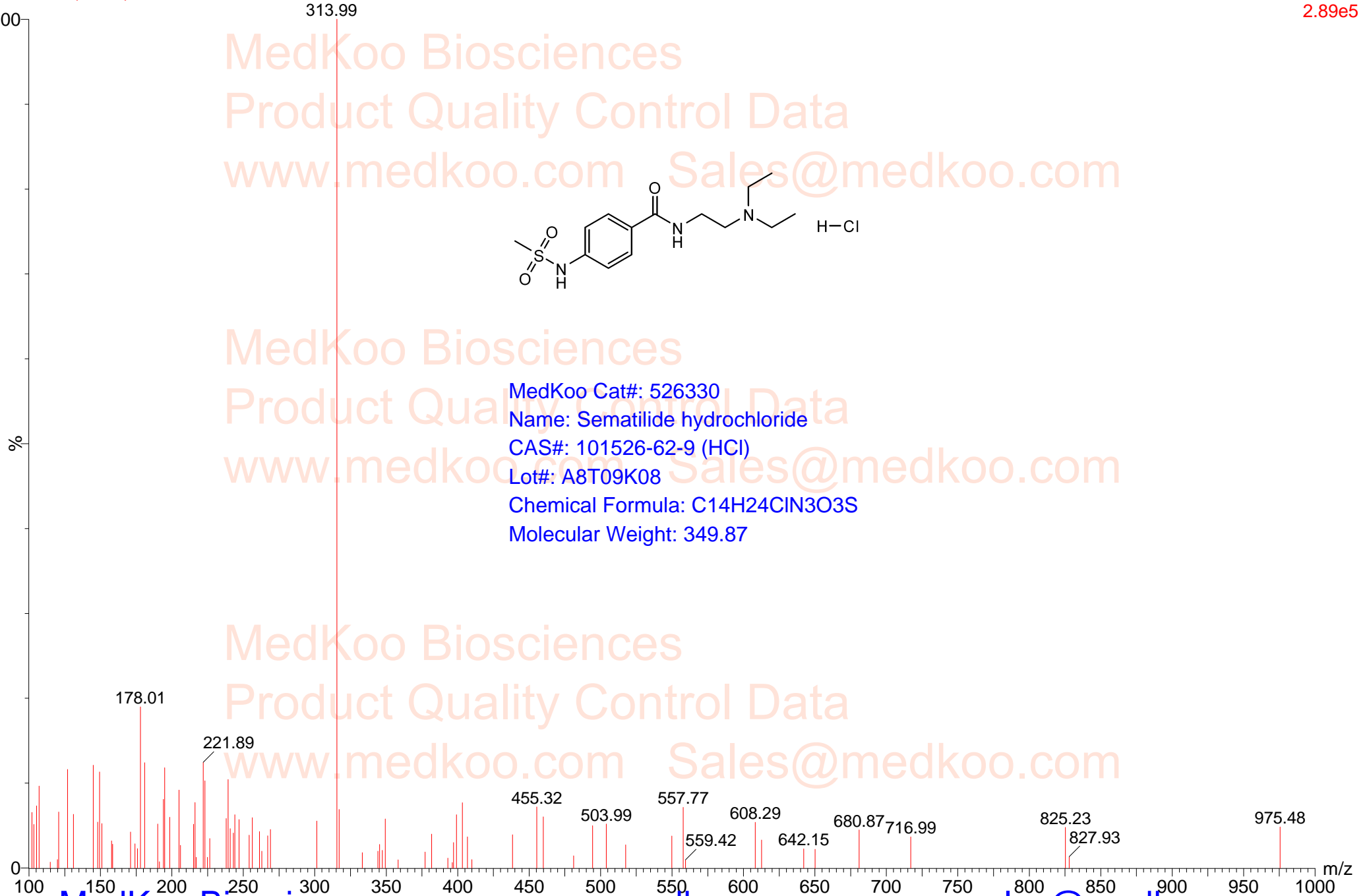
P-Z-16 80 (0.252)

1: Scan ES+
2.89e5



MedKoo Biosciences
Product Quality Control Data
www.medkoo.com Sales@medkoo.com

MedKoo Cat#: 526330
Name: Sematilide hydrochloride
CAS#: 101526-62-9 (HCl)
Lot#: A8T09K08
Chemical Formula: C₁₄H₂₄ClN₃O₃S
Molecular Weight: 349.87



MedKoo Biosciences

www.medkoo.com

sales@medkoo.com