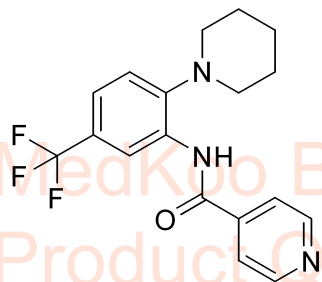
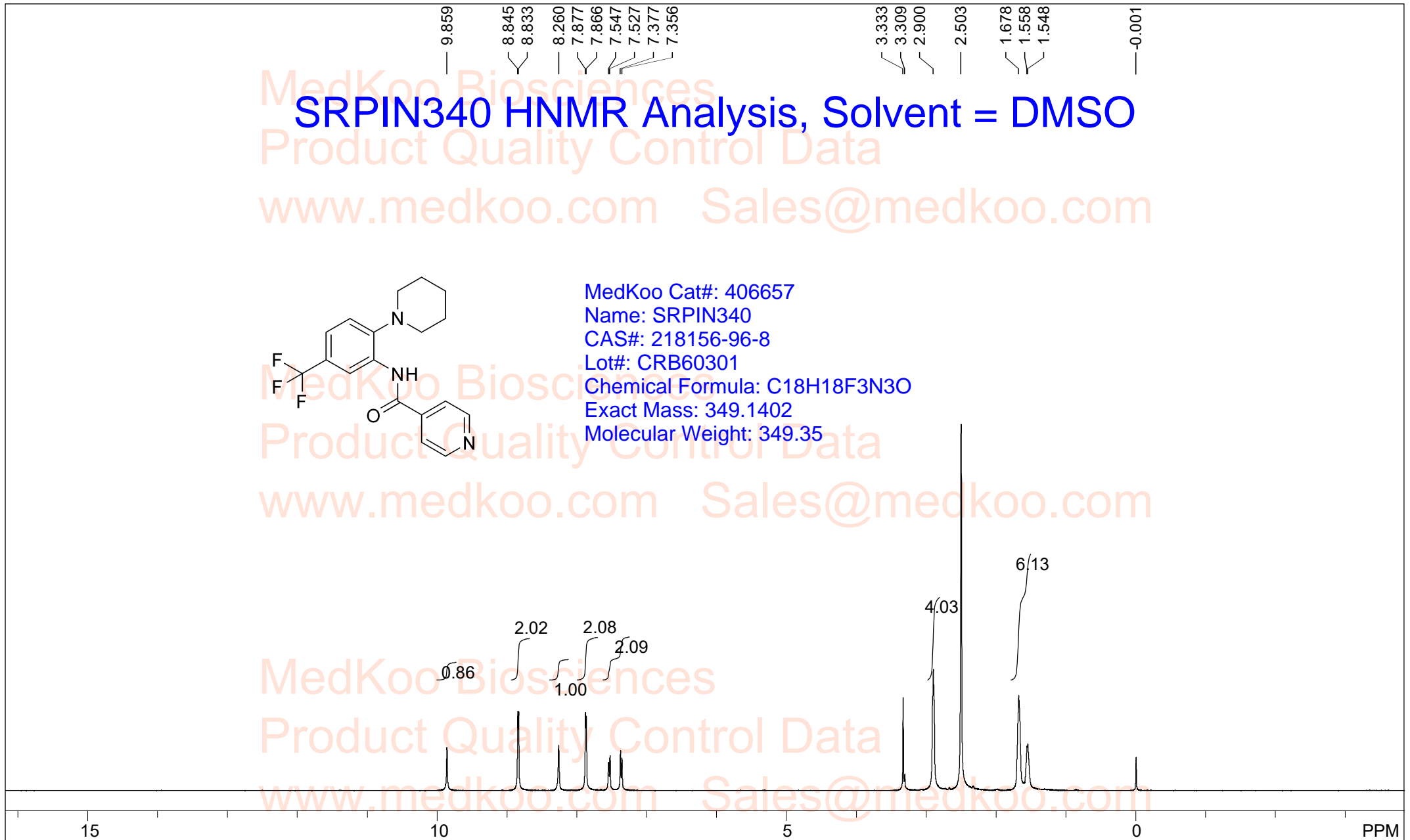


SRPIN340 HNMR Analysis, Solvent = DMSO

Product Quality Control Data
www.medkoo.com Sales@medkoo.com



MedKoo Cat#: 406657
Name: SRPIN340
CAS#: 218156-96-8
Lot#: CRB60301
Chemical Formula: C₁₈H₁₈F₃N₃O
Exact Mass: 349.1402
Molecular Weight: 349.35



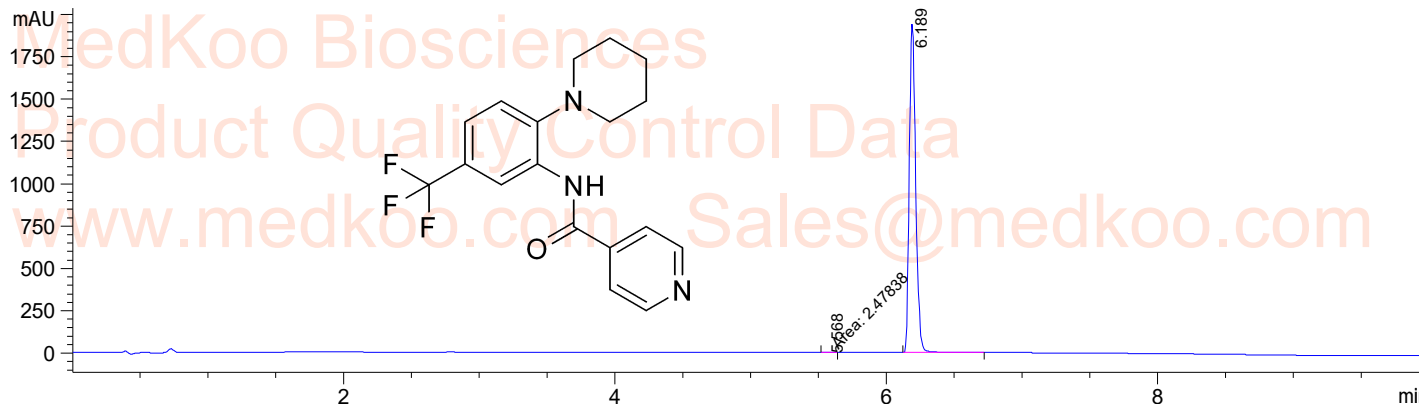
| | | | | | | | |
|--------------|-----------|---------------|-------------|-------------|---------|--------------|----------------|
| spect, DMSO, | | | | | | | |
| F1: 400.132 | F2: 1.000 | SW1: 8013 | | OF1: 2468.8 | | PTS1d: 65536 | |
| EX: zg30 | | PW: 14.8 usec | PD: 1.0 sec | NA: 16 | LB: 0.0 | | Nuts - \$pdata |

SRPIN340 HPLC Analysis

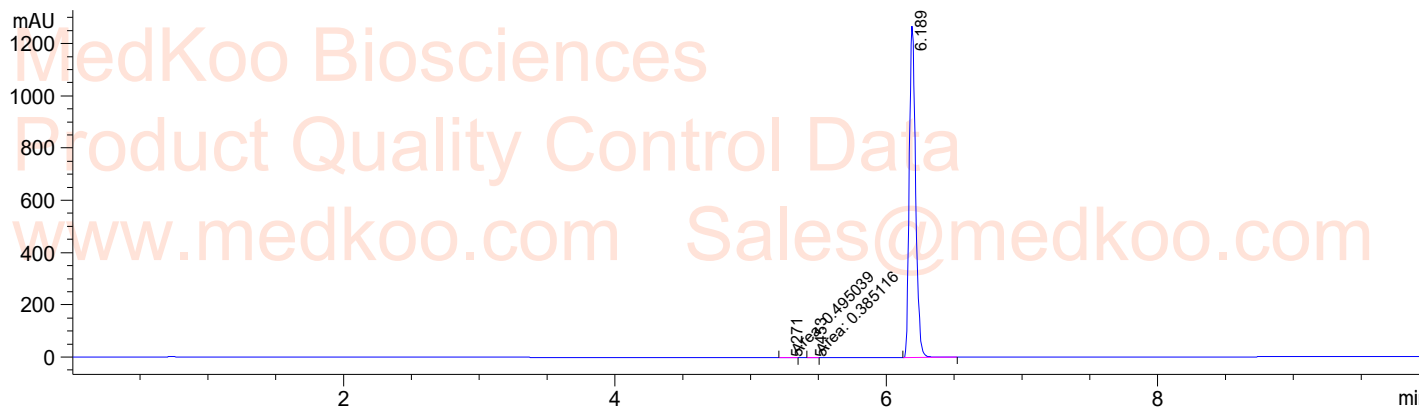
Sample Name : 3010-C
 Acq. Operator : 3
 Spec. Reported : Integration

Tgt Mass(EZX) :
 Location : P2-D-01
 Inj : 0
 Inj Volume : 2.5 ul

DAD1 A, Sig=214,4 Ref=off



DAD1 B, Sig=254,4 Ref=off



Integration Results for DAD1 A, Sig=214,4 Ref=off

| RetTim | Width | Area | Height | Area% |
|--------|-------|---------|---------|-------|
| 5.57 | 0.05 | 2.48 | 0.79 | 0.04 |
| 6.19 | 0.05 | 6391.87 | 1938.63 | 99.96 |

Integration Results for DAD1 B, Sig=254,4 Ref=off

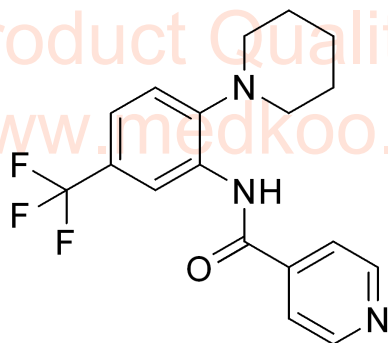
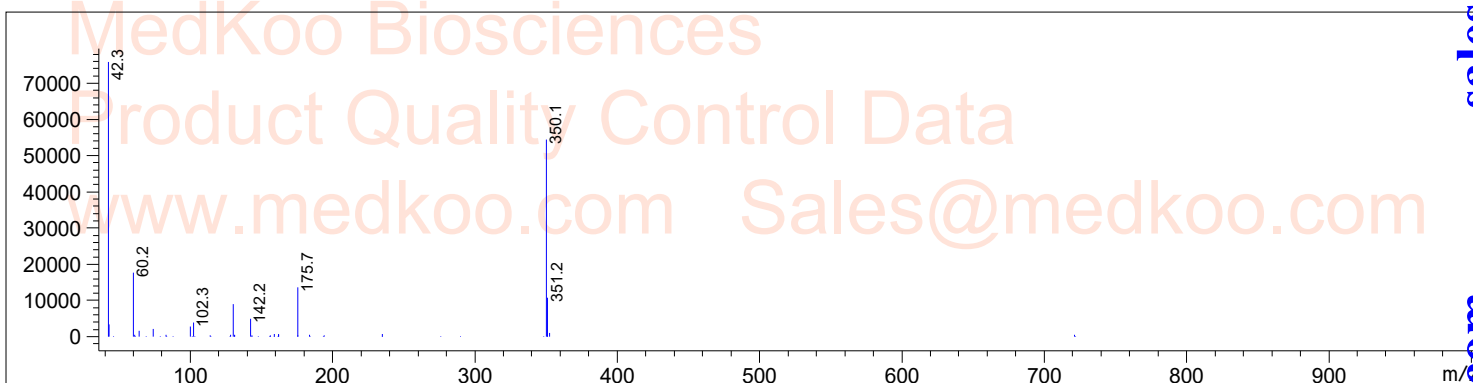
| RetTim | Width | Area | Height | Area% |
|--------|-------|---------|---------|-------|
| 5.27 | 0.05 | 0.50 | 0.15 | 0.01 |
| 5.45 | 0.04 | 0.39 | 0.14 | 0.01 |
| 6.19 | 0.05 | 4143.15 | 1266.98 | 99.98 |

MedKoo Cat#: 406657
 Name: SRPIN340
 CAS#: 218156-96-8
 Lot#: CRB60301
 Chemical Formula: C₁₈H₁₈F₃N₃O
 Exact Mass: 349.1402
 Molecular Weight: 349.35

SRPIN 340 MS Analysis

Sample Name : A1
Acq. Operator : 8

Tgt Mass(EZX) :



MedKoo Cat#: 406657

Name: SRPIN340

CAS#: 218156-96-8

Lot#: CRB60301

Chemical Formula: C₁₈H₁₈F₃N₃O

Exact Mass: 349.1402

Molecular Weight: 349.35

MedKoo Biosciences

Product Quality Control Data

www.medkoo.com Sales@medkoo.com

sales@medkoo.com

www.medkoo.com

MedKoo Biosciences