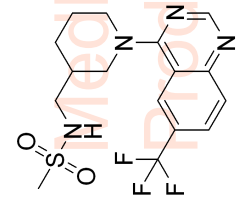




SRI-37330 HCl, d6-DMSO, 400MHz



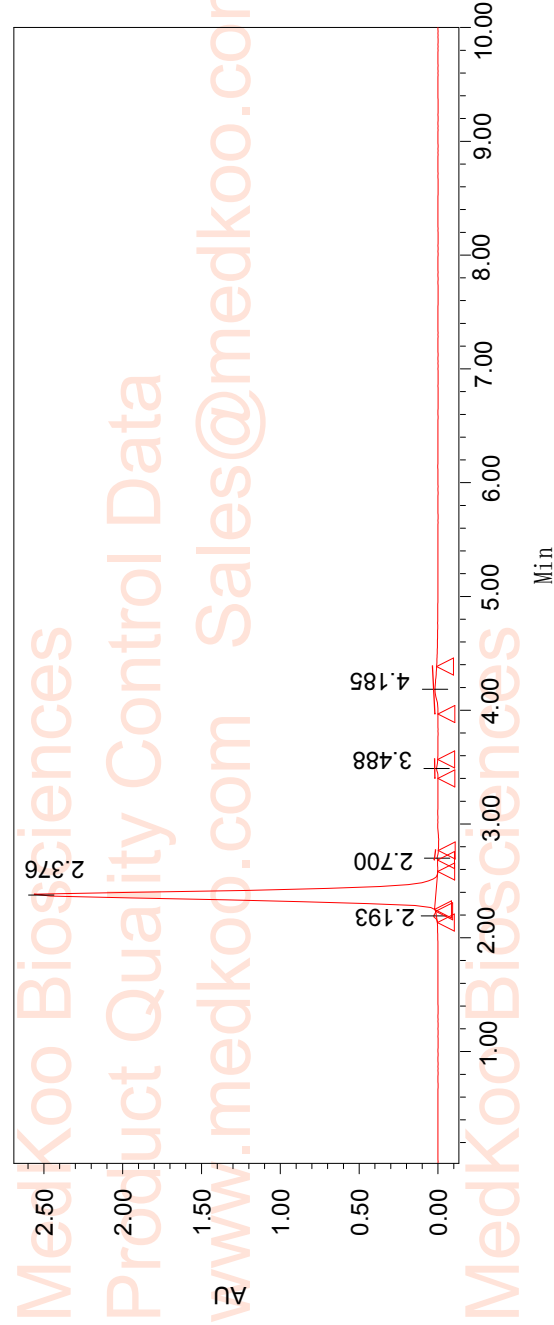
MedKoo Cat#: 471191
 Name: SRI-37330 free base
 CAS#: 2322245-42-9 (free base)
 Lot#: S22S03C31
 Chemical Formula: C₁₆H₁₉F₃N₄O₂S
 Exact Mass: 388.118
 Molecular Weight: 388.41

SRI-37330 HCl, d6-DMSO, 400MHz		PTSId: 16384
F1: 399.820	SW1: 6410	OF1: 2398.9
EX: s2pul	PW: 9.2 usec	NA: 16
	PD: 5.0 sec	LB: 0.0
		Nuts - \$PROTON 01.fid

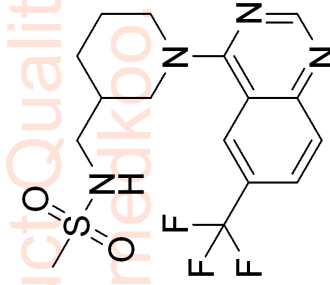
SRI-37330 HPLC Analysis

Sample SRI-37330 HCl
Name: Sample
Type: Vial: 1-A, 2
Injection: 1
Inj. Volume: 3.00ul
Run Time: 10 Minutes

System
User: 80MeOH_20H2O SRI-37330 HCl
Acq. Method: W2996 214.0nm-1.2 W2996 PDA
Method
Channel: 214.0 nm (1.2)
Channel:



Peak #	Ret. Time (Min)	Area (uV*s)	Height (uV)	%Area
1	2.193	42350	14959	0.29
2	2.376	14214967	2509774	98.34
3	2.700	8638	4410	0.06
4	3.488	31100	7762	0.22
5	4.185	158340	14047	1.10



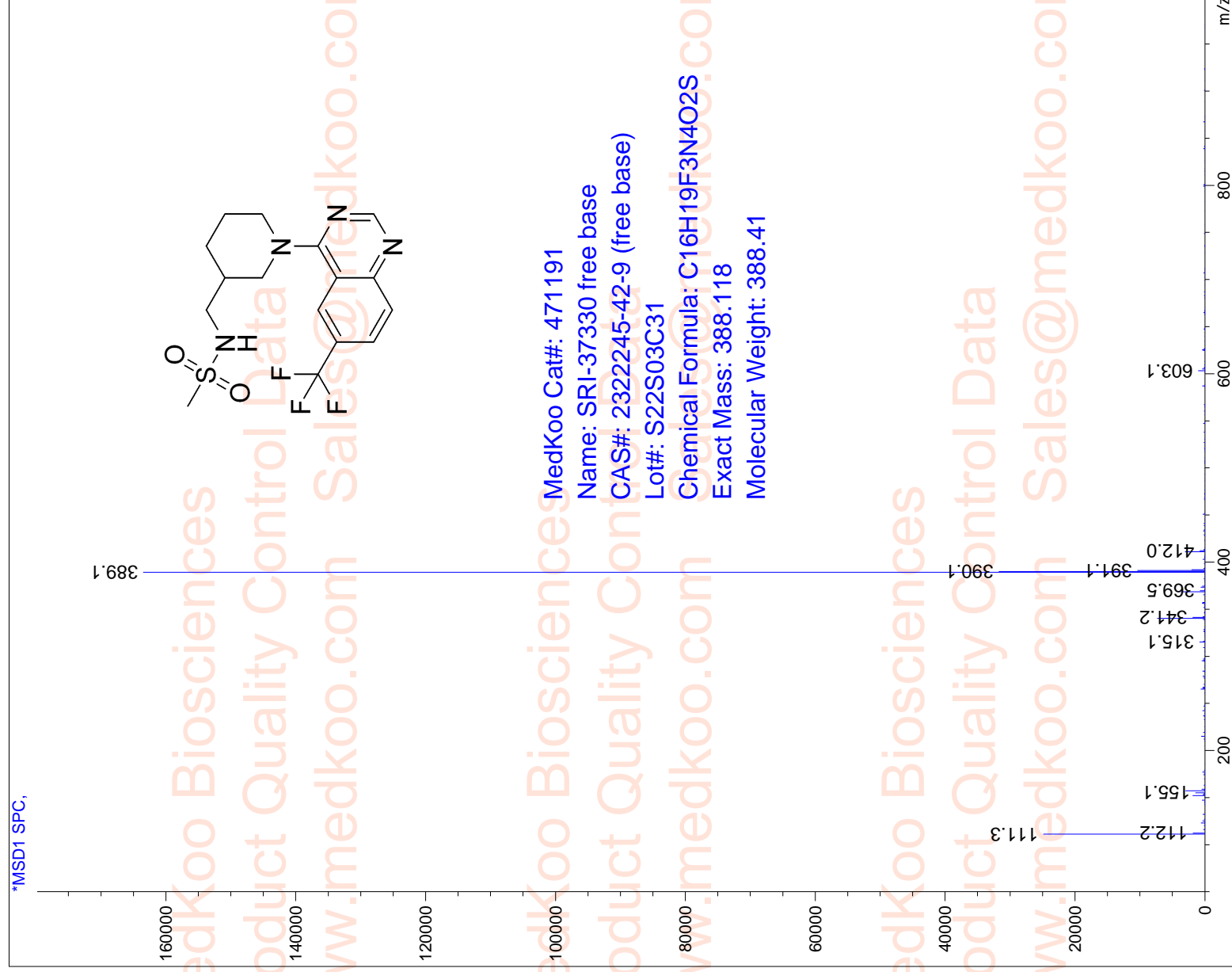
MedKoo Cat#: 471191
Name: SRI-37330 free base
CAS#: 2322245-42-9 (free base)
Lot#: S22S03C31
Chemical Formula: C16H19F3N4O2S
Exact Mass: 388.118
Molecular Weight: 388.41

SRI-37330 MS Analysis

sales@medkoo.com

www.medkoo.com

MedKoo Biosciences



MedKoo Biosciences

Product Quality Control Data

www.medkoo.com Sales@medkoo.com

MedKoo Biosciences

Product Quality Control Data

www.medkoo.com Sales@medkoo.com

MedKoo Biosciences

Product Quality Control Data

www.medkoo.com Sales@medkoo.com