

6.19  
6.16  
6.14  
6.11

5.57  
5.55

5.10  
5.06  
5.04

4.56  
4.54

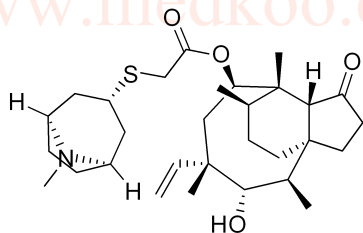
3.45  
3.44  
3.43  
3.33  
3.25  
3.22  
3.19  
3.16  
3.05  
3.02  
3.01  
2.99  
2.98

2.50  
2.43

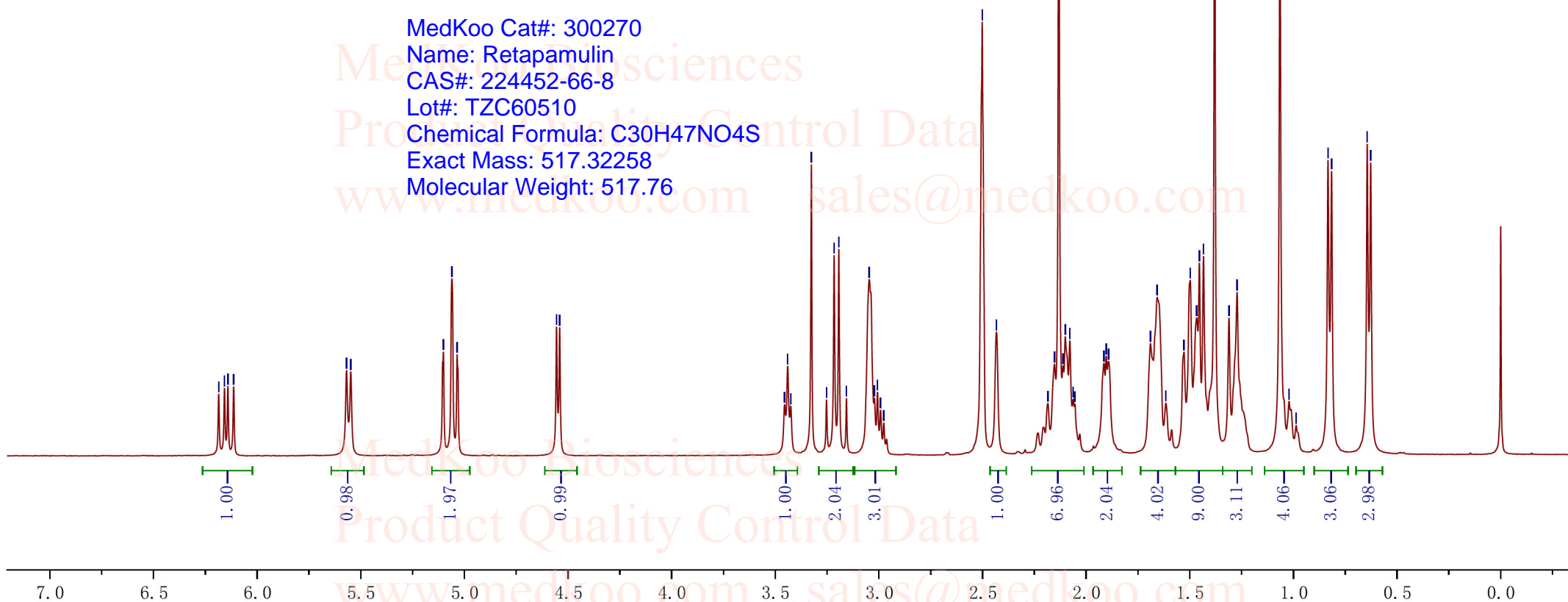
2.15  
2.13  
2.10  
2.08  
1.91  
1.90  
1.89

1.66  
1.50  
1.47  
1.45  
1.43  
1.38  
1.31  
1.27  
1.02  
0.99  
0.83  
0.82  
0.64  
0.63

# Retapamulin HNMR Analysis, Solvent = DMSO

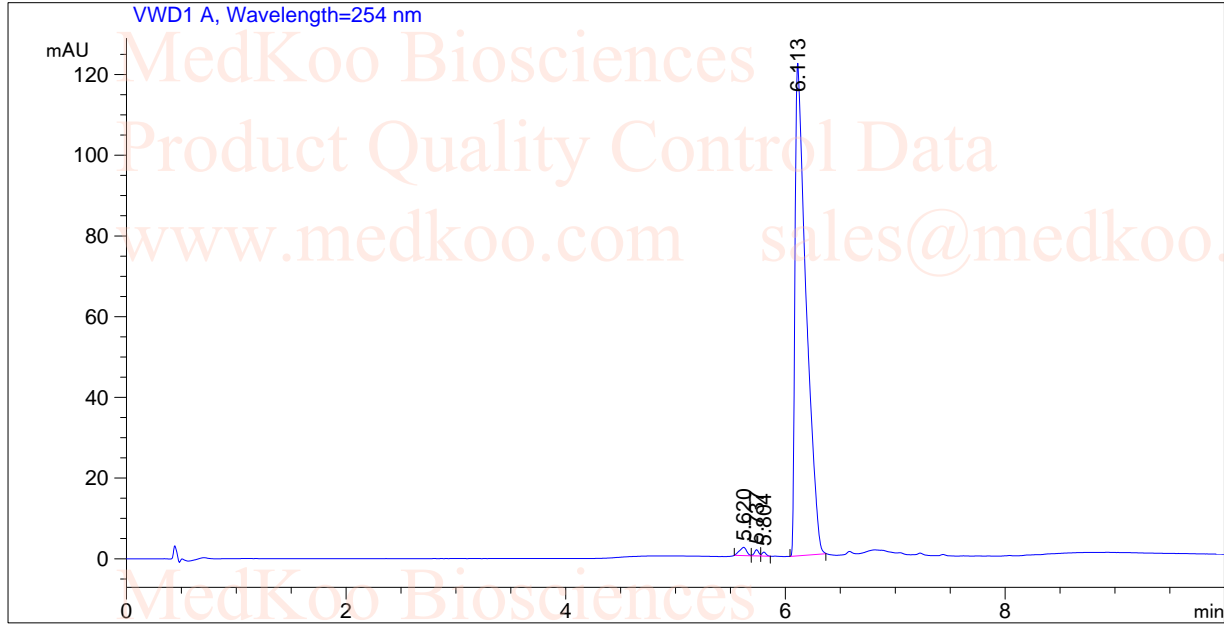


MedKoo Cat#: 300270  
Name: Retapamulin  
CAS#: 224452-66-8  
Lot#: TZC60510  
Chemical Formula: C<sub>30</sub>H<sub>47</sub>NO<sub>4</sub>S  
Exact Mass: 517.32258  
Molecular Weight: 517.76



# Retapamulin HPLC Analysis

=====  
Acq. Operator : 1  
Acq. Instrument : Instrument 1 Location : Vial 0  
Sample Name : 224452-66-8  
Acq. Method : D:\CHEM32\  
Analysis Method : D:\CHEM32\  
Sample Info : [A = ACN, B = 0.1% H3PO4/H2O] 0% A/B 2 min, 0-95% A/B 4 min, 95% A/B 3 min, 95-0% A/B 1 min; Athena C18 (3 µm, 2.1 mm × 100 mm); Flow: 0.4 ml/min, T = 40 °C  
=====



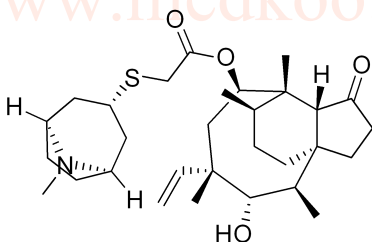
=====  
Area Percent Report  
=====

Sorted By : Signal  
Multiplier: : 1.0000  
Dilution: : 1.0000  
Use Multiplier & Dilution Factor with ISTDs

Signal 1: VWD1 A, Wavelength=254 nm

Peak #	RetTime [min]	Type	Width [min]	Area mAU*s	Height [mAU]	Area %
1	5.620	BV	0.0668	9.29236	2.04701	1.0644
2	5.737	VV	0.0406	4.14270	1.55225	0.4745
3	5.804	VB	0.0384	2.55506	1.00461	0.2927
4	6.113	BB	0.0987	856.99683	122.06250	98.1683

Totals : 872.98694 126.66638

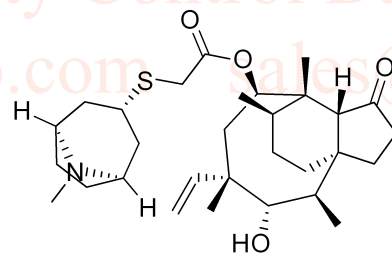
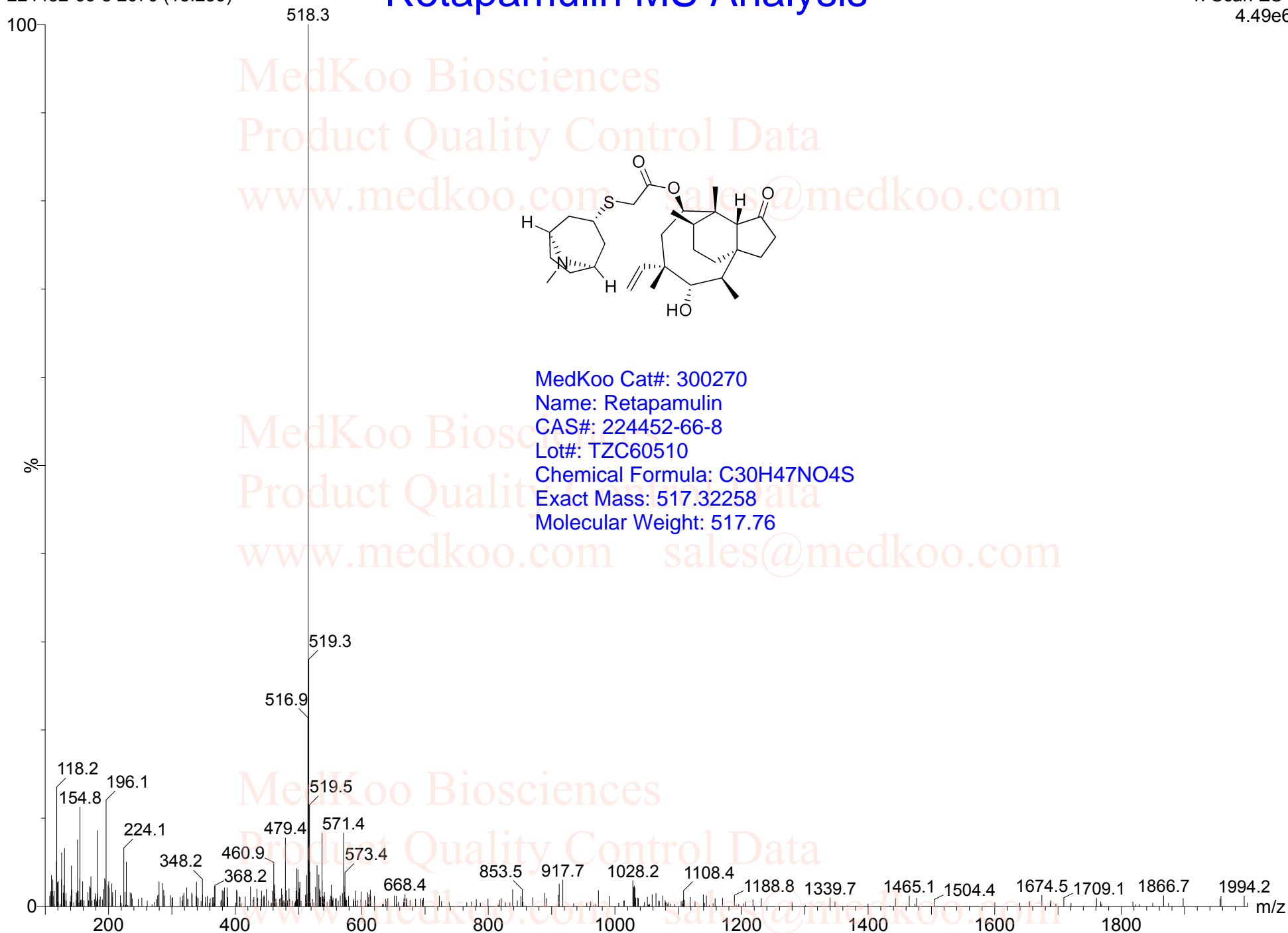


MedKoo Cat#: 300270  
Name: Retapamulin  
CAS#: 224452-66-8  
Lot#: TZC60510  
Chemical Formula: C30H47NO4S  
Exact Mass: 517.32258  
Molecular Weight: 517.76

224452-66-8 2070 (15.259)

# Retapamulin MS Analysis

1: Scan ES+  
4.49e6



MedKoo Cat#: 300270  
Name: Retapamulin  
CAS#: 224452-66-8  
Lot#: TZC60510  
Chemical Formula: C<sub>30</sub>H<sub>47</sub>NO<sub>4</sub>S  
Exact Mass: 517.32258  
Molecular Weight: 517.76