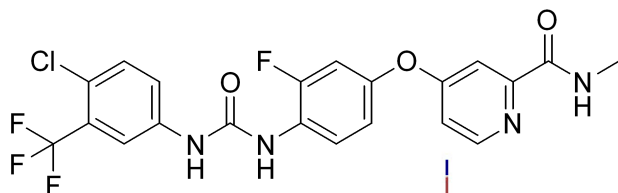




# Regorafenib HNMR Analysis, Solvent = DMSO-d6



MedKoo Cat#: 202436

Name: Regorafenib

CAS#: 755037-03-7

Lot#: TZC50818

Chemical Formula: C<sub>21</sub>H<sub>15</sub>ClF<sub>4</sub>N<sub>4</sub>O<sub>3</sub>

Exact Mass: 482.07688

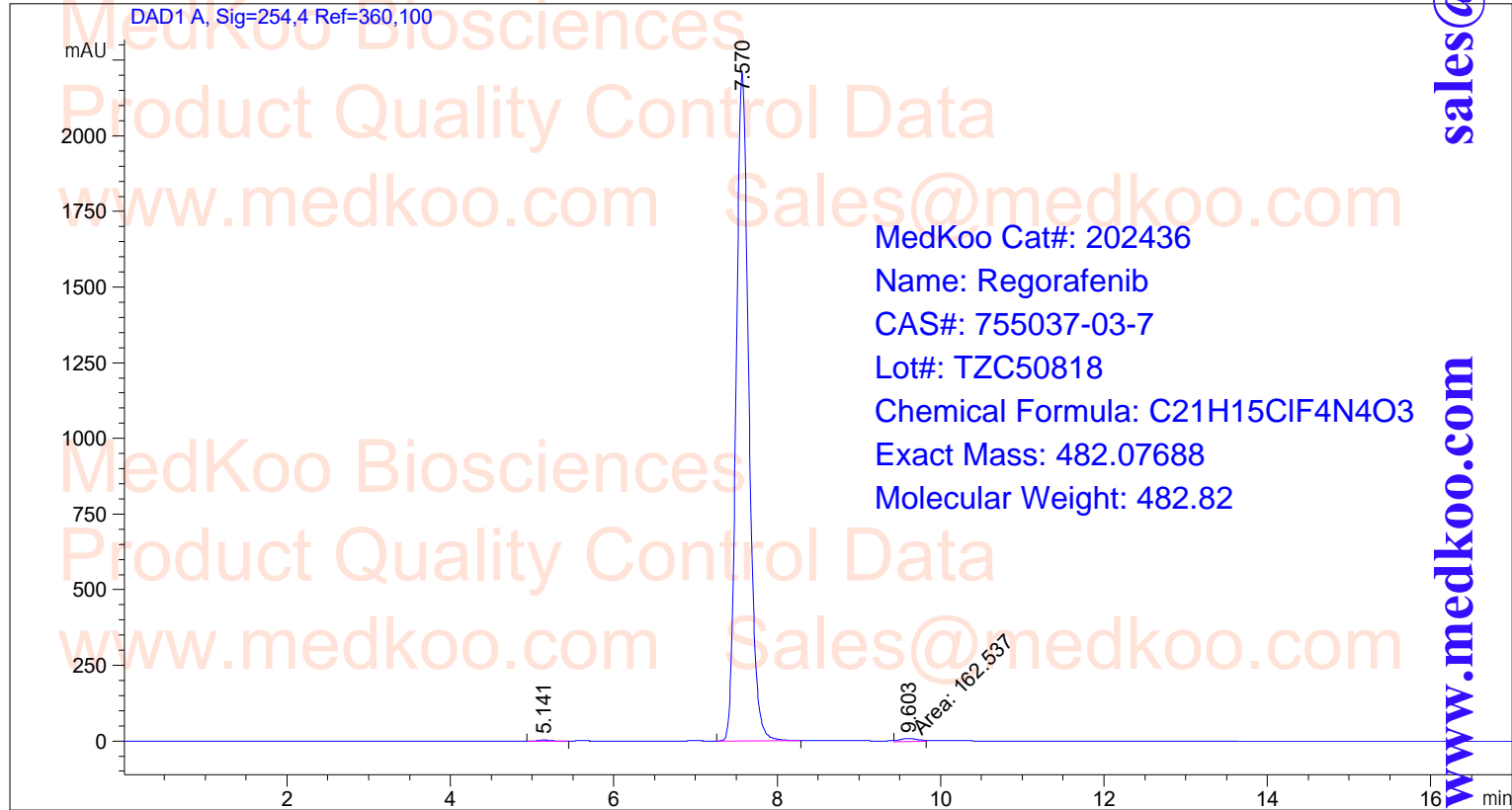
Molecular Weight: 482.82



# Regorafenib HPLC Analysis

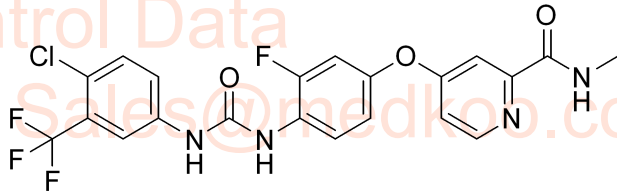
=====  
Acq. Operator : SYSTEM  
Sample Operator : SYSTEM  
Acq. Instrument : HPLC1260 Location : 1  
Acq. Method : D:\Methods\def\_LC.M Inj Volume : 0.500 µl  
Analysis Method : D:\Methods\def\_LC.M

Additional Info : Peak(s) manually integrated



## Area Percent Report

=====  
Sorted By : Signal  
Multiplier : 1.0000  
Dilution : 1.0000  
Use Multiplier & Dilution Factor with ISTDs  
Signal 1: DAD1 A, Sig=254,4 Ref=360,100



Peak #	RetTime [min]	Type	Width [min]	Area [mAU*s]	Height [mAU]	Area %
1	5.141	BB	0.1175	23.66338	3.01829	0.0986
2	7.570	BB	0.1658	2.38184e4	2209.50391	99.2243
3	9.603	MM	0.2556	162.53677	10.59767	0.6771

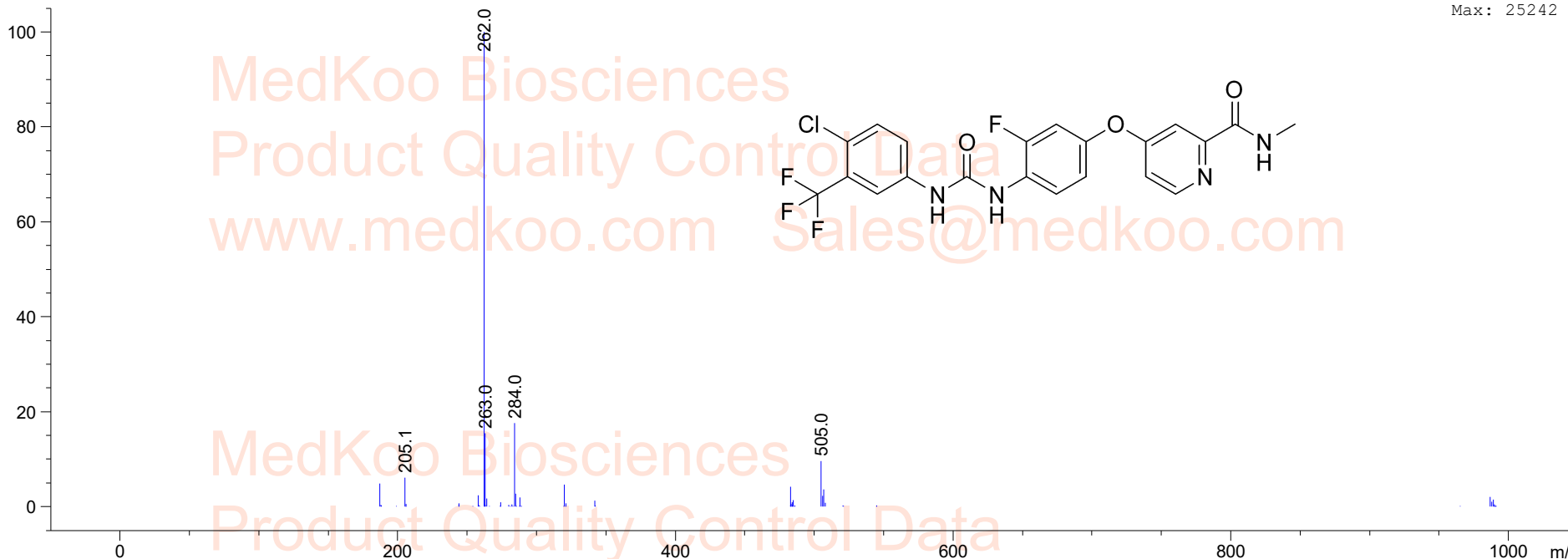
Totals : 2.40046e4 2223.11987

# Regorafenib MS Analysis

MS Spectrum

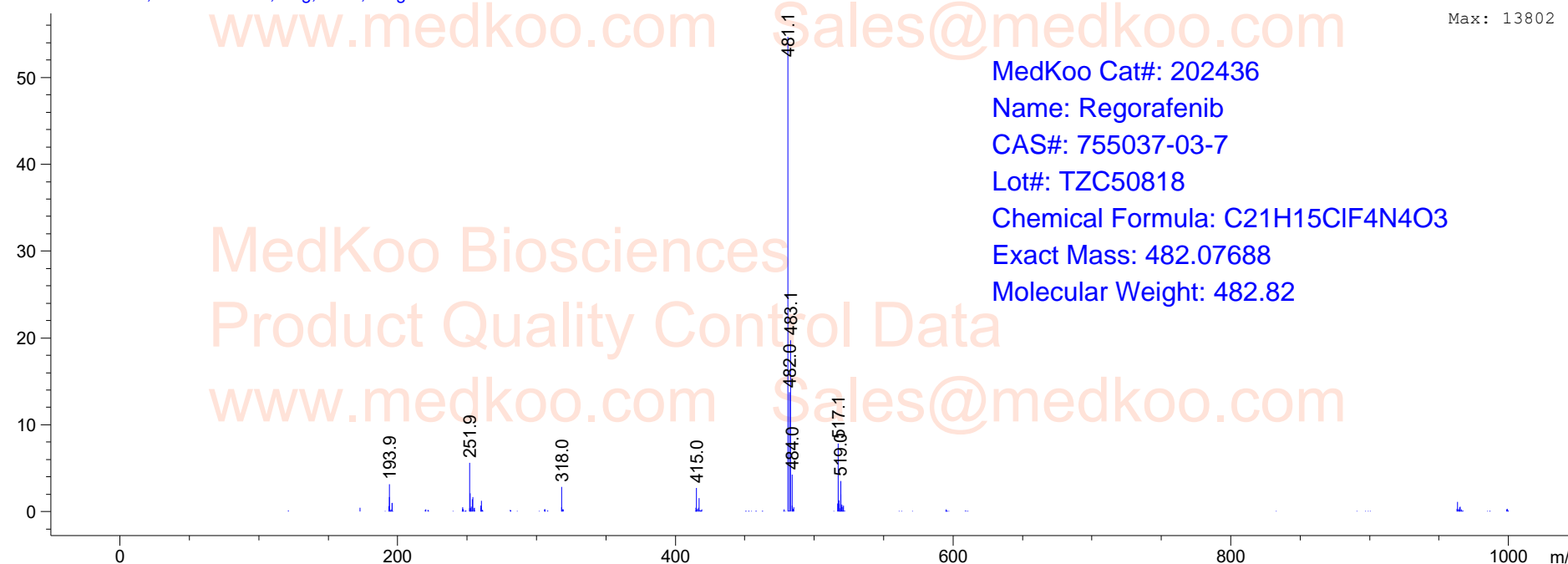
\*MSD1 SPC, MM-ES+APCI, Pos, Scan, Frag: 70

Max: 25242



\*MSD2 SPC, MM-ES+APCI, Neg, Scan, Frag: 70

Max: 13802



MedKoo Cat#: 202436  
Name: Regorafenib  
CAS#: 755037-03-7  
Lot#: TZC50818  
Chemical Formula: C<sub>21</sub>H<sub>15</sub>ClF<sub>4</sub>N<sub>4</sub>O<sub>3</sub>  
Exact Mass: 482.07688  
Molecular Weight: 482.82