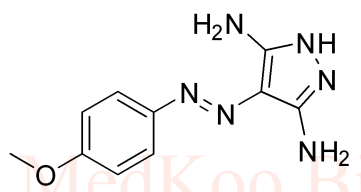
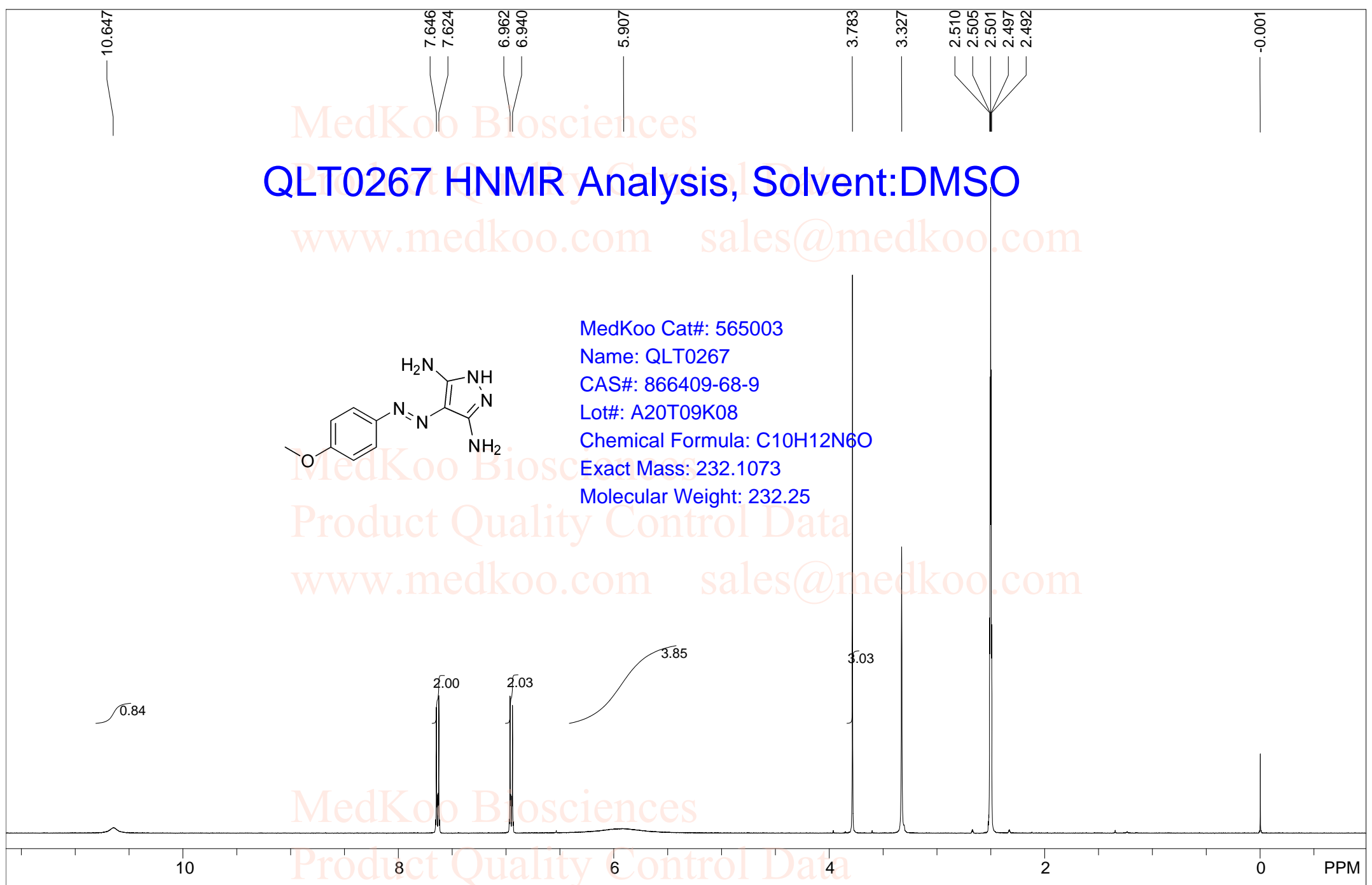


# QLT0267 HNMR Analysis, Solvent:DMSO



MedKoo Cat#: 565003  
Name: QLT0267  
CAS#: 866409-68-9  
Lot#: A20T09K08  
Chemical Formula: C<sub>10</sub>H<sub>12</sub>N<sub>6</sub>O  
Exact Mass: 232.1073  
Molecular Weight: 232.25



1DMSO					
F1: 400.130	F2: 1.000	SW1: 8224	OF1: 2468.3	PTS1d: 32768	
EX: zg30	PW: 5.00 usec	PD: 10.00 usec	LB: 0.3		

# QLT0267 HPLC Analysis

Sample Name : 6975-75-3

Method Info : Mobile Phase: A: water(0.01%TFA) B: ACN(0.01%TFA)

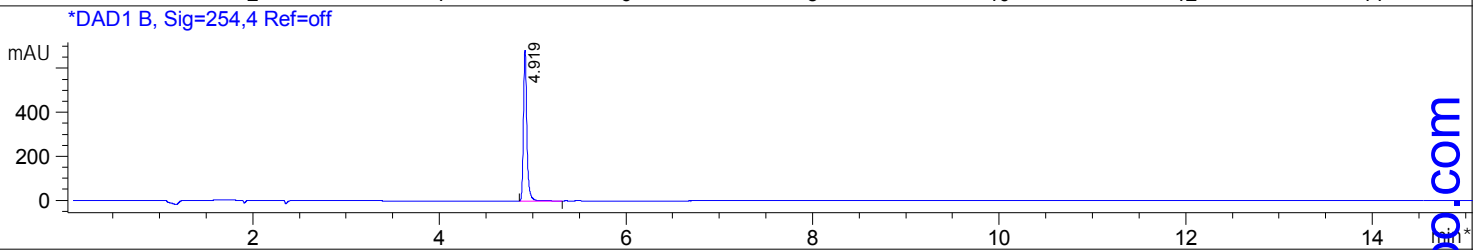
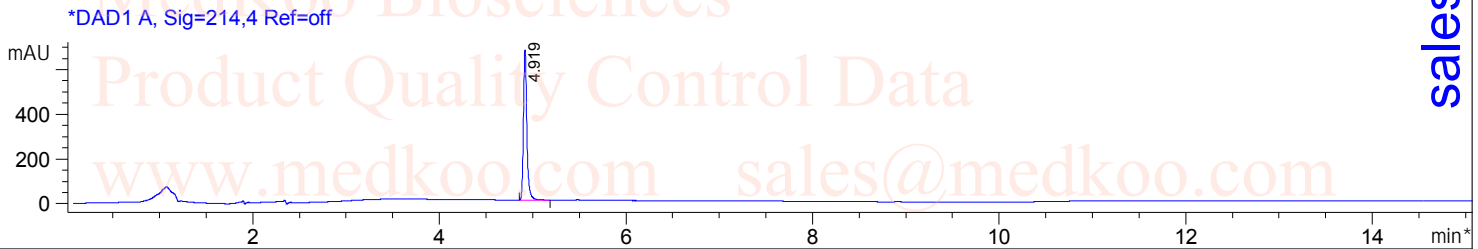
Gradient: 5% increase to 95%B within 7.5 min, 95%B for 7.5 min.

Flow Rate: 1.0ml/min

Column:Sunfire C18,4.6\*150mm,3.5um

Column Temperature: 45 C

Detection:UV(214,4nm) and MS(ESI,Pos mode,110 to 1500 amu)

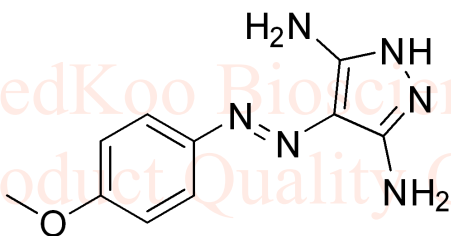


Integration Results for DAD1 A, Sig=214,4 Ref=off

RetTim	Width	Area	Height	Area%
4.92	0.04	1700.29	673.65	100.00

Integration Results for DAD1 B, Sig=254,4 Ref=off

RetTim	Width	Area	Height	Area%
4.92	0.04	1740.29	687.63	100.00



MedKoo Cat#: 565003

Name: QLT0267

CAS#: 866409-68-9

Lot#: A20T09K08

Chemical Formula: C10H12N6O

Exact Mass: 232.1073

Molecular Weight: 232.25

# QLT0267 LC/MS Analysis

Sample Name : 6975-75-3

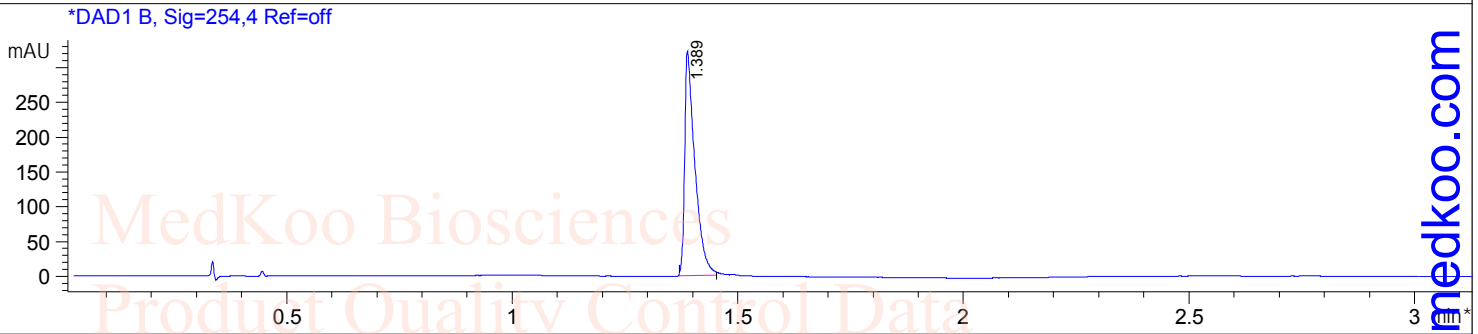
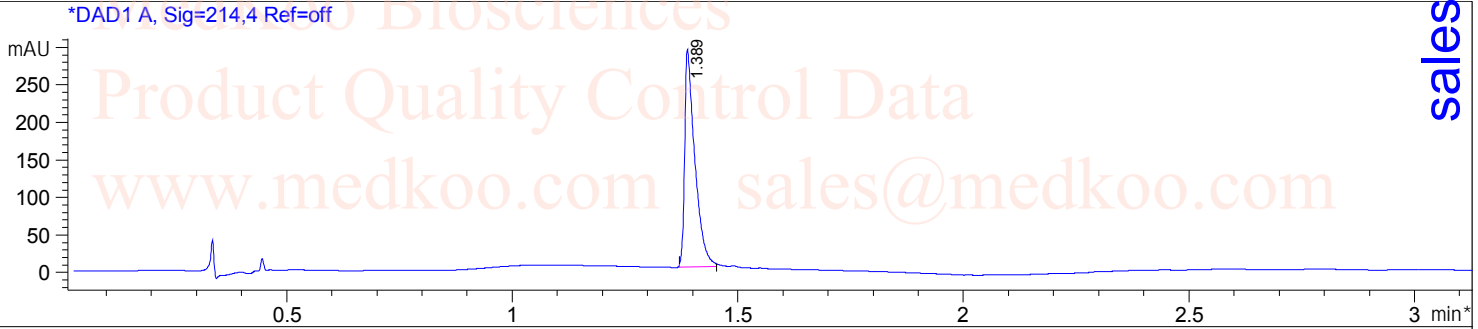
Method Info : Column:SunFire C18 (4.6x 50 mm,3.5 um)

Mobile phase: H2O(0.01%TFA) (A) / ACN(0.01%TFA) (B)

Elution program: Gradient from 10 to95% of B in 1.4 min at 2ml/min

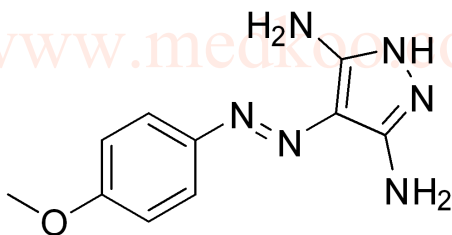
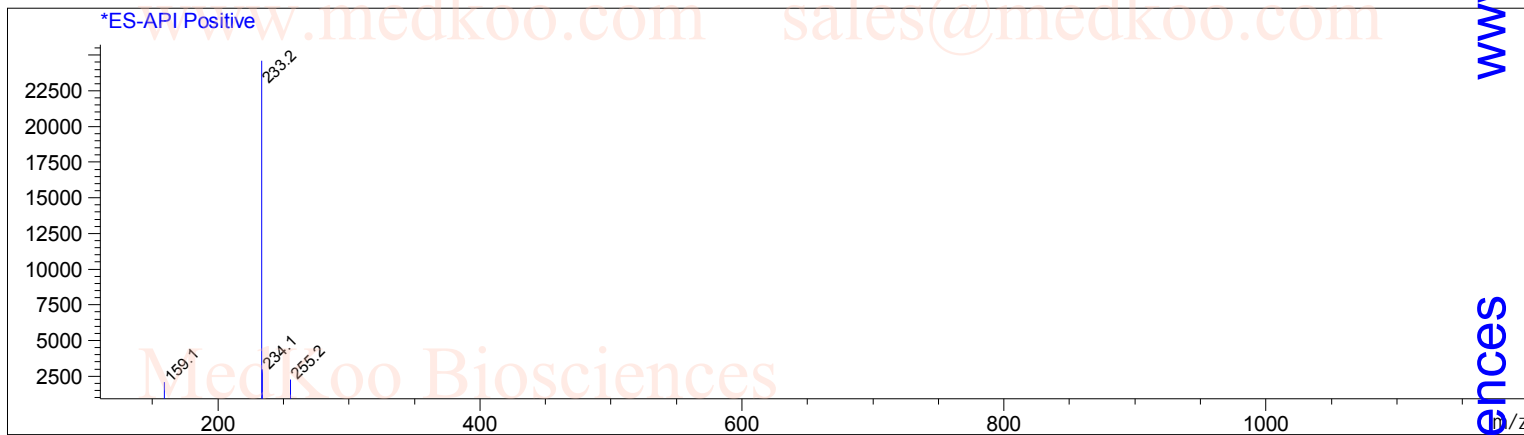
Temperature: 50 °C

Detection: UV (214 , 4 nm) and MS (ESI, Pos mode ,110 to 1000 amu)



Ret. Time: 1.39

<<<< POSITIVE SPECTRA >>>>



MedKoo Cat#: 565003

Name: QLT0267

CAS#: 866409-68-9

Lot#: A20T09K08

Chemical Formula: C<sub>10</sub>H<sub>12</sub>N<sub>6</sub>O

Exact Mass: 232.1073

Molecular Weight: 232.25

sales@medkoo.com

www.medkoo.com

MedKoo Biosciences