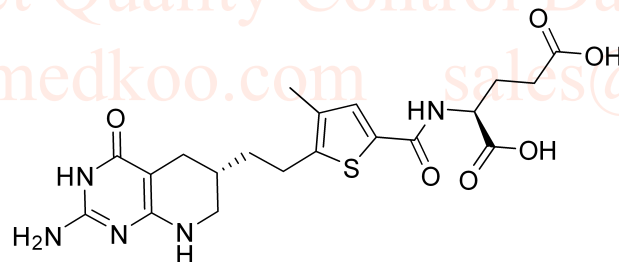
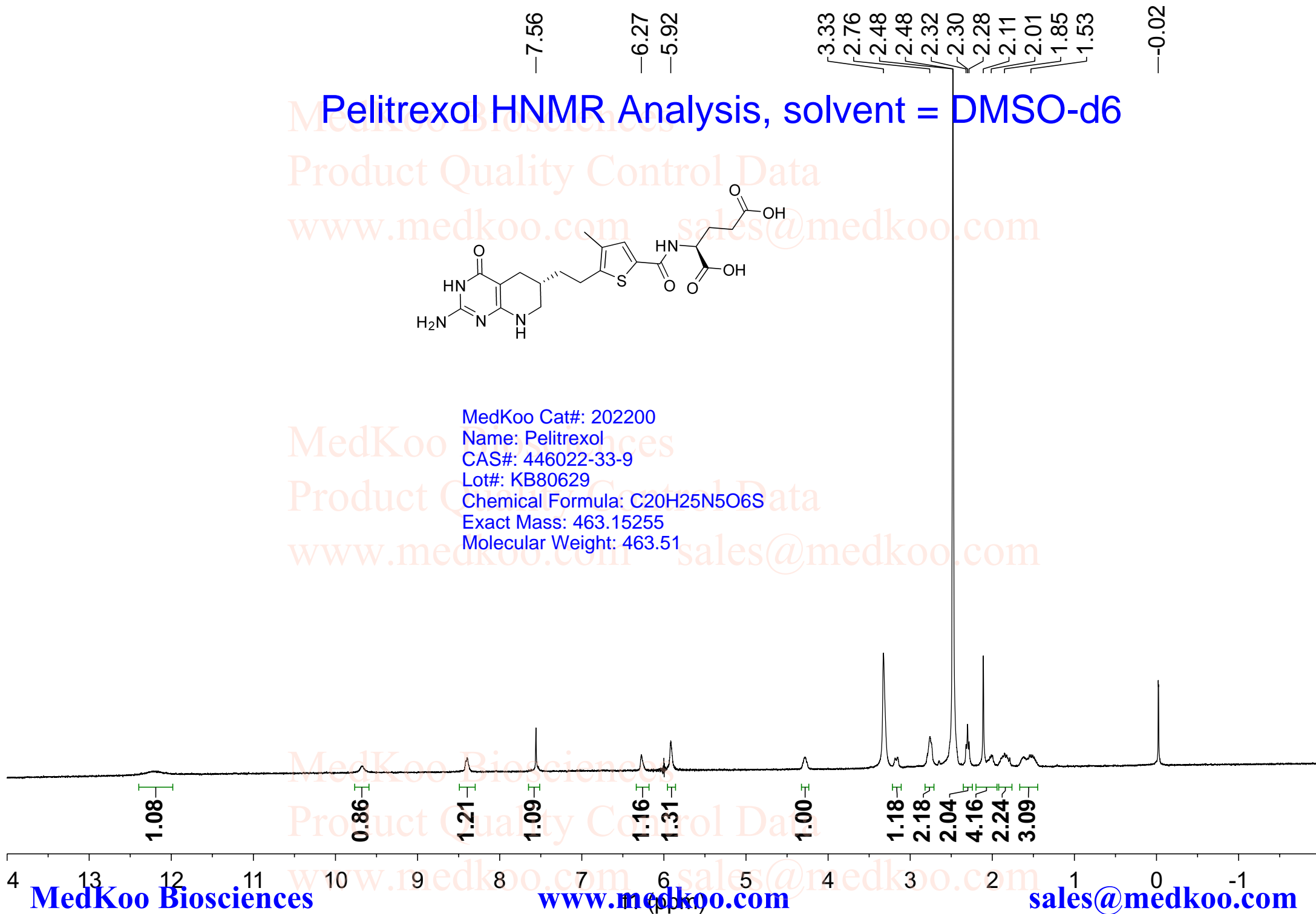


Pelitrexol HNMR Analysis, solvent = DMSO-d6



MedKoo Cat#: 202200
Name: Pelitrexol
CAS#: 446022-33-9
Lot#: KB80629
Chemical Formula: C₂₀H₂₅N₅O₆S
Exact Mass: 463.15255
Molecular Weight: 463.51



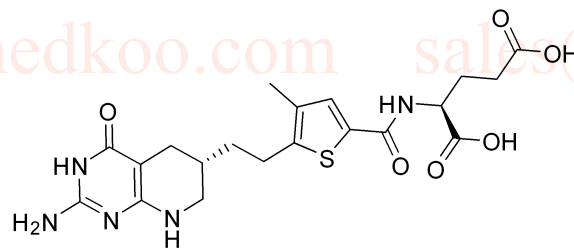
174.29
173.81
162.00
161.90
153.74
144.51
134.51
133.84
131.95

82.22
52.16
45.57
40.56
40.35
40.14
39.93
39.72
39.51
39.30
34.79
31.07
30.79
26.40
13.85

Pelitrexol CNMR analysis, solvent = DMSO-d6

Product Quality Control Data

www.medkoo.com sales@medkoo.com



MedKoo Cat#: 202200

Name: Pelitrexol

CAS#: 446022-33-9

Lot#: KB80629

Chemical Formula: C20H25N5O6S

Exact Mass: 463.15255

Molecular Weight: 463.51

Product Quality Control Data

www.medkoo.com sales@medkoo.com

www.medkoo.com sales@medkoo.com

Product Quality Control Data

www.medkoo.com sales@medkoo.com

210 190 170 150 130 110 90 80 70 60 50 40 30 20 10 0
MedKoo Biosciences www.medkoo.com sales@medkoo.com

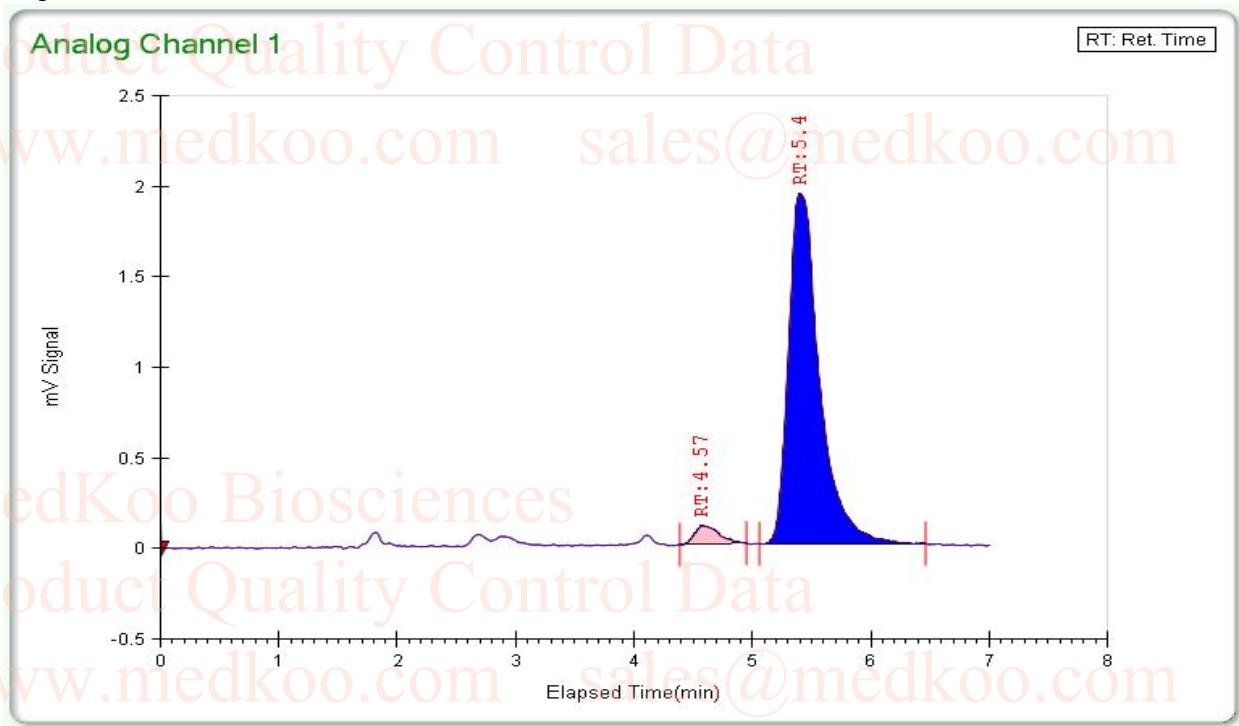
Pelitrexol Chiral HPLC analysis

General Info

File Name LLD-PEAK2_1.tta

Method Name Method-40_2.4ml.met

Injection Volume 5
Co-Solvent IPA(0.05%DEA)
Column AD-H
Co-Solvent % 40
Total Flow 2.4
Wavelength 220
Injection Info



Peak Name	Area %	RT (min)	St. (min)	End (min)
Peak1	3.9171	4.57	4.3859	4.9438
Peak2	96.0829	5.4	5.0586	6.4586
Theoretical Plates	Resolution Peak1	Resolution Peak2	Height	
2681.2623	0	2.1288	0.1016	
2555.6121	-2.1288	0	1.9317	

Peak Info

MedKoo Cat#: 202200

Name: Pelitrexol

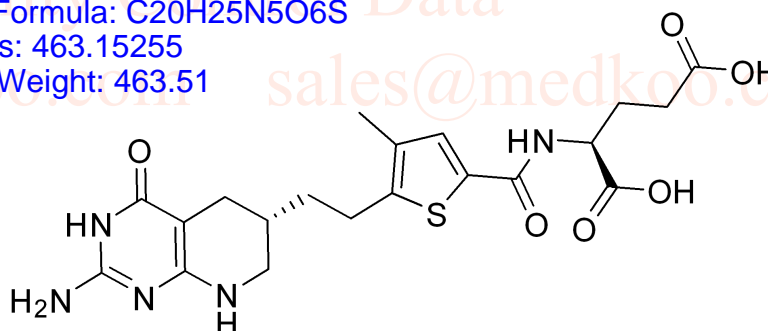
CAS#: 446022-33-9

Lot#: KB80629

Chemical Formula: C₂₀H₂₅N₅O₆S

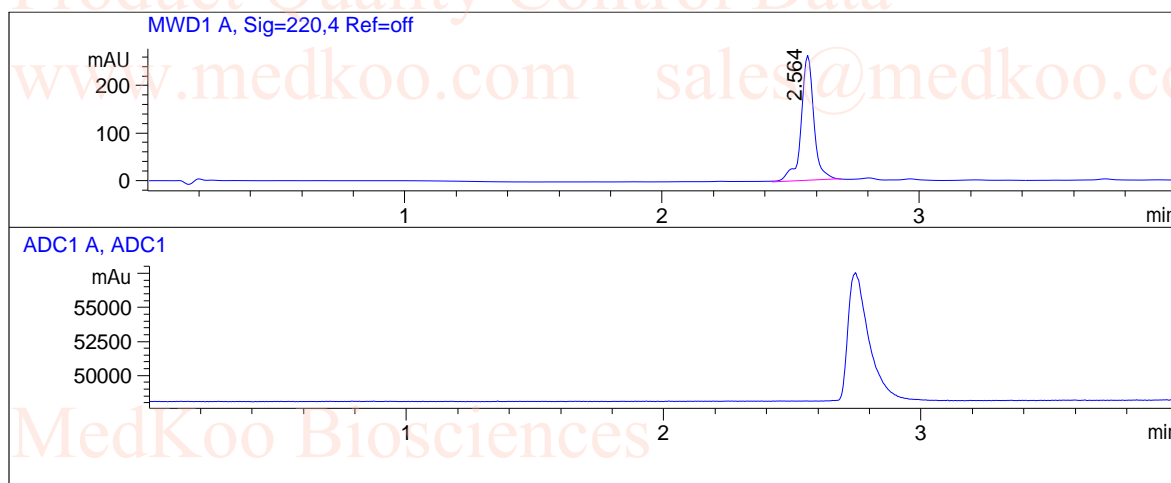
Exact Mass: 463.15255

Molecular Weight: 463.51



Pelitrexol HPLC Analysis

Compound ID :
Sample ID : ÁLLD-PEAK2
Location : Á P2-C-01
Acq Method : Á D:\DATA\ -80AB_4MIN.MÁ
Data Filename : D:\DATA\LLD-PEAK2.D
Instrument : LCMS 12-116
Column : Xtimate C18, 2.1*30mm, 3um, SN: 3U411201566



Report

Signal 1 : MWD1 A, Sig=220,4 Ref=off

#	Meas. Ret.	Height	Width	Area	Area %
1	2.564	265.422	0.057	910.802	100.000

MedKoo Cat#: 202200

Name: Pelitrexol

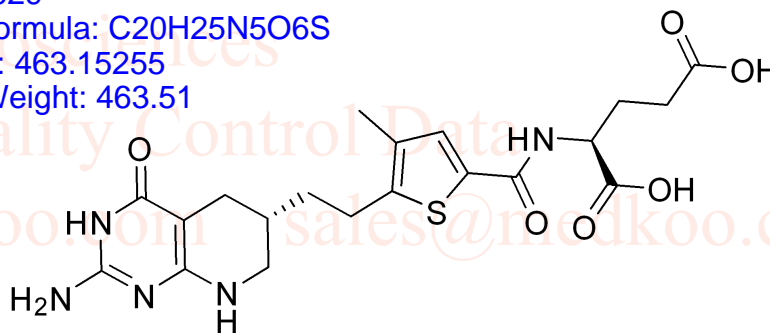
CAS#: 446022-33-9

Lot#: KB80629

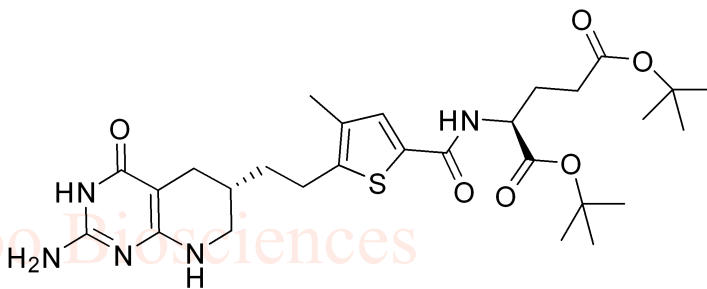
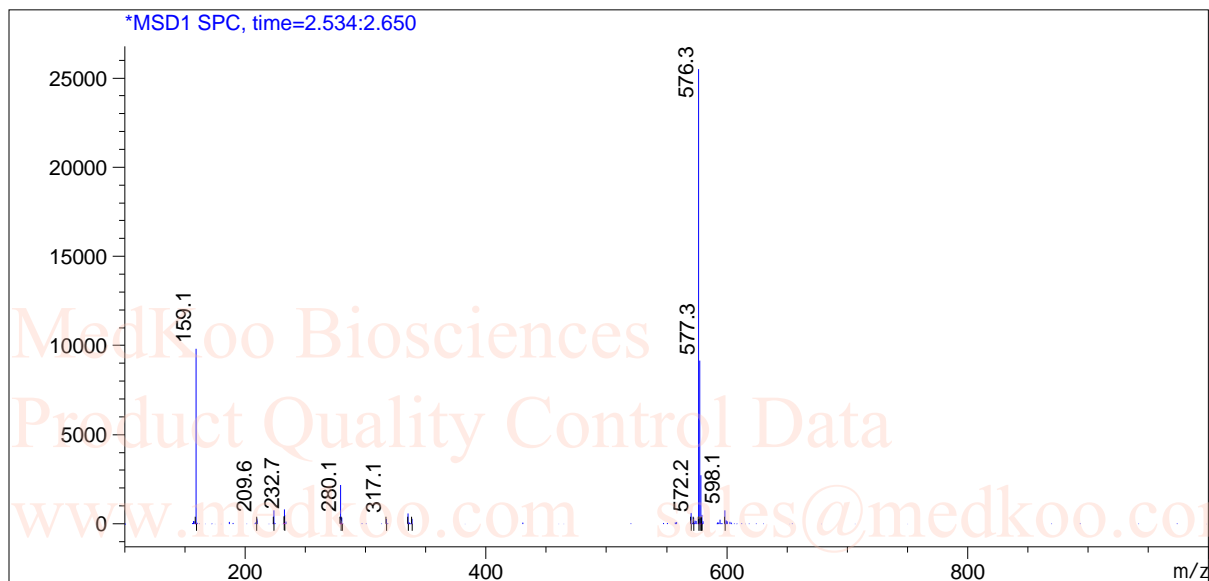
Chemical Formula: C₂₀H₂₅N₅O₆S

Exact Mass: 463.15255

Molecular Weight: 463.51



Precursor of Pelitrexol MS analysis



Chemical Formula: C₂₈H₄₁N₅O₆S

Exact Mass: 575.2778

Molecular Weight: 575.7250

Elemental Analysis: C, 58.41; H, 7.18; N, 12.16; O, 16.67; S, 5.57

Note. we did not observe parent ion peak for Pelitrexol.

MedKoo Biosciences

Product Quality Control Data

www.medkoo.com sales@medkoo.com