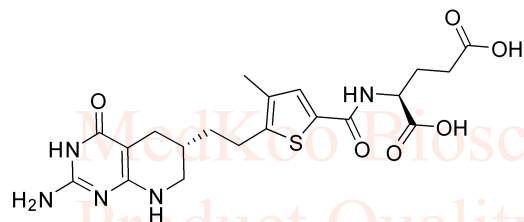


Pelitrexol HNMR Analysis, Solvent: DMSO

MedKoo Biosciences

Product Quality Control Data

www.medkoo.com sales@medkoo.com



MedKoo Cat#: 202200

Name: Pelitrexol

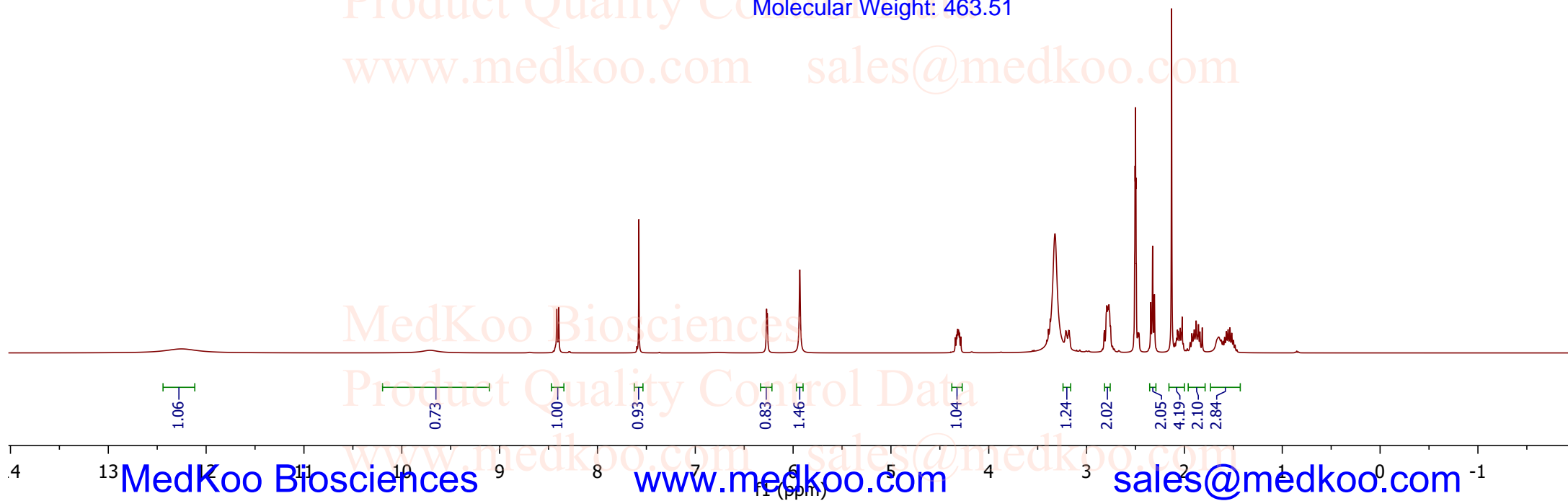
CAS#: 446022-33-9

Lot#: YXM201130

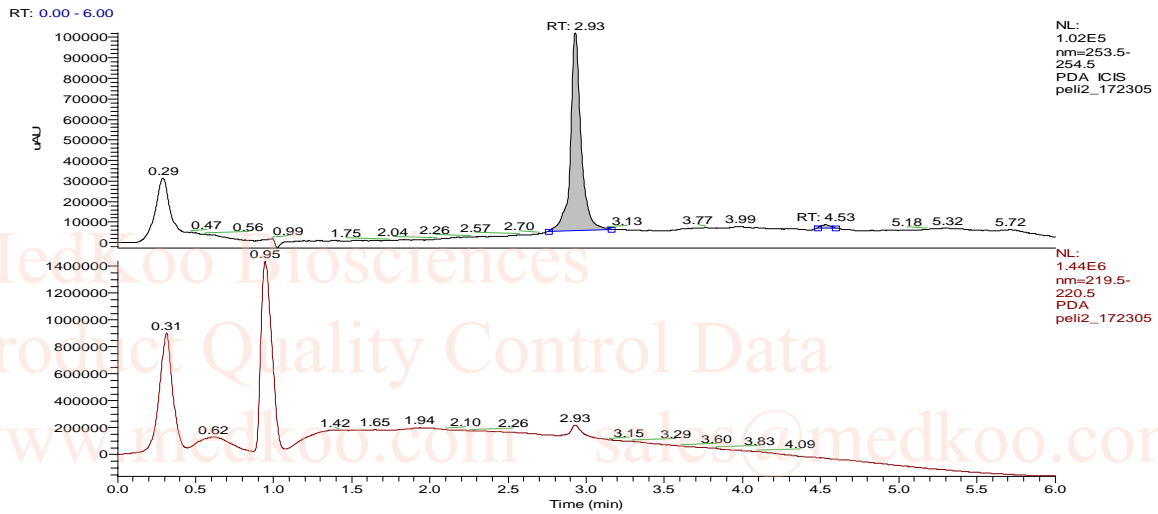
Chemical Formula: C₂₀H₂₅N₅O₆S

Exact Mass: 463.15255

Molecular Weight: 463.51



Pelitrexol HPLC Analysis



PEAK

LIST

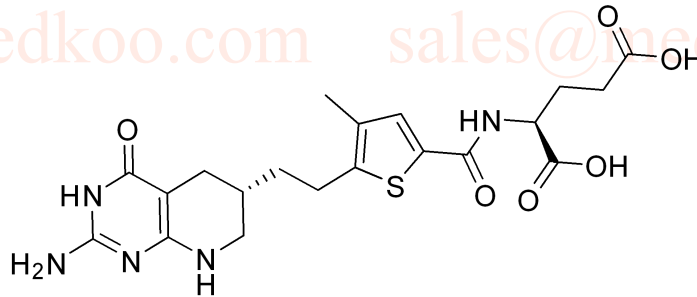
peIi2_172305.RAW

RT: 0.00 - 6.00

Number of detected peaks: 2

Apex

RT	Start RT	End RT	Height	%Height	Area	%Area
2.93	2.76	3.16	96087.03	98.4	446886.1	98.49
4.53	4.48	4.59	1559.625	1.6	6872.04	1.51



MedKoo Cat#: 202200

Name: Pelitrexol

CAS#: 446022-33-9

Lot#: YXM201130

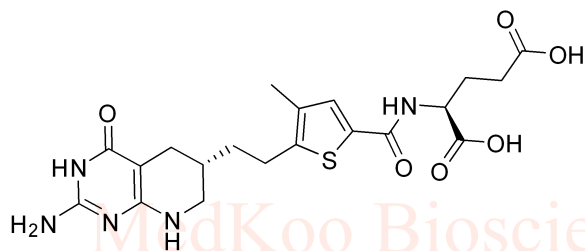
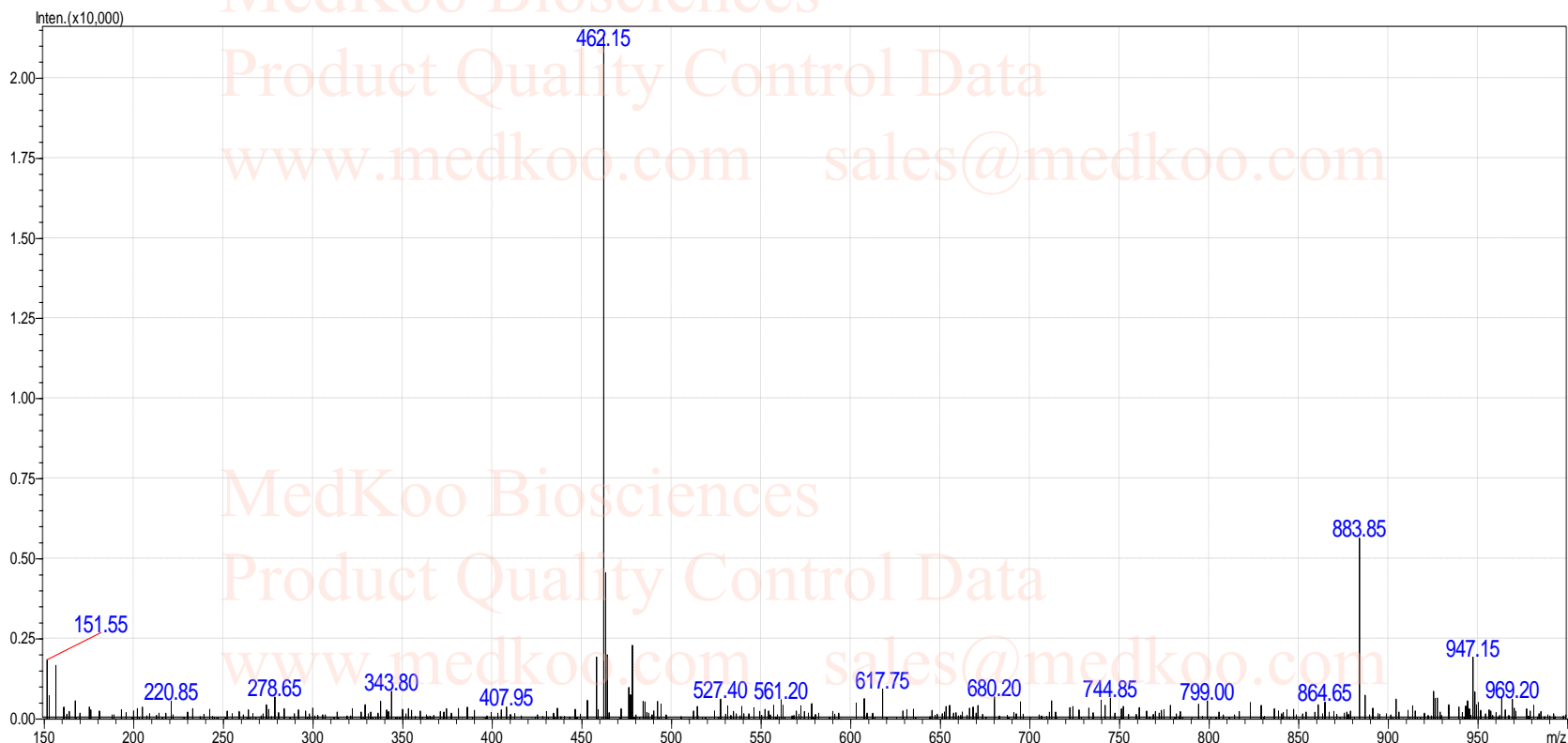
Chemical Formula: C₂₀H₂₅N₅O₆S

Exact Mass: 463.15255

Molecular Weight: 463.51

Pelitrexol MS Analysis

Pelitrexol, MS [M-1]⁺:



MedKoo Cat#: 202200

Name: Pelitrexol

CAS#: 446022-33-9

Lot#: YXM201130

Chemical Formula: C₂₀H₂₅N₅O₆S

Exact Mass: 463.15255

Molecular Weight: 463.51