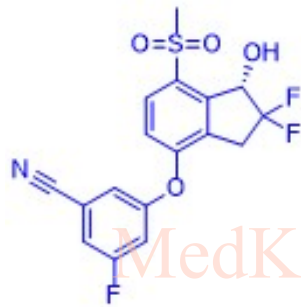


PT2385 HNMR Analysis, Solvent:CDCl3

MedKoo Biosciences

Product Quality Control Data

www.medkoo.com sales@medkoo.com



MedKoo Cat#: 206541

Name: PT2385

CAS#: 1672665-49-4

LOT#: C21R06B07

Chemical Formula:

C₁₇H₁₂F₃NO₄S

Exact Mass: 383.0439

Molecular Weight: 383.34

MedKoo Biosciences

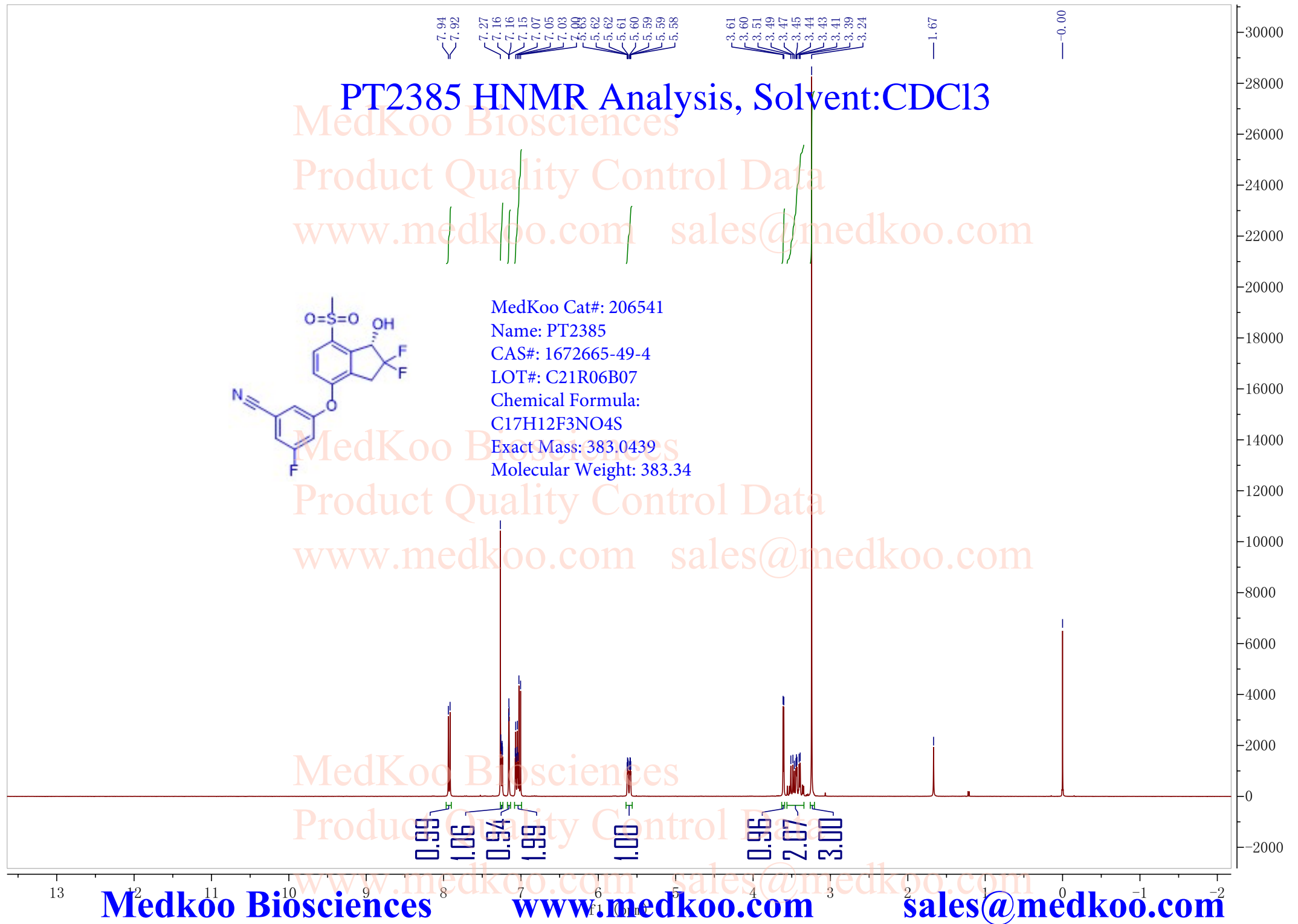
Product Quality Control Data

www.medkoo.com sales@medkoo.com

MedKoo Biosciences

Product Quality Control Data

www.medkoo.com sales@medkoo.com



Medkoo Biosciences

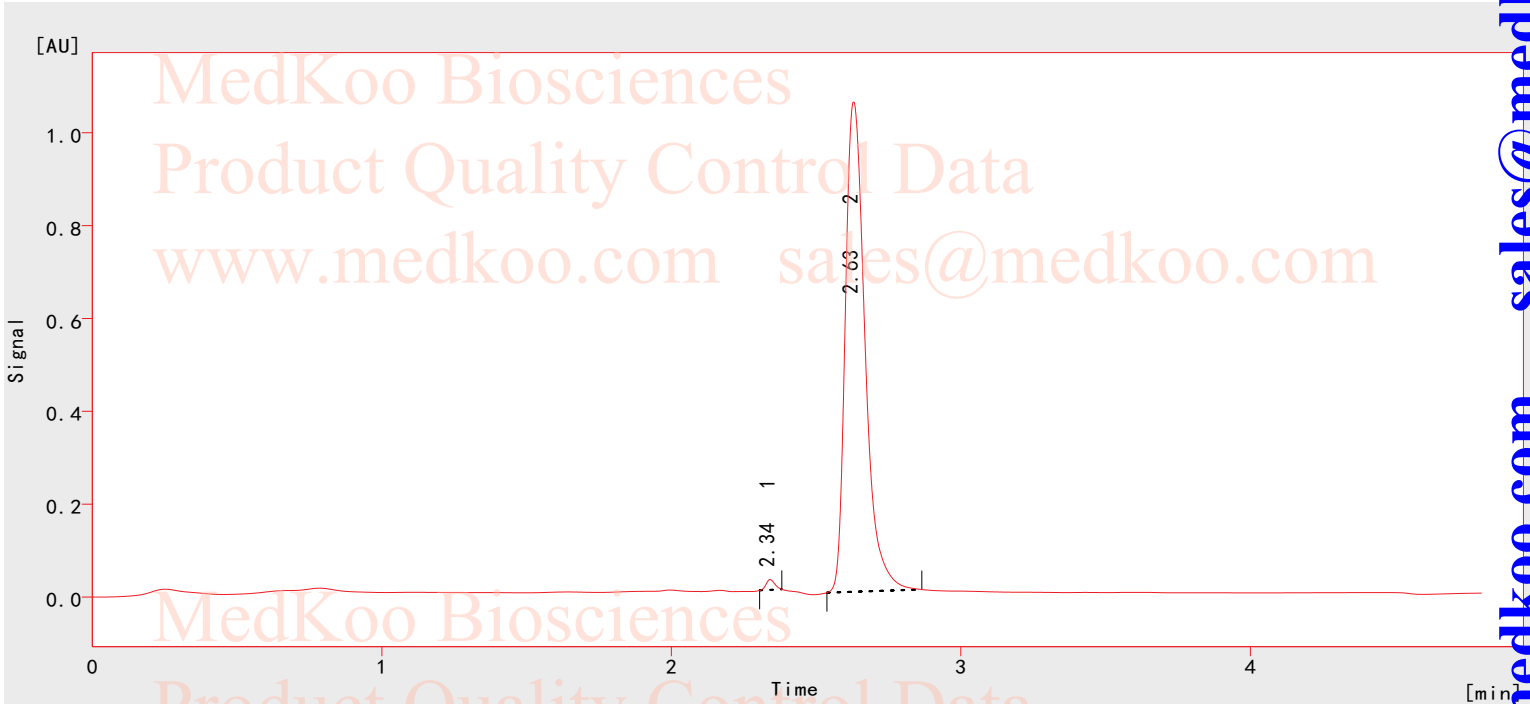
www.medkoo.com

sales@medkoo.com

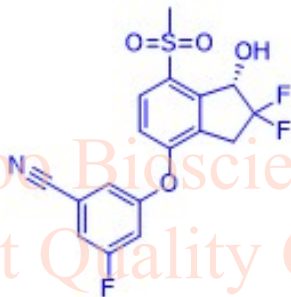
PT2385 HPLC Analysis

Chromatogram Information:

File Name : D:\CZC\6.PRM
Project : D:\W3200\DataFiles\Projects\Work1.PRJ
Method : 90B10



	Ret. Time [min]	Area [mAU. s]	Height [mAU]	Area [%]
1	2.340	46.262	22.231	0.9
2	2.628	5003.689	1054.708	99.1
	Total	5049.952	1076.939	100.0



MedKoo Cat#: 206541
Name: PT2385
CAS#: 1672665-49-4
LOT#: C21R06B07
Chemical Formula: C17H12F3NO4S
Exact Mass: 383.0439
Molecular Weight: 383.34

www.medkoo.com sales@medkoo.com

Medkoo Biosciences www.medkoo.com sales@medkoo.com