

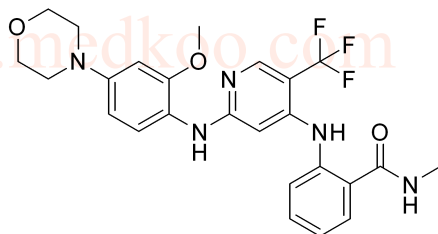
PND-1186 HNMR Analysis, Solvent = DMSO

10.147
8.633
8.622
8.314
8.162
7.691
7.672
7.491
7.471
7.454
7.441
7.079
7.062
7.046
6.616
6.611
6.554
6.470
6.465
6.448
6.443
3.797
3.751
3.741
3.730
3.321
3.095
3.085
2.767
2.756
2.508

0.007
-0.067



Product Quality Control Data
www.medkoo.com sales@medkoo.com



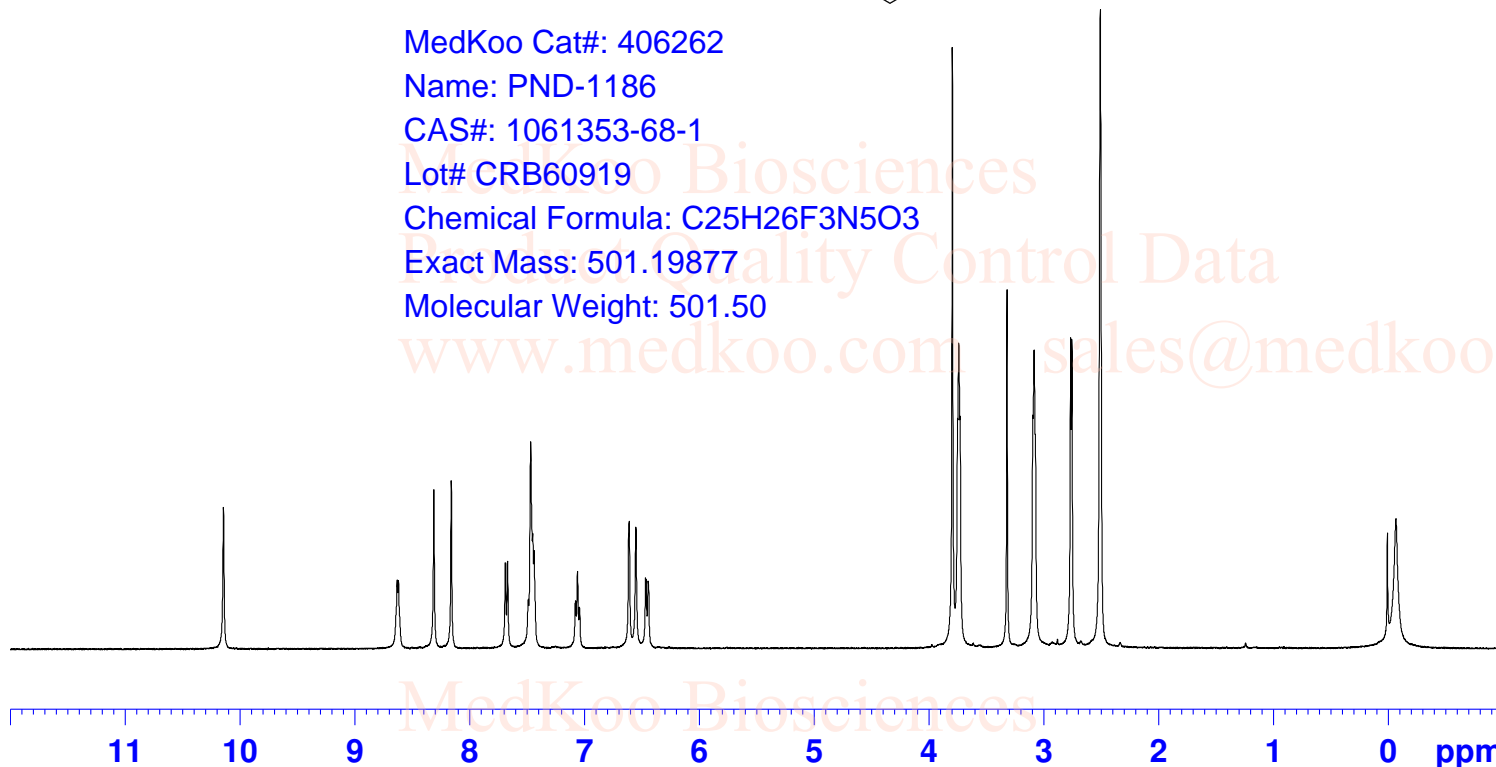
```

NAME      PND-1186
EXPNO     1
PROCNO    1
INSTRUM   spect
PROBHD    5 mm PABBO
PULPROG   BB-zg30
TD        65536
SOLVENT   DMSO
NS        16
DS        0
SWH       8223.685 Hz
FIDRES    0.125483 Hz
AQ        3.9846387 sec
RG        144
DW        60.800 usec
DE        6.50 usec
TE        298.7 K
D1        1.00000000 sec
TD0       1
    
```

MedKoo Cat#: 406262
Name: PND-1186
CAS#: 1061353-68-1
Lot# CRB60919
Chemical Formula: C₂₅H₂₆F₃N₅O₃
Exact Mass: 501.19877
Molecular Weight: 501.50

```

===== CHANNEL f1 =====
NUC1      1H
P1        10.85 usec
PL1       -4.00 dB
PL1W      20.19063568 W
SFO1      400.1324710 MHz
SI        32768
SF        400.1300000 MHz
WDW       EM
SSB       0
LB        0.30 Hz
GB        0
PC        1.00
    
```

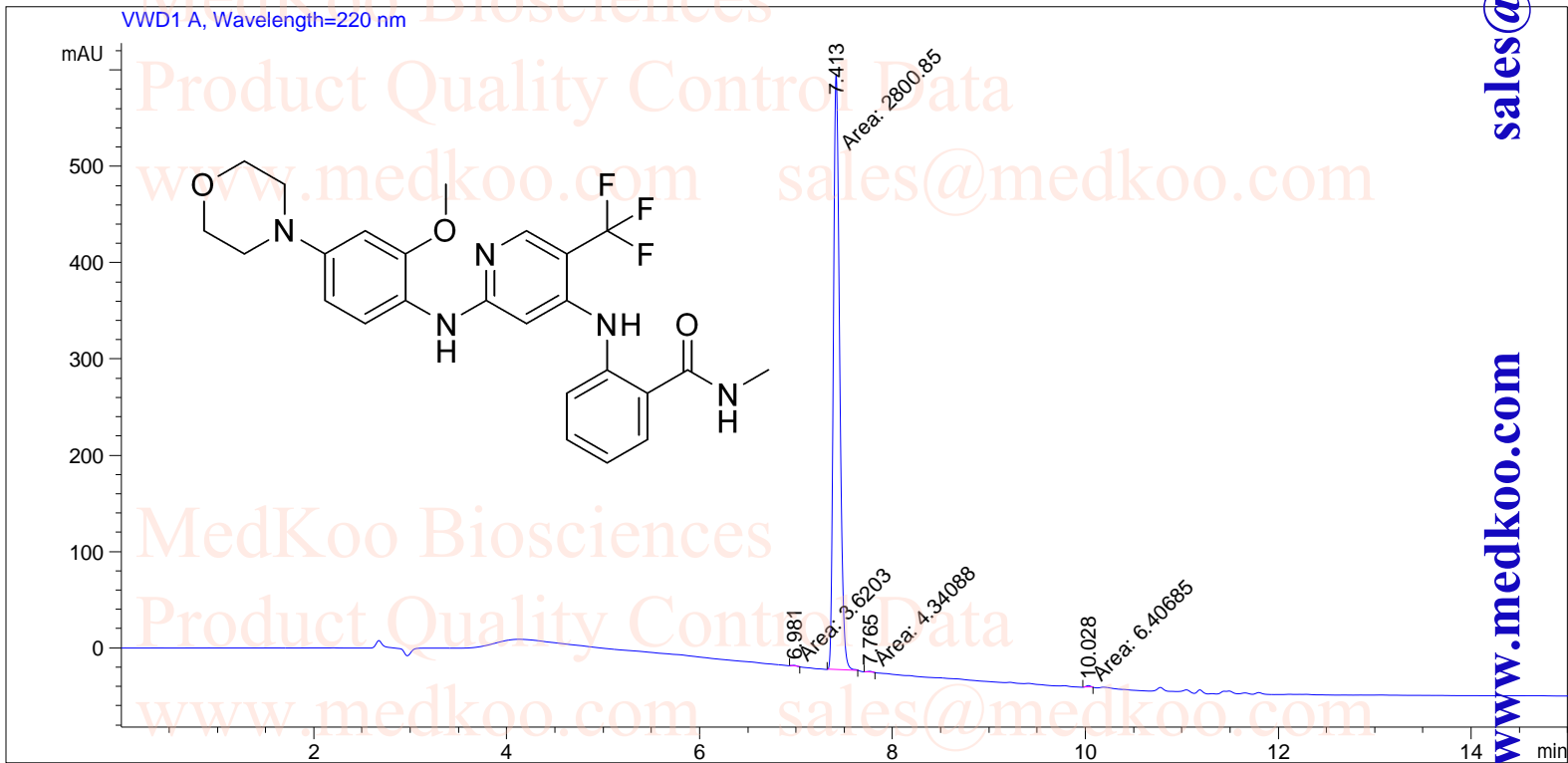


1.03
1.04
1.02
1.04
1.11
2.97
1.05
2.03
1.04
2.96
3.79
3.99
3.00

PND-1186 HPLC Analysis

```

=====
Acq. Operator   : System                      Seq. Line :    1
Acq. Instrument : LC1260                     Location  : Vial 42
                                                Inj       :    1
                                                Inj Volume: 0 µl
Different Inj Volume from Sequence !      Actual Inj Volume : 3 µl
Acq. Method    : E:\DATA\YZJ\Data\10-90 AD 220 15MIN.M
Analysis Method : D:\PUBLIC\DEF_LC\CHENYUAN-1.D\DA.M (5-95 6MIN.M)
    
```



Area Percent Report

```

=====
Sorted By      : Signal
Multiplier     : 1.0000
Dilution      : 1.0000
Use Multiplier & Dilution Factor with ISTDs
Signal 1: VWD1 A, Wavelength=220 nm
    
```

```

MedKoo Cat#: 406262
Name: PND-1186
CAS#: 1061353-68-1
Lot# CRB60919
Chemical Formula: C25H26F3N5O3
Exact Mass: 501.19877
Molecular Weight: 501.50
    
```

Peak #	RetTime [min]	Type	Width [min]	Area [mAU*s]	Height [mAU]	Area %
1	6.981	MM	0.0594	3.62030	1.01549	0.1286
2	7.413	MM	0.0753	2800.84644	619.72504	99.4896
3	7.765	MM	0.0644	4.34088	1.12343	0.1542
4	10.028	MM	0.0587	6.40685	1.82019	0.2276
Totals :				2815.21446	623.68414	

