

—13.

—11.24

8.02
8.02
7.62
7.42
7.41
7.40
7.40
7.21
7.18
7.17
6.64
6.40
6.38

4.33
4.31
3.91
3.80

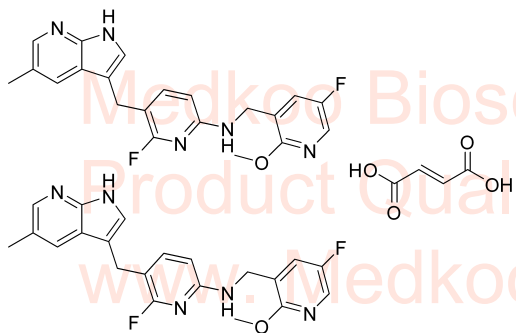
2.51
2.51
2.51
2.33

PLX5622 hemifumarate HNMR Analysis, Solvent:DMSO

Medkoo Biosciences

Product Quality Control Data

www.Medkoo.com sales@medkoo.com



MedKo Cat#: 555654

Name: PLX5622 hemifumarate

CAS#: PLX5622 hemifumarate

Lot#: T21D01P21

Chemical Formula: C₄₆H₄₂F₄N₁₀O₆

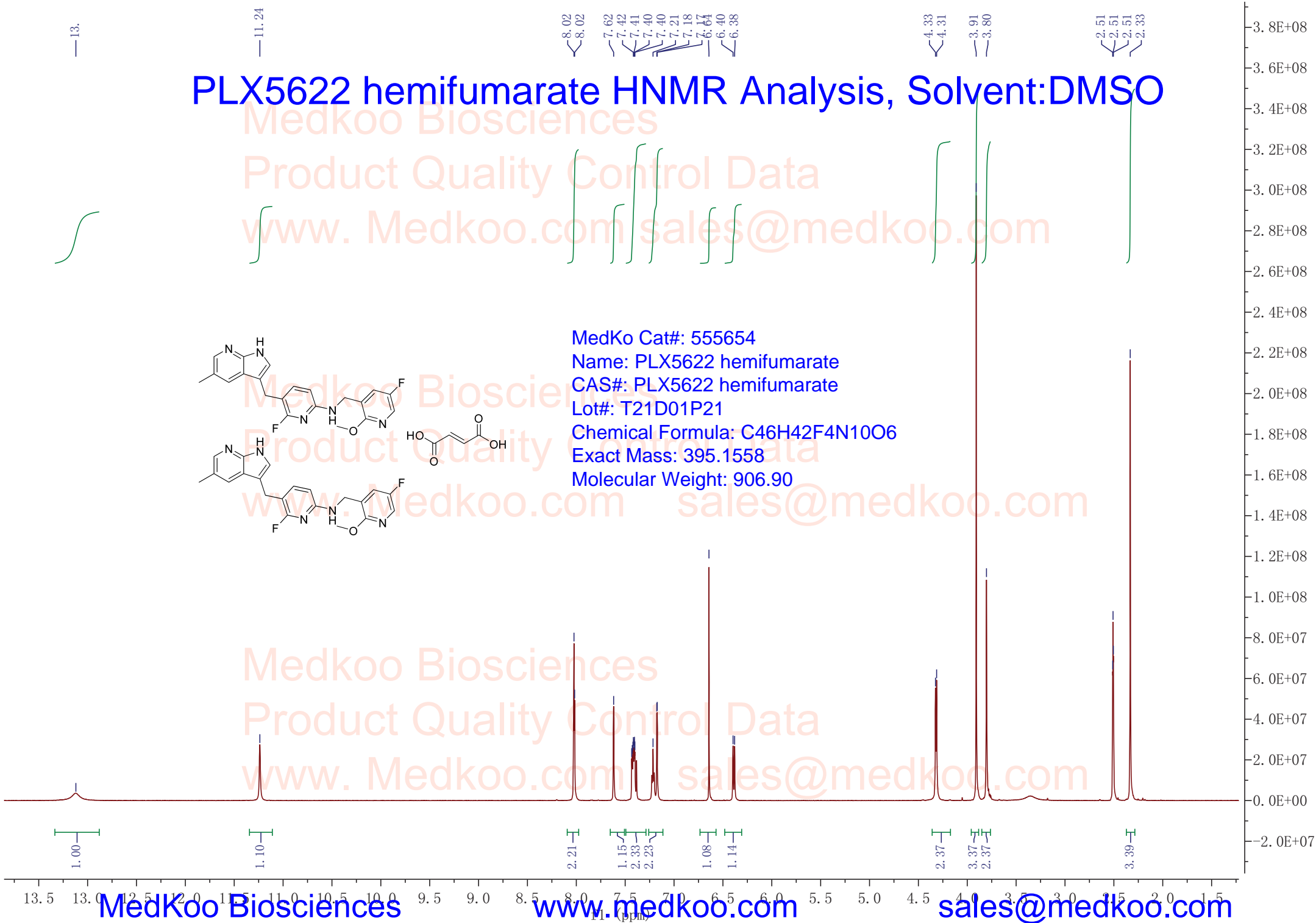
Exact Mass: 395.1558

Molecular Weight: 906.90

Medkoo Biosciences

Product Quality Control Data

www.Medkoo.com sales@medkoo.com



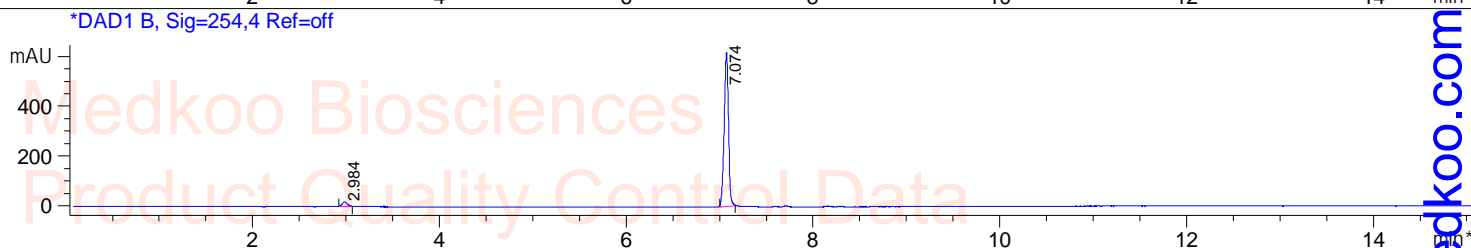
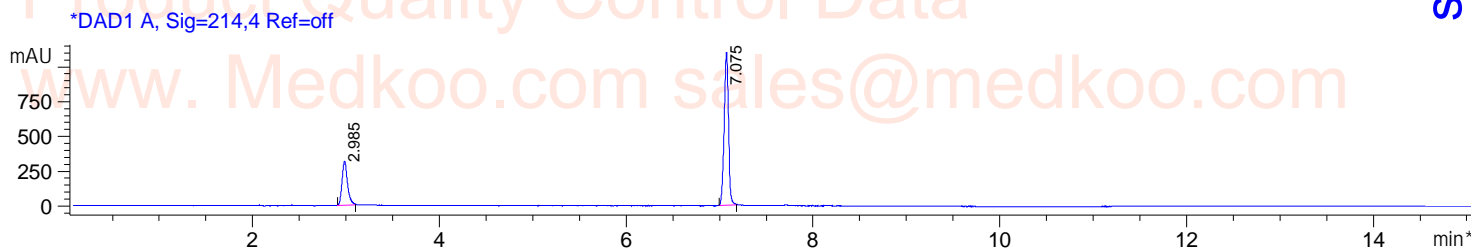
MedKoo Biosciences

www.Medkoo.com

sales@medkoo.com

PLX5622 hemifumarate HPLC Analysis

Sample Name : PLX5622fumarate **Tgt Mass(EZX)** :
Acq. Operator : **Location** : P2-D-05
Spec. Reported : MS Integration **Inj** : 1
Acq. Method : D:\METHODS\1-POS-15MIN.M **Inj Volume** : 1 ul
Analysis Method : D:\METHODS\1-POS-15MIN.M
Sample Info : Easy-Access Method: '1-POS-15MIN.M'
Method Info : Mobile Phase: A: water(0.01%TFA) B: ACN(0.01%TFA)
Gradient: 5%B increase to 95%B within 8.0 min, 95%B for 7.0 min.
Flow Rate: 1.0ml/min
Column: Luna C18(2) 100A,5um,4.6*150mm
Column Temperature: 40 C
Detection: UV(214,4nm) and MS(ESI,Pos mode,110 to 1500 amu)

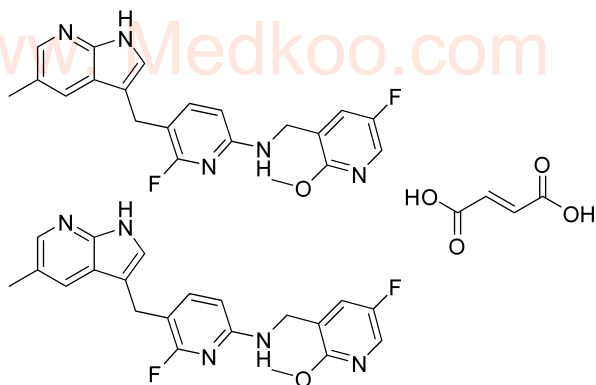


Integration Results for DAD1 A, Sig=214,4 Ref=off

RetTim	Width	Area	Height	Area%
2.98	0.06	1275.48	314.54	26.43
7.07	0.05	3549.86	1101.11	73.57

Integration Results for DAD1 B, Sig=254,4 Ref=off

RetTim	Width	Area	Height	Area%
2.98	0.05	67.95	18.01	3.31
7.07	0.05	1981.78	617.20	96.69

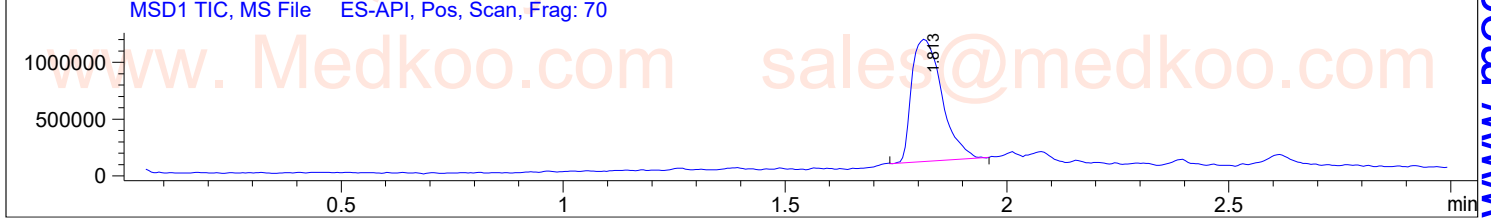
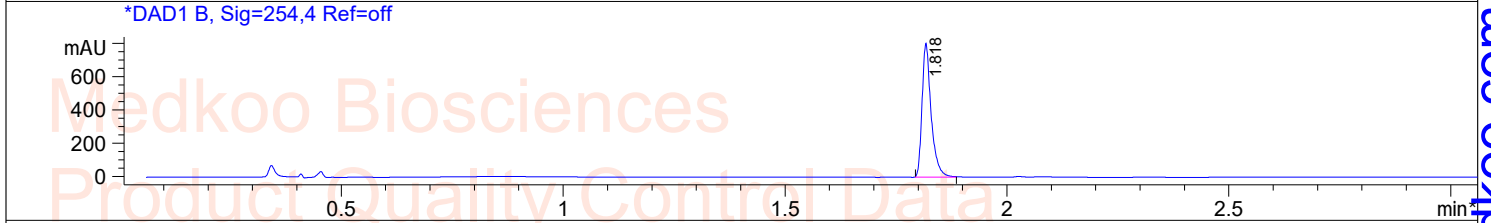
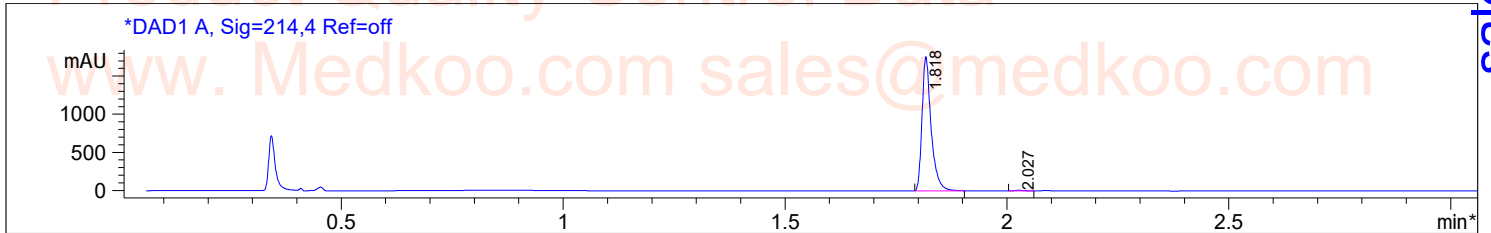


MedKoo Cat#: 555654
Name: PLX5622 hemifumarate
CAS#: PLX5622 hemifumarate
Lot#: T21D01P21
Chemical Formula: C₄₆H₄₂F₄N₁₀O₆
Exact Mass: 395.1558
Molecular Weight: 906.90

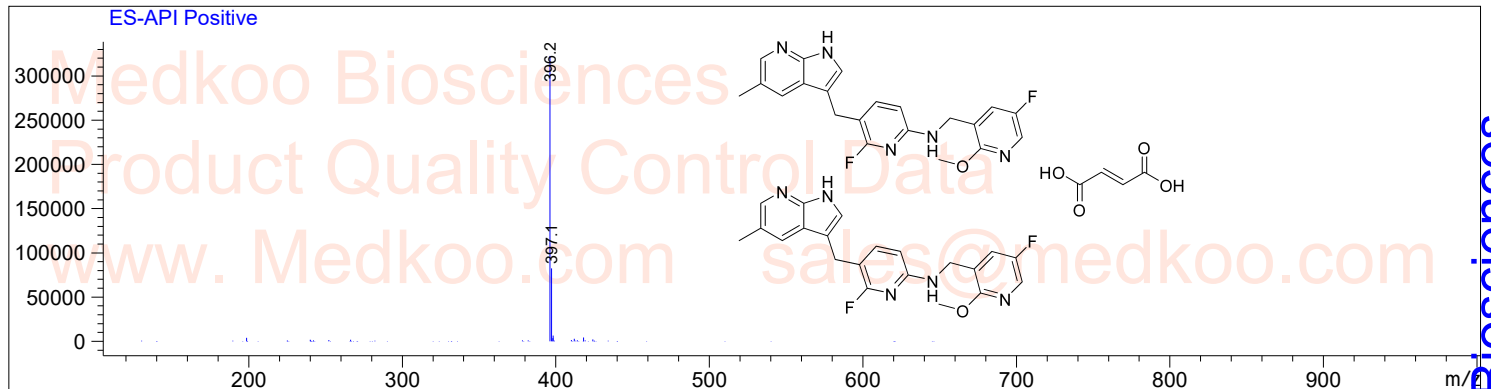
PLX5622 hemifumarate LC/MS Analysis

Sample Name : PLX5622 fumarate
Acq. Operator :
Spec. Reported : MS Integration
Acq. Method : C:\CHEM32\1\METHODS\1-POS-3MIN.M
Analysis Method : C:\CHEM32\1\METHODS\1-POS-3MIN.M
Sample Info : Easy-Access Method: '1-POS-3MIN'
Method Info : Mobile Phase: A:Water(10mM NH4HCO3) B:ACN
Gradient: 5%B increase to 95%B within 1.3min,95%B for 1.7min
Flow Rate: 1.8 ml/min
Column:Xbridge C18,3.5um,4.6*50mm
Column Temperature:45C
Detection:UV(214,4nm) and MS(ESI,Pos mode,110 to 1000 amu)

Tgt Mass(EZX) :
Location : P2-F-06
Inj : 1
Inj Volume : 1 ul



Ret. Time: 1.81 <<<< POSITIVE SPECTRA >>>>



MedKoo Cat#: 555654
Name: PLX5622 hemifumarate
CAS#: PLX5622 hemifumarate
Lot#: T21D01P21
Chemical Formula: C46H42F4N10O6
Exact Mass: 395.1558
Molecular Weight: 906.90