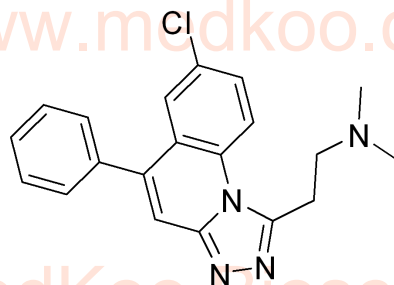


PF-9366 HNMR Analysis, Solvent: DMSO



7.888
7.872
7.866
7.656
7.638
7.633
7.629
7.617
7.613
7.599
7.589
7.585
7.577
7.571
7.566
7.562
7.555
7.551
7.546
7.543
3.654
3.636
3.617
3.346
2.958
2.939
2.921
2.518
2.514
2.510
2.505
2.501
2.324
2.185
— 0.005



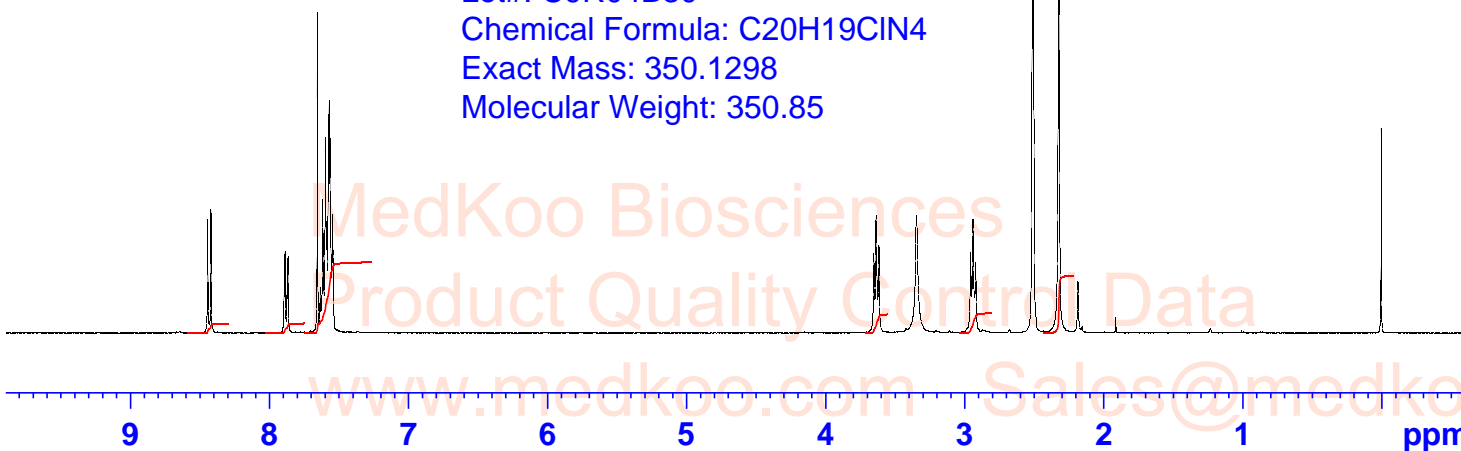
MedKoo Cat#: 526342
Name: PF-9366
CAS#: 72882-78-1
Lot#: C9R04B30
Chemical Formula: C₂₀H₁₉ClN₄
Exact Mass: 350.1298
Molecular Weight: 350.85

Current Data Parameters
NAME PF-9366
EXPNO 1
PROCNO 1

Time 12.29
INSTRUM spect
PROBHD 5 mm PADUL 13C
PULPROG zg30
TD 65536
SOLVENT DMSO
NS 16
DS 2
SWH 8012.820 Hz
FIDRES 0.122266 Hz
AQ 4.0894465 sec
RG 199.46
DW 62.400 usec
DE 6.50 usec
TE 294.6 K
D1 1.0000000 sec
TD0 1

==== CHANNEL f1 =====
SFO1 400.1324710 MHz
NUC1 1H
P1 10.00 usec
PLW1 20.0000000 W

F2 - Processing parameters
SI 65536
SF 400.1300000 MHz
WDW EM
SSB 0
LB 0.30 Hz
GB 0
PC 1.00



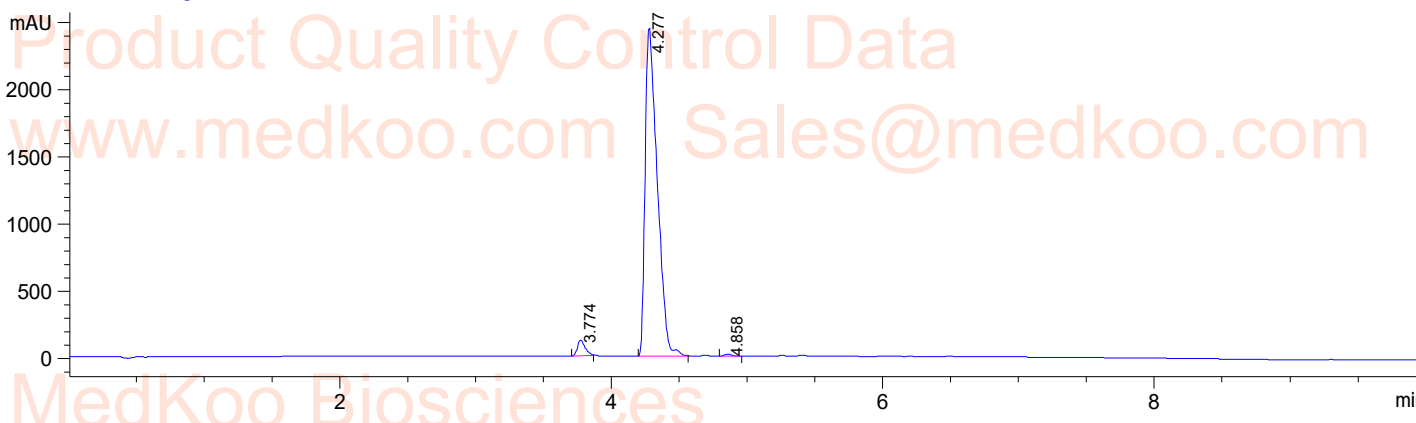
1.00
1.06
7.50
2.00
2.15
6.10

PF-9366 HPLC Analysis

Sample Name : PF9396
Acq. Operator : 1
Spec. Reported : Integration

Tgt Mass(EZX) :
Location : Vial 40
Inj : 0
Inj Volume : 7 ul

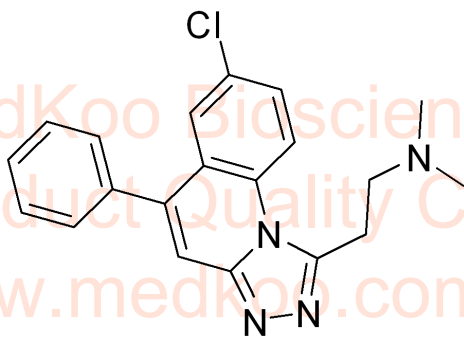
MedKoo Biosciences



Product Quality Control Data
www.medkoo.com Sales@medkoo.com

Integration Results for DAD1 A, Sig=214,4 Ref=off

| RetTim | Width | Area | Height | Area% |
|--------|-------|----------|---------|-------|
| 3.77 | 0.07 | 462.60 | 115.69 | 2.96 |
| 4.28 | 0.10 | 15129.66 | 2443.16 | 96.66 |
| 4.86 | 0.05 | 60.12 | 16.70 | 0.38 |



MedKoo Cat#: 526342
Name: PF-9366
CAS#: 72882-78-1
Lot#: C9R04B30
Chemical Formula: C₂₀H₁₉ClN₄
Exact Mass: 350.1298
Molecular Weight: 350.85

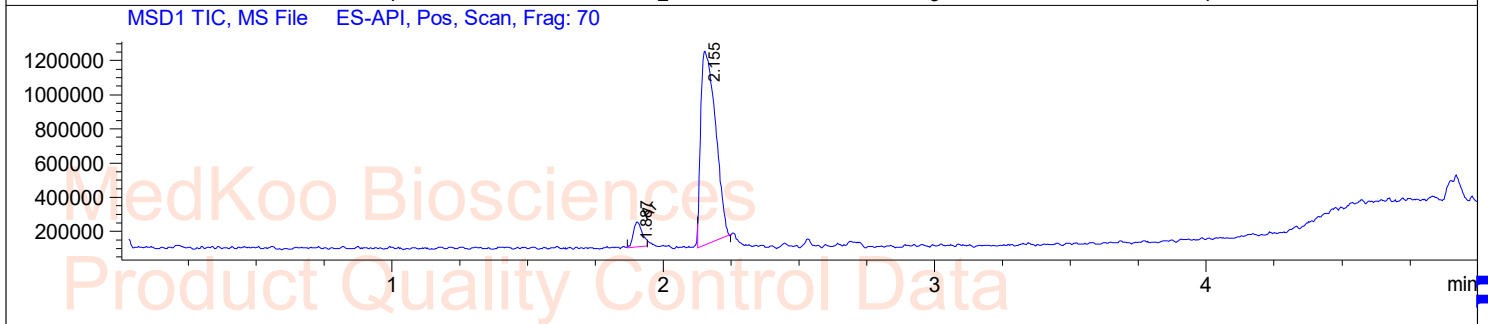
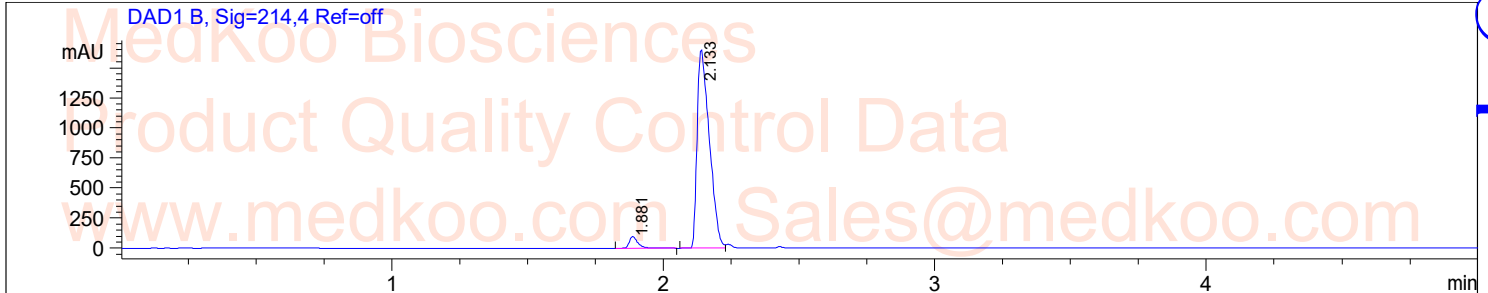
MedKoo Biosciences
Product Quality Control Data
www.medkoo.com Sales@medkoo.com

sales@medkoo.com
www.medkoo.com
MedKoo Biosciences

PF-9366 LC/MS Analysis

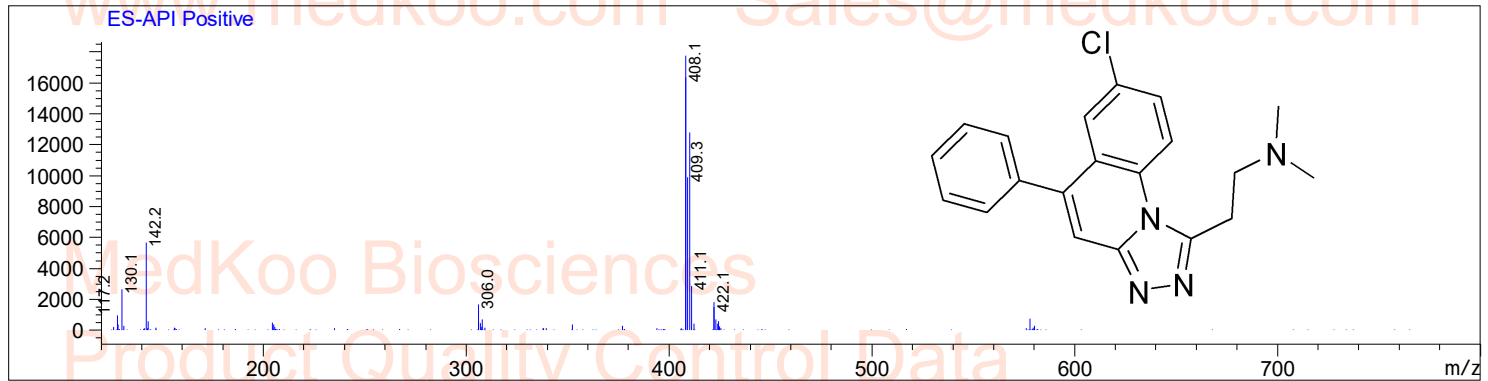
Sample Name : PF9396
Acq. Operator : D
Spec. Reported : MS Integration

Tgt Mass(EZX) :
Location : Vial 44
Inj : 1
Inj Volume : 5 ul



Ret. Time: 1.89

<<<< POSITIVE SPECTRA >>>>



Ret. Time: 2.16

