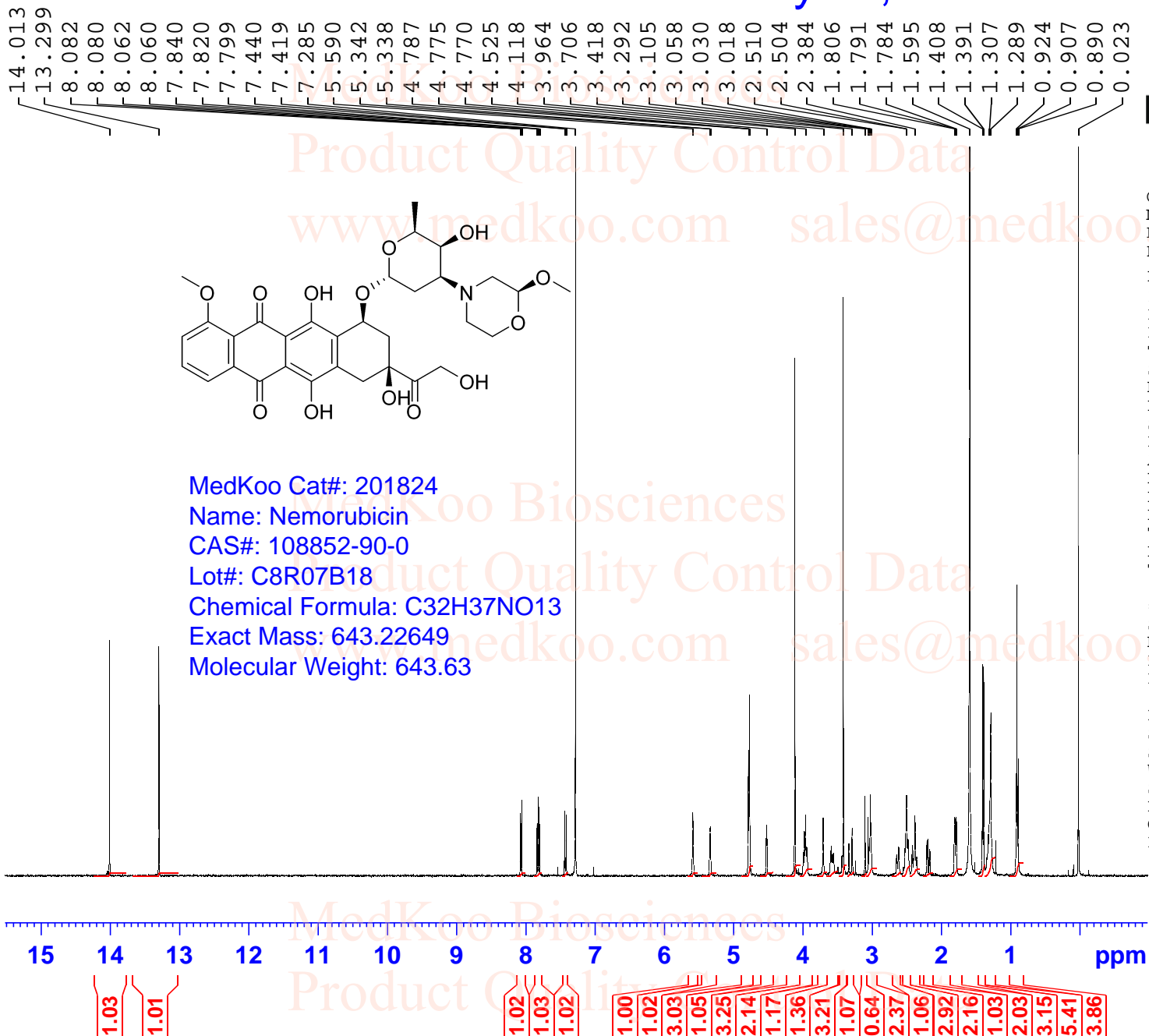


Nemorubicin HNMR Analysis, Solvent = CDCl₃



Current Data Parameters
 NAME 108852-90-0
 EXPNO 1
 PROCNO 1

F2 - Acquisition Parameters
 INSTRUM spect
 PROBHD 5 mm PADUL 13C
 PULPROG zg30
 TD 65536
 SOLVENT CDCl₃
 NS 16
 DS 2
 SWH 8012.820 Hz
 FIDRES 0.122266 Hz
 AQ 4.0894465 sec
 RG 199.46
 DW 62.400 usec
 DE 6.50 usec
 TE 298.4 K
 D1 1.00000000 sec
 TD0 1

==== CHANNEL f1 =====
 SF01 400.1324710 MHz
 NUC1 1H
 P1 10.00 usec
 PLW1 20.00000000 W

F2 - Processing parameters
 SI 65536
 SF 400.1300000 MHz
 WDW EM
 SSB 0
 LB 0.30 Hz
 GB 0
 PC 1.00

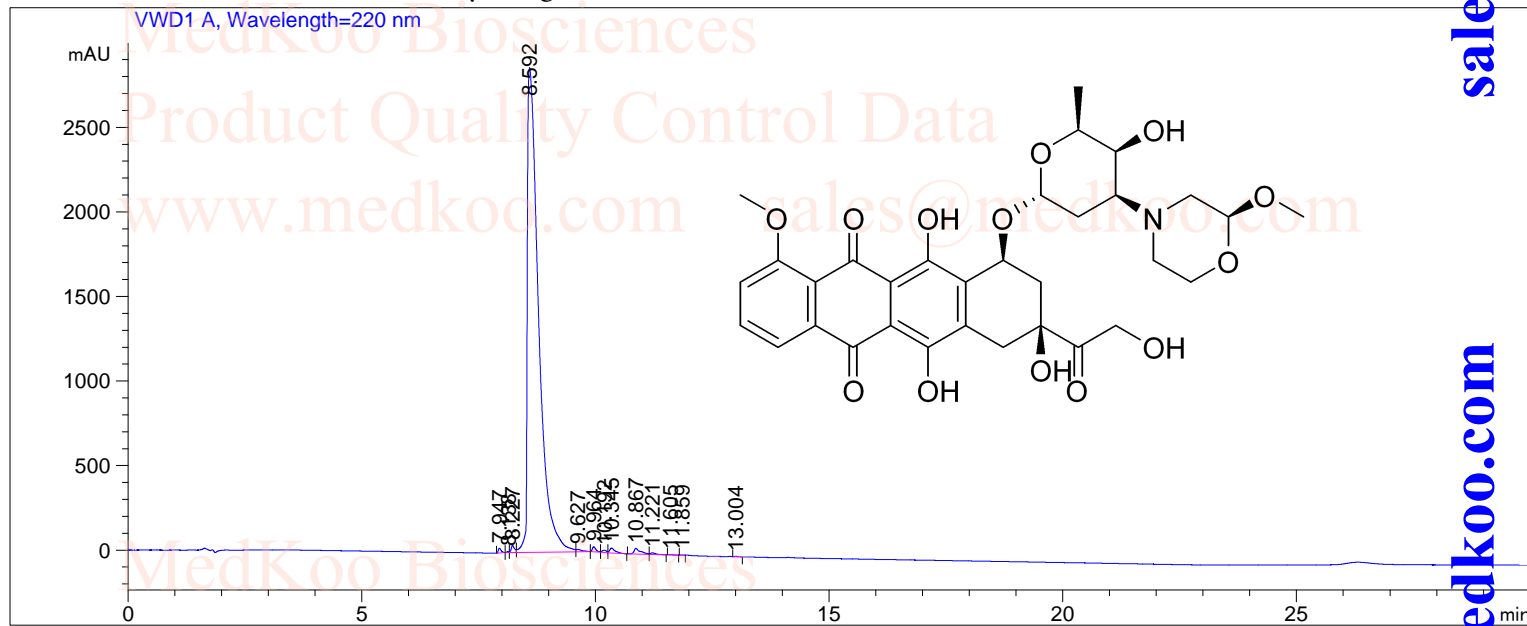
Nemorubicin HPLC Analysis

```

=====
User           :                               Seq. line :    1
Instrument     : HPLC-001                     Local       : Vial   41
Sample Name   : 108852-90-0                   Inj         :    1
                                                Inj Volume  : 10.000 µl
                                                Actual Inj volume : 2.000 µl

Different Inj Volume from sample entry

Acq. Method   : D:\CHEM32\1\DATA\NEM\NEM\NEM.M
Analysis Method : D:\CHEM32\1\METHODS\NEM-1.M
^Method       : NEM-1
Additional Info : Peaks manually integrated
    
```



Area Percent Report

```

Sorted By      : Signal
Multiplier    : 1.000
Dilution      : 1.000
    
```

Signal1: VWD1 A, Wavelength=220 nm

Peak #	Ret. Time [min]	Type	Width [min]	Area [mAU*s]	Height [mAU]	Area %
1	7.947	BB	0.0622	116.36582	28.07991	0.2363
2	8.138	BV	0.0520	23.08087	6.92197	0.0469
3	8.227	VV	0.0710	208.04906	42.48827	0.4226
4	8.592	VV	0.2474	4.78286e4	2861.92480	97.1426
5	9.627	VB	0.1285	128.83434	14.09212	0.2617
6	9.964	BV	0.0797	164.41887	30.81383	0.3339
7	10.192	VV	0.1002	92.54308	14.16882	0.1880
8	10.345	VB	0.1155	237.01926	29.28583	0.4814
9	10.867	BV	0.1312	334.89093	34.57200	0.6802
10	11.221	VB	0.1104	76.71203	9.85898	0.1558
11	11.605	BB	0.0836	10.37302	1.87223	0.0211
12	11.859	BB	0.0617	5.56506	1.46643	0.0113
13	13.004	BB	0.0856	9.00571	1.57630	0.0183

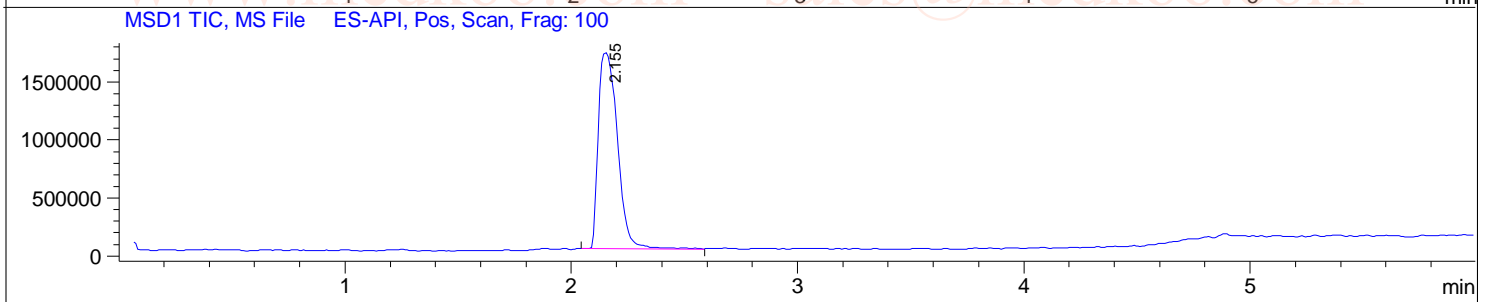
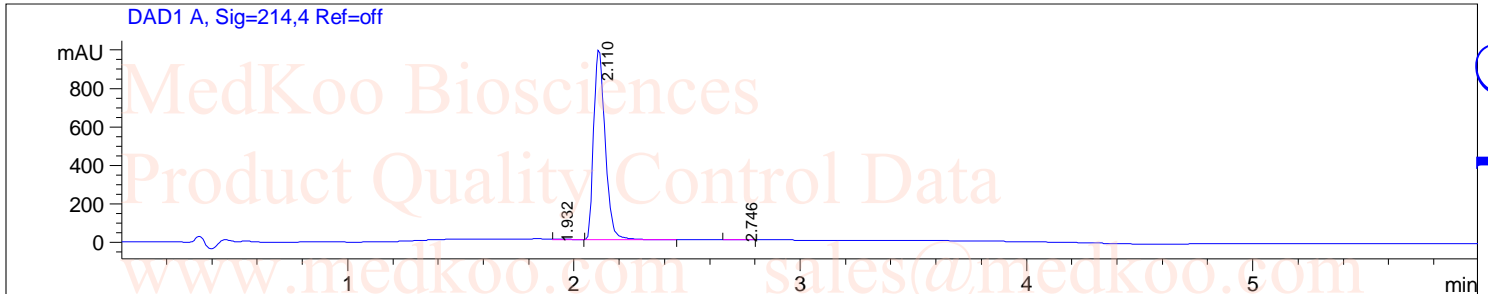
Total : 4.92355e4 3077.12150

MedKoo Cat#: 201824
 Name: Nemorubicin
 CAS#: 108852-90-0
 Lot#: C8R07B18
 Chemical Formula: C32H37NO13
 Exact Mass: 643.22649
 Molecular Weight: 643.63

Nemorubicin LC/MS Analysis

Sample Name : 108852-90-0
 Acq. Operator : D
 Spec. Reported : MS Integration

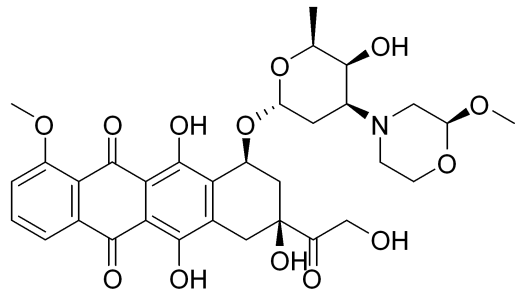
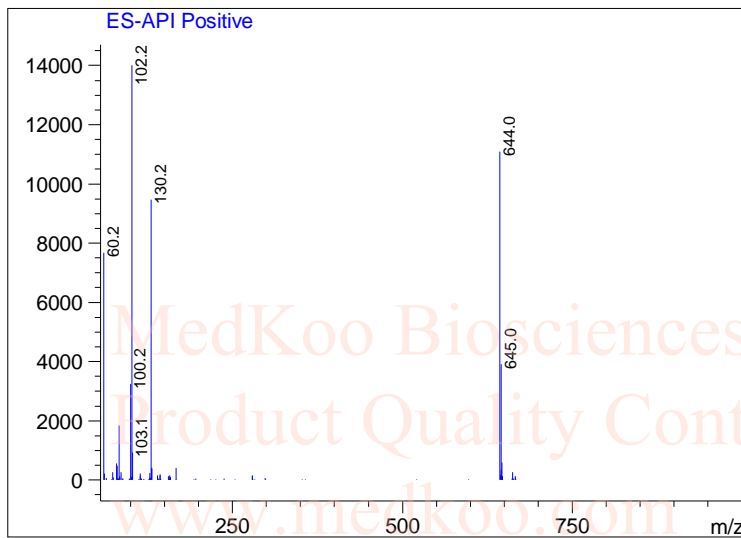
Tgt Mass(EZX) :
 Location : P2-B-08
 Inj : 1
 Inj Volume : 8 ul



Integration Results for DAD1 A, Sig=214,4 Ref=off

RetTim	Width	Area	Height	Area%
1.93	0.06	16.64	3.72	0.48
2.11	0.06	3481.29	988.09	99.38
2.75	0.06	5.14	1.26	0.15

Ret. Time: 2.16 <<<< POSITIVE SPECTRA >>>>



MedKoo Cat#: 201824
 Name: Nemorubicin
 CAS#: 108852-90-0
 Lot#: C8R07B18
 Chemical Formula: C32H37NO13
 Exact Mass: 643.22649
 Molecular Weight: 643.63