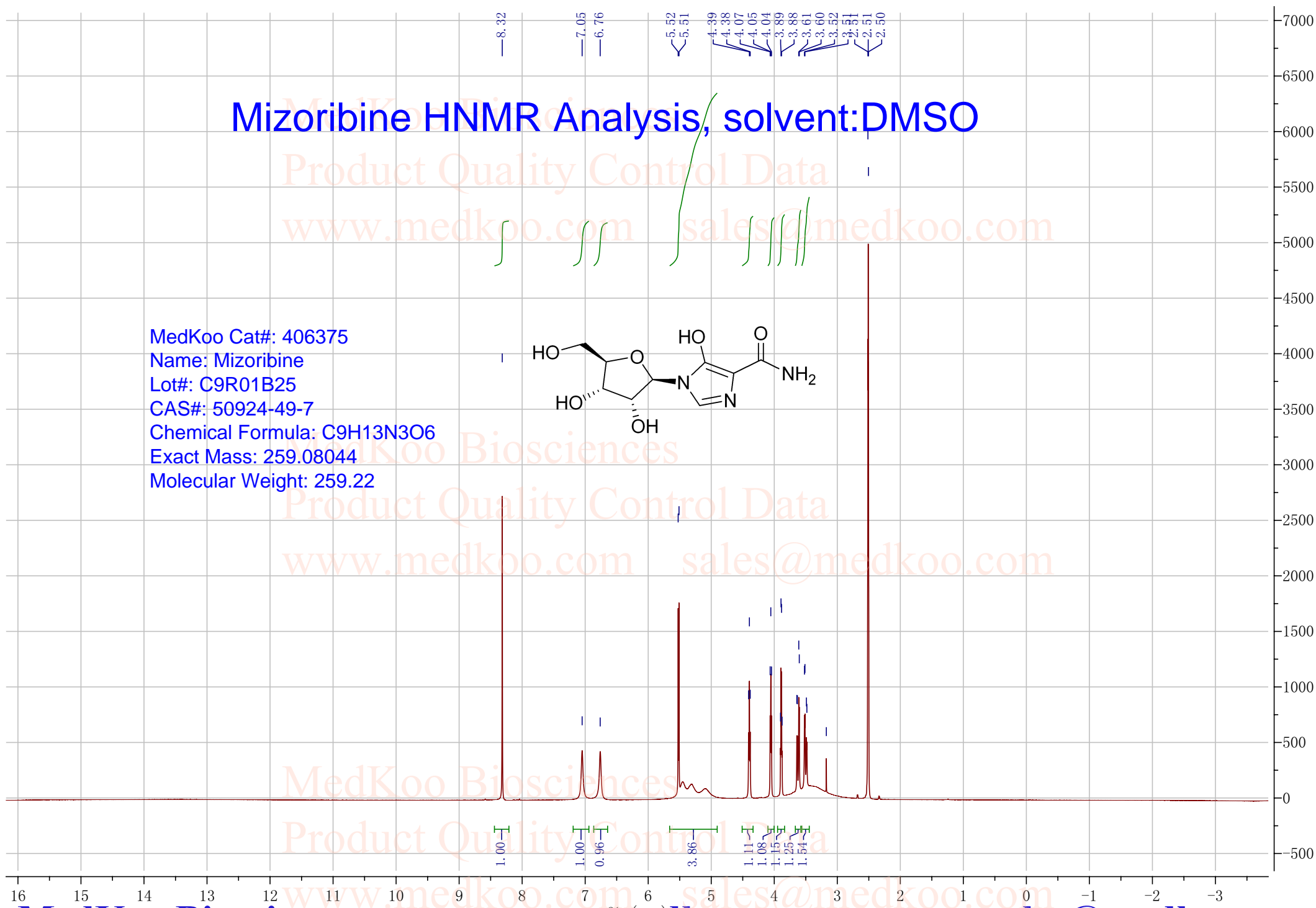
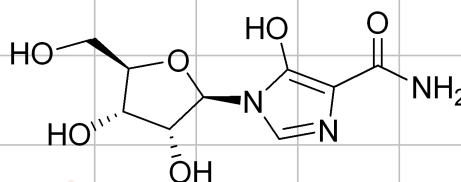


# Mizoribine HNMR Analysis, solvent:DMSO

Product Quality Control Data  
www.medkoo.com sales@medkoo.com

MedKoo Cat#: 406375  
Name: Mizoribine  
Lot#: C9R01B25  
CAS#: 50924-49-7  
Chemical Formula: C<sub>9</sub>H<sub>13</sub>N<sub>3</sub>O<sub>6</sub>  
Exact Mass: 259.08044  
Molecular Weight: 259.22

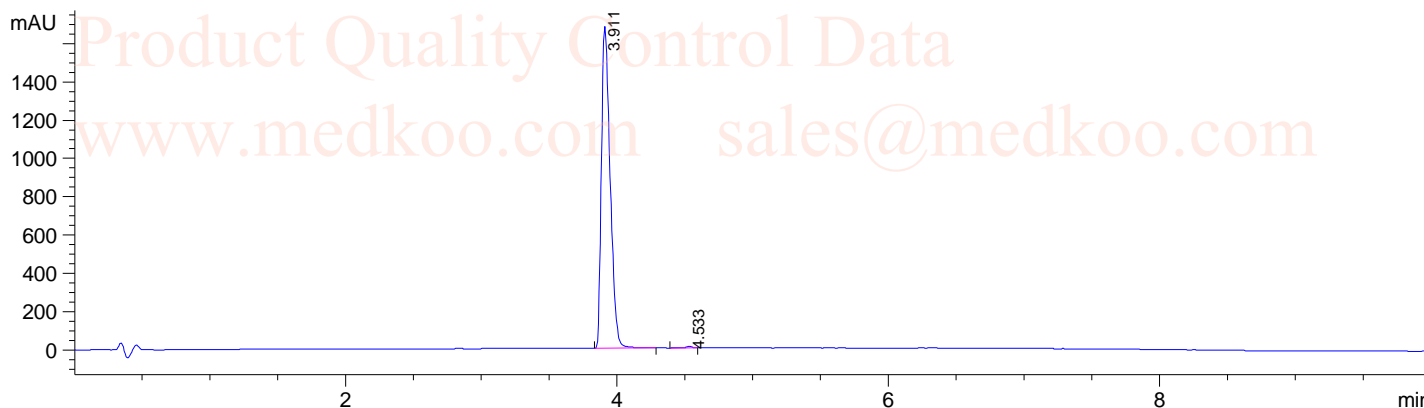


Product Quality Control Data  
www.medkoo.com sales@medkoo.com

Product Quality Control Data  
www.medkoo.com sales@medkoo.com

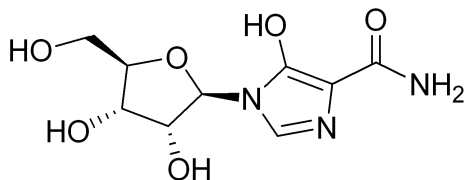
# Mizoribine HPLC Analysis

Sample Name : Mizoribine  
Acq. Operator : 1  
Spec. Reported : Integration  
Tgt Mass(EZX) :  
Location : P1-C-05  
Inj : 0  
Inj Volume : 7 ul



Integration Results for DAD1 A, Sig=254,4 Ref=off

RetTim	Width	Area	Height	Area%
3.91	0.07	7496.02	1679.32	99.65
4.53	0.05	26.32	8.47	0.35



MedKoo Cat#: 406375  
Name: Mizoribine  
Lot#: C9R01B25  
CAS#: 50924-49-7  
Chemical Formula: C<sub>9</sub>H<sub>13</sub>N<sub>3</sub>O<sub>6</sub>  
Exact Mass: 259.08044  
Molecular Weight: 259.22

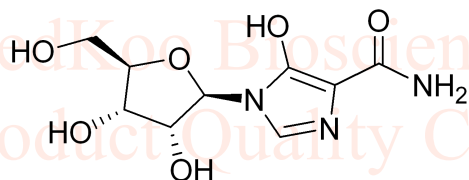
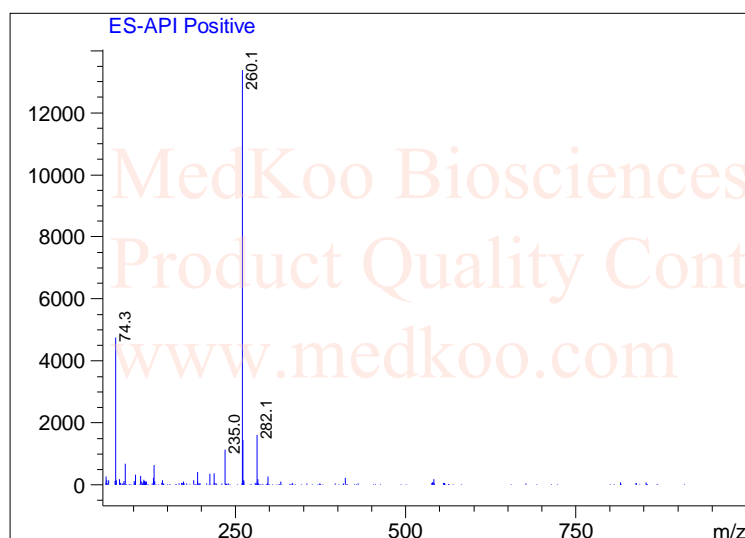
# Mizoribine LC/MS Analysis

Sample Name : Mizoribine  
Acq. Operator : D  
Spec. Reported : MS Integration

Tgt Mass(EZX) :  
Location : P2-C-03  
Inj : 1  
Inj Volume : 5 ul



Ret. Time: 3.60 <<<< POSITIVE SPECTRA >>>>



MedKoo Cat#: 406375  
Name: Mizoribine  
Lot#: C9R01B25  
CAS#: 50924-49-7  
Chemical Formula: C<sub>9</sub>H<sub>13</sub>N<sub>3</sub>O<sub>6</sub>  
Exact Mass: 259.08044  
Molecular Weight: 259.22