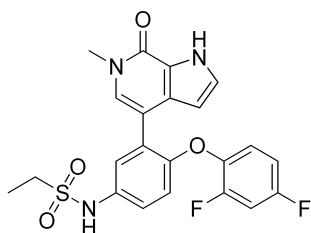


Mivebresib HNMR Analysis, Solvent = DMSO-d6

12.060
9.783
7.398
7.391
7.379
7.372
7.348
7.341
7.313
7.301
7.294
7.287
7.216
7.209
7.194
7.187
7.099
7.090
7.076
7.067
7.053
7.018
7.015
7.011
6.995
6.929
6.907
6.260
6.254
6.248
3.537
3.325
3.143
3.124
3.106
3.088
2.510
2.506

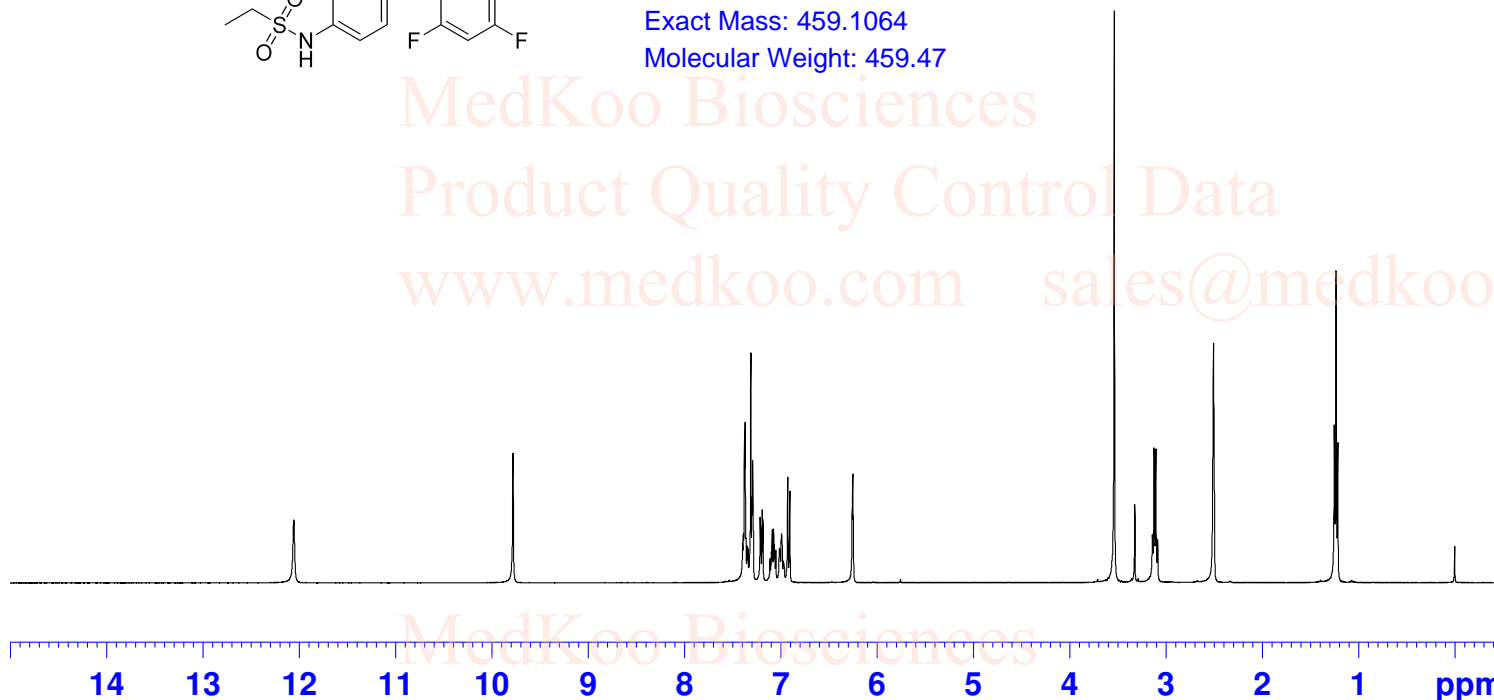


NAME ABBV-075
EXPNO 1
PROCNO 1
Time 22.06
INSTRUM spect
PROBHD 5 mm PABBO
PULPROG BB-zg30
TD 65536
SOLVENT DMSO
NS 14
DS 0
SWH 8223.685 Hz
FIDRES 0.125483 Hz
AQ 3.9846387 sec
RG 256
DW 60.800 usec
DE 6.50 usec
TE 297.6 K
D1 1.00000000 sec
TD0 1



MedKoo Cat#: 206520
Name: Mivebresib
CAS#: 1445993-26-9
Lot#: CRB70314
Chemical Formula: C22H19F2N3O4S
Exact Mass: 459.1064
Molecular Weight: 459.47

==== CHANNEL f1 =====
NUC1 1H
P1 10.85 usec
PL1 -4.00 dB
PL1W 20.19063568 W
SFO1 400.1324710 MHz
SI 32768
SF 400.1300000 MHz
WDW EM
SSB 0
LB 0.30 Hz
GB 0
PC 1.00



1.01
1.03
4.10
1.06
1.10
1.01
0.97
1.00
3.00
2.04
3.04

Mivebresib HPLC Analysis

Acq. Instrument : LC1260

Seq. Line : 2

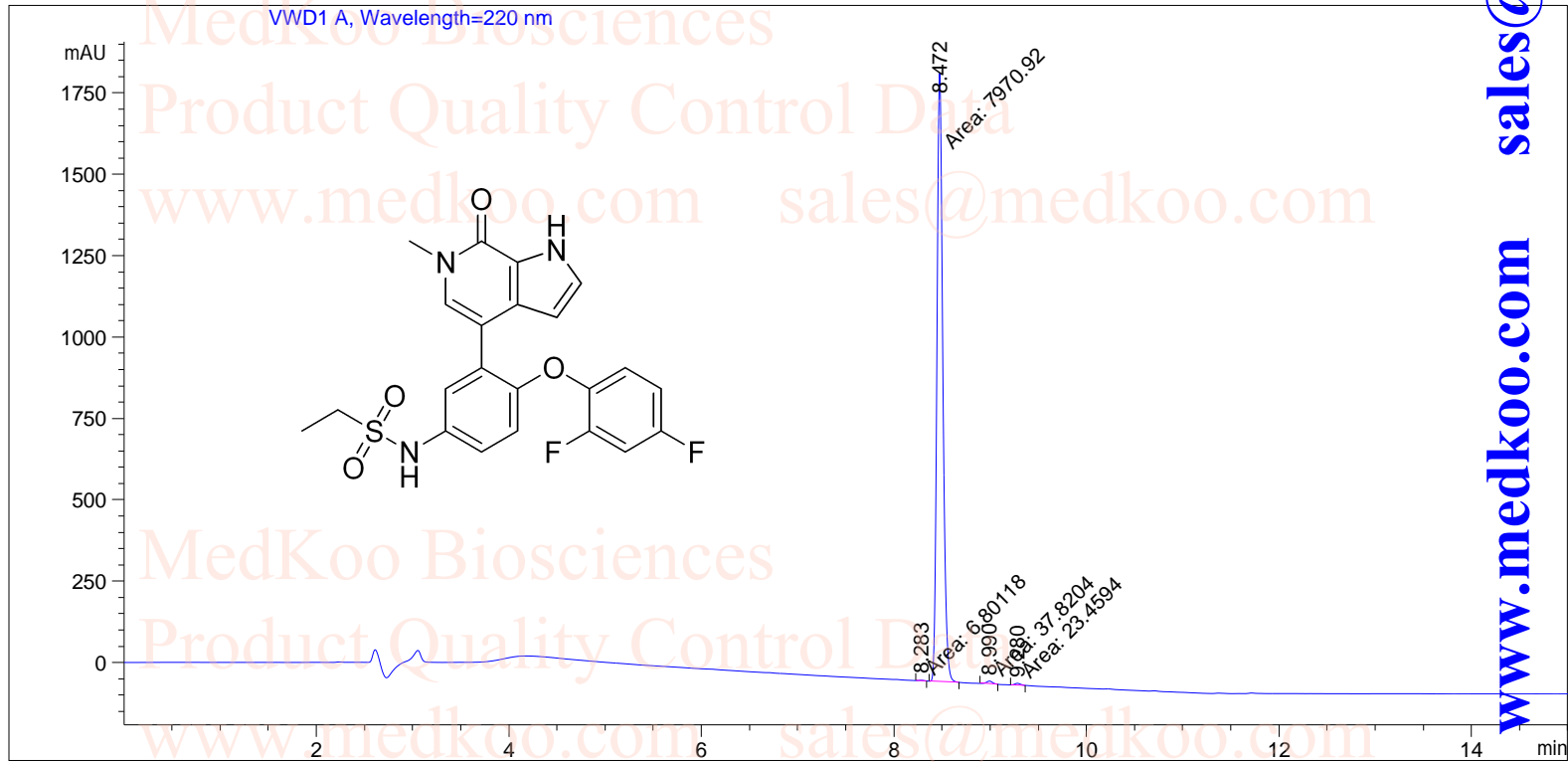
Location : Vial 2

Inj : 1

Inj Volume : 0 µl

Different Inj Volume from Sequence !

Actual Inj Volume : 3 µl



Area Percent Report

Sorted By : Signal
 Multiplier : 1.0000
 Dilution : 1.0000
 Use Multiplier & Dilution Factor with ISTDs

MedKoo Cat#: 206520

Name: Mivebresib

CAS#: 1445993-26-9

Lot#: CRB70314

Chemical Formula: C22H19F2N3O4S

Exact Mass: 459.1064

Molecular Weight: 459.47

Signal 1: VWD1 A, Wavelength=220 nm

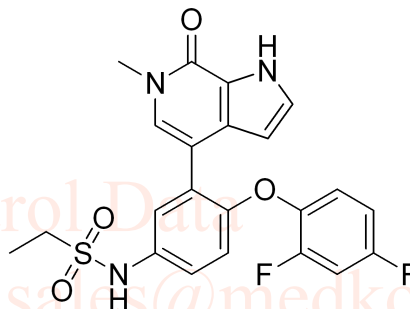
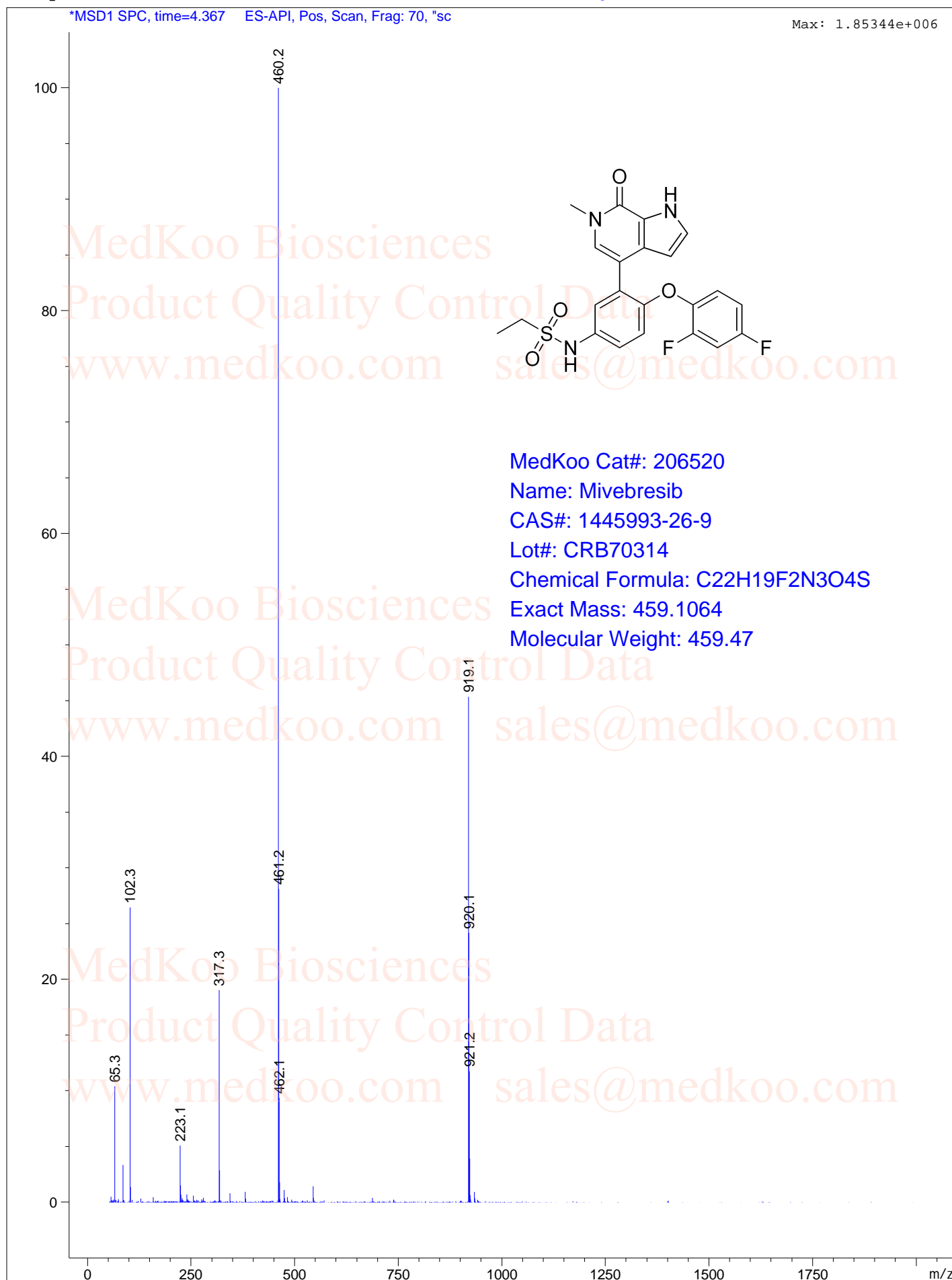
Peak #	RetTime [min]	Type	Width [min]	Area [mAU*s]	Height [mAU]	Area %
1	8.283	MM	0.0635	6.80118	1.78620	0.0846
2	8.472	MM	0.0709	7970.92236	1873.16345	99.1531

Mivebresib MS Analysis

MS Spectrum

*MSD1 SPC, time=4.367 ES-API, Pos, Scan, Frag: 70, "sc

Max: 1.85344e+006



MedKoo Cat#: 206520

Name: Mivebresib

CAS#: 1445993-26-9

Lot#: CRB70314

Chemical Formula: C₂₂H₁₉F₂N₃O₄S

Exact Mass: 459.1064

Molecular Weight: 459.47

sales@medkoo.com

www.medkoo.com

MedKoo Biosciences