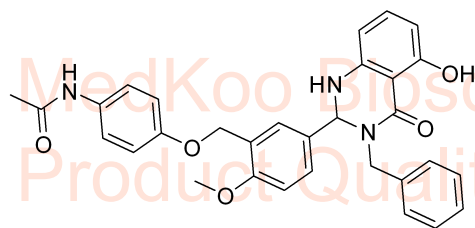
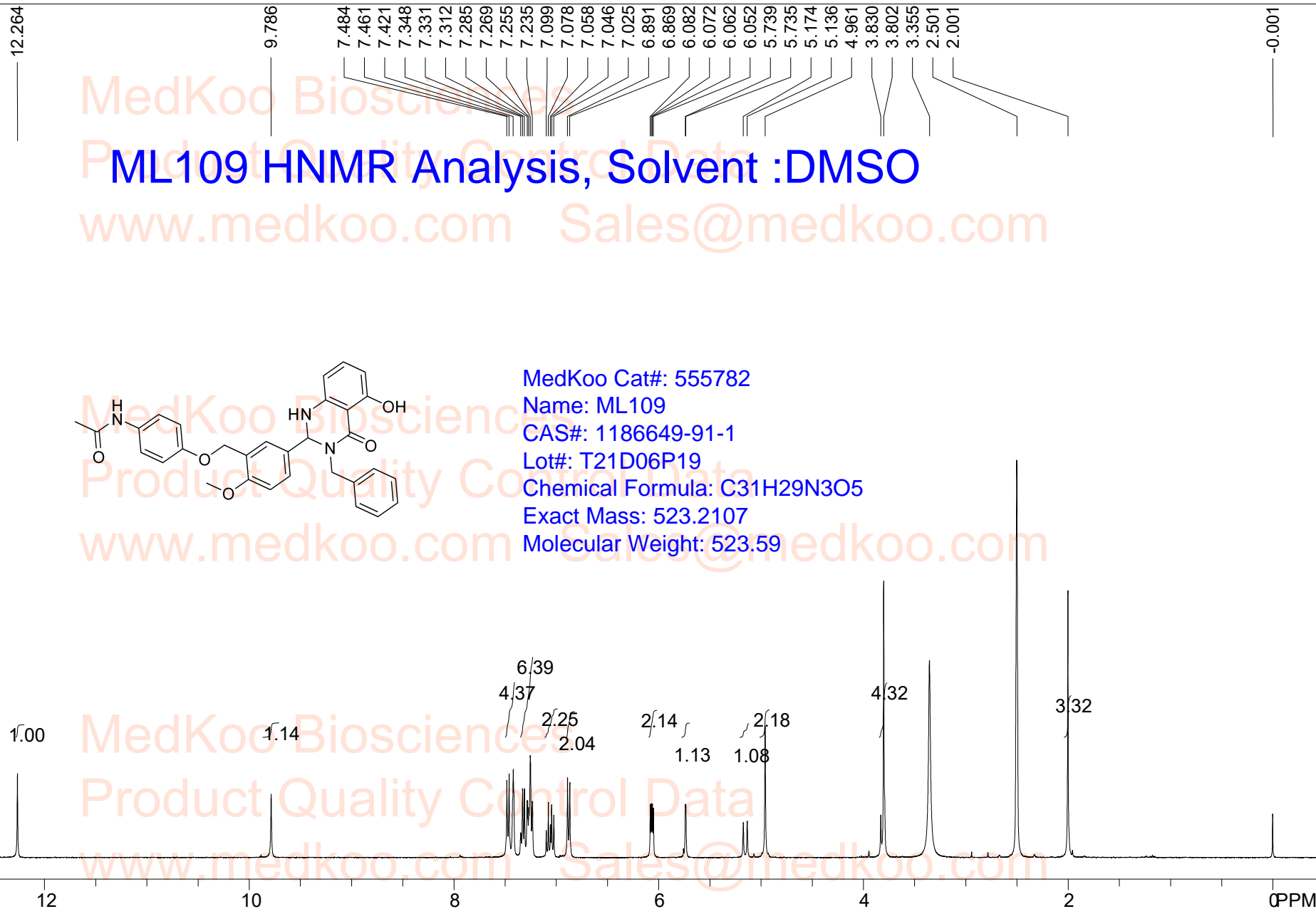


MedKoo Bioscience  
 Product Quality Control Data  
 www.medkoo.com Sales@medkoo.com

## ML109 HNMR Analysis, Solvent :DMSO



MedKoo Cat#: 555782  
 Name: ML109  
 CAS#: 1186649-91-1  
 Lot#: T21D06P19  
 Chemical Formula: C<sub>31</sub>H<sub>29</sub>N<sub>3</sub>O<sub>5</sub>  
 Exact Mass: 523.2107  
 Molecular Weight: 523.59



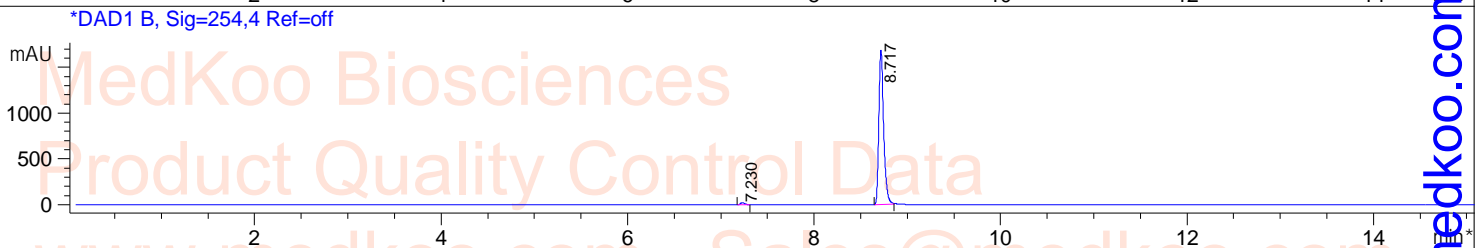
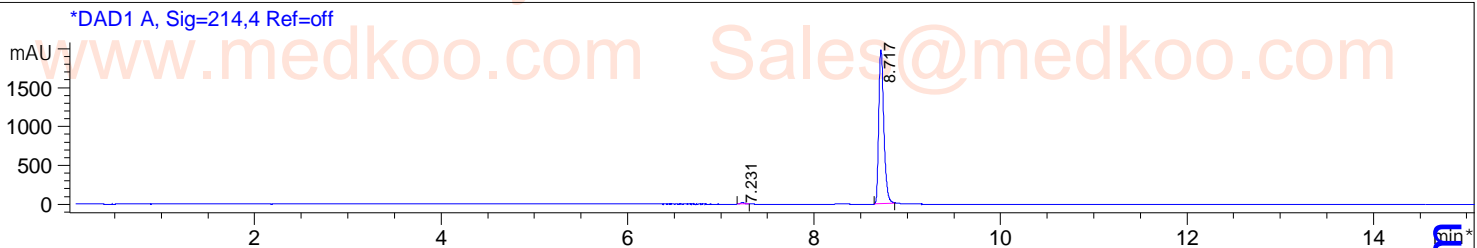
NMRB003, DMSO,

F1: 400.232	F2: 1.000	SW1: 8224	OF1: 2472.2	PTS1d: 32768
EX: zg30	PW: 14.0 usec	PD: 1.0 sec	NA: 8	LB: 0.0

Nuts - \$pdata

# ML109 HPLC Analysis

**Sample Name** : ML-109 **Tgt Mass(EZX)** :  
**Acq. Operator** : **Location** : P1-D-09  
**Spec. Reported** : MS Integration **Inj** : 1  
**Acq. Method** : D:\METHODS\1-POS-15MIN.M **Inj Volume** : 0.9 ul  
**Analysis Method** : D:\METHODS\1-POS-15MIN.M  
**Sample Info** : Easy-Access Method: '1-POS-15MIN.M'  
**Method Info** : Mobile Phase: A: water(0.01%TFA) B: ACN(0.01%TFA)  
**Gradient**: 5%B increase to 95%B within 8.0 min, 95%B for 7.0 min.  
**Flow Rate**: 1.0ml/min  
**Column**: Luna C18(2) 100A, 5um, 4.6\*150mm  
**Column Temperature**: 40 C  
**Detection**: UV(214,4nm) and MS(ESI, Pos mode, 110 to 1500 amu)

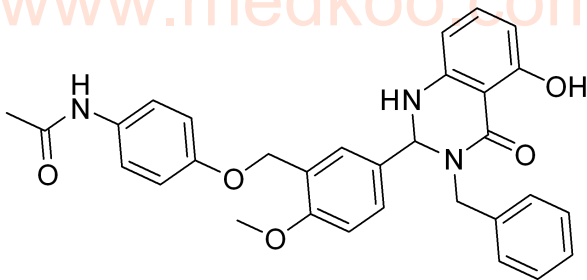


Integration Results for DAD1 A, Sig=214,4 Ref=off

RetTim	Width	Area	Height	Area%
7.23	0.05	66.43	19.29	0.88
8.72	0.06	7515.99	1978.66	99.12

Integration Results for DAD1 B, Sig=254,4 Ref=off

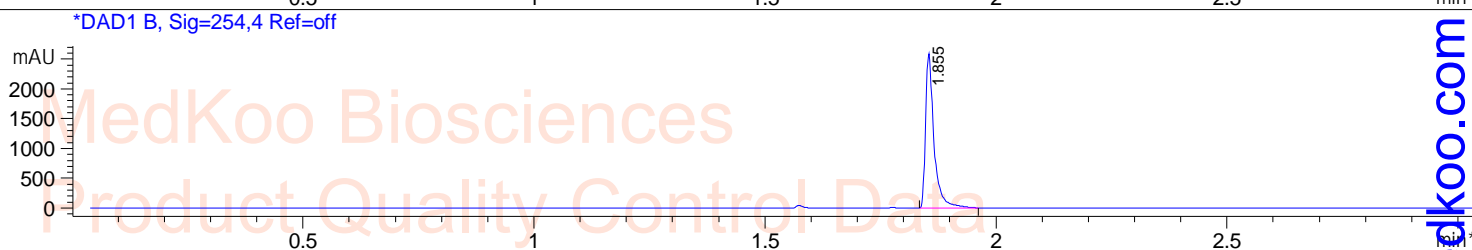
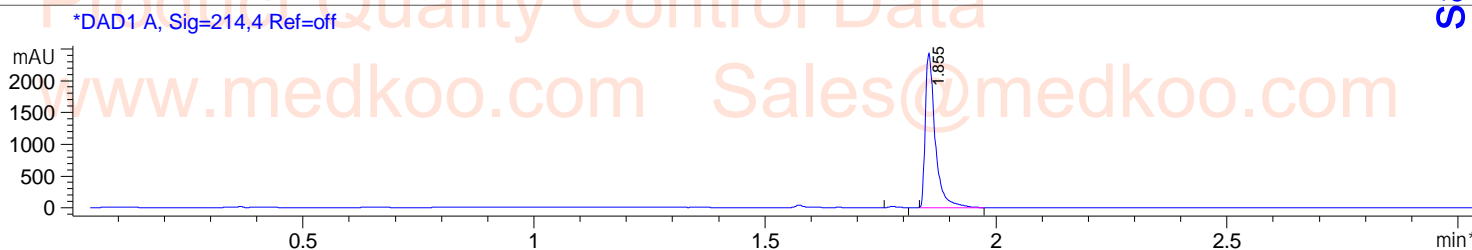
RetTim	Width	Area	Height	Area%
7.23	0.05	83.89	23.86	1.37
8.72	0.05	6027.98	1684.94	98.63



**MedKoo Cat#**: 555782  
**Name**: ML109  
**CAS#**: 1186649-91-1  
**Lot#**: T21D06P19  
**Chemical Formula**: C31H29N3O5  
**Exact Mass**: 523.2107  
**Molecular Weight**: 523.59

# ML109 LC/MS Analysis

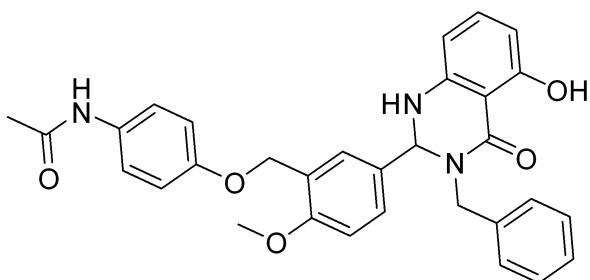
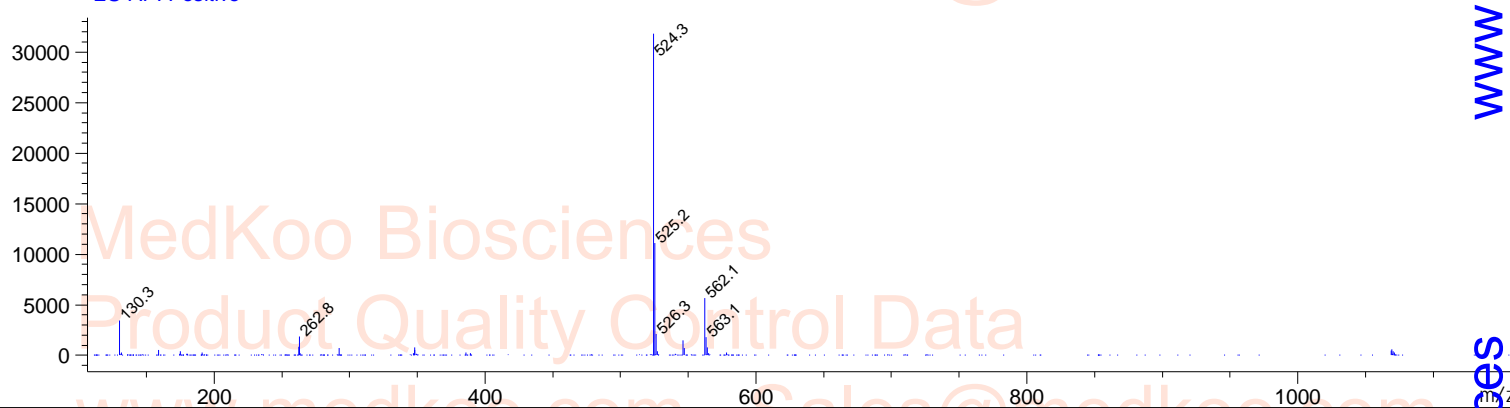
Sample Name : ML-109 Tgt Mass(EZX) :  
Acq. Operator : Location : P1-E-01  
Spec. Reported : MS Integration Inj : 1  
Acq. Method : D:\METHODS\1-POS-3MIN.M Inj Volume : 1.5 ul  
Analysis Method : D:\METHODS\1-POS-3MIN.M  
Sample Info : Easy-Access Method: '1-POS-3MIN.M'  
Method Info : Mobile Phase: A: water(0.01%TFA) B: ACN(0.01%TFA)  
Gradient: 5%B increase to 95%B within 1.3 min, 95%B for 1.7 min.  
Flow Rate: 2.0ml/min  
Column: Sunfire C18, 4.6\*50mm, 3.5um  
Column Temperature: 50 C  
Detection: UV(214,4nm) and MS(ESI, Pos mode, 110 to 1200 amu)



Ret. Time: 1.85

<<<< POSITIVE SPECTRA >>>>

ES-API Positive



MedKoo Cat#: 555782

Name: ML109

CAS#: 1186649-91-1

Lot#: T21D06P19

Chemical Formula: C<sub>31</sub>H<sub>29</sub>N<sub>3</sub>O<sub>5</sub>

Exact Mass: 523.2107

Molecular Weight: 523.59

sales@medkoo.com

www.medkoo.com

MedKoo Biosciences