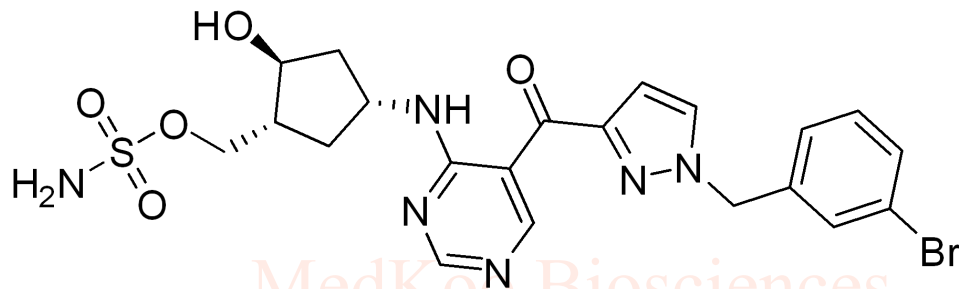


—9.44 {9.01, 8.99} —8.63 {8.09, 8.09} {7.52, 7.52, 7.43, 7.34, 6.92, 6.91} —5.52 {4.91, 4.90, 4.74, 4.72, 4.70, 4.68, 4.11, 4.10, 4.09, 4.00, 3.98, 3.97, 3.96} {2.38, 2.35, 2.14, 2.12, 2.00, 1.81, 1.80, 1.78, 1.77, 1.76, 1.27}

ML792 NMR analysis, solvent = DMSO-d6

Product Quality Control Data

www.medkoo.com sales@medkoo.com



MedKoo Cat#: 407886

Name: ML-792

CAS#: 1644342-14-2

Lot# YXM80630

Chemical Formula: C₂₁H₂₃BrN₆O₅S

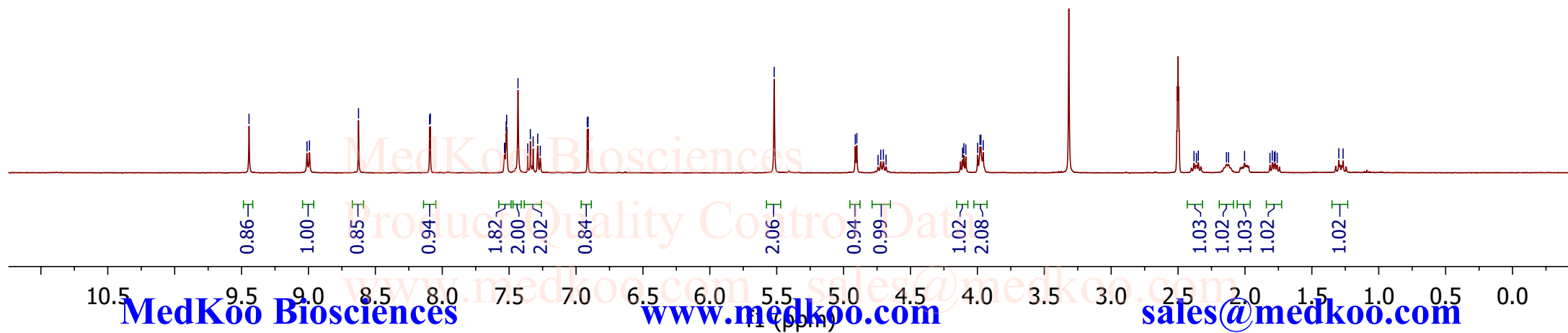
Exact Mass: 550.0634

Molecular Weight: 551.42

MedKoo Biosciences

Product Quality Control Data

www.medkoo.com sales@medkoo.com



ML792 HPLC analysis



Analysis Report

sales@medkoo.com

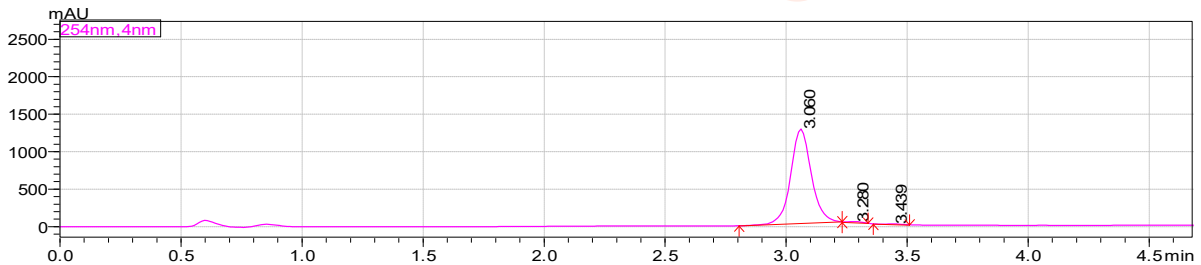
www.medkoo.com

MedKoo Biosciences

<Sample Information>

Sample Name : ML792
Sample ID :
Data Filename : ML792.lcd
Method Filename : 10% ACN gradient.lcm
Batch Filename :
Vial # : 1-1
Injection Volume : 10 uL
Sample Type : Unknown
Acquired by : System Administrator
Processed by : System Administrator

<Chromatogram>



Peak Table

Peak#	Ret. Time	Peak Start	Peak End	Height	Area	Area%
1	3.060	2.805	3.232	1261691	7531159	98.325
2	3.280	3.232	3.339	16145	66003	0.862
3	3.439	3.360	3.509	10446	62277	0.813
Total				1288282	7659439	100.000

MedKoo Cat#: 407886

Name: ML-792

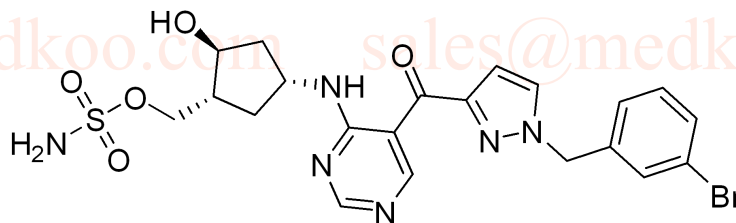
CAS#: 1644342-14-2

Lot# YXM80630

Chemical Formula: C₂₁H₂₃BrN₆O₅S

Exact Mass: 550.0634

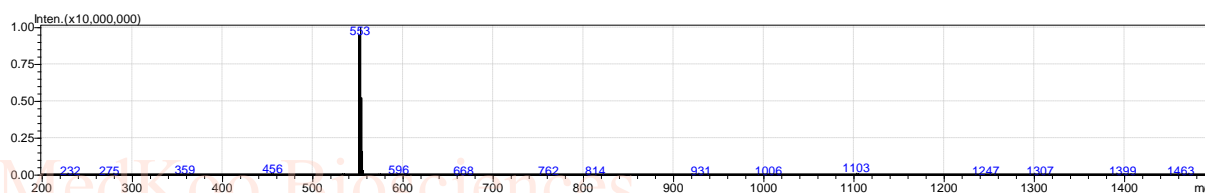
Molecular Weight: 551.42



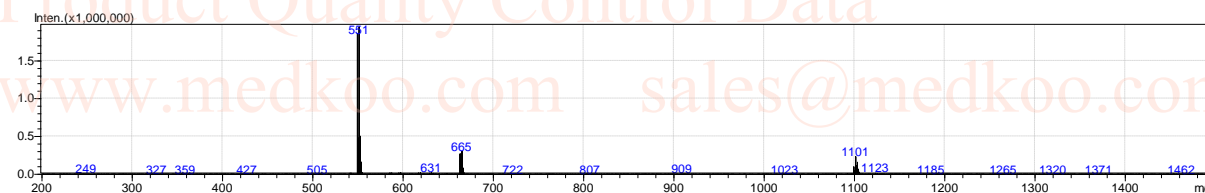
ML792 MS analysis

ML792 MS:

Positive:



Negative:



MedKoo Cat#: 407886

Name: ML-792

CAS#: 1644342-14-2

Lot# YXM80630

Chemical Formula: C₂₁H₂₃BrN₆O₅S

Exact Mass: 550.0634

Molecular Weight: 551.42

