

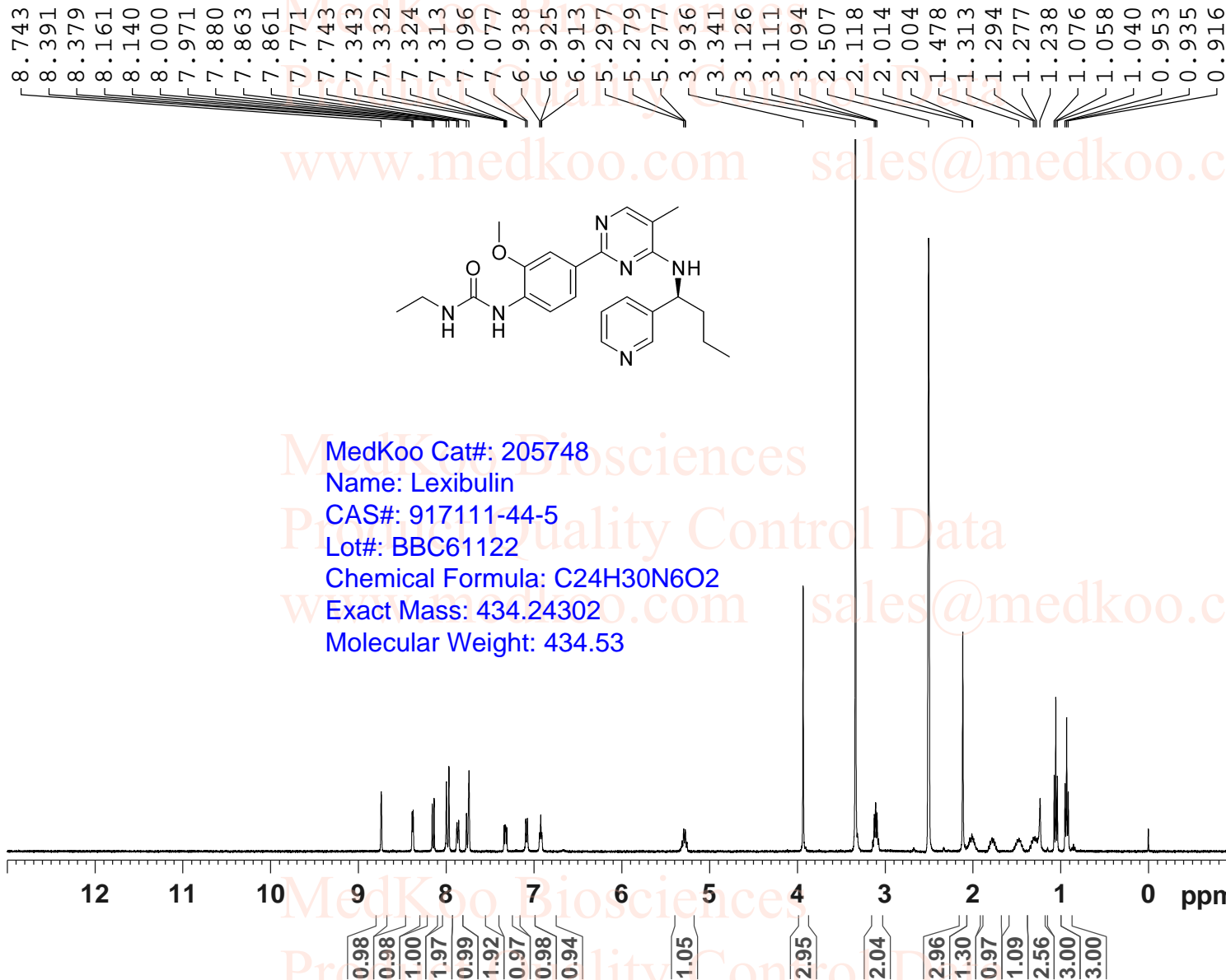
Lexibulin HNMR Analysis, Solvent: DMSO-d6



```

Current Data Parameters
NAME          CYT-997
EXPNO         10
PROCNO        1
F2 - Acquisition Parameters
INSTRUM       spect
PROBHD        5 mm PABBO BB-
PULPROG       zg30
TD            65536
SOLVENT       DMSO
NS            16
DS            2
SWH           8012.820 Hz
FIDRES        0.122266 Hz
AQ            4.0894465 sec
RG            203
DW            62.400 usec
DE            6.50 usec
TE            295.8 K
D1            1.00000000 sec
TD0           1
===== CHANNEL f1 =====
SFO1          400.1324710 MHz
NUC1           1H
P1            13.00 usec
PLW1          19.00000000 W

F2 - Processing parameters
SI            65536
SF            400.1300000 MHz
WDW           no
SSB           0
LB            0 Hz
GB            0
PC            1.00
    
```

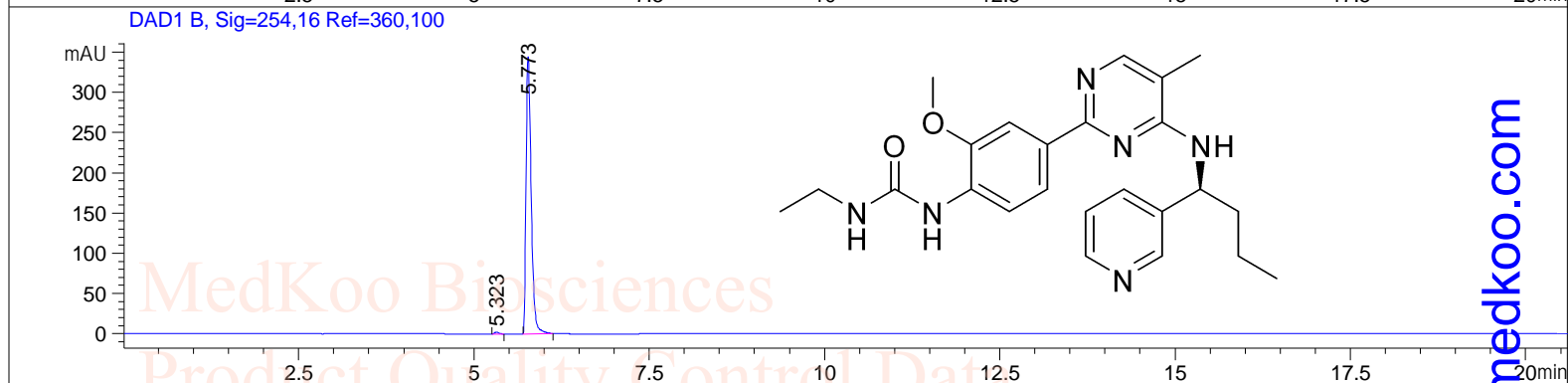
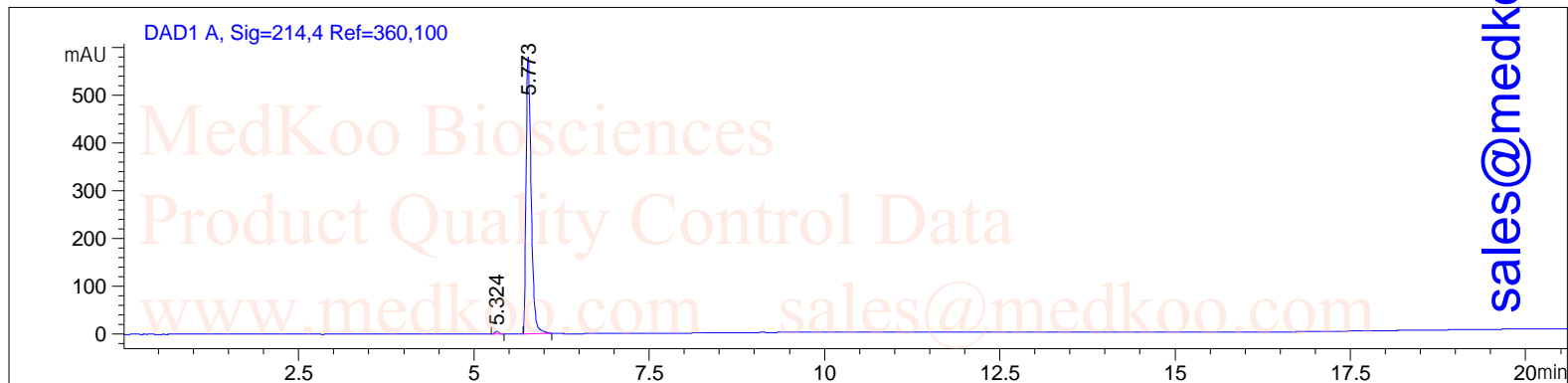


MedKoo Cat#: 205748
 Name: Lexibulin
 CAS#: 917111-44-5
 Lot#: BBC61122
 Chemical Formula: C₂₄H₃₀N₆O₂
 Exact Mass: 434.24302
 Molecular Weight: 434.53

Lexibulin HPLC Analysis

```

=====
User           : ZJ                               Seq. Line    : 2
Instrument     : Instrument 1                     Location     : Vial 26
Sample Name    : YT-997                           Inj          : 1
Acq. Method   : C:\CHEM32\1\DATA\TEST-KR.M      Inj Volume   : 0.5 µl
Analysis Method : C:\CHEM32\1\METHODS\TEST-KR.M
=====
  
```



Area Percent Report

```

=====
Sorted By      : Signal
Multiplier     : 1.0000
Dilution       : 1.0000
Use Multiplier & Dilution Factor with ISTDs
  
```

MedKoo Cat#: 205748
 Name: Lexibulin
 CAS#: 917111-44-5
 Lot#: BBC61122
 Chemical Formula: C₂₄H₃₀N₆O₂
 Exact Mass: 434.24302
 Molecular Weight: 434.53

Signal 1: DAD1 A, Sig=214,4 Ref=360,100

Peak #	Ret. Time [min]	Type	Width [min]	Area [mAU*s]	Height [mAU]	Area %
1	5.324	BB	0.0604	22.31830	5.86826	0.7557
2	5.773	BB	0.0771	2931.00513	579.04938	99.2443
Total:				2953.32343	584.91764	

Signal 2: DAD1 B, Sig=254,16 Ref=360,100

Peak #	Ret. Time [min]	Type	Width [min]	Area [mAU*s]	Height [mAU]	Area %
1	5.323	BB	0.0605	9.68853	2.54105	0.5543
2	5.773	BB	0.0769	1738.20422	344.31992	99.4457
Total:				1747.89275	346.86097	

sales@medkoo.com

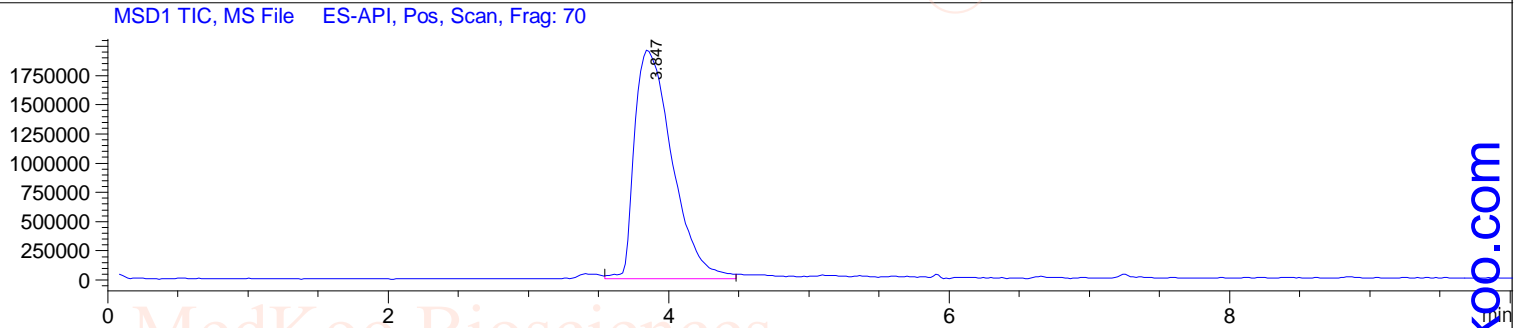
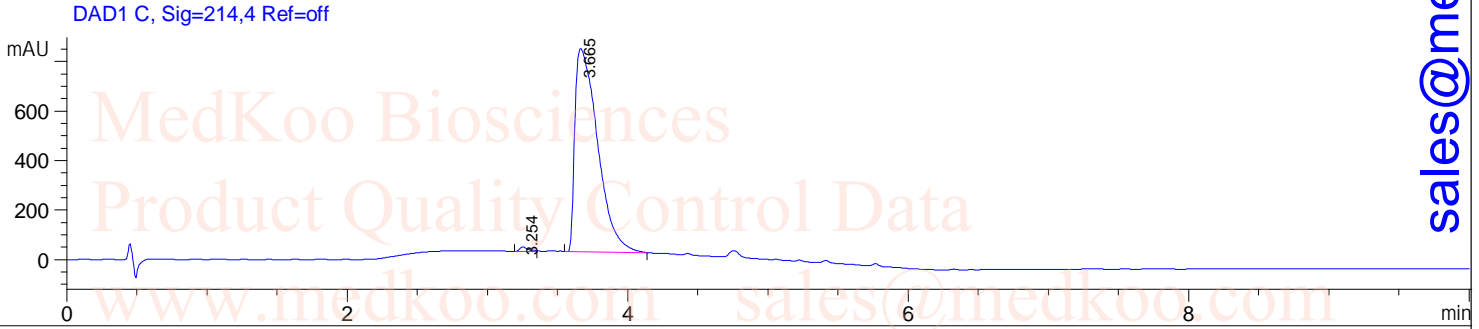
www.medkoo.com

MedKoo Biosciences

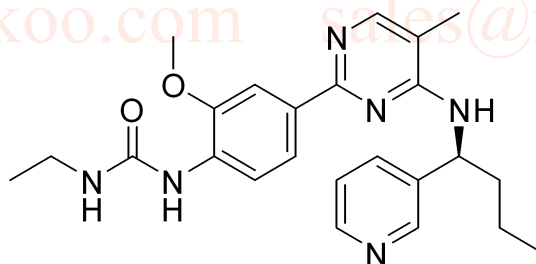
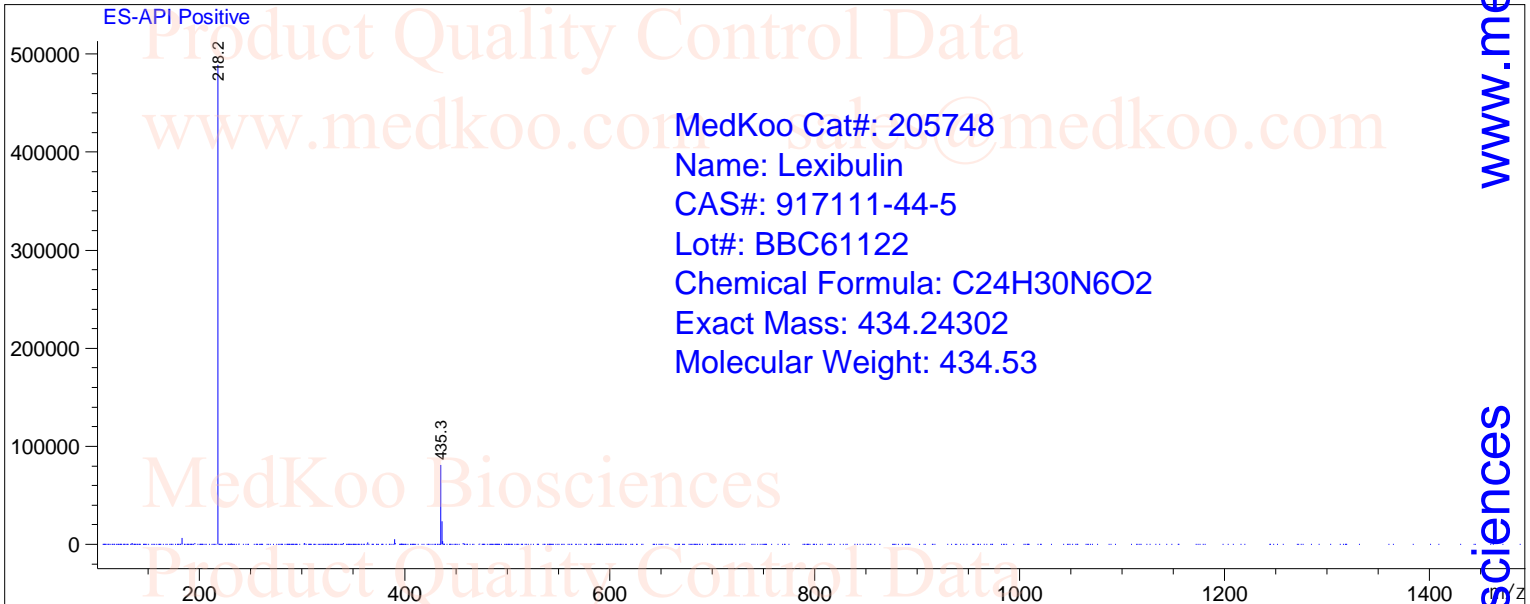
Lexibulin LC/MS Analysis

Sample Name : CYT-997
Acq. Operator : [BSB1]
Spec. Reported : MS Integration
Acq. Method : C:\Chem32\1\METHODS\TEST KR POS_LC.M
Analysis Method : C:\CHEM32\1\METHODS\TEST KR POS_LC.M

Tgt Mass(EZX) :
Location : Vial 55
Inj : 1
Inj Volume : 1 ul



Ret. Time: 3.41 <<<< POSITIVE SPECTRA >>>>



sales@medkoo.com

www.medkoo.com

MedKoo Biosciences