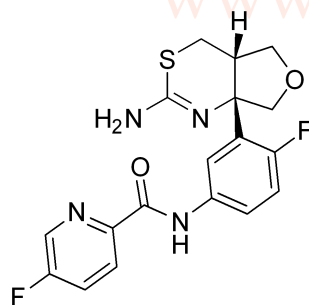
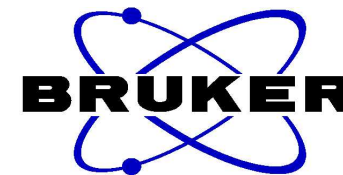


LY2886721 HNMR Analysis, Solvent = DMSO

10.646
8.735
8.729
8.251
8.239
8.229
8.218
8.006
7.984
7.977
7.929
7.923
7.911
7.905
7.870
7.859
7.851
7.175
7.153
7.145
7.123
5.969
4.216
4.195
3.976
3.955
3.905
3.889
3.868
3.740
3.734
3.719
3.713
3.308
3.089
3.066
3.057
2.949
2.934
2.902
2.853
2.512
2.508
2.503



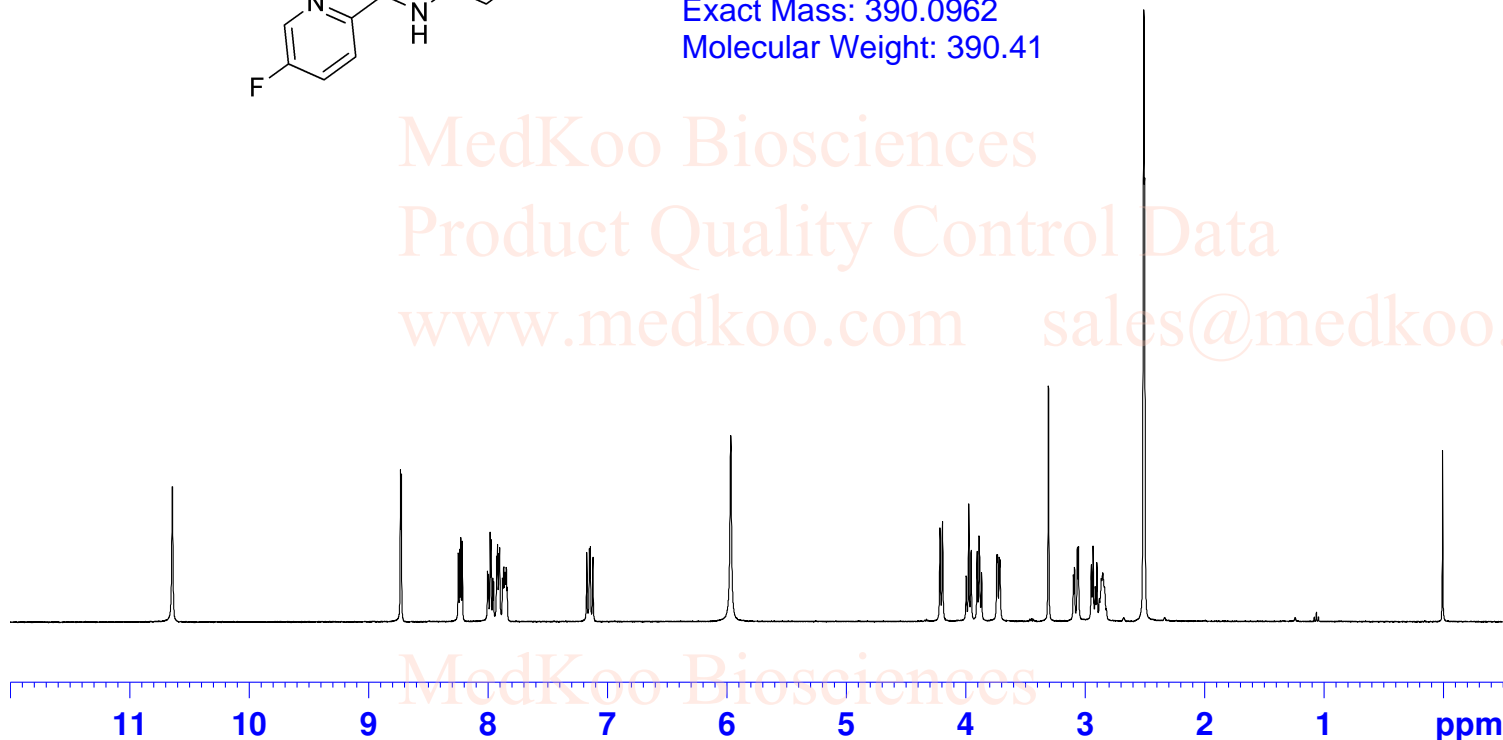
MedKoo Cat#: 522472
Name: LY2886721
CAS#: 1262036-50-9
Lot#: CRB60719
Chemical Formula: C₁₈H₁₆F₂N₄O₂S
Exact Mass: 390.0962
Molecular Weight: 390.41

```

NAME LY2886721
EXPNO 1
PROCNO 1
INSTRUM spect
PROBHD 5 mm PABBO
PULPROG BB-zg30
TD 65536
SOLVENT DMSO
NS 12
DS 0
SWH 8223.685 Hz
FIDRES 0.125483 Hz
AQ 3.9846387 sec
RG 362
DW 60.800 usec
DE 6.50 usec
TE 299.8 K
D1 1.00000000 sec
TD0 1
    
```

```

===== CHANNEL f1 =====
NUC1 1H
P1 10.85 usec
PL1 -4.00 dB
PL1W 20.19063568 W
SFO1 400.1324710 MHz
SI 32768
SF 400.1300000 MHz
WDW EM
SSB 0
LB 0.30 Hz
GB 0
PC 1.00
    
```



0.98

0.97

1.00

2.97

1.02

2.00

1.02

1.02

1.02

1.03

1.07

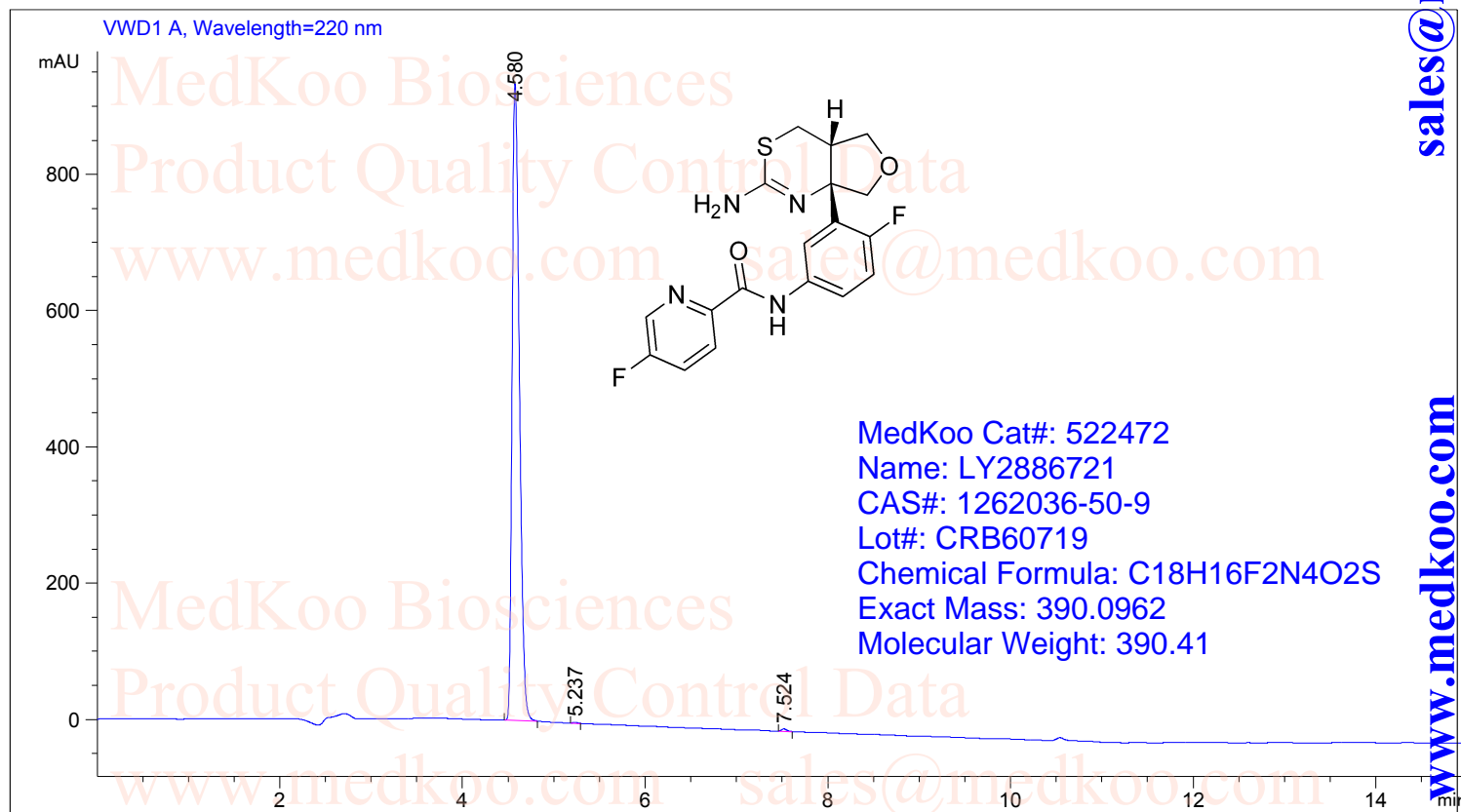
2.09

LY2886721 HPLC Analysis

Acq. Operator : YHJ
 Acq. Instrument : LC1260
 Sample Name : Y2886721
 Acq. Method : E:\DATA\YZJ\DATA\30-90 AD 15MIN.M
 Analysis Method : C:\CHEM32\1\METHODS\20-50 AD

Seq. Line : 2
 Location : Vial 58
 Inj : 1
 Inj Volume : 1.0 µl

Additional Info : Peak(s) manually integrated



Area Percent Report

Sorted By : Signal
 Multiplier : 1.0000
 Dilution : 1.0000
 Use Multiplier & Dilution Factor with ISTDs

Signal 1: VWD1 A, Wavelength=220 nm

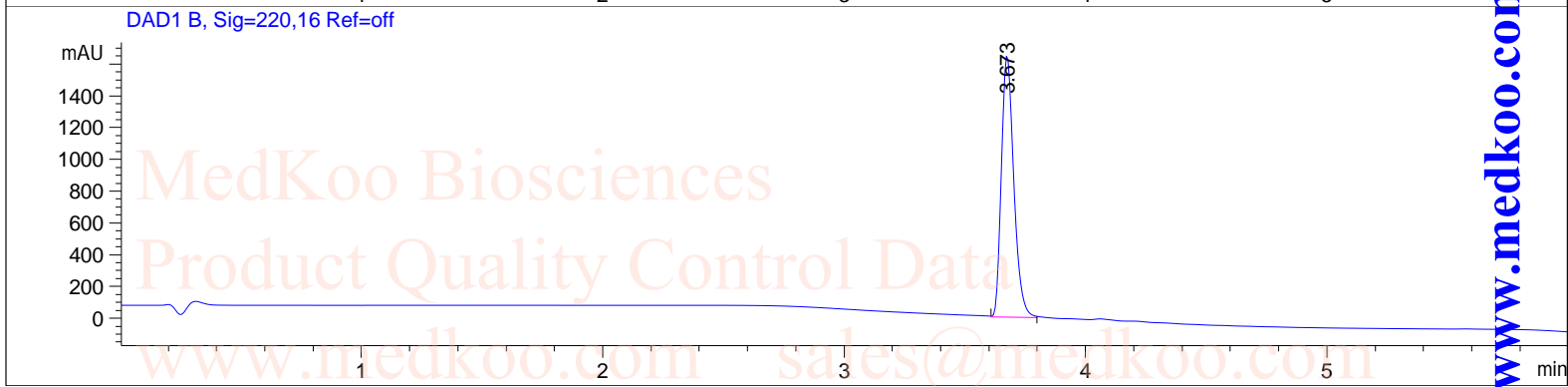
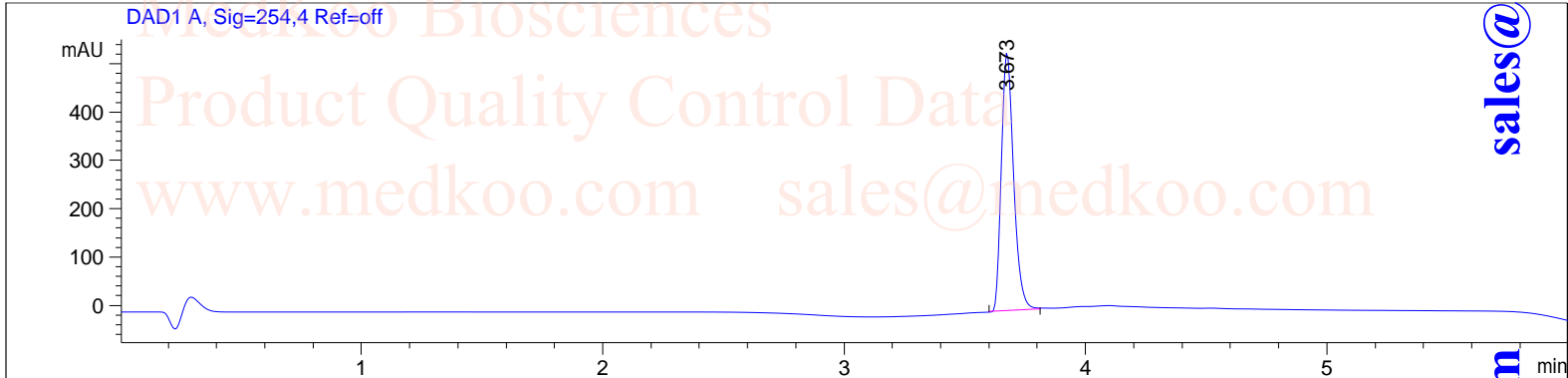
Peak #	Ret.Time [min]	Type	Width [min]	Area [mAU*s]	Height [mAU]	Area %
1	4.580	MM	0.0928	5209.23486	935.36786	99.6101
2	5.237	MM	0.0727	6.25880	1.43521	0.1197
3	7.524	MM	0.0686	14.12934	3.43465	0.2702

Total: 5229.62299 940.23771

LY2886721 LC/MS Analysis

=====

Acq. Operator : Instrument 1	Seq. Line : 1
Acq. Instrument : Instrument 1	Location : Vial 21
Sample Name : LY2886721	Inj : 1
	Inj Volume : 0 µl
Different Inj Volume from Sequence !	Actual Inj Volume : 4 µl
Acq. Method : D:\Public\5-95 6MIN.M	
Analysis Method : D:\PUBLIC\DA.M (5-95) 6MIN.M	



MS Spectrum

