

7.796
7.775
7.535
7.520
7.438
7.423
7.407
7.204
7.188
7.176
7.162
7.124
7.108
7.010
6.996

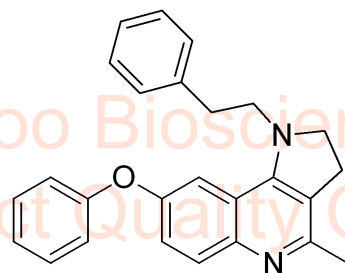
4.868

3.872
3.852
3.844
3.830
3.813
3.308
3.305
3.107
3.086
3.068
2.899
2.885
2.870
2.469

-0.001

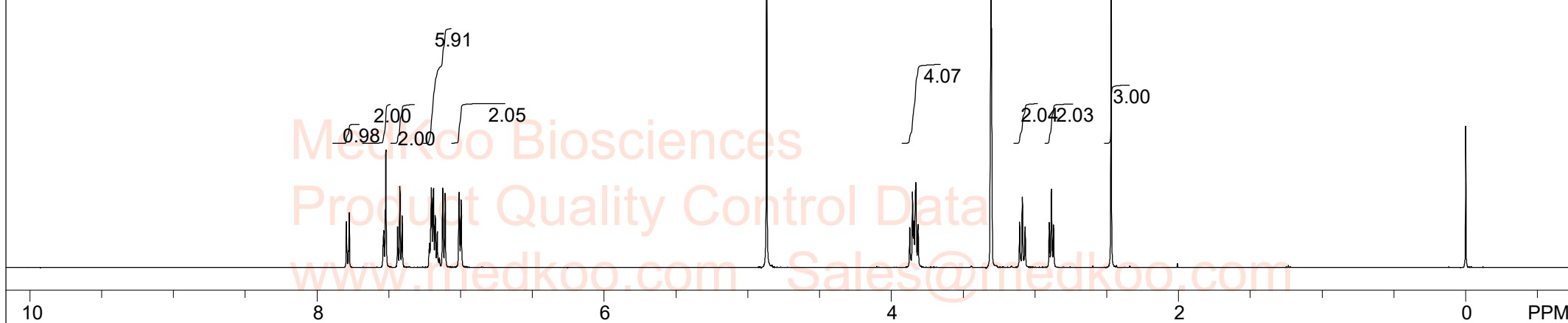
HT-61 HNMR Analysis, Solvent: MeOD

MedKoo Biosciences
Product Quality Control Data
www.medkoo.com Sales@medkoo.com



MedKoo Cat#: 526868
Name: HT-61
CAS#: 936622-80-9 (free base)
Lot#: B21B11C12
Chemical Formula: C₂₆H₂₄N₂O
Exact Mass: 380.1889
Molecular Weight: 380.49

MedKoo Biosciences
Product Quality Control Data
www.medkoo.com Sales@medkoo.com



MeOD,							
F1: 500.133	F2: 1.000	SW1: 10331		OF1: 3076.0		PTS1d: 32768	
EX: zg30		PW: 13.7 usec	PD: 1.0 sec	NA: 8	LB: 0.0		Nuts - \$pdata

HT-61 HPLC Analysis

Sample Name : HT-61

Method Info : Mobile Phase: A: water(0.01%TFA) B: ACN(0.01%TFA)

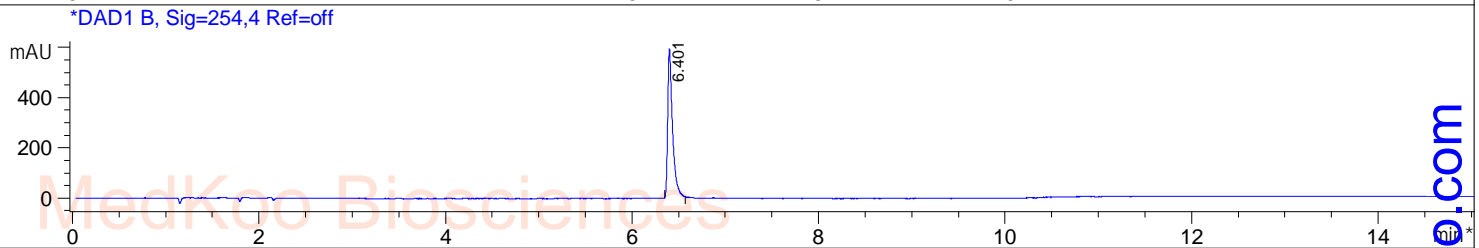
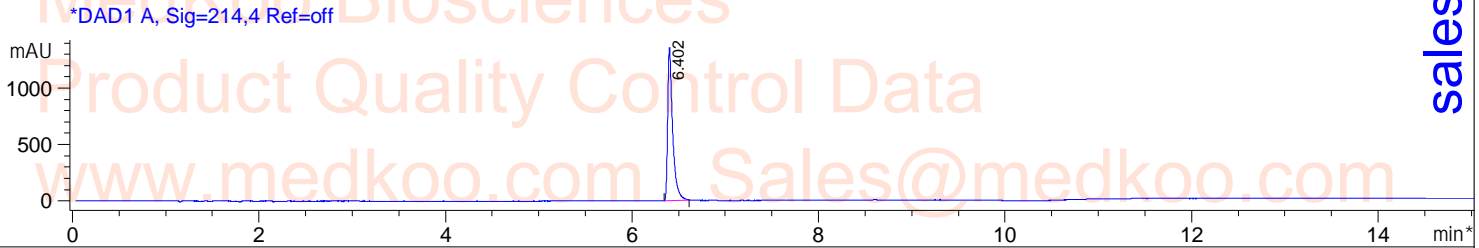
Gradient: 5% increase to 95%B within 7.5 min, 95%B for 7.5 min.

Flow Rate: 1.0ml/min

Column: Sunfire C18, 4.6*150mm, 3.5um

Column Temperature: 45 C

Detection: UV(214,4nm) and MS(ESI, Pos mode, 110 to 1500 amu)

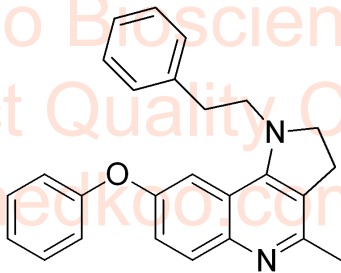


Integration Results for DAD1 A, Sig=214,4 Ref=off

RetTim	Width	Area	Height	Area%
6.40	0.05	5003.88	1356.94	100.00

Integration Results for DAD1 B, Sig=254,4 Ref=off

RetTim	Width	Area	Height	Area%
6.40	0.05	2132.94	593.90	100.00



MedKoo Cat#: 526868

Name: HT-61

CAS#: 936622-80-9 (free base)

Lot#: B21B11C12

Chemical Formula: C₂₆H₂₄N₂O

Exact Mass: 380.1889

Molecular Weight: 380.49

HT-61 LC/MS Analysis

Sample Name : HT-61

Method Info : Mobile Phase: A: water(0.01%TFA) B: ACN(0.01%TFA)

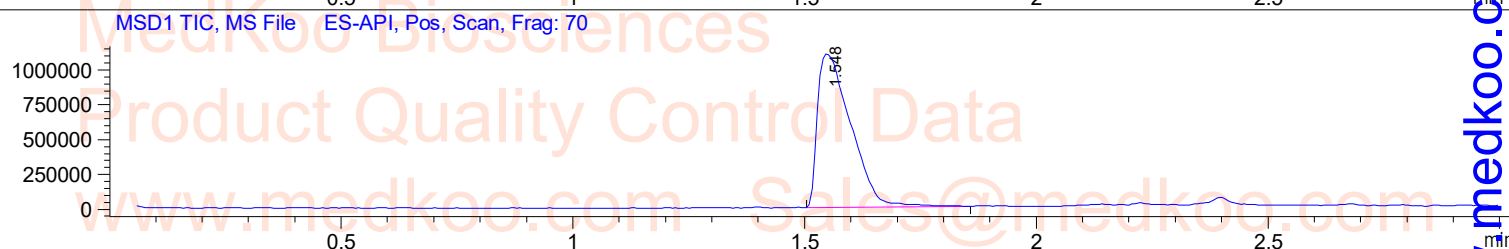
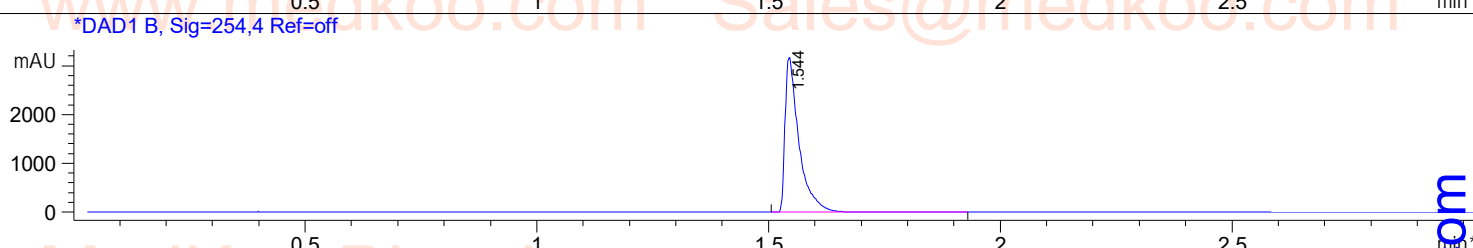
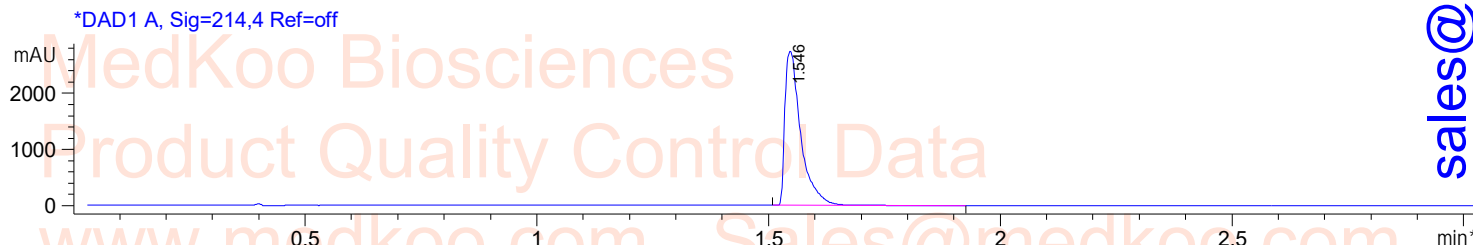
Gradient: 5% increase to 95%B within 1.3 min, 95%B for 1.7 min.

Flow Rate: 2.0ml/min

Column: Sunfire C18, 4.6*50mm, 3.5um

Column Temperature: 45 C

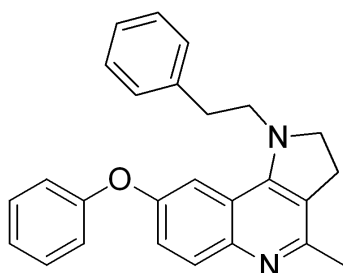
Detection: UV(214, 4nm) and MS(ESI, Pos mode, 110 to 1000 amu)



Ret. Time: 1.55

<<<< POSITIVE SPECTRA >>>>

ES-API Positive



MedKoo Cat#: 526868

Name: HT-61

CAS#: 936622-80-9 (free base)

Lot#: B21B11C12

Chemical Formula: C₂₆H₂₄N₂O

Exact Mass: 380.1889

Molecular Weight: 380.49

sales@medkoo.com

www.medkoo.com

MedKoo Biosciences