

# Gboxin chloride HNMR Analysis, Solvent: CDCl<sub>3</sub>

Product Quality Control Data

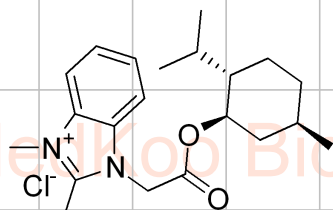
www.medkoo.com Sales@medkoo.com

Product Quality Control Data

www.medkoo.com Sales@medkoo.com

Product Quality Control Data

www.medkoo.com Sales@medkoo.com



MedKoo Cat#: 207091

Name: Gboxin chloride

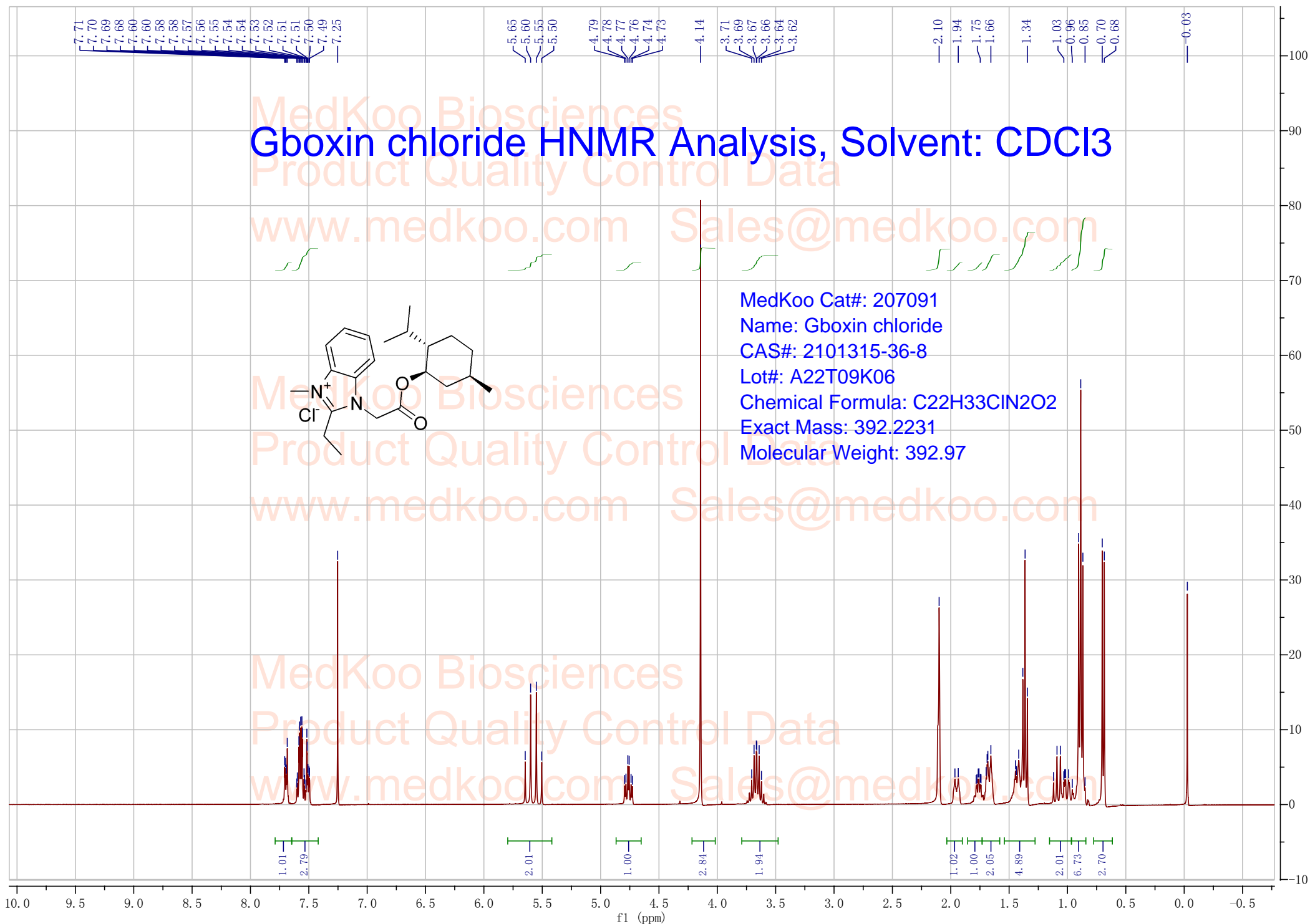
CAS#: 2101315-36-8

Lot#: A22T09K06

Chemical Formula: C<sub>22</sub>H<sub>33</sub>ClN<sub>2</sub>O<sub>2</sub>

Exact Mass: 392.2231

Molecular Weight: 392.97



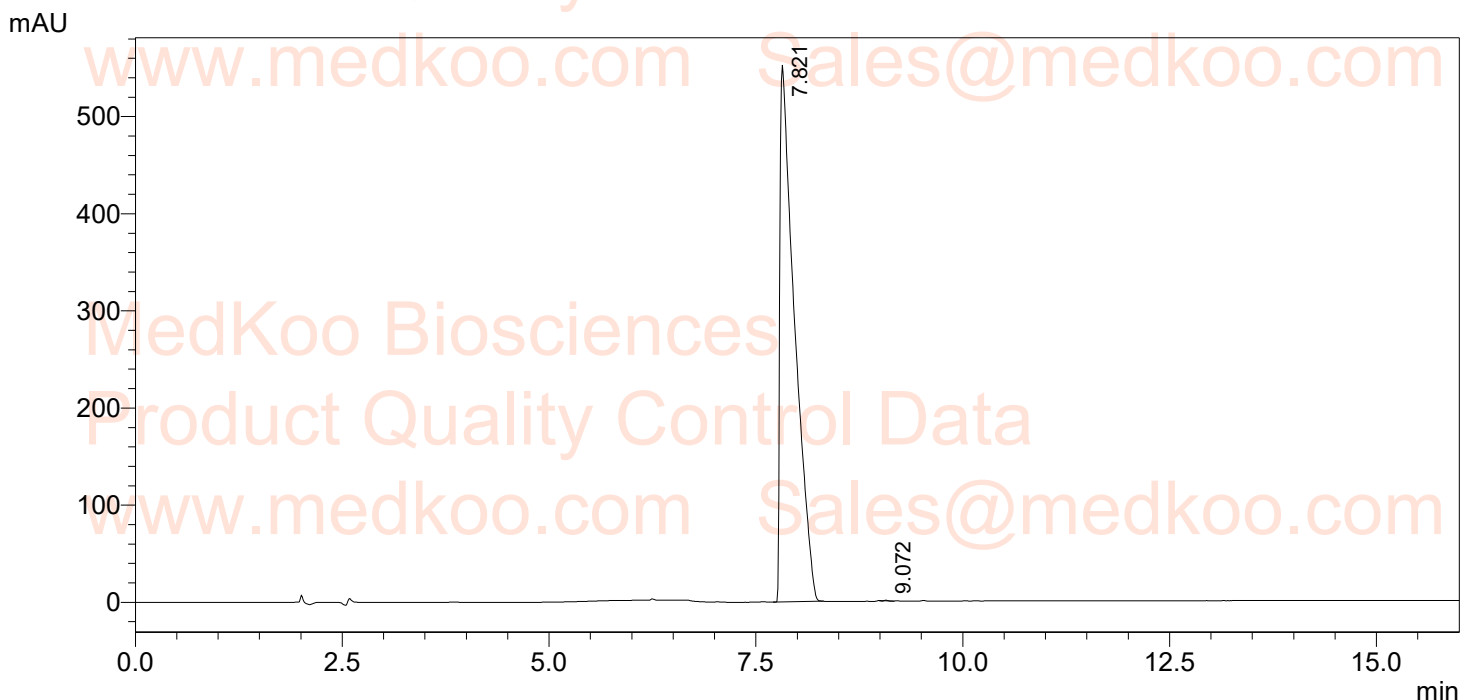
# Gboxin chloride HPLC Analysis

Sample Name : 2101315-36-8  
Vial# : 1-20

Injection Volume : 2 uL

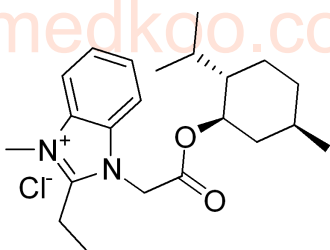
Data Filename : E:\DATA\2101315-36-8.lcd  
Method Filename : C:\LabSolutions\Data\Project1\LCMS-WT1.lcm

FLOW RATE: 1ML/MIN  
COLUMN: INERTSIL ODS-SP 150\*4.6MM 5UM  
COLUME TEMPERATURE: 25  
GRADIENT PROGRAMME:  
TIME(MIN) MOBILE PHASE-A(H2O+0.1%HCOOH) MOBILE PHASE-B(CH3CN+0.1%HCOOH)  
0 90 10  
5 0 100  
15 0 100



PDA Ch2 265nm

Peak#	Ret. Time	Height	Height%	Area	Area%
1	7.821	552793	99.867	6813847	99.992
2	9.072	738	0.133	557	0.008
总计		553531	100.000	6814404	100.000



MedKoo Cat#: 207091

Name: Gboxin chloride

CAS#: 2101315-36-8

Lot#: A22T09K06

Chemical Formula: C<sub>22</sub>H<sub>33</sub>ClN<sub>2</sub>O<sub>2</sub>

Exact Mass: 392.2231

Molecular Weight: 392.97

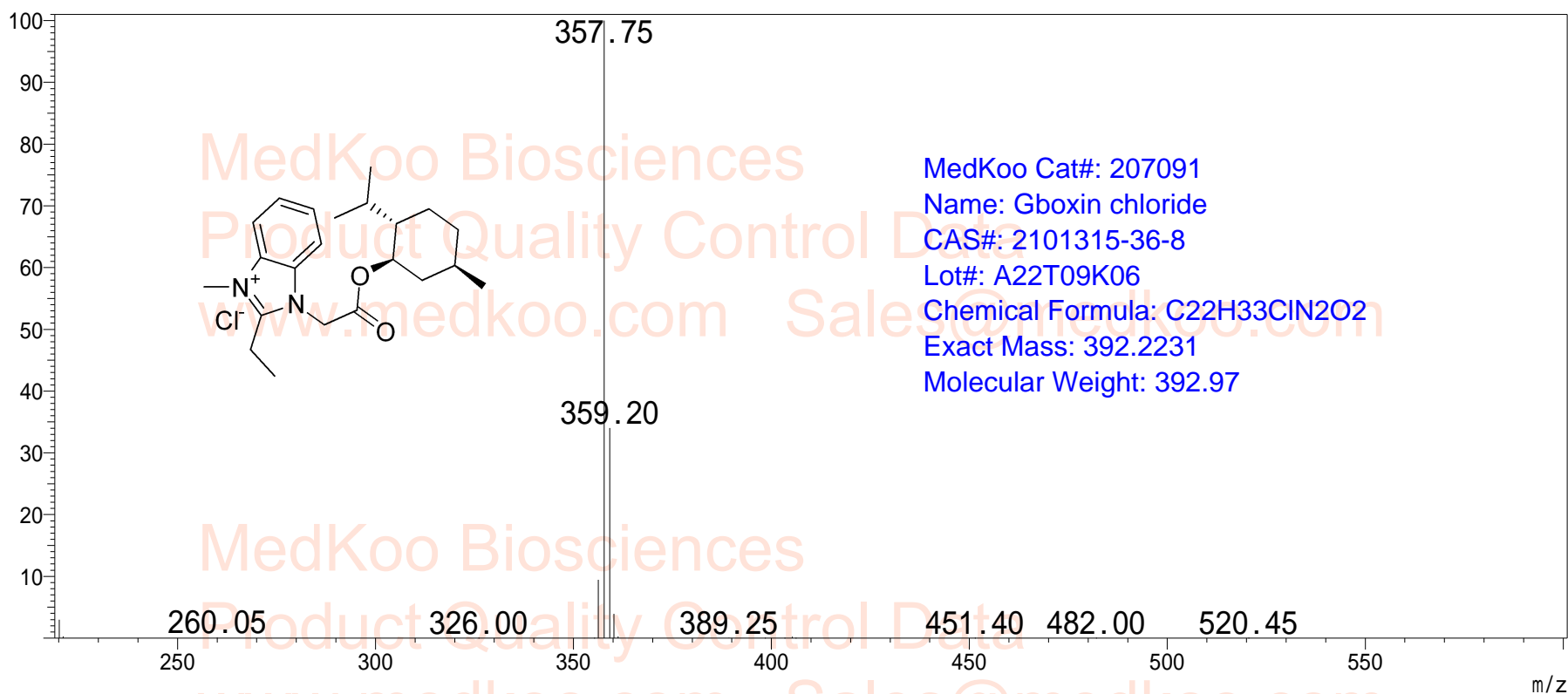
# Gboxin chloride MS Analysis

Sample Name : 2101315-36-8  
User : System Administrator  
Sample Type : Unknown  
Tray # : 1  
Vial# : 20  
Inj. Volume : 2  
Data File : 2101315-36-8.lcd  
Method File : LCMS-WT1.lcm

MedKoo Biosciences

Product Quality Control Data

www.medkoo.com Sales@medkoo.com



MedKoo Biosciences

Product Quality Control Data

www.medkoo.com Sales@medkoo.com