

GW7647 CDCl3

7.45
7.43
7.26
7.16
7.14

5.87

3.61
3.44
3.42
3.40
3.04
3.02
3.00
2.85
2.83
2.82

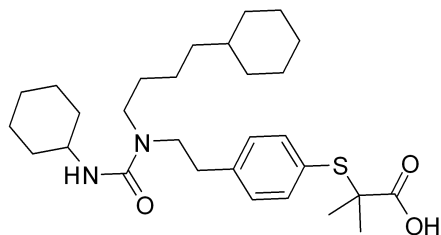
1.90
1.88
1.87
1.68
1.66
1.49
1.47
1.45
1.37
1.33
1.25
1.23
1.21
1.21
1.19
1.18
1.17
1.16
1.14
1.05

GW-7647 HNMR Analysis, solvent = CDCl3

MedKoo Biosciences

Product Quality Control Data

www.medkoo.com sales@medkoo.com



MedKoo Cat#: 526871

Name: GW-7647

CAS#: 265129-71-3

Lot#: YXM71024

Chemical Formula: C29H46N2O3S

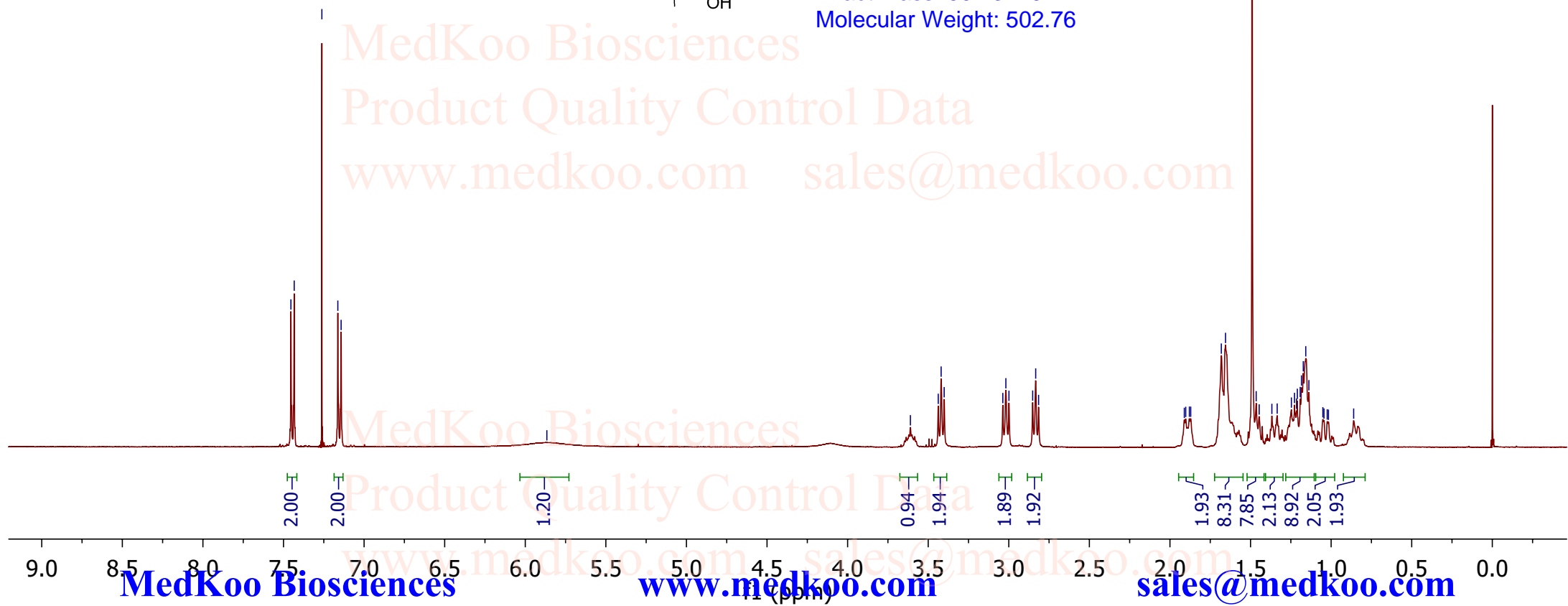
Exact Mass: 502.3229

Molecular Weight: 502.76

MedKoo Biosciences

Product Quality Control Data

www.medkoo.com sales@medkoo.com



MedKoo Biosciences

www.medkoo.com

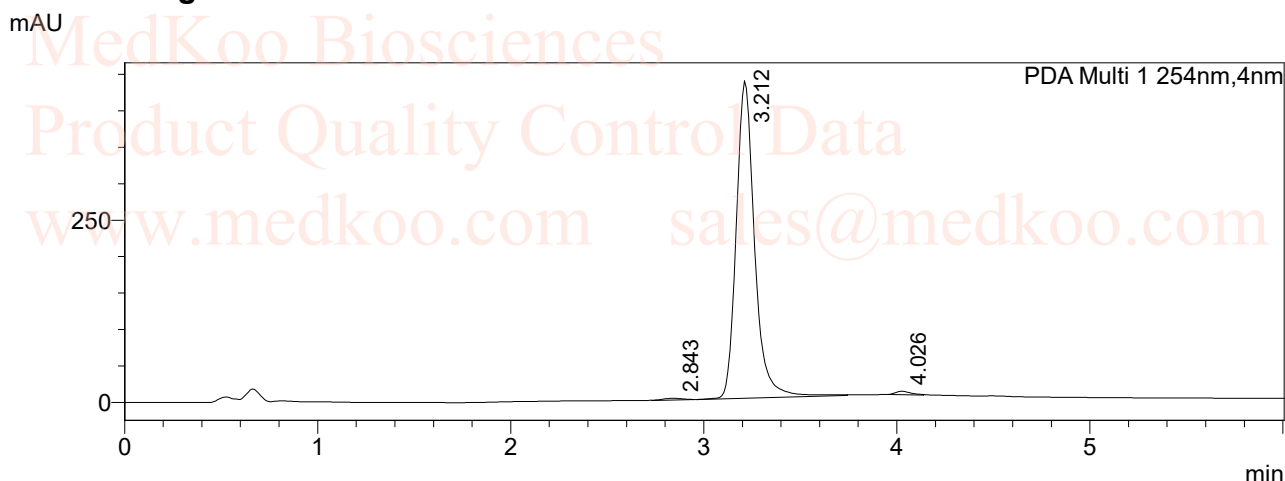
sales@medkoo.com

GW-7647 HPLC Analysis

<Sample Information>

Sample Name : TEST
Sample ID :
Data Filename : gw7647 hplc.lcd
Method Filename : 70%MeOH-PROGRAM.lcm
Batch Filename :
Vial # : 1-174
Injection Volume : 20 uL
Sample Type : Unknown
Acquired by : System Administrator
Processed by : System Administrator

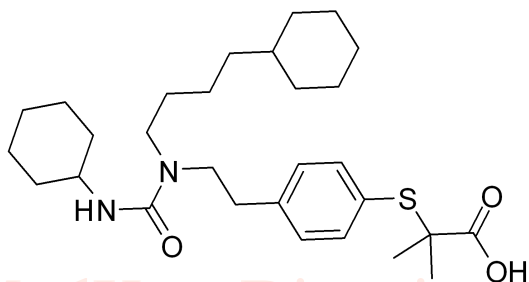
<Chromatogram>



Peak Table

PDA Ch1 254nm

Peak#	Ret. Time	Peak Start	Peak End	Area	Height	Area%
1	2.843	2.731	2.944	16909	2330	0.579
2	3.212	2.965	3.744	2878764	435047	98.521
3	4.026	3.957	4.139	26294	4833	0.900
Total				2921967	442210	100.000



MedKoo Cat#: 526871

Name: GW-7647

CAS#: 265129-71-3

Lot#: YXM71024

Chemical Formula: C₂₉H₄₆N₂O₃S

Exact Mass: 502.3229

Molecular Weight: 502.76

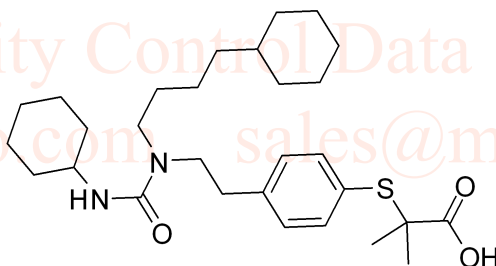
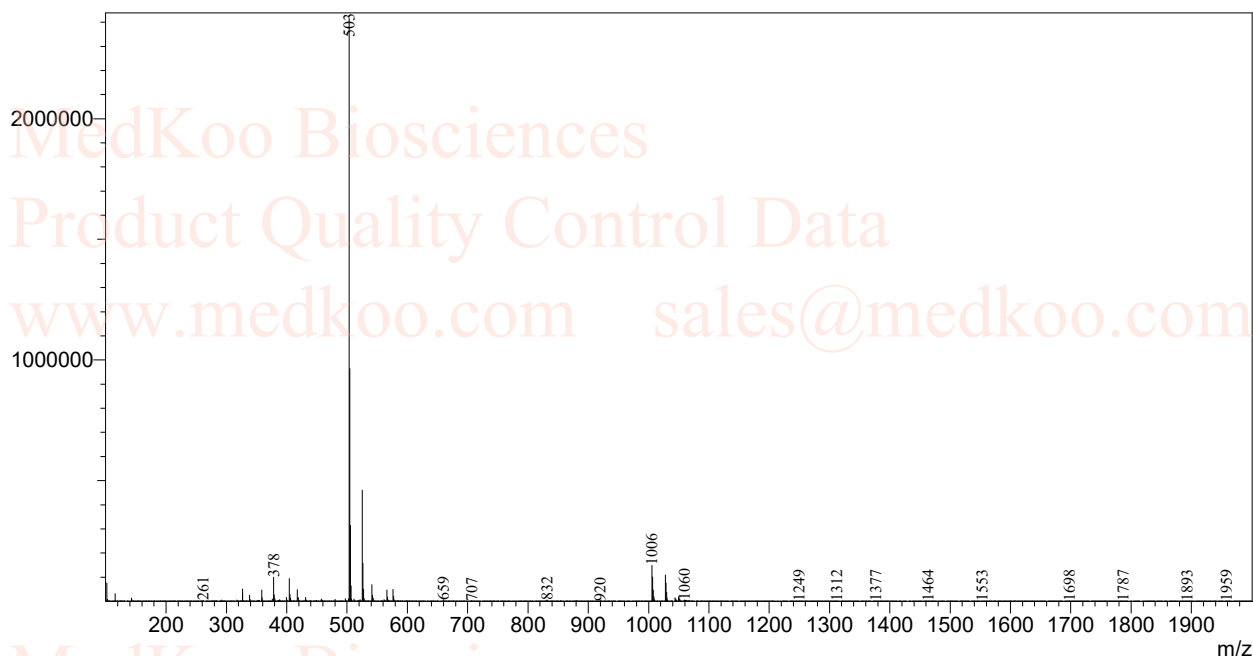
MedKoo Biosciences

Product Quality Control Data

www.medkoo.com sales@medkoo.com

GW-7647 MS analysis

Line#:1 R.Time:----(Scan#:----)
MassPeaks:1900
RawMode:Averaged 5.567-5.900(335-355) BasePeak:503(2414585)
BG Mode:None Segment 1 - Event 1



MedKoo Cat#: 526871
Name: GW-7647
CAS#: 265129-71-3
Lot#: YXM71024
Chemical Formula: C₂₉H₄₆N₂O₃S
Exact Mass: 502.3229
Molecular Weight: 502.76