

12.034

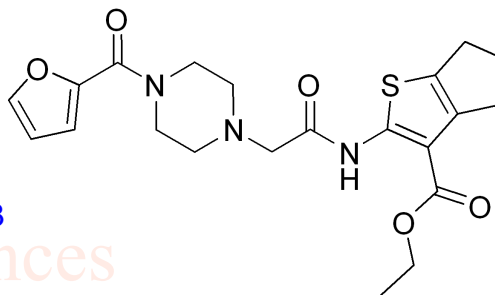
Current Data Parameters
NAME 1905
EXPNO 718
PROCNO 1

F2 - Acquisition Parameters
INSTRUM Avance
PROBHD Z116098_0732 (
PULPROG zg30
TD 65536
SOLVENT DMSO
NS 4
DS 2
SWH 7812.500 Hz
FIDRES 0.238419 Hz
AQ 4.1943040 sec
RG 101
DW 64.000 usec
DE 13.86 usec
TE 295.8 K
D1 1.00000000 sec
TD0 1
SFO1 400.1024706 MHz
NUC1 1H
P1 10.20 usec
PLW1 15.05599976 W

F2 - Processing parameters
SI 65536
SF 400.1000000 MHz
WDW EM
SSB 0
LB 0.30 Hz
GB 0
PC 1.00

GLX35322 HNMR Analysis, Solvent:DMSO

www.medkoo.com sales@medkoo.com



MedKoo Cat#: 555343

Name: GLX351322

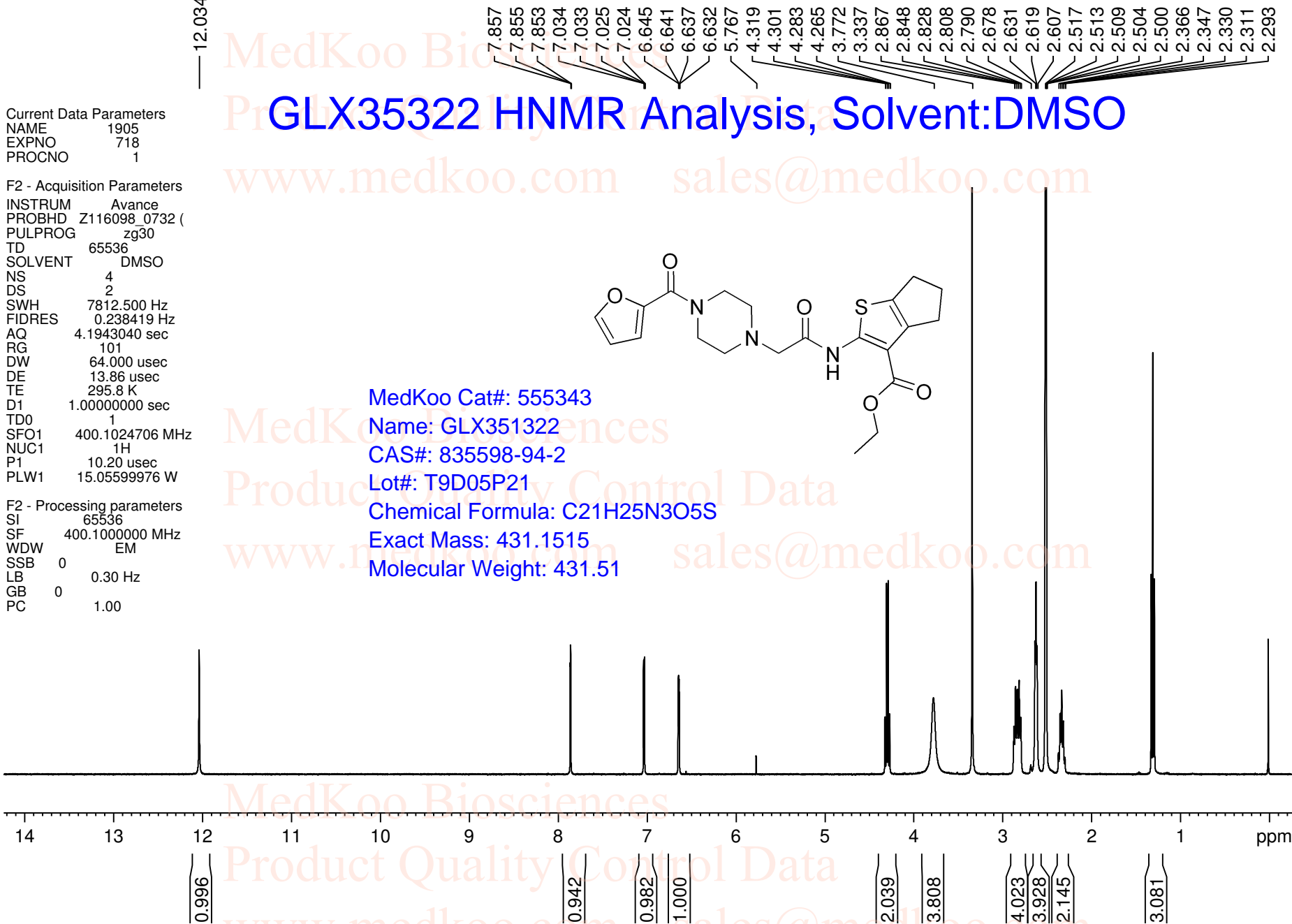
CAS#: 835598-94-2

Lot#: T9D05P21

Chemical Formula: C₂₁H₂₅N₃O₅S

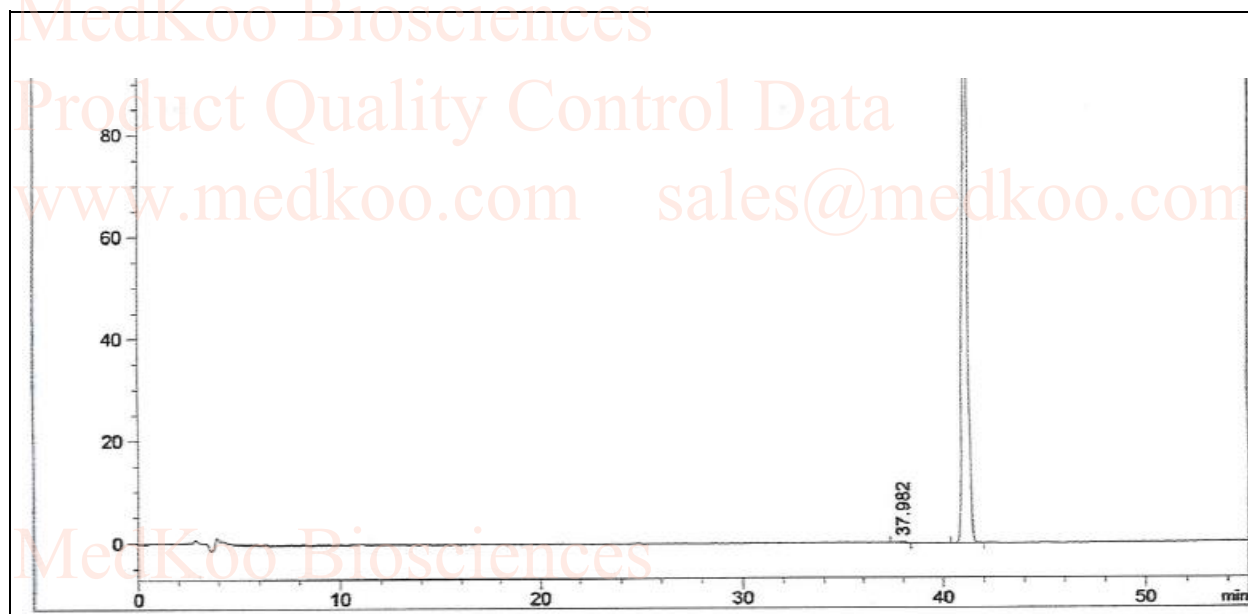
Exact Mass: 431.1515

Molecular Weight: 431.51



GLX315322 HPLC Analysis Report

Acq. Operator : System
Instrument : Instrument 1
Acq. Method : E:\WM\15-36-15.M
Analysis Method : E:\WM\90520.M
Sequence : 2
Local : Vial 92
Injection volume : 20.0 uL
Additional info : Peak(s) manually integrated

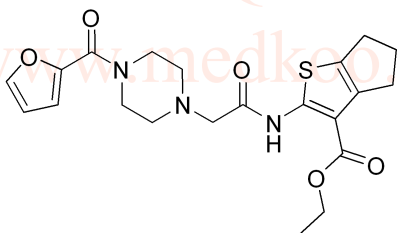


Area Percent Report

Sort By : Signal
Multiplier 1.0000
Dilution 1.0000
Use Multiplier \$ Dilution Factor with ISTDs

Signal 1: VWD1 A, 254 nm

Peak #	RetTime [min]	Type	Width [min]	Area [mAU * s]	Height [mAU]	Area %
1	37.982	MM R	0.4671	9.10113	3.24712e-1	0.4720
2	41.129	BBA	0.3426	1919.03467	93.34884	99.5280
Total				1928.13580		

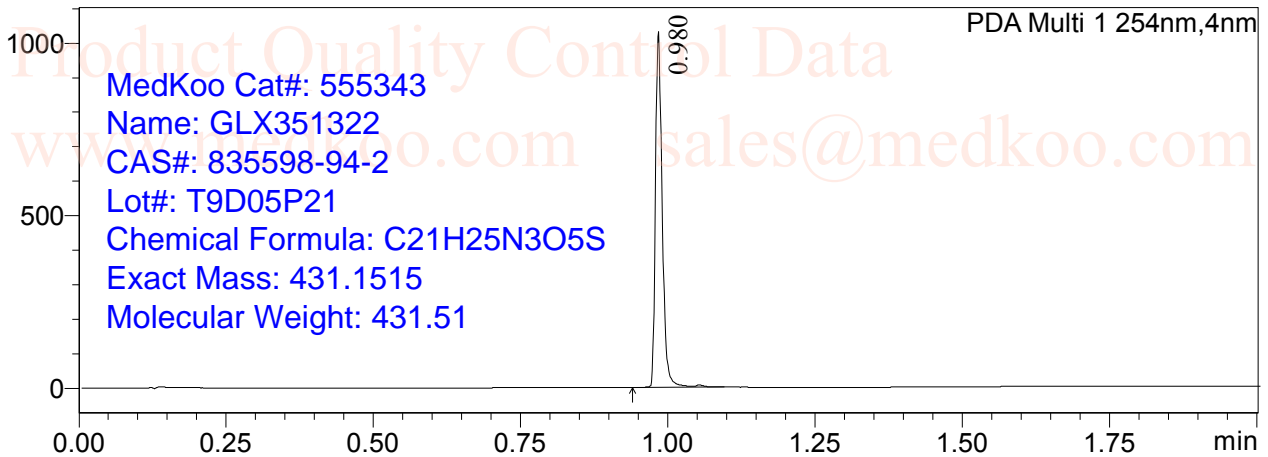


MedKoo Cat#: 555343
Name: GLX351322
CAS#: 835598-94-2
Lot#: T9D05P21
Chemical Formula: C₂₁H₂₅N₃O₅S
Exact Mass: 431.1515
Molecular Weight: 431.51

GLX315322 LC/MS Analysis Report

Acquired by : System Administrator
Sample Name : LCMS93-PH-ABI-D008-034-0-1(0520-H228)1T
Injection Volume : 0.6
Data File : LCMS93-PH-ABI-D008-034-0-1(0520-H228)1T.lcd
Method File : ACN-Water-0.05%TFA-5%B-1.0-2MIN(90-900).lcm
Report Format File : LCMS-PDA+MS.Isr
Comment : Mobile phase A:Water/0.05%TFA

mAU <Chromatogram>



MS Spectrum

Retention time: 0.980
Spectrum Mode:Single 0.980(125) Base Peak:432.25(361251)
BG Mode:None Segment 1 - Event 1

