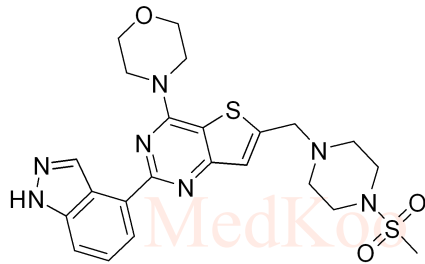


Pictilisib (GDC-0941) HNMR Analysis, Solvent: DMSO-d6



MedKoo Cat#: 201395

Name: Pictilisib

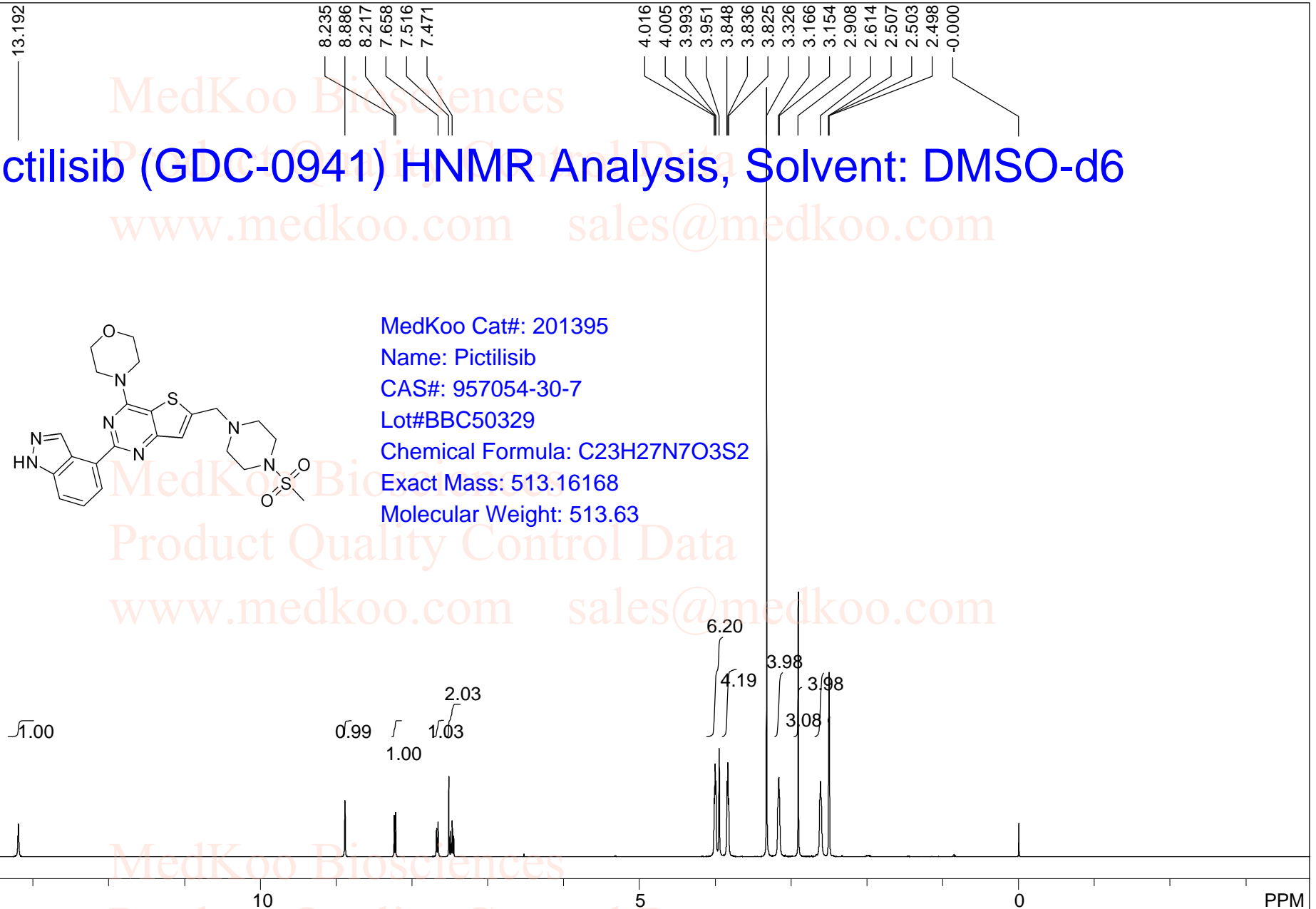
CAS#: 957054-30-7

Lot#BBC50329

Chemical Formula: C₂₃H₂₇N₇O₃S₂

Exact Mass: 513.16168

Molecular Weight: 513.63

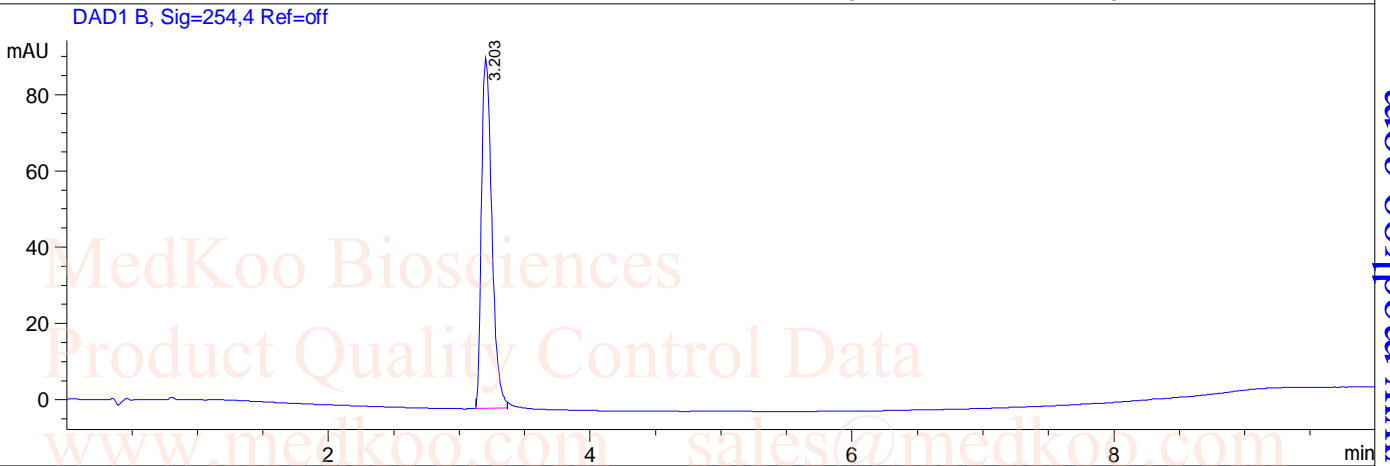
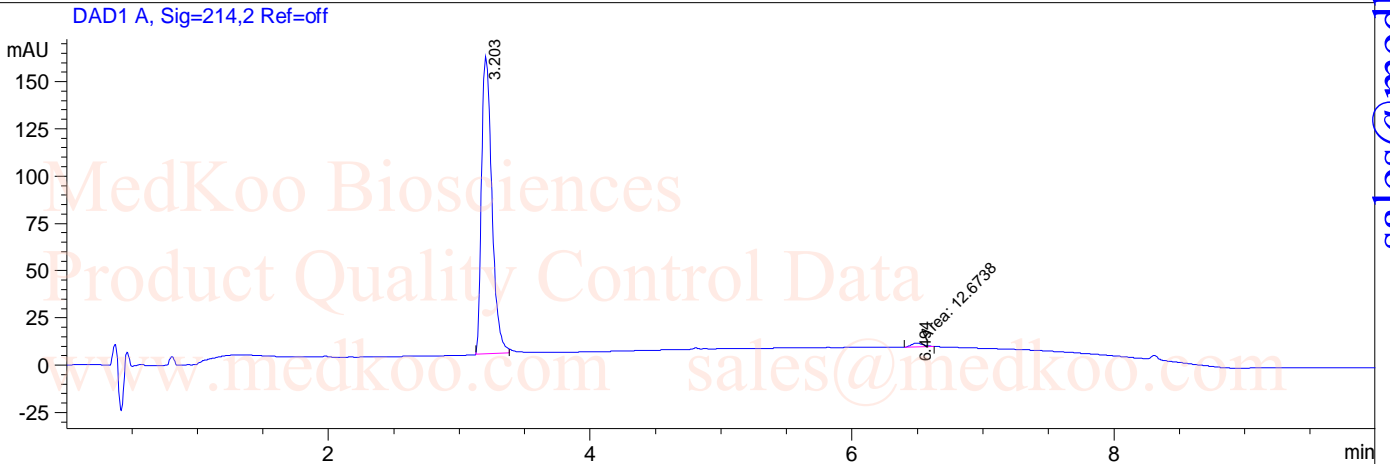


spect, DMSO,							
F1: 400.132	F2: 1.000	SW1: 8013		OF1: 2468.9		PTS1d: 65536	
EX: zg30		PW: 14.8 usec	PD: 1.0 sec	NA: 16	LB: 0.0		Nuts - \$pdata

Pictilisib (GDC-0941) HPLC Analysis

Sample Name : 00329-SM
Acq. Operator : 8
Spec. Reported : Integration

Seq. Line : 0
Location : P1-A-08
Inj : 0
Inj Volume : 4 ul

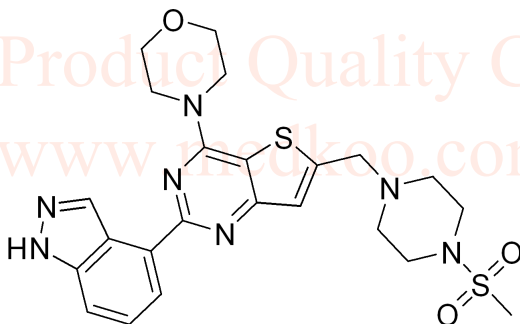


Integration Results for DAD1 A, Sig=214,2 Ref=off

RetTim	Width	Area	Height	Area%
3.20	0.09	869.59	157.35	98.56
6.49	0.10	12.67	2.05	1.44

Integration Results for DAD1 B, Sig=254,4 Ref=off

RetTim	Width	Area	Height	Area%
3.20	0.09	505.90	91.86	100.00



MedKoo Cat#: 201395

Name: Pictilisib

CAS#: 957054-30-7

Lot#BBC50329

Chemical Formula: C₂₃H₂₇N₇O₃S₂

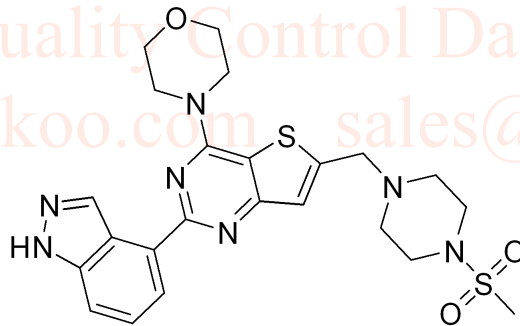
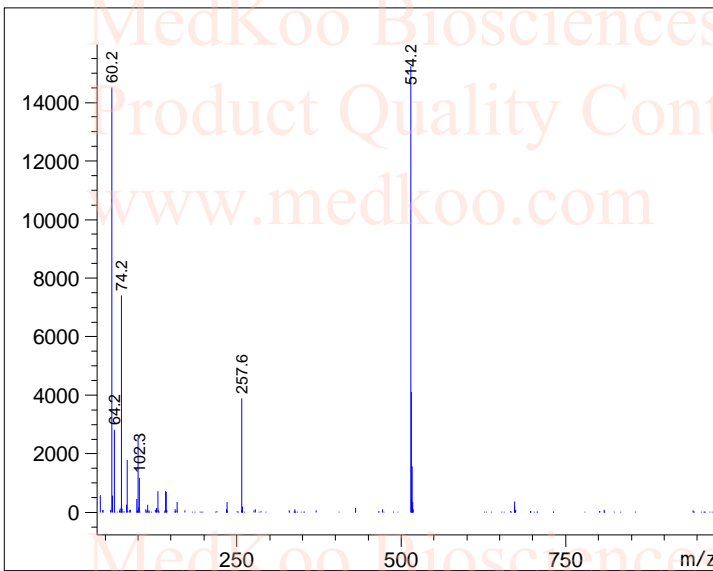
Exact Mass: 513.16168

Molecular Weight: 513.63

Pictilisib (GDC-0941) MS analysis

Sample Name : Z
Acq. Operator : 8
Spec. Reported : MS

Seq. Line : 0
Location : P2-D-07
Inj : 0
Inj Volume : 1.8 ul



MedKoo Cat#: 201395

Name: Pictilisib

CAS#: 957054-30-7

Lot#BBC50329

Chemical Formula: C₂₃H₂₇N₇O₃S₂

Exact Mass: 513.16168

Molecular Weight: 513.63