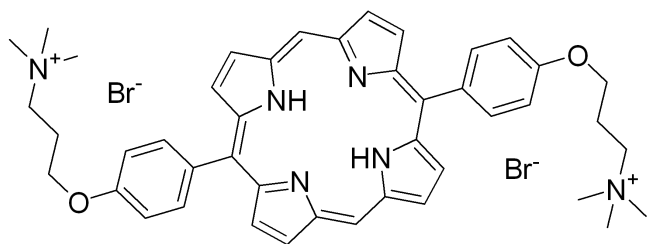


Exeporfinium bromide HNMR Analysis, Solvent: DMSO



Medkoo Biosciences
Product Quality Control Data
Sales@medkoo.com

MedKoo Cat#: 414172

Name: Exeporfinium bromide

CAS#: 943326-71-4 (bromide)

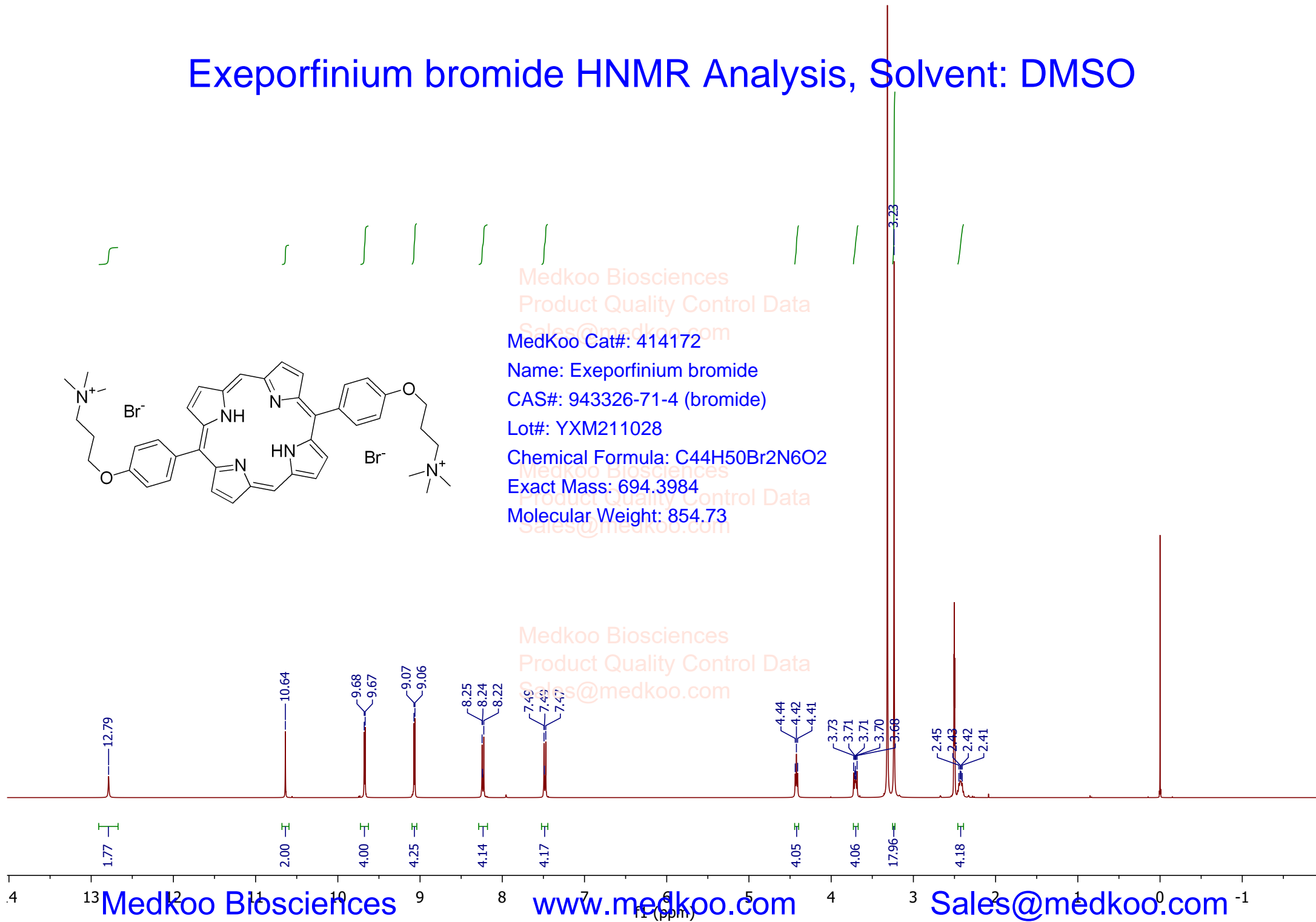
Lot#: YXM211028

Chemical Formula: C₄₄H₅₀Br₂N₆O₂

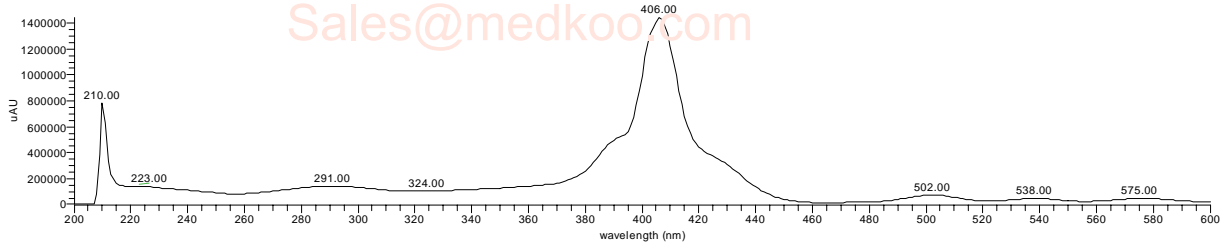
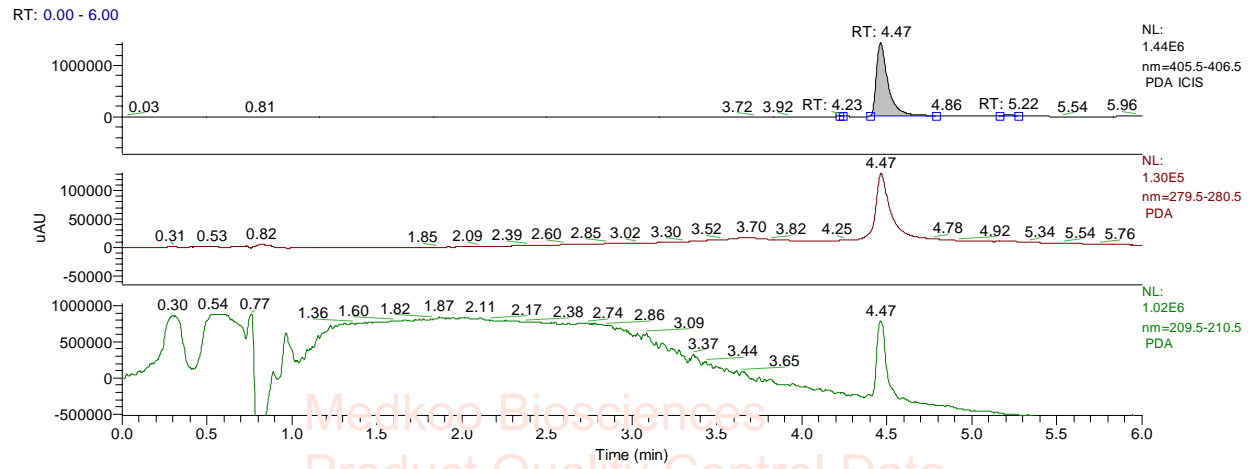
Exact Mass: 694.3984

Molecular Weight: 854.73

Medkoo Biosciences
Product Quality Control Data
Sales@medkoo.com



Exeporfinium bromide HPLC Analysis



PEAK LIST

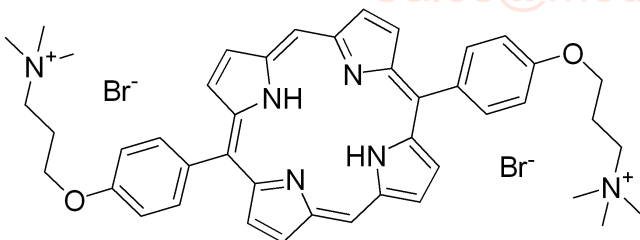
EXE-Br_211025141357.RAW

RT: 0.00 - 6.00

Number of detected peaks: 3

Apex

| RT | Start RT | End RT | Height | %Height | Area | %Area |
|------|----------|--------|----------|---------|---------|-------|
| 4.23 | 4.22 | 4.24 | 2314.4 | 0.16 | 2427.78 | 0.03 |
| 4.47 | 4.4 | 4.79 | 1431766 | 98.06 | 6962698 | 98.62 |
| 5.22 | 5.16 | 5.27 | 26071.67 | 1.79 | 94768.3 | 1.34 |



MedKoo Cat#: 414172

Name: Exeporfinium bromide

CAS#: 943326-71-4 (bromide)

Lot#: YXM211028

Chemical Formula: C₄₄H₅₀Br₂N₆O₂

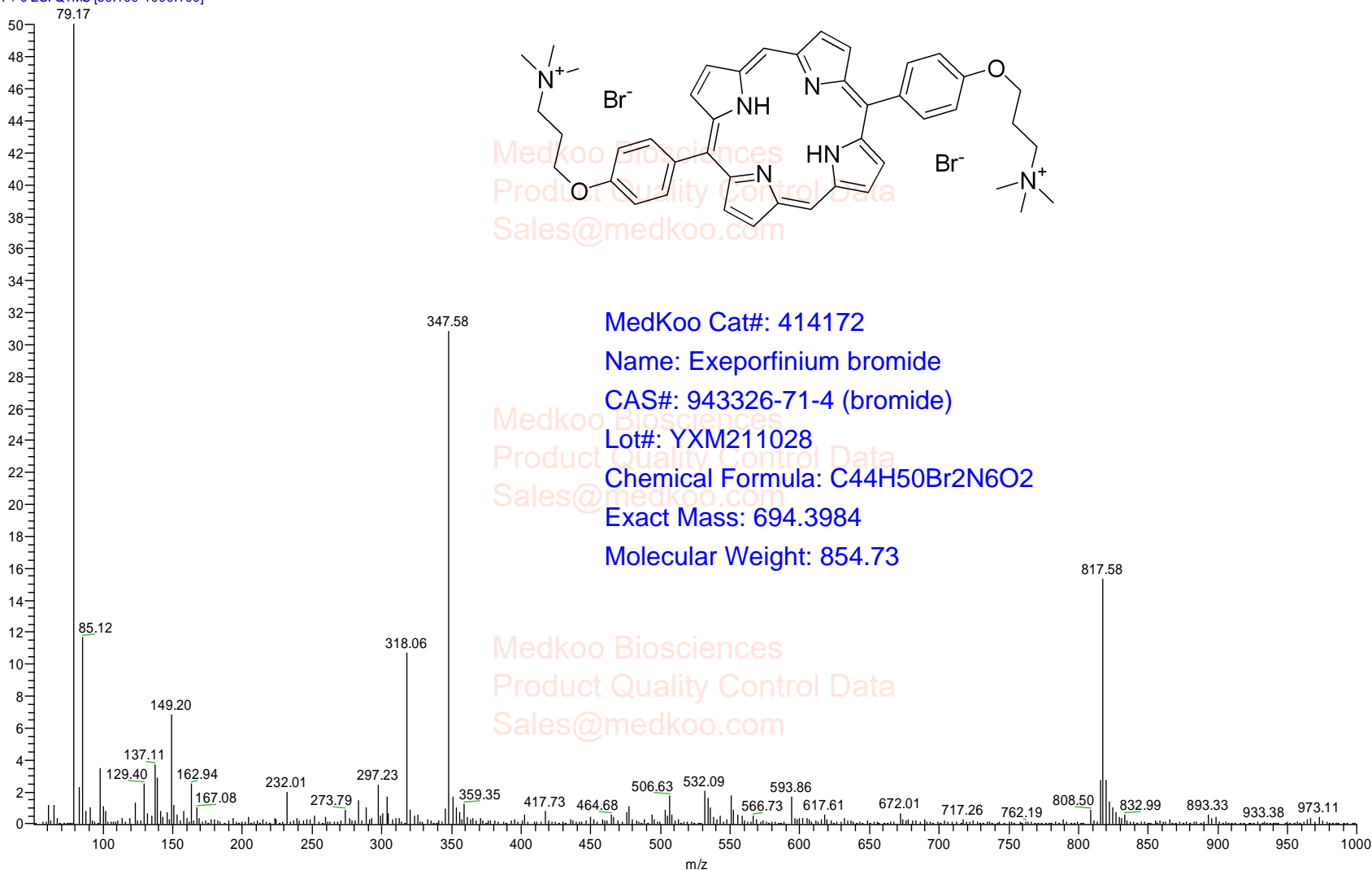
Exact Mass: 694.3984

Molecular Weight: 854.73

Exeporfinium bromide MS Analysis

Exeporfinium bromide, MS, [M]⁺⁺ 347.58

347 #1 RT: 0.00 AV: 1 NL: 6.18E7
T: + c ESI Q1MS [50.100-1000.100]



MedKoo Cat#: 414172

Name: Exeporfinium bromide

CAS#: 943326-71-4 (bromide)

Lot#: YXM211028

Chemical Formula: C₄₄H₅₀Br₂N₆O₂

Exact Mass: 694.3984

Molecular Weight: 854.73