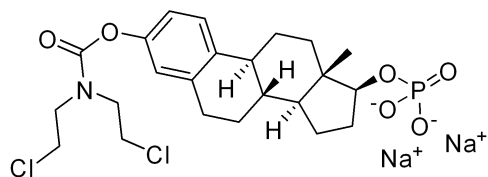
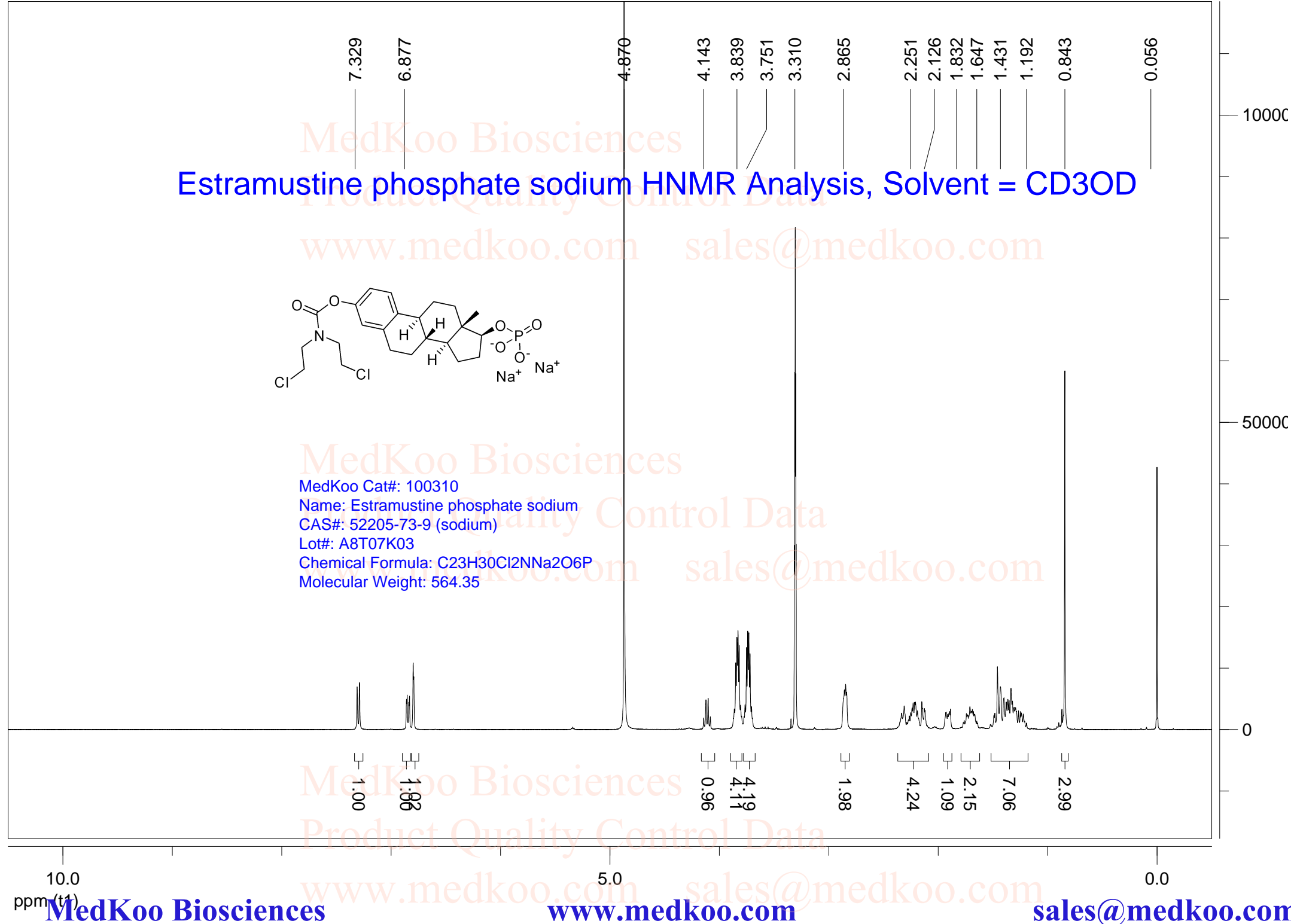


Estramustine phosphate sodium HNMR Analysis, Solvent = CD3OD

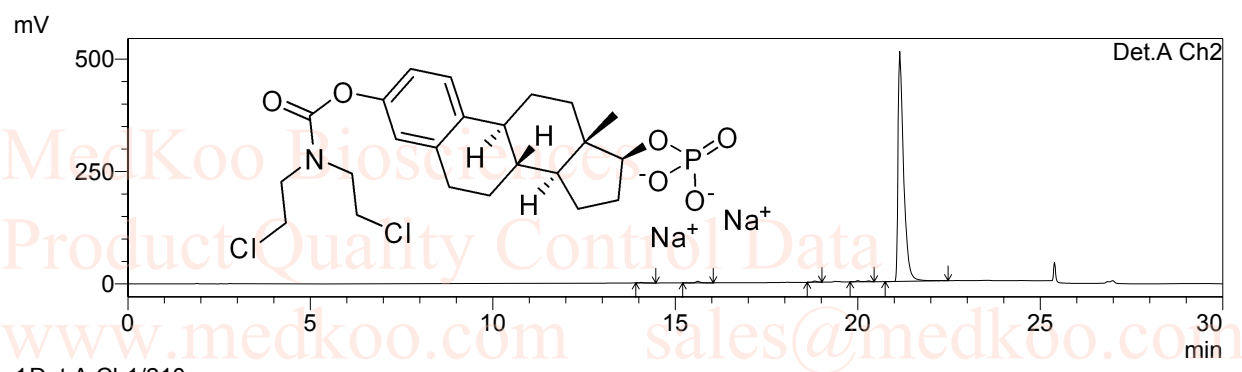
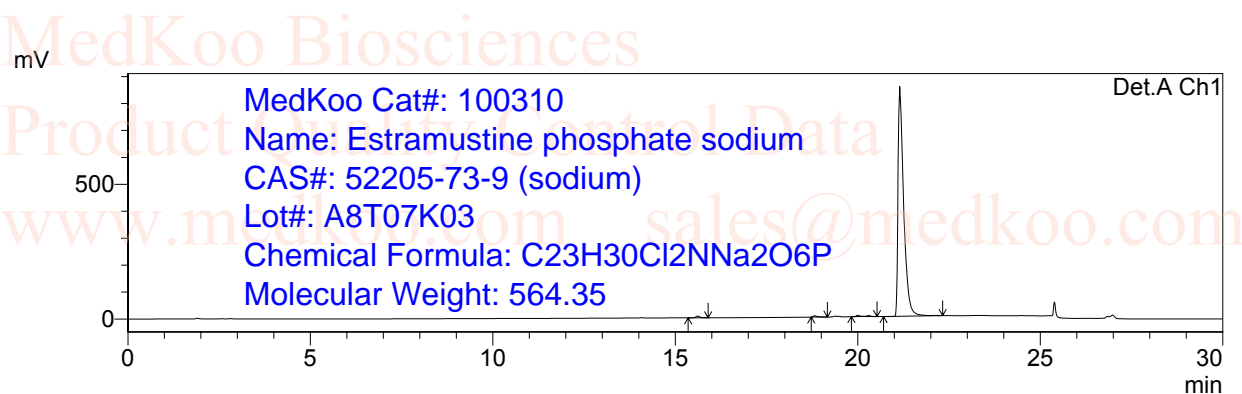


MedKoo Cat#: 100310
Name: Estramustine phosphate sodium
CAS#: 52205-73-9 (sodium)
Lot#: A8T07K03
Chemical Formula: C₂₃H₃₀Cl₂NNa₂O₆P
Molecular Weight: 564.35



Estramustine phosphate sodium HPLC Analysis

Column : Inertil ODS-3, 5um 4.6*150mm
 Mobile phase : Solvent A: H2O(0.05%H3PO4) Solvent B:ACN(0.05%H3PO4)
 Temperature : 40 °C
 Flow rate : 1mL/min
 Run time : 3min gradient(20%B), 12min gradient (20%-50%B), 5min gradient (50%-95%B),3 min(95%B),th
 Detector : UV
 Wavelength : 220/254 nm
 User name : 52205-73-9
 Notebook page :
 Sample description : 1mg/ml in ACN
 Injection Volume : 52205-73-9



1Det.A Ch1/210nm
 2Det.A Ch2/220nm

PeakTable

Detector A Ch1 210nm

Peak#	Ret. Time	Area	Area %	Theoretical Plate#
1	15.608	49502	0.530	87498.051
2	18.813	35548	0.381	134404.990
3	19.997	59196	0.634	201373.437
4	21.147	9191009	98.455	89993.475
Total		9335255	100.000	

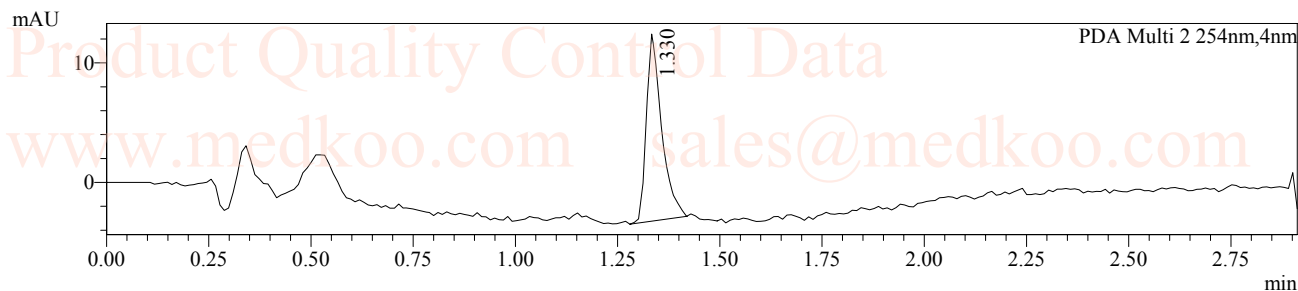
PeakTable

Detector A Ch2 220nm

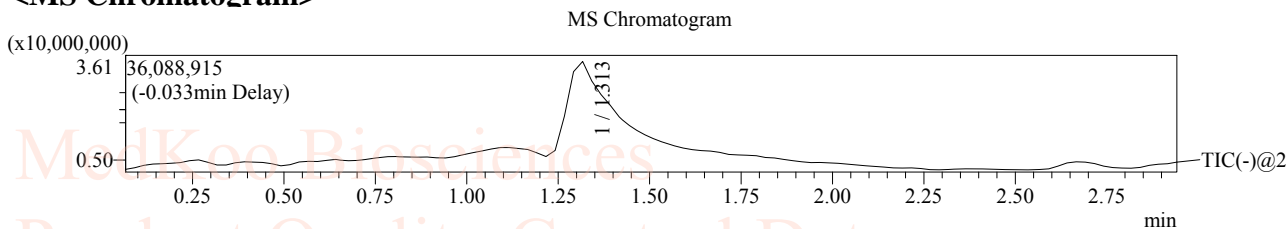
Peak#	Ret. Time	Area	Area %	Theoretical Plate#
1	14.065	6469	0.117	126824.048
2	15.608	27304	0.493	86591.823
3	18.814	19894	0.360	130438.260
4	19.996	31835	0.575	202439.251
5	21.147	5447397	98.455	92747.568
Total		5532900	100.000	

Estramustine phosphate sodium LC/MS Analysis

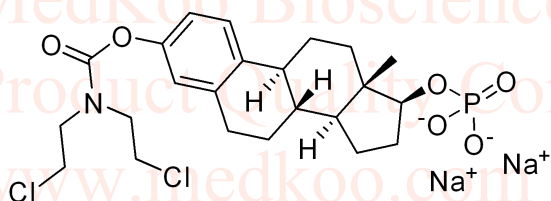
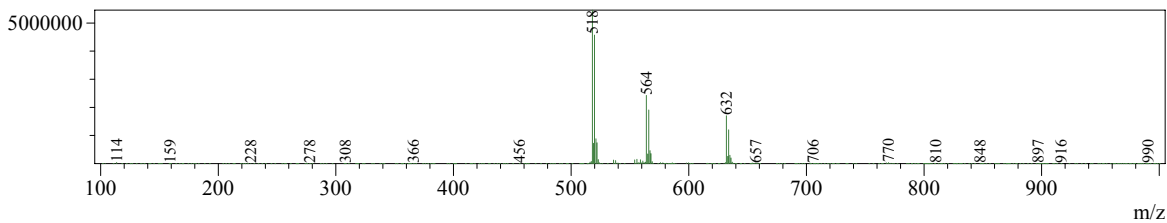
LC-MS condition
Column : Chromolith SpeedROD ,RP-18e,50*4.6mm LCMS-002
Mobile Phase : A: H2O(0.05%FA)
 B: CH3CN
Temperature : 35°C
Flow rate : 2.5mL/min
Run time : 0.6min@15%B,3.2min gradient(15-95% B), then0.5min@95% B,then0.7min@15% B
Injection volume : 5 uL
Detector : UV 205/210nm
Mass range : 100-1000
Scan : Postive/Negative
User Name : 52205-73-9
Data Filename : 52205-73-9.lcd
Batch Filename : 20180703.lcb



<MS Chromatogram>



Peak#:1 R.Time:1.313(Scan#:100)
MassPeaks:376
Spectrum Mode:Averaged 1.275-1.325(98-102)
BG Mode:Calc Segment 1 - Event 2



MedKoo Cat#: 100310

Name: Estramustine phosphate sodium

CAS#: 52205-73-9 (sodium)

Lot#: A8T07K03

Chemical Formula: C23H30Cl2NNa2O6P

Molecular Weight: 564.35