

# Enasidenib (AG-221) HNMR Analysis, Solvent: DMSO

MedKoo Cat#: 206438

Name: Enasidenib (AG-221)

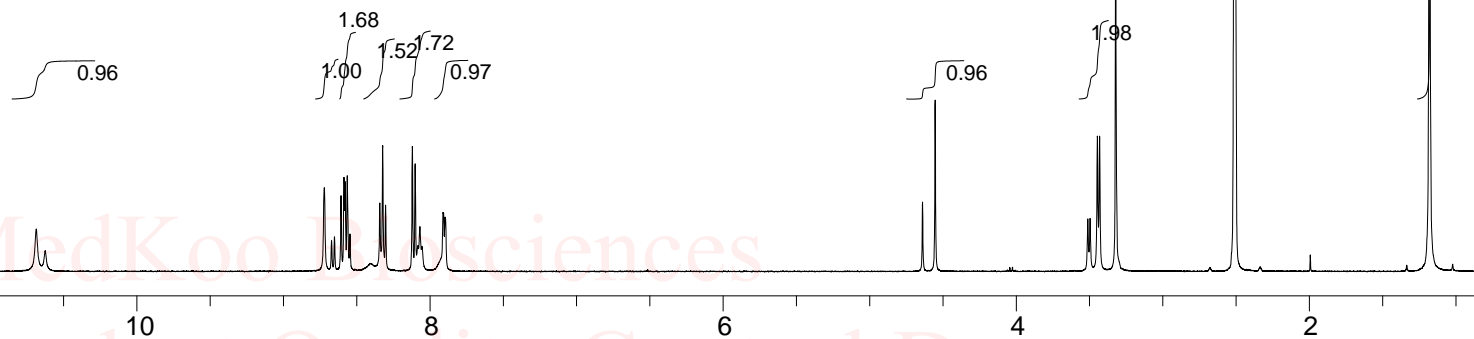
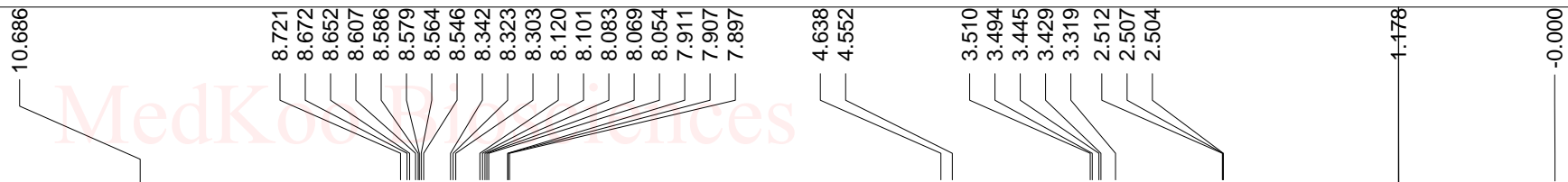
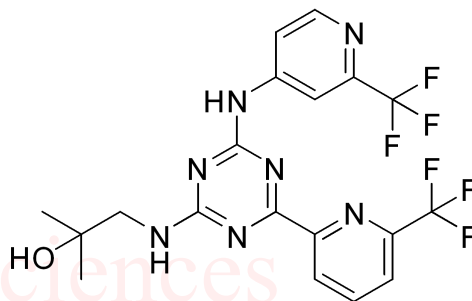
CAS#: 1446502-11-9 (free base)

Lot#: A9T09K02

Chemical Formula: C<sub>19</sub>H<sub>17</sub>F<sub>6</sub>N<sub>7</sub>O

Exact Mass: 473.13988

Molecular Weight: 473.38



1446502-11-9, DMSOF1: 400.130

F2: 1.000

SW1: 8224

EX: zg30

PW: 15.0 usec

PD: 1.0 sec

NA: 8

LB: 0.3

MedKoo Biosciences

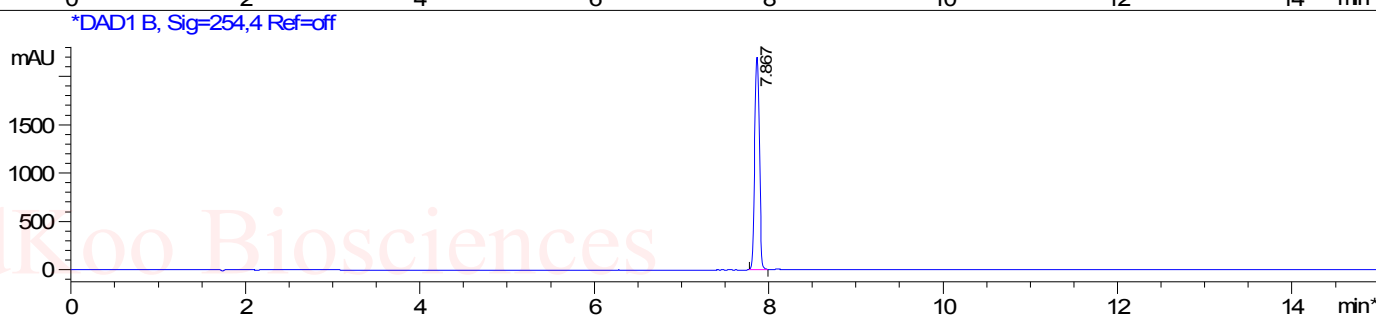
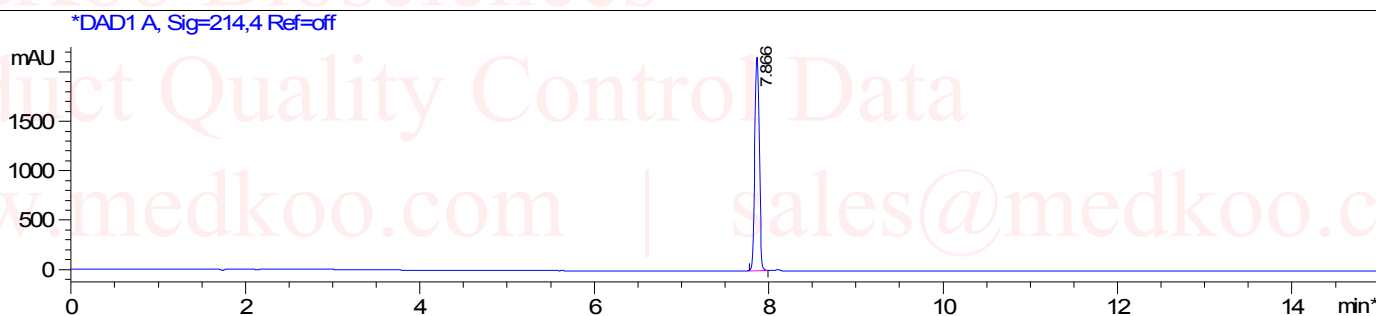
www.medkoo.com

sales@medkoo.com

# Enasidenib HPLC Analysis

Sample Name : 1446502-11-9

Method Info : Mobile Phase: A: water (10mM Ammonium hydrogen carbonate) B: ACN  
Gradient: 5%-95% B in 8 min, 95%B for 7min.  
Flow Rate: 1.0mL/min  
Column: XBridge C18, 4.6\*150mm, 3.5um  
Oven Temperature: 40 C  
Mass Range: 110-900 UV: 214nm;254nm



Integration Results for DAD1 A, Sig=214,4 Ref=off

RetTim	Width	Area	Height	Area%
7.87	0.06	7814.16	2161.16	100.00

Integration Results for DAD1 B, Sig=254,4 Ref=off

RetTim	Width	Area	Height	Area%
7.87	0.06	8260.28	2201.15	100.00

MedKoo Cat#: 206438

Name: Enasidenib (AG-221)

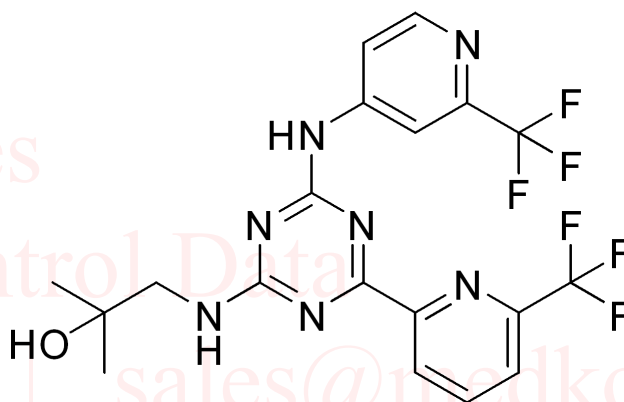
CAS#: 1446502-11-9 (free base)

Lot#: A9T09K02

Chemical Formula: C<sub>19</sub>H<sub>17</sub>F<sub>6</sub>N<sub>7</sub>O

Exact Mass: 473.13988

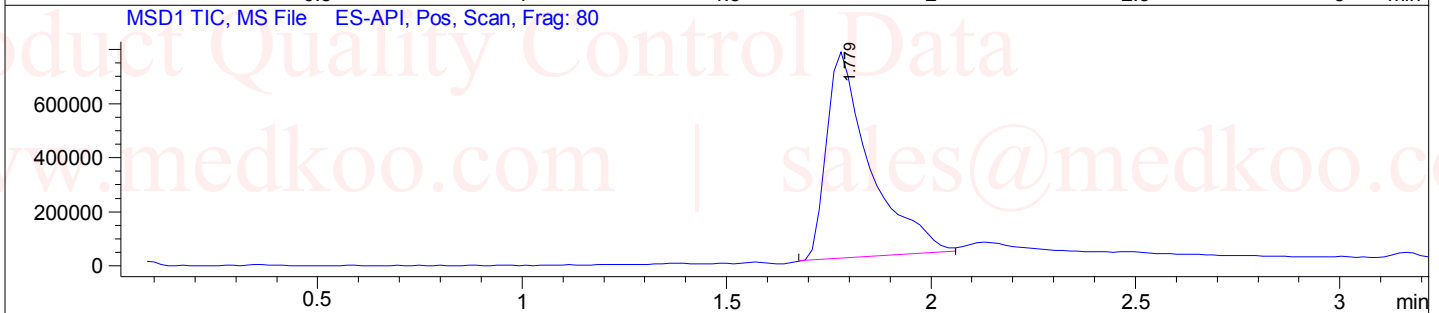
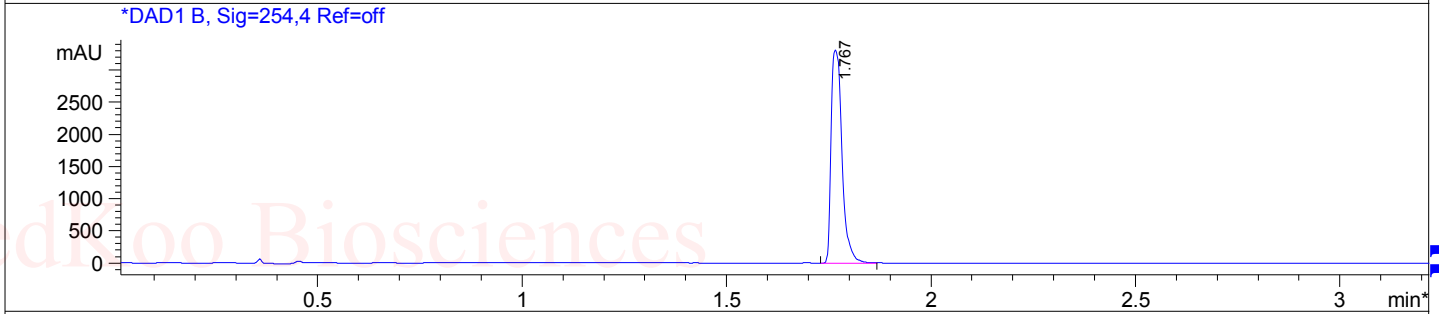
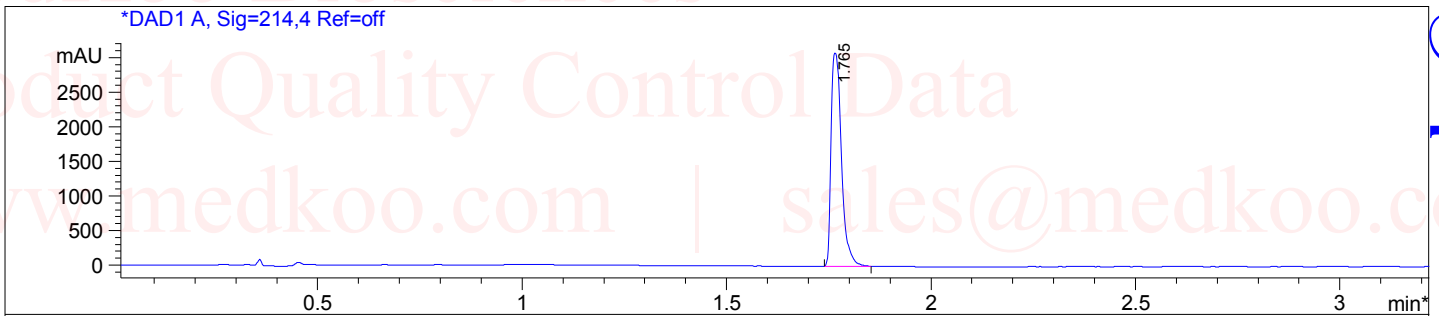
Molecular Weight: 473.38



# Enasidenib MS Analysis

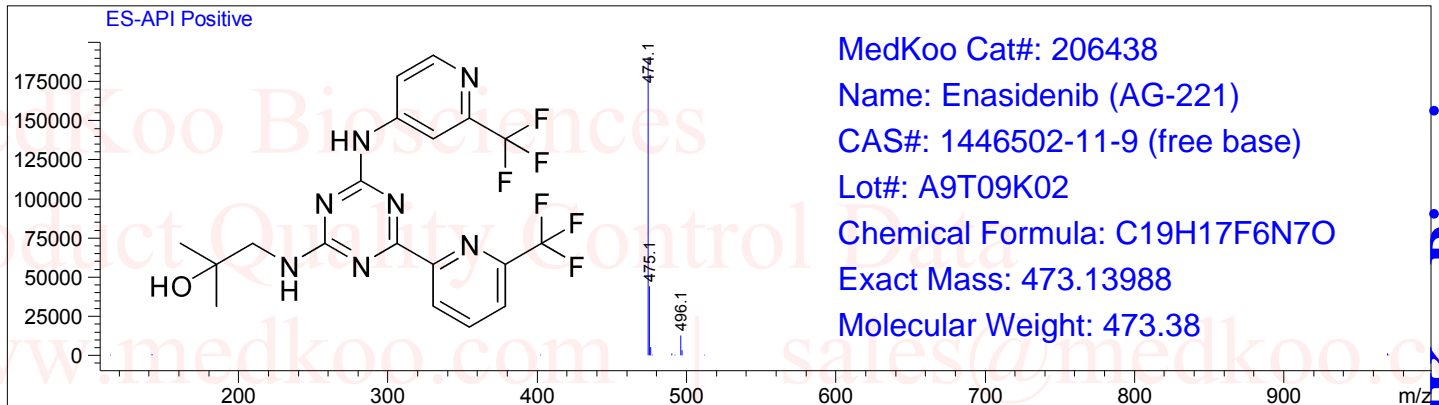
Sample Name : 1446502-11-9

Method Info : Column: XBridge (4.6x 50 mm, 3.5um)  
Mobile phase: H2O(10 mmol NH4HCO3 ) (A) / ACN(B)  
Elution program: Gradient from 10 to 95% of B in 1.4min at 1.8ml/min  
Temperature: 50 °C  
Detection: UV (214 , 4 nm) and MS (ESI, Pos mode , 103 to 1000 amu)



Ret. Time: 1.78

<<<< POSITIVE SPECTRA >>>>



sales@medkoo.com

www.medkoo.com

MedKoo Biosciences