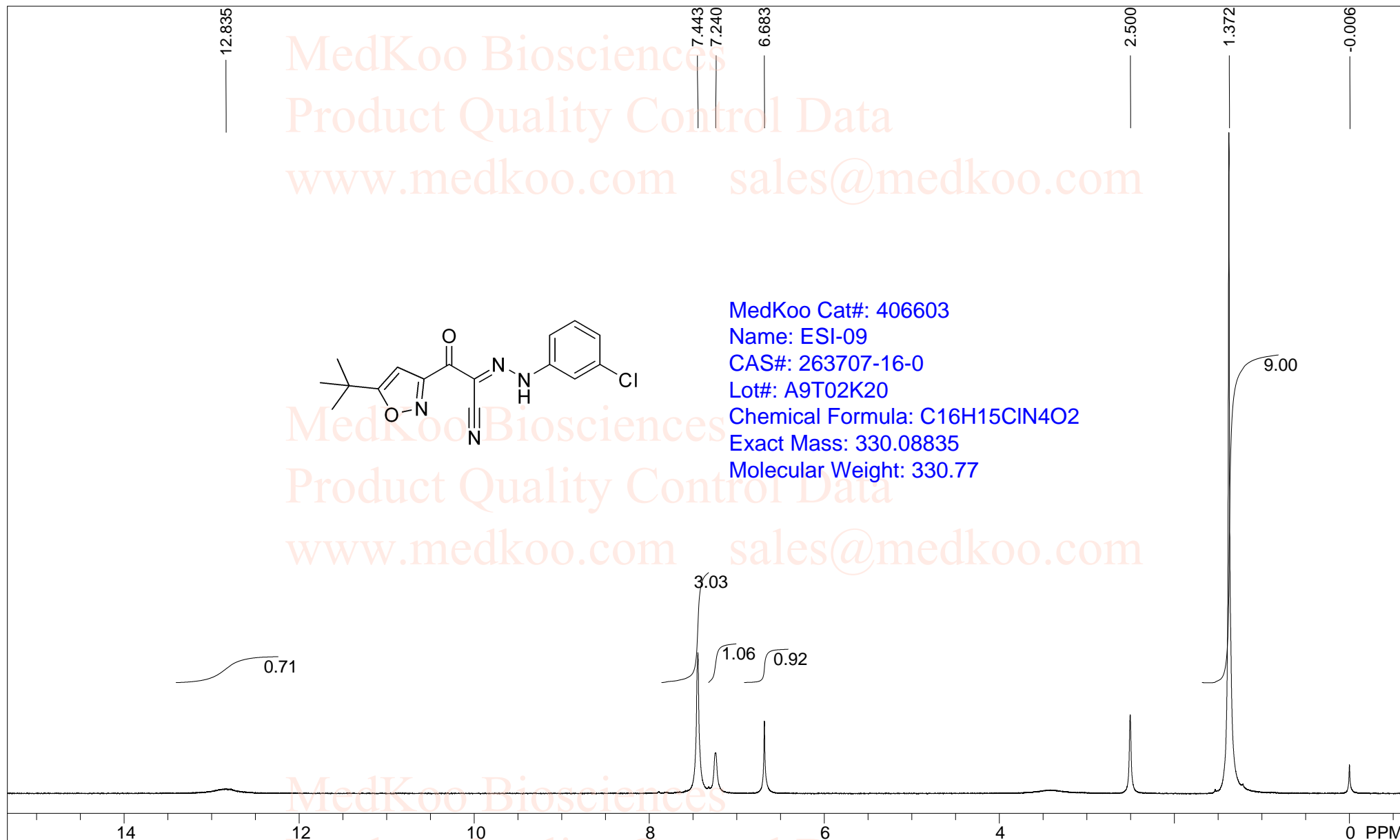


ESI-09 HNMR Analysis, solvent=DMSO-d6



MedKoo Cat#: 406603

Name: ESI-09

CAS#: 263707-16-0

Lot#: A9T02K20

Chemical Formula: C₁₆H₁₅ClN₄O₂

Exact Mass: 330.08835

Molecular Weight: 330.77

DMSO,

F1: 400.132

F2: 1.000

SW1: 8224

OF1: 2469.5

PTS1d: 65536

EX: zg30

PW: 15.0 usec

PD: 1.0 sec

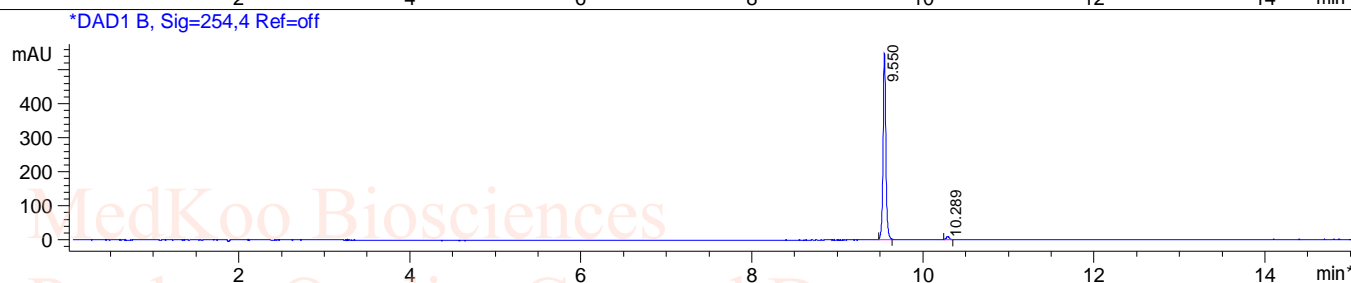
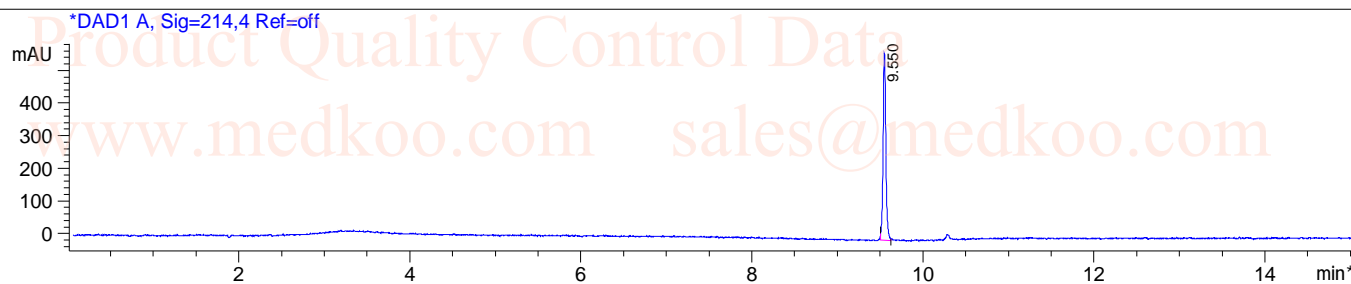
NA: 8

LB: 0.0

Nuts - \$pdata

ESI-09 HPLC Analysis

Sample Name : 263707-16-0
Acq. Method : D:\METHODS\2-POS-15MIN.M
Analysis Method : D:\METHODS\2-POS-15MIN.M
Sample Info : Easy-Access Method: '2-POS-15MIN'
Method Info : Mobile Phase : A:water(0.01%TFA) B:ACN(0.01%TFA)
GGradient
Time 0 7.5 15
B % 5 95 95
Flow Rate :1ml/min
Column :SUNFIRE, 150*4.6mm,3.5um

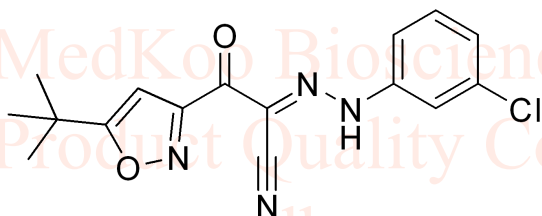


Integration Results for DAD1 A, Sig=214,4 Ref=off

RetTim	Width	Area	Height	Area%
9.55	0.03	1291.57	565.24	100.00

Integration Results for DAD1 B, Sig=254,4 Ref=off

RetTim	Width	Area	Height	Area%
9.55	0.03	1240.37	548.15	98.16
10.29	0.04	23.23	8.91	1.84



MedKoo Cat#: 406603

Name: ESI-09

CAS#: 263707-16-0

Lot#: A9T02K20

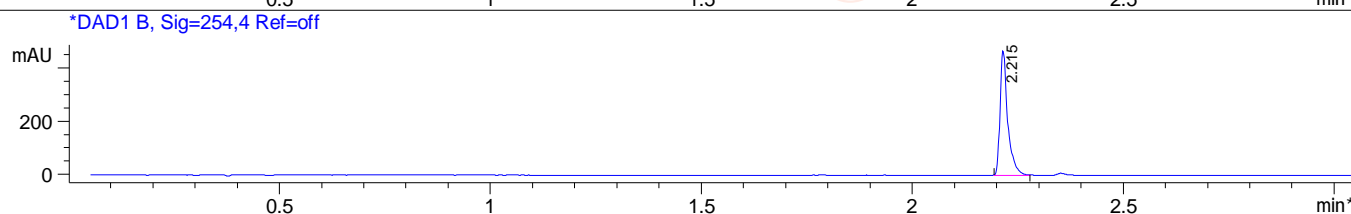
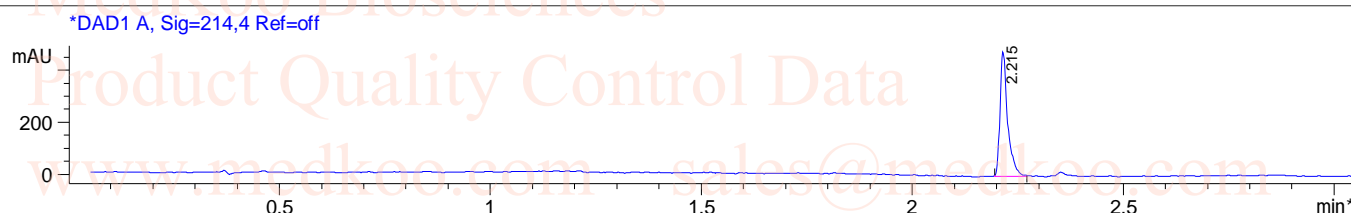
Chemical Formula: C₁₆H₁₅ClN₄O₂

Exact Mass: 330.08835

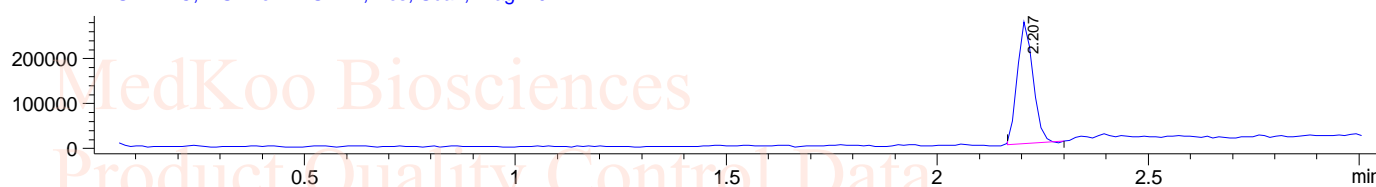
Molecular Weight: 330.77

ESI-09 LC/MS Analysis

Sample Name : 263707-16-0
Acq. Method : D:\METHODS\1-POS-3MIN.M
Analysis Method : D:\METHODS\1-POS-3MIN.M
Sample Info : Easy-Access Method: '1-POS-3MIN'
Method Info : Mobile Phase : A:water(0.01%TFA) B:ACN(0.01%TFA)
Gradient:5%B for 0.2min,increase to 95%B within 1.5min,95%B for 1.5min,
back to 5%B within 0.01min
Flow Rate :2ml/min
Column :Sunfire, 50*4.6mm,3.5um
Column Temperature:50C



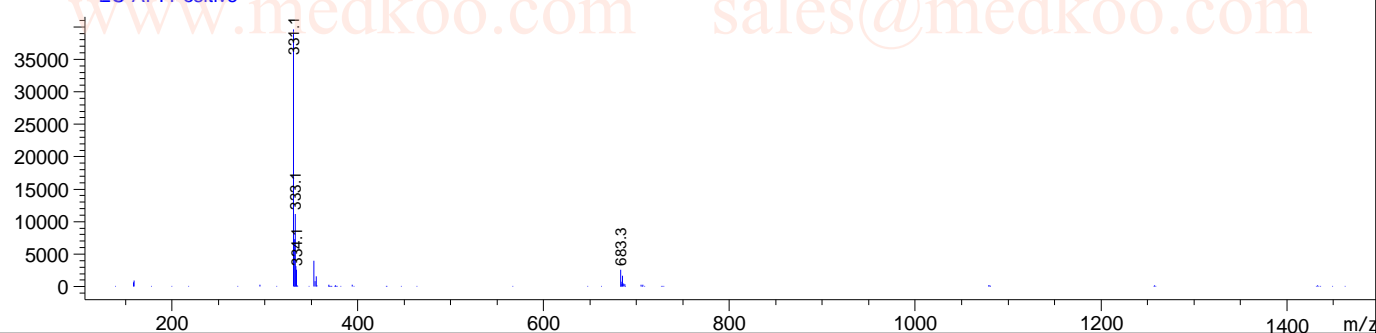
MSD1 TIC, MS File ES-API, Pos, Scan, Frag: 70



Ret. Time: 2.21

<<<< POSITIVE SPECTRA

ES-API Positive



MedKoo Cat#: 406603

Name: ESI-09

CAS#: 263707-16-0

Lot#: A9T02K20

Chemical Formula: C₁₆H₁₅ClN₄O₂

Exact Mass: 330.08835

Molecular Weight: 330.77