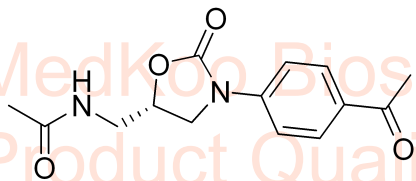


# Dup-721 HNMR Analysis, Solvent: DMSO

Product Quality Control Data

www.medkoo.com Sales@medkoo.com



MedKoo Cat#: 464747

Name: Dup-721

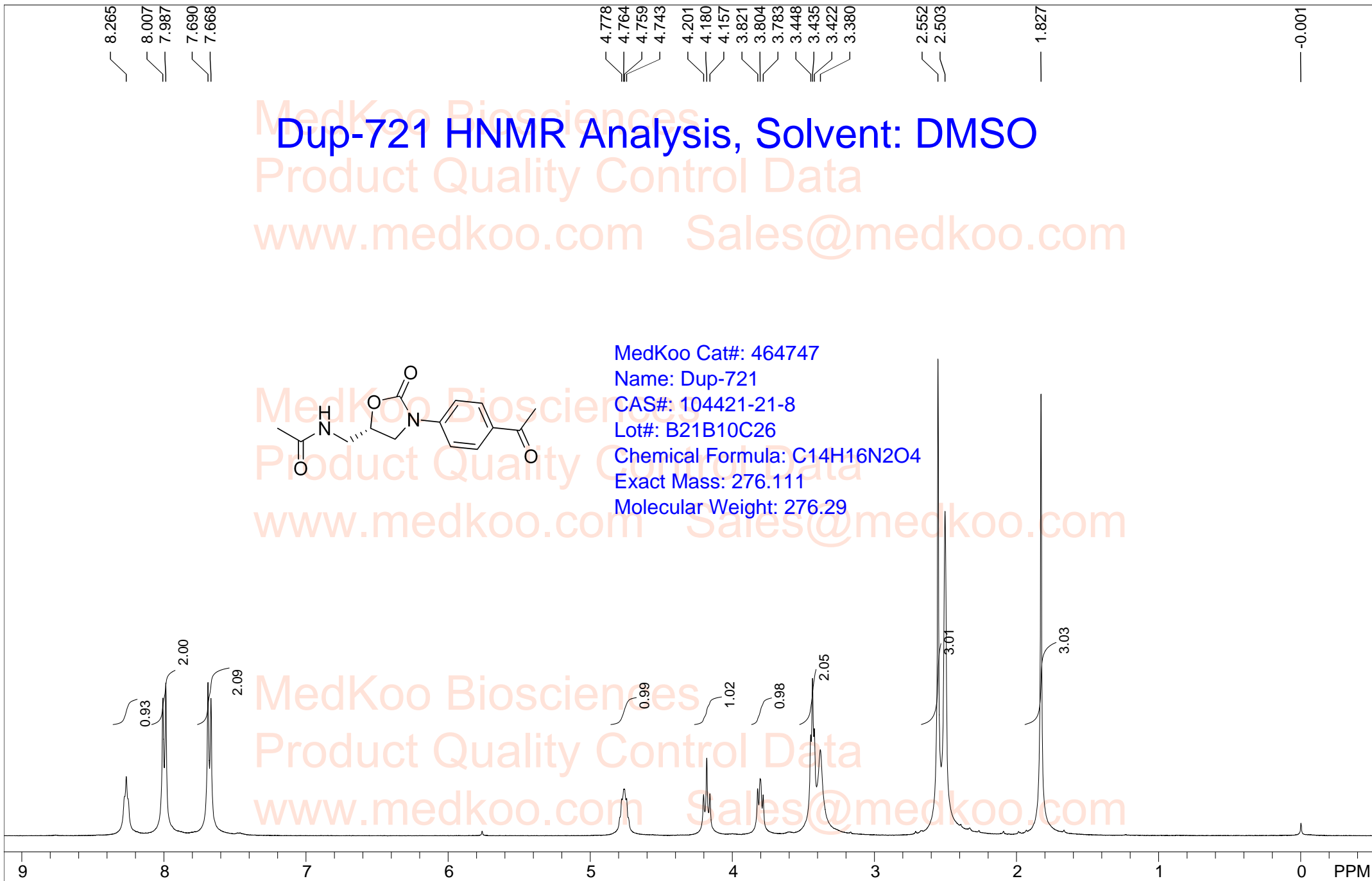
CAS#: 104421-21-8

Lot#: B21B10C26

Chemical Formula: C<sub>14</sub>H<sub>16</sub>N<sub>2</sub>O<sub>4</sub>

Exact Mass: 276.111

Molecular Weight: 276.29

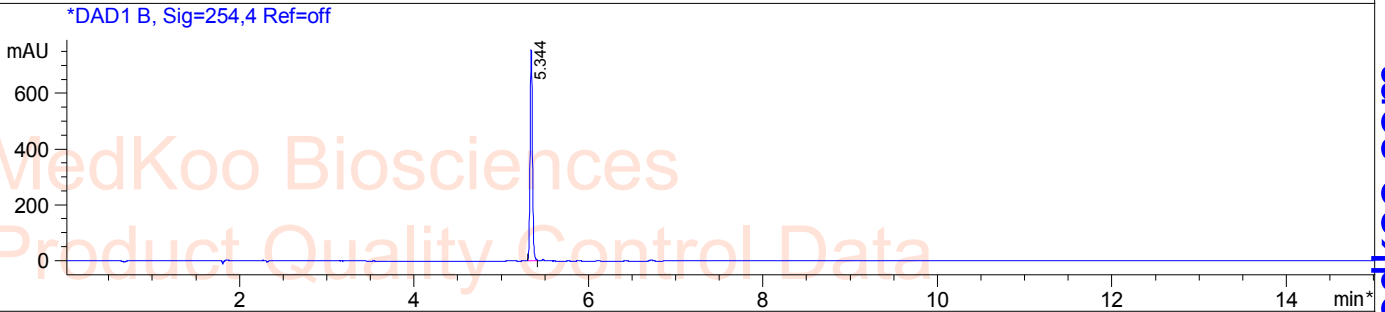
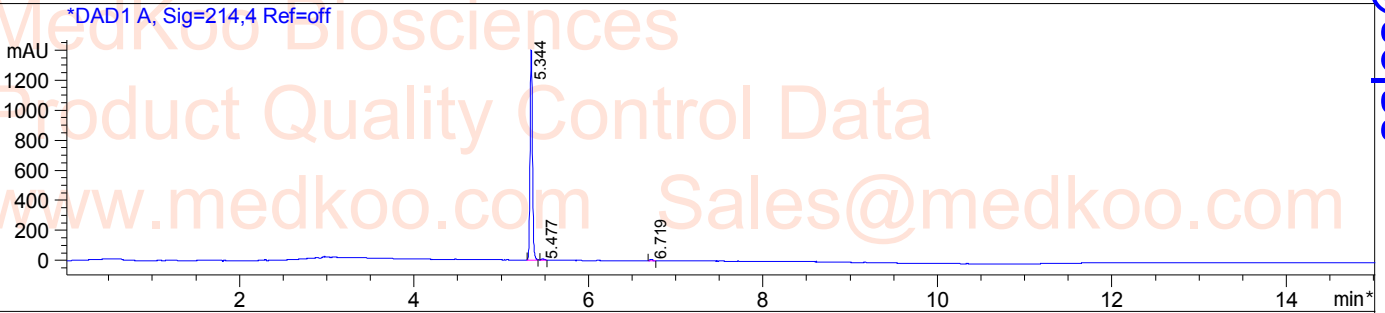


DMSO

F1: 400.130	F2: 1.000	SW1: 8224	PD: 1.000	OF1: 2469.2	PTS1d: 32768
EX: zg30	MedKoo Biosciences	PW: 4.000 usec	www.medkoo.com	LB: 0.3	sales@medkoo.com

# Dup-721 HPLC Analysis

Sample Name : 104421-21-8  
Method Info : Mobile Phase : A:water(0.01%TFA) B:ACN(0.01%TFA)  
Gradient:5%B increase to 95%B within 9min,95%B for 6min  
Flow Rate :1ml/min  
Column :Sunfire C18 150\*4.6mm,3.5um  
Column Temperature:45C  
Detection:UV(214nm,4nm) and MS(ESI,POS Mode,110-1300amu)

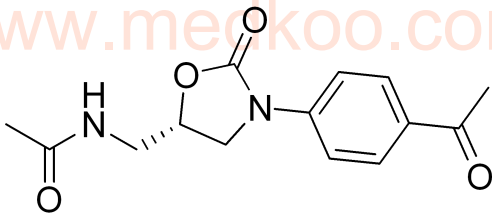


Integration Results for DAD1 A, Sig=214,4 Ref=off

RetTim	Width	Area	Height	Area%
5.34	0.03	2642.39	1396.93	98.52
5.48	0.03	17.05	8.16	0.64
6.72	0.03	22.53	11.02	0.84

Integration Results for DAD1 B, Sig=254,4 Ref=off

RetTim	Width	Area	Height	Area%
5.34	0.03	1416.90	755.70	100.00



MedKoo Cat#: 464747

Name: Dup-721

CAS#: 104421-21-8

Lot#: B21B10C26

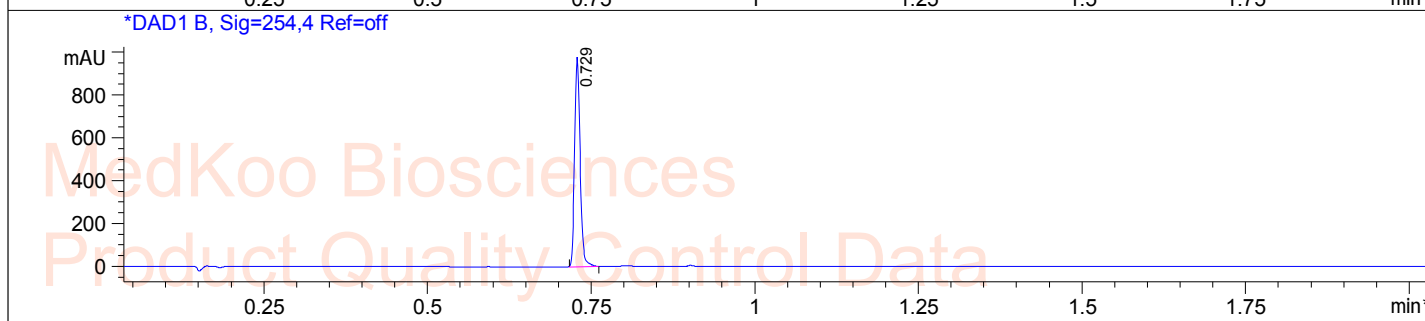
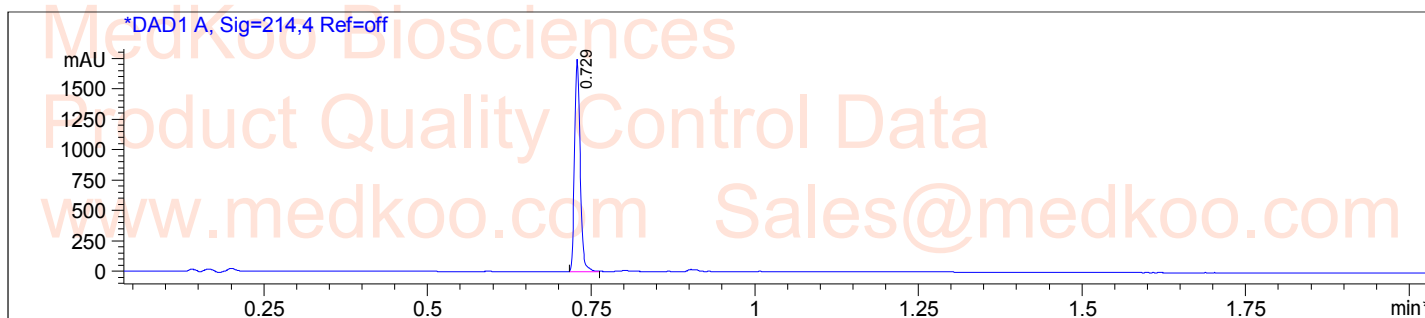
Chemical Formula: C<sub>14</sub>H<sub>16</sub>N<sub>2</sub>O<sub>4</sub>

Exact Mass: 276.111

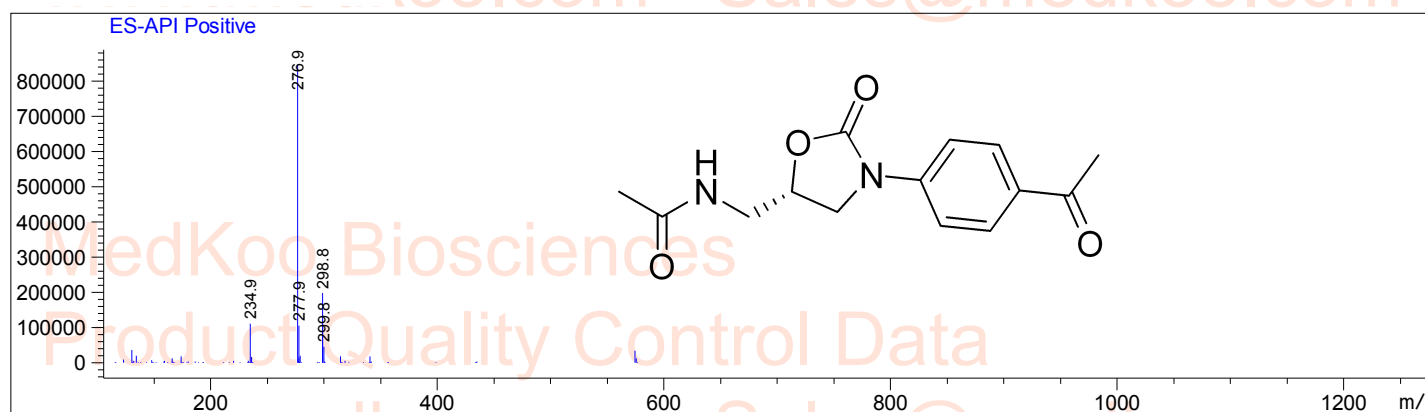
Molecular Weight: 276.29

# Dup-721 LC/MS Analysis

Sample Name : 104421-21-8  
Method Info : Mobile Phase : A:water(0.01%TFA) B:ACN(0.01%TFA)  
Gradient:5%B increase to 95%B within 1min,95%B for 1min  
Flow Rate :1.6ml/min  
Column :AaILENT Proshell 2.7um, 3.0mm\*30mm  
Column Temperature:50C  
Detection:UV(214nm,4nm) and MS(ESI,POS Mode,110-1300amu)



Ret. Time: 0.73



MedKoo Cat#: 464747  
Name: Dup-721  
CAS#: 104421-21-8  
Lot#: B21B10C26  
Chemical Formula: C<sub>14</sub>H<sub>16</sub>N<sub>2</sub>O<sub>4</sub>  
Exact Mass: 276.111  
Molecular Weight: 276.29