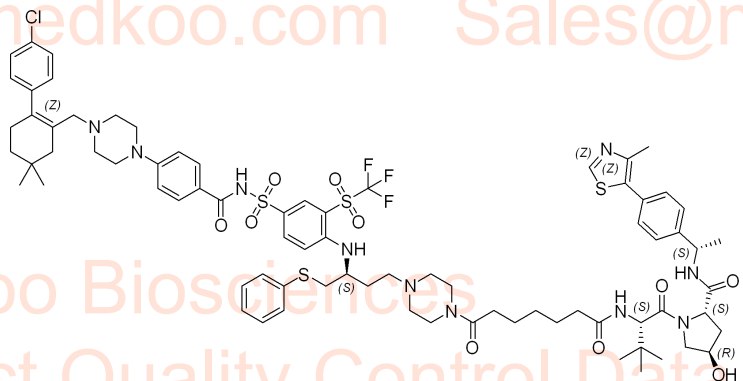


7.962 7.959 7.940 7.935 7.811 7.788 7.729 7.707 7.444 7.423 7.387 7.366 7.344 7.340 7.323 7.287 7.268 7.248 7.193 7.175 7.157 7.130 7.109 6.995 6.973 6.892 6.862 6.841 5.110 5.101 4.935 4.917 4.898 4.525 4.501 4.441 4.421 4.401 4.275 4.075 4.069 3.600 3.340 3.299 3.279 3.262 3.230 2.508 2.504 2.499 2.454 2.398 2.388 2.378 2.335 2.292 2.272 2.235 2.218 2.200 2.140 2.124 2.104 2.088 2.077 2.033 1.990 1.823 1.812 1.801 1.791 1.780 1.771 1.758 1.502

# DT-2216 isomer HNMR Analysis, Solvent: DMSO

www.medkoo.com Sales@medkoo.com



MedKoo Biosciences  
Product Quality Control Data  
www.medkoo.com Sales@medkoo.com

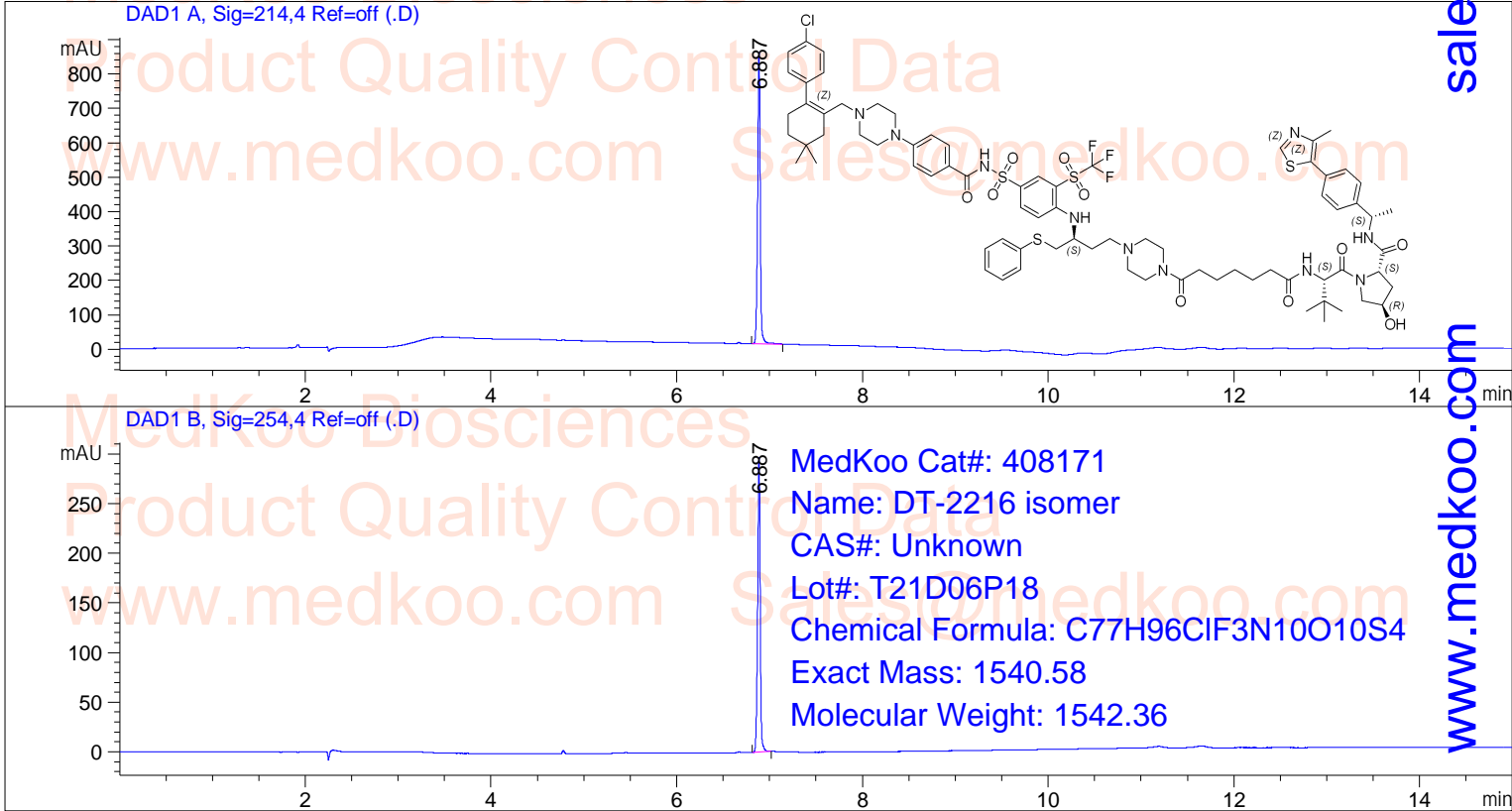
MedKoo Cat#: 408171  
Name: DT-2216 isomer  
CAS#: Unknown  
Lot#: T21D06P18  
Chemical Formula: C77H96ClF3N10O10S4  
Exact Mass: 1540.58  
Molecular Weight: 1542.36



|                |           |               |             |             |       |              |                |
|----------------|-----------|---------------|-------------|-------------|-------|--------------|----------------|
| NMRB003, DMSO, |           |               |             |             |       |              |                |
| F1: 400.232    | F2: 1.000 | SW1: 8224     | PD: 1.0 sec | OF1: 2473.4 | NA: 8 | PTS1d: 32768 |                |
| EX: zg30       |           | PW: 14.0 usec |             | LB: 0.0     |       |              | Nuts - \$pdata |

# DT-2216 isomer HPLC Analysis

=====  
 Acq. Operator :  
 Acq. Instrument : HPLC Location : P2-F-02  
 Sample Name : DT2216 Inj Volume : 1.0 µl  
 Method : C:\CHEM32\1\METHODS\2-HPLC-15MIN.M  
 Method Info : Mobile Phase: A: water(0.05%TFA) B: ACN(0.05%TFA)  
 Gradient: 5% increase to 95%B within 8 min, 95%B for 7 min.  
 Flow Rate: 1.0ml/min  
 Column: Sunfire C18, 4.6\*150mm, 3.5um  
 Column Temperature: 40 C  
 Sample Info : Easy-Access Method: '2-HPLC-15MIN'



## Area Percent Report

Signal 1: DAD1 A, Sig=214,4 Ref=off

| Peak # | RetTime [min] | Type | Width [min] | Area [mAU*s] | Height [mAU] | Area %   |
|--------|---------------|------|-------------|--------------|--------------|----------|
| 1      | 6.887         | BB   | 0.0295      | 1650.77795   | 847.26550    | 100.0000 |

Totals : 1650.77795 847.26550

Signal 2: DAD1 B, Sig=254,4 Ref=off

| Peak # | RetTime [min] | Type | Width [min] | Area [mAU*s] | Height [mAU] | Area %   |
|--------|---------------|------|-------------|--------------|--------------|----------|
| 1      | 6.887         | BB   | 0.0291      | 569.86401    | 296.85193    | 100.0000 |

Totals : 569.86401 296.85193

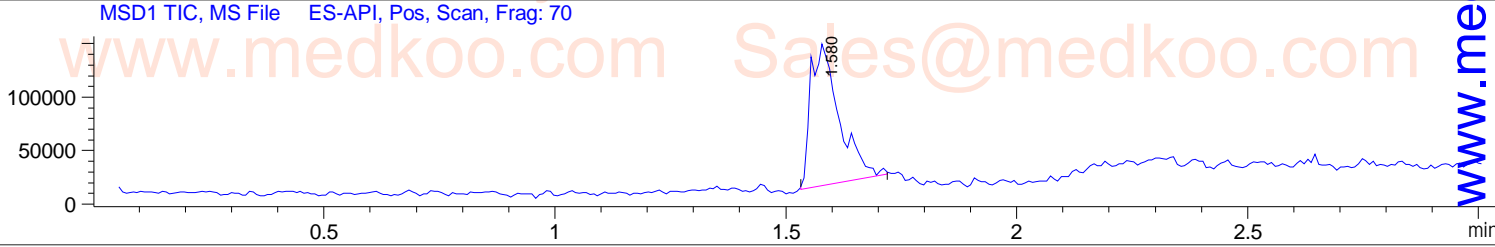
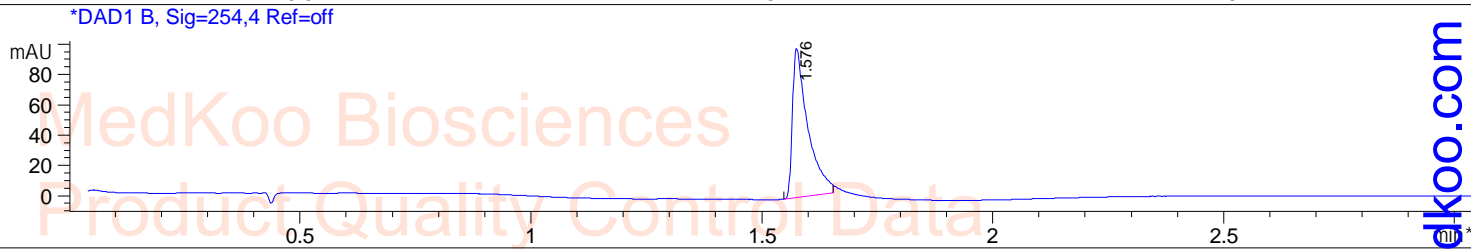
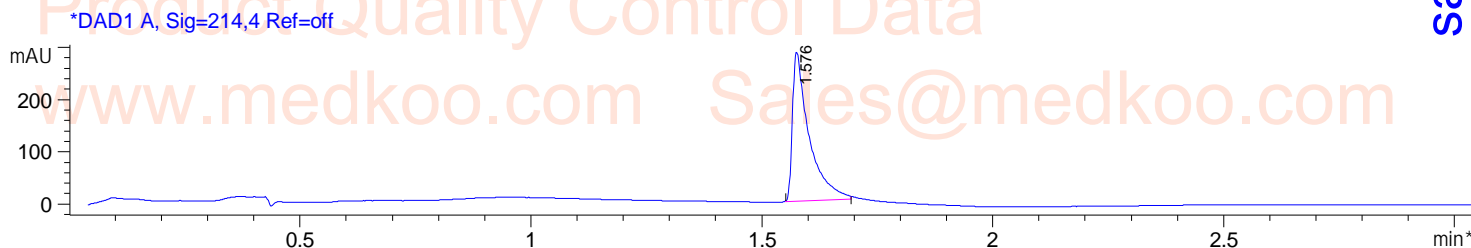
sales@medkoo.com

www.medkoo.com

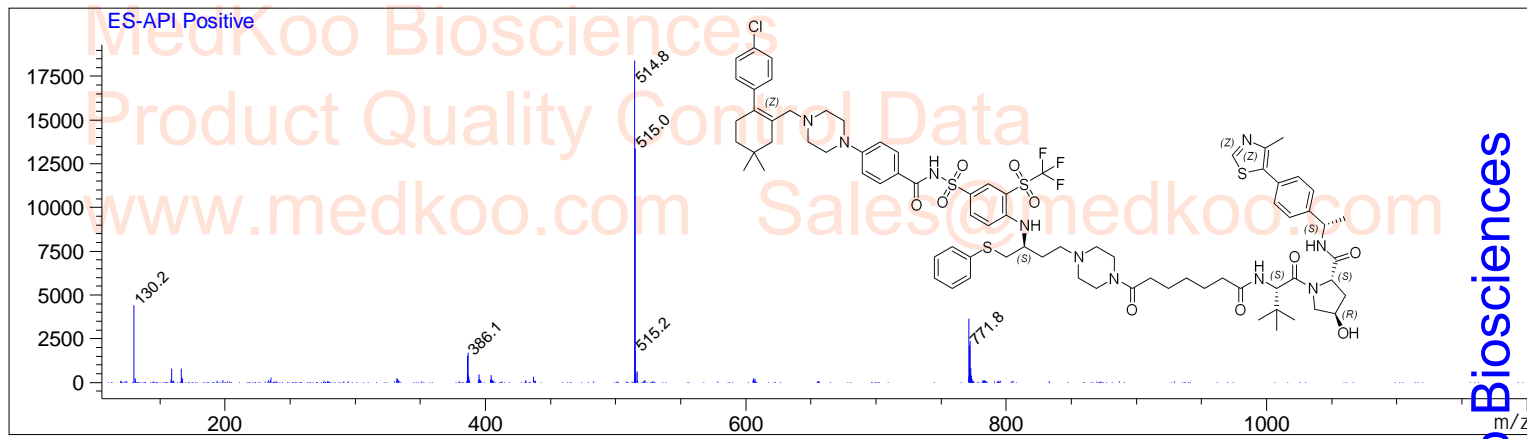
MedKoo Biosciences

# DT-2216 isomer LC/MS Analysis

**Sample Name** : DT2216 **Tgt Mass(EZX)** :  
**Acq. Operator** : **Location** : P1-F-02  
**Spec. Reported** : MS Integration **Inj** : 1  
**Acq. Method** : D:\METHODS\1-POS-3MIN.M **Inj Volume** : 1 ul  
**Analysis Method** : D:\METHODS\1-POS-3MIN.M  
**Sample Info** : Easy-Access Method: '1-POS-3MIN.M'  
**Method Info** : Mobile Phase: A: water(0.01%TFA) B: ACN(0.01%TFA)  
**Gradient**: 5%B increase to 95%B within 1.3 min, 95%B for 1.7 min.  
**Flow Rate**: 2.0ml/min  
**Column**: Sunfire C18, 4.6\*50mm, 3.5um  
**Column Temperature**: 50 C  
**Detection**: UV(214,4nm) and MS(ESI,Pos mode,110 to 1200 amu)



Ret. Time: 1.58 <<<< POSITIVE SPECTRA >>>>



**MedKoo Cat#**: 408171  
**Name**: DT-2216 isomer  
**CAS#**: Unknown  
**Lot#**: T21D06P18  
**Chemical Formula**: C77H96ClF3N10O10S4  
**Exact Mass**: 1540.58  
**Molecular Weight**: 1542.36

sales@medkoo.com

www.medkoo.com

MedKoo Biosciences