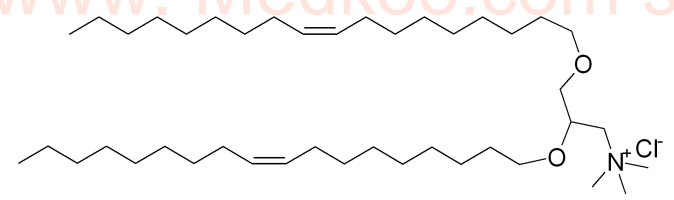


5.36
5.35
5.35
5.33
3.60
3.56
3.55
3.52
3.45
3.44
3.44
3.42
3.41
2.02
2.00
1.99
1.56
1.55
1.28
1.27
0.90
0.88
0.86
-0.00

DOTMA HNMR Analysis, Solvent: CDCl3

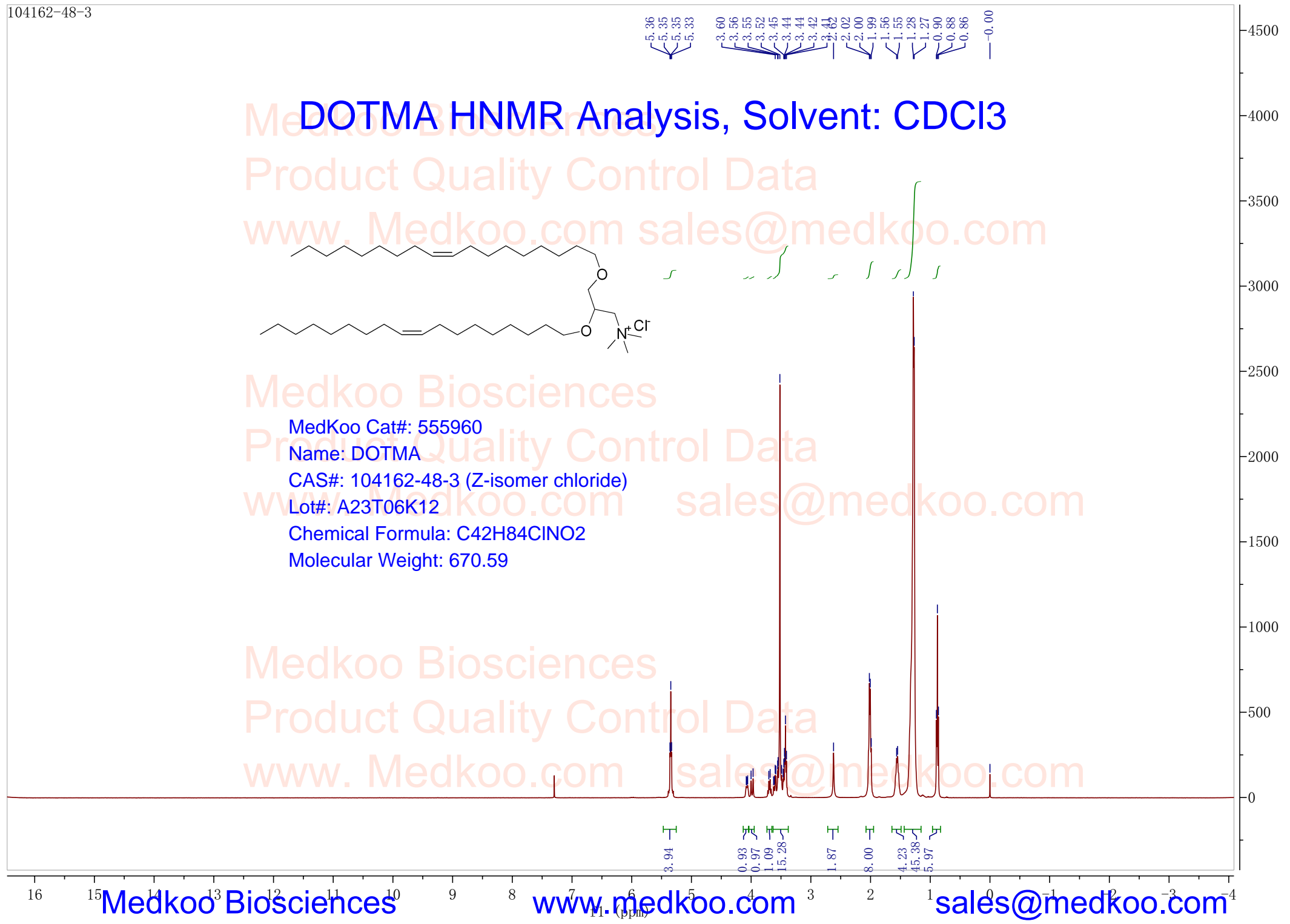
Medkoo Biosciences
Product Quality Control Data
www.Medkoo.com sales@medkoo.com



MedKoo Cat#: 555960
Name: DOTMA
CAS#: 104162-48-3 (Z-isomer chloride)
Lot#: A23T06K12
Chemical Formula: C42H84ClNO2
Molecular Weight: 670.59

Medkoo Biosciences
Product Quality Control Data
www.Medkoo.com sales@medkoo.com

Medkoo Biosciences
Product Quality Control Data
www.Medkoo.com sales@medkoo.com



DOTMA MS Analysis

Sample Name : 104162-48-3
User : System Administrator
Sample Type : Unknown
Tray # : 1
Vial # : 64
Inj. Volume : 0.1
Data File : 104162-48-3.lcd
Method File : ESI.lcm

Medkoo Biosciences
Product Quality Control Data
www.Medkoo.com sales@medkoo.com

