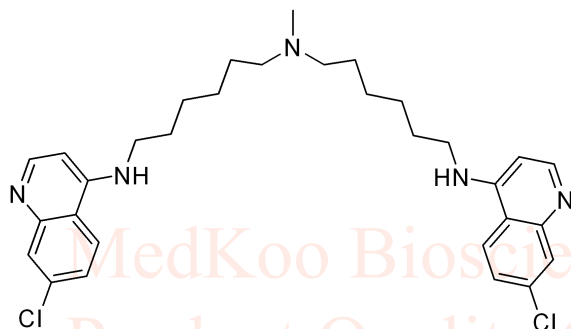


DC661 HNMR Analysis, Solvent MeOH-d4

www.medkoo.com sales@medkoo.com



MedKoo Cat#: 408008

Name: DC661

CAS#: 1872387-43-3

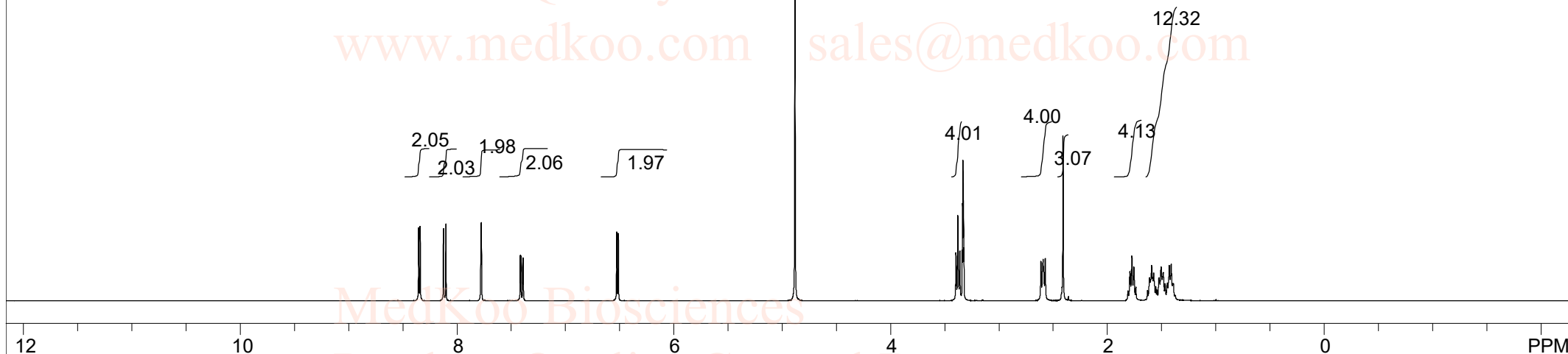
Lot#: A9T08K19

Chemical Formula: C₃₁H₃₉Cl₂N₅

Exact Mass: 551.2583

Molecular Weight: 552.588

www.medkoo.com sales@medkoo.com



MeOD, 1872387-43-3

F1: 400.132	F2: 1.000	SW1: 8224	OF1: 2471.0	PTS1d: 65536
EX: zg30	PW: 15.0 usec	PD: 1.0 sec	NA: 8	LB: 0.0

Nuts - \$pdata

MedKoo Biosciences

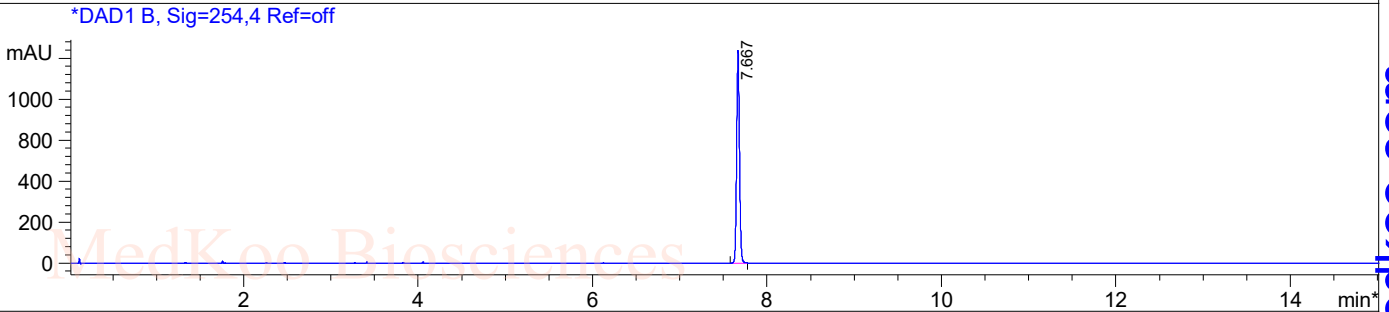
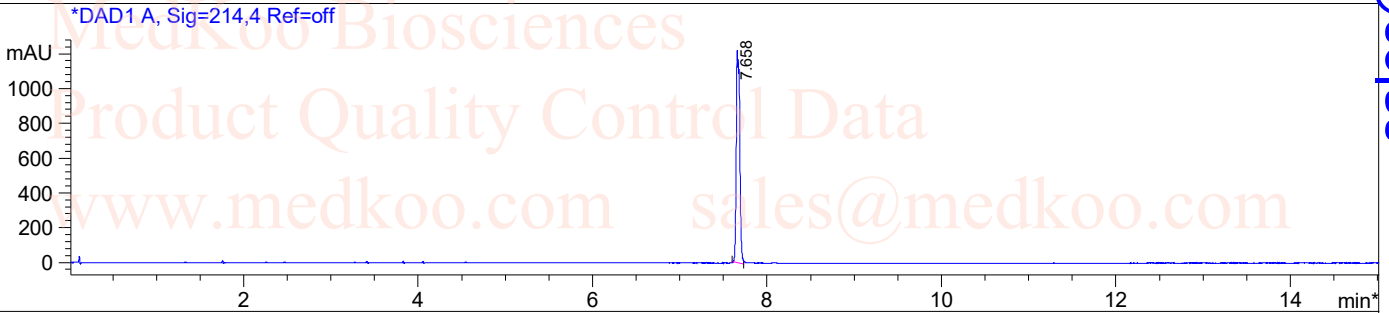
www.medkoo.com

sales@medkoo.com

DC661 HPLC Analysis Report

Sample Name : 1872387-43-3

Method Info : Mobile Phase: A: water(10mM Ammonium hydrogen carbonate) B: ACN
Gradient: 0min 5%B,3min 5%B,10min 95%B,15min 95% B
Flow Rate: 1.2ml/min
Column:SUNFIRE C18 (4.6x 50 mm, 3.5um)
Oven Temperature: 45 C

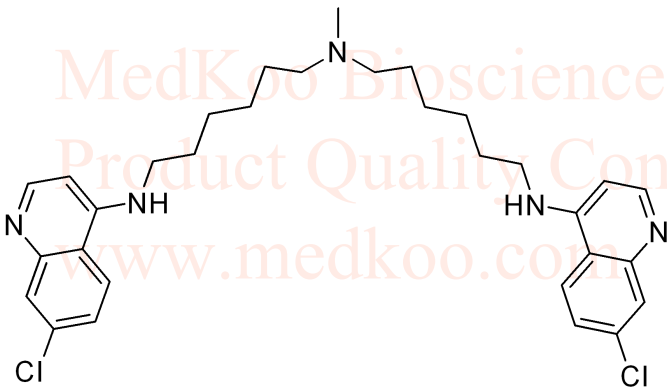


Integration Results for DAD1 A, Sig=214,4 Ref=off

RetTim	Width	Area	Height	Area%
7.66	0.03	1684.46	1153.29	100.00

Integration Results for DAD1 B, Sig=254,4 Ref=off

RetTim	Width	Area	Height	Area%
7.67	0.03	1464.42	1195.08	100.00



MedKoo Cat#: 408008

Name: DC661

CAS#: 1872387-43-3

Lot#: A9T08K19

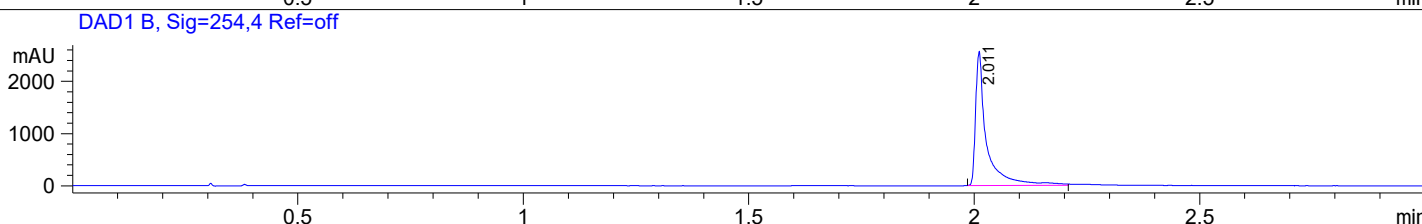
Chemical Formula: C₃₁H₃₉Cl₂N₅

Exact Mass: 551.2583

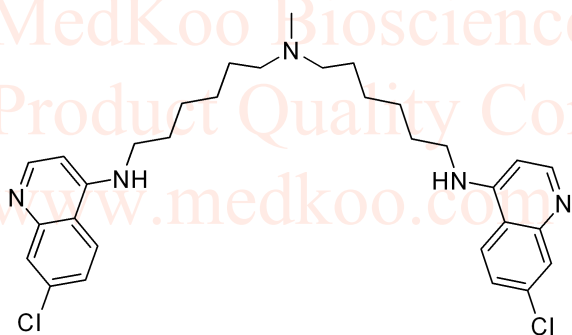
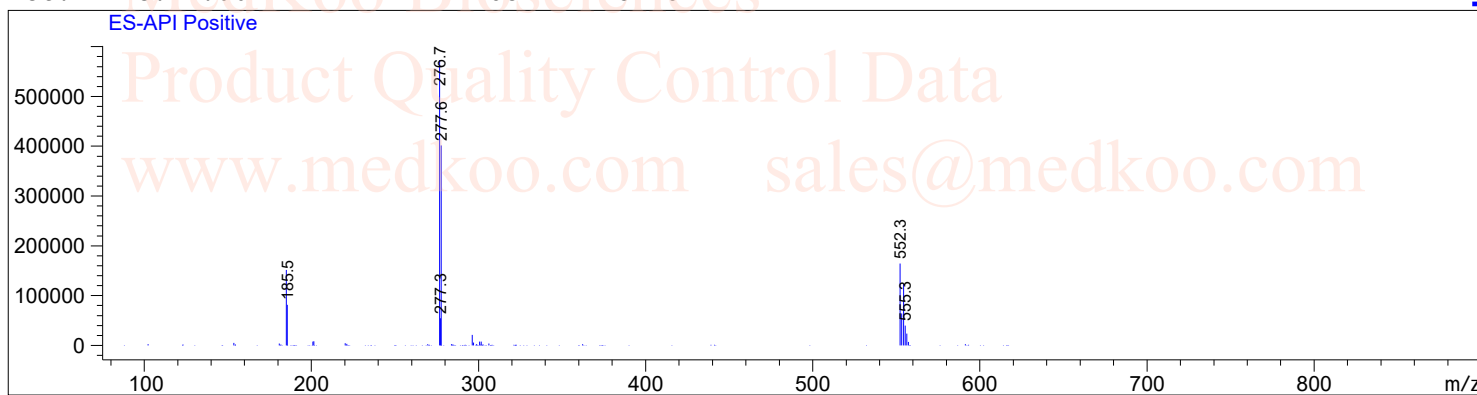
Molecular Weight: 552.588

DC661 LC/MS Analysis Report

Sample Name : 1872387-43-3
Method Info : Mobile Phase: A: water(10mm NH₄HCO₃) B: ACN
Gradient: 5%-95% B in 1.5min
Flow Rate: 2.0ml/min
Column: X-Bridge C18, 4.6*50mm, 5um
Oven Temperature: 40 C
MASS Range: 110-800



Ret. Time: 2.06 <<<< POSITIVE SPECTRA >>>>



MedKoo Cat#: 408008

Name: DC661

CAS#: 1872387-43-3

Lot#: A9T08K19

Chemical Formula: C₃₁H₃₉Cl₂N₅

Exact Mass: 551.2583

Molecular Weight: 552.588