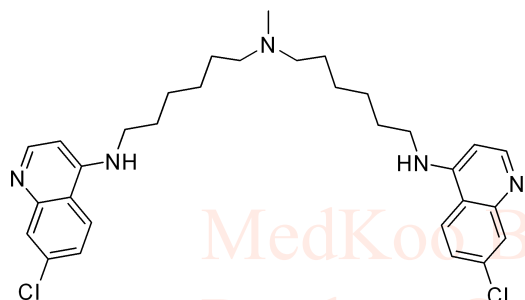
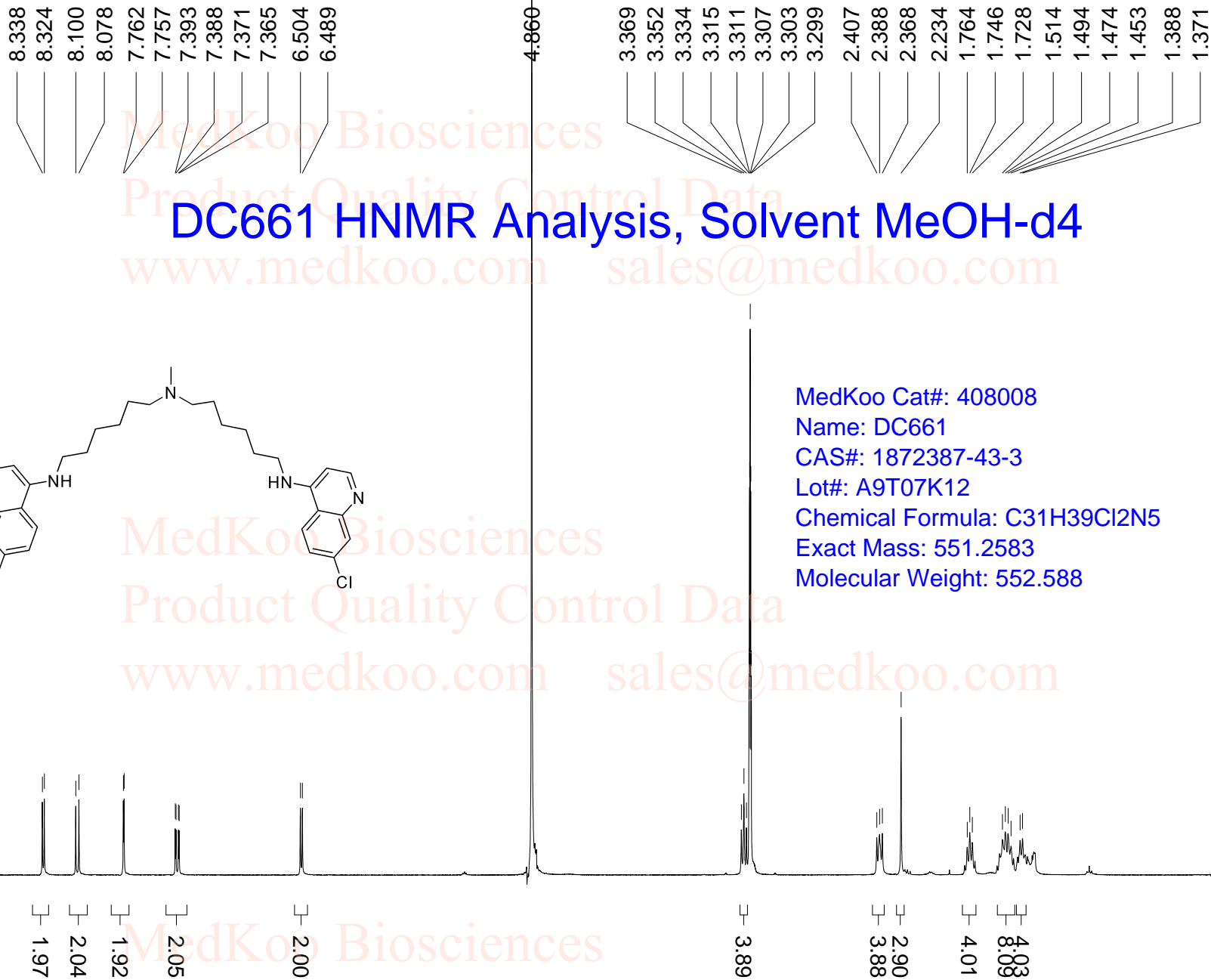


DC661 HNMR Analysis, Solvent MeOH-d4



MedKoo Cat#: 408008
Name: DC661
CAS#: 1872387-43-3
Lot#: A9T07K12
Chemical Formula: C31H39Cl2N5
Exact Mass: 551.2583
Molecular Weight: 552.588



10.0
ppm (t1)

MedKoo Biosciences

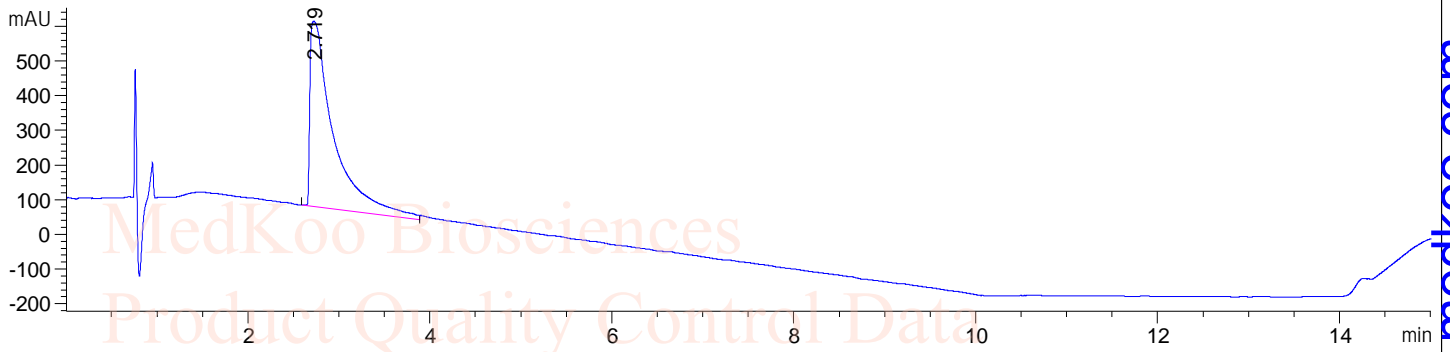
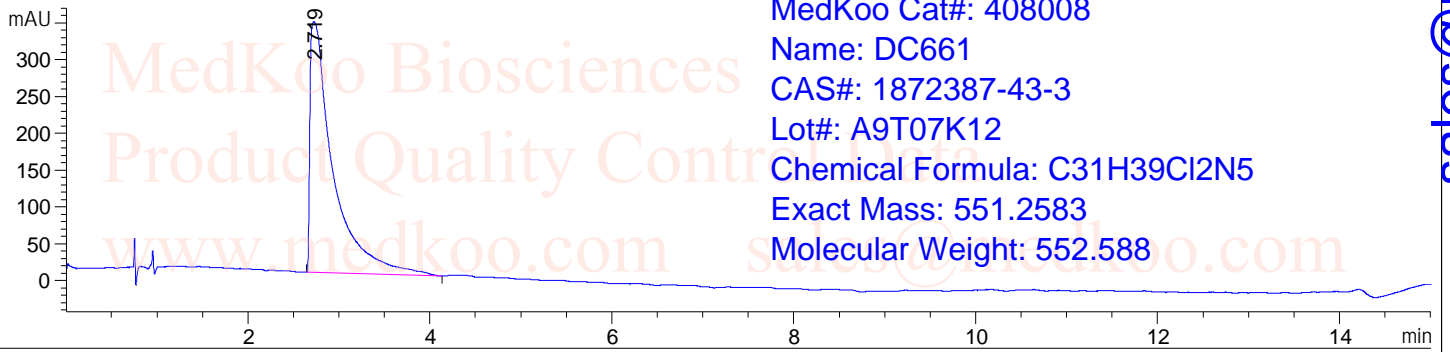
www.medkoo.com

sales@medkoo.com

DC661 HPLC Analysis Report

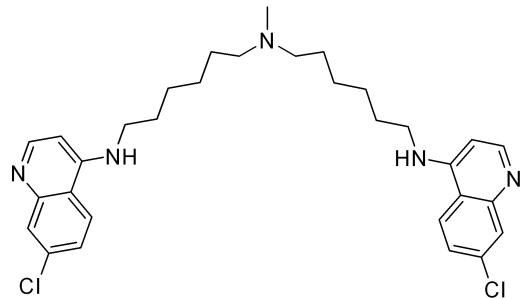
User : 02236001 Inj Volume : 20.000 µL
 Acq. Method : C:\CHEM32\1\METHODS\ACID 15MIN.M
 Analysis Method : C:\CHEM32\1\METHODS\EPICAN.M
 Sample Info : Easy-Access Method: 'Acid-15 min'

Additional Info : Peak(s) manually integrated



Area Percent Report

Sorted By : Signal
 Multiplier : 1.0000
 Dilution : 1.0000
 Use Multiplier & Dilution Factor with ISTDs



Signal 1: DAD1 A, Sig=254, 4 Ref=off

| Peak # | RetTime [min] | Type | Width [min] | Area [mAU*s] | Height [mAU] | Area % |
|--------|---------------|------|-------------|--------------|--------------|----------|
| 1 | 2.719 | VB | 0.2436 | 6001.58740 | 340.50992 | 100.0000 |

Totals : 6001.58740 340.50992

Signal 2: DAD1 C, Sig=214, 4 Ref=off

| Peak # | RetTime [min] | Type | Width [min] | Area [mAU*s] | Height [mAU] | Area % |
|--------|---------------|------|-------------|--------------|--------------|----------|
| 1 | 2.719 | VV | 0.2449 | 9569.65332 | 534.46942 | 100.0000 |

Totals : 9569.65332 534.46942

DC661 LC/MS Analysis Report

