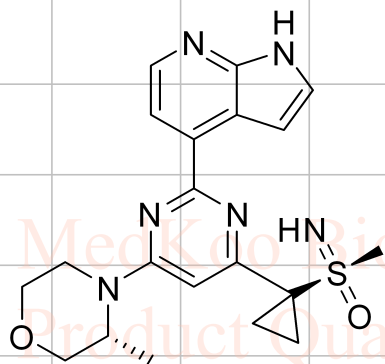
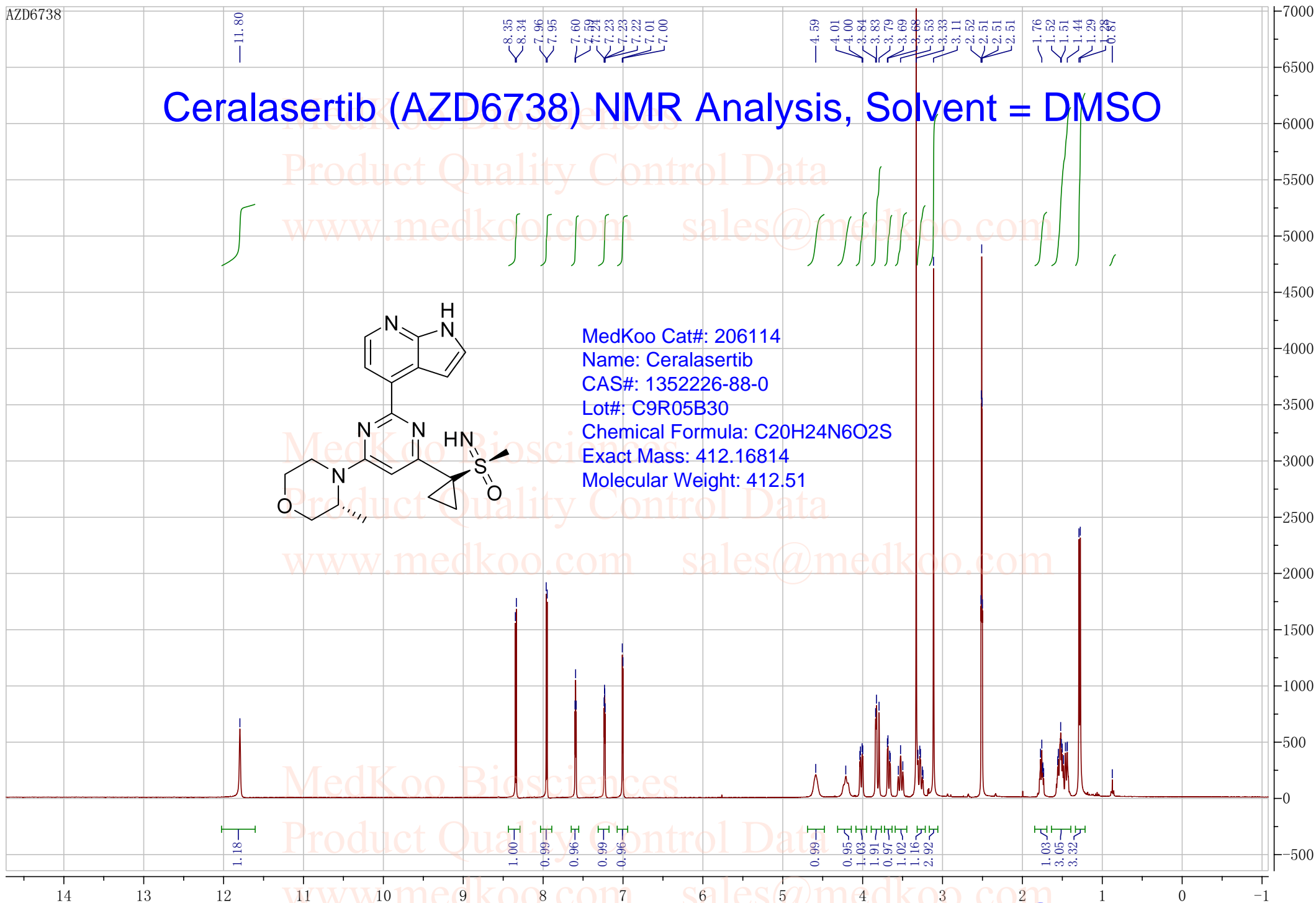


AZD6738

# Ceralasertib (AZD6738) NMR Analysis, Solvent = DMSO



MedKoo Cat#: 206114  
 Name: Ceralasertib  
 CAS#: 1352226-88-0  
 Lot#: C9R05B30  
 Chemical Formula: C<sub>20</sub>H<sub>24</sub>N<sub>6</sub>O<sub>2</sub>S  
 Exact Mass: 412.16814  
 Molecular Weight: 412.51

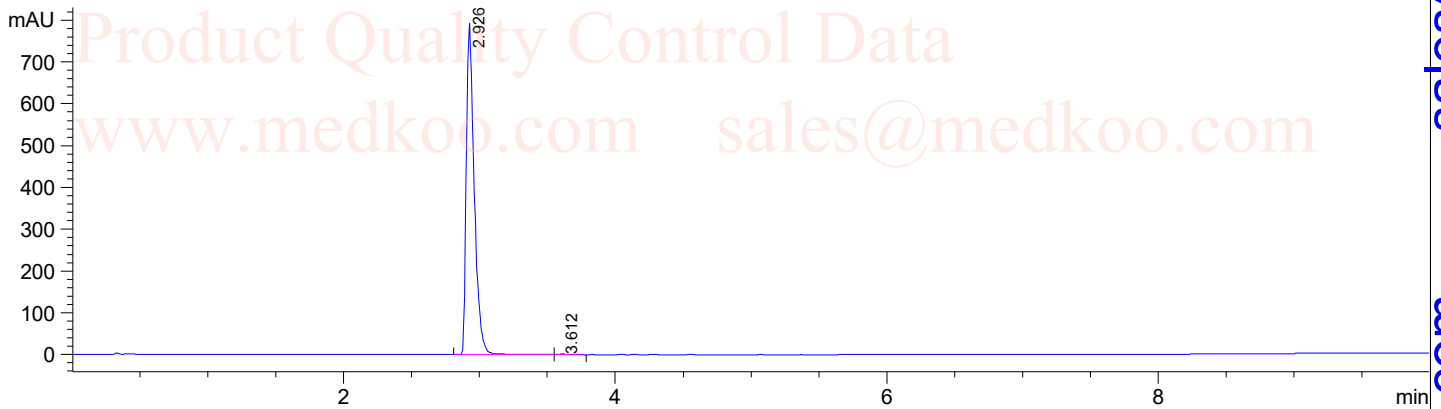


# Ceralasertib (AZD6738) HPLC Analysis

Sample Name : AZD6738  
Acq. Operator : 1  
Spec. Reported : Integration

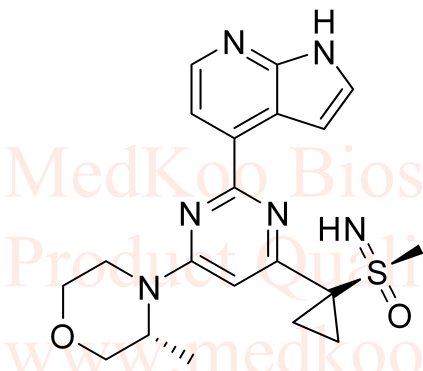
Tgt Mass(CHM) :  
Location : P2-A-09  
Inj : 0  
Inj Volume : 6 ul

DAD1 B, Sig=214,4 Ref=off



Integration Results for DAD1 A, Sig=214,4 Ref=off

RetTim	Width	Area	Height	Area%
2.93	0.06	3243.60	793.47	99.77
3.61	0.06	7.59	1.78	0.23

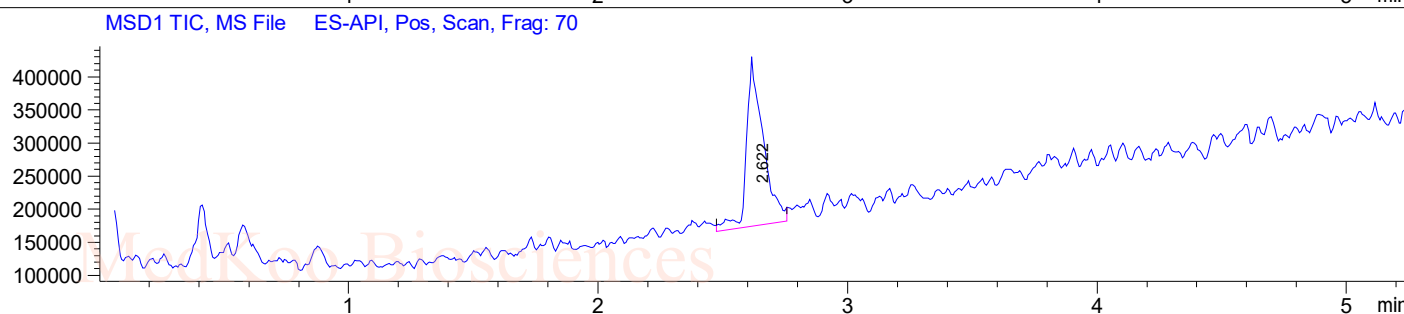
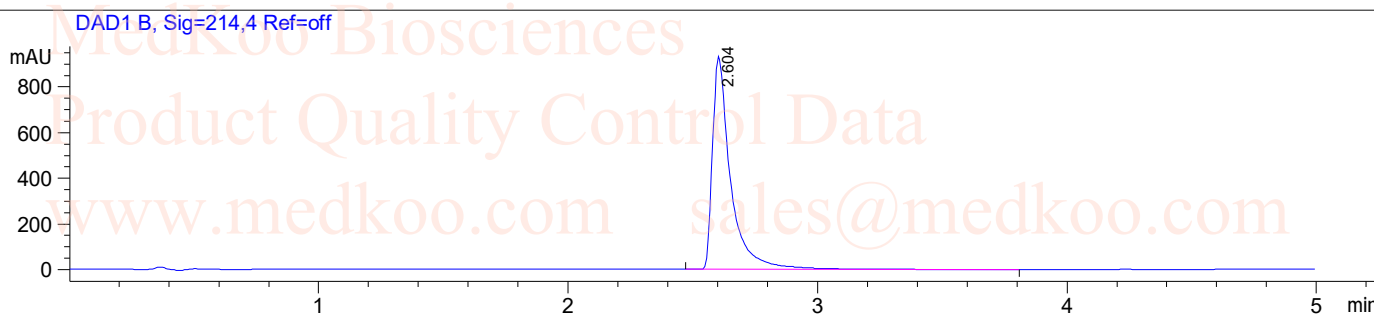


MedKoo Cat#: 206114  
Name: Ceralasertib  
CAS#: 1352226-88-0  
Lot#: C9R05B30  
Chemical Formula: C<sub>20</sub>H<sub>24</sub>N<sub>6</sub>O<sub>2</sub>S  
Exact Mass: 412.16814  
Molecular Weight: 412.51

# Ceralasertib (AZD6738) MS/LC Analysis

Sample Name : AZD6738  
Acq. Operator : 8  
Spec. Reported : MS Integration

Tgt Mass(EZX) :  
Location : P1-A-02  
Inj : 1  
Inj Volume : 5 ul

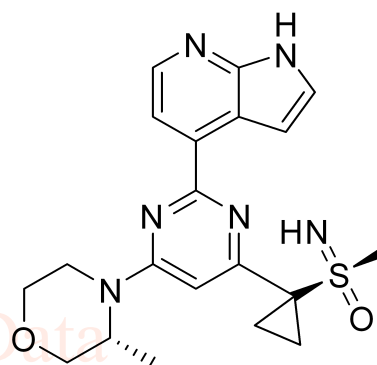
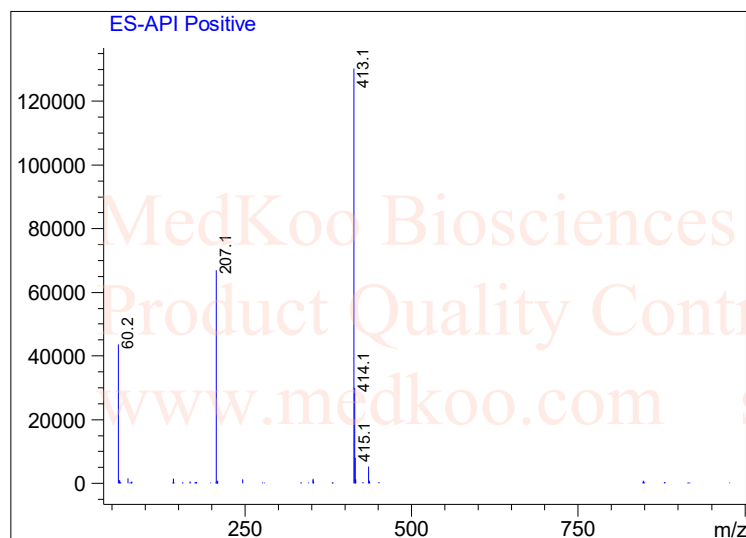


Integration Results for DAD1 A, Sig=214,4 Ref=off

RetTim	Width	Area	Height	Area%
2.60	0.07	4732.05	934.58	100.00

Ret. Time: 2.62

<<<< POSITIVE SPECTRA >>>>



MedKoo Cat#: 206114  
Name: Ceralasertib  
CAS#: 1352226-88-0  
Lot#: C9R05B30  
Chemical Formula: C<sub>20</sub>H<sub>24</sub>N<sub>6</sub>O<sub>2</sub>S  
Exact Mass: 412.16814  
Molecular Weight: 412.51