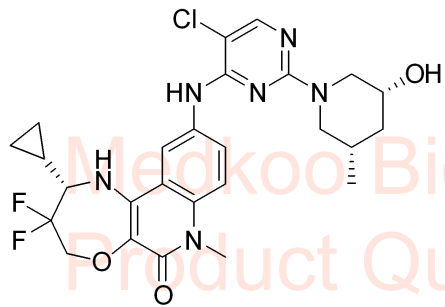


CCT373566 HNMR Analysis, Solvent :DMSO

Product Quality Control Data

www.Medkoo.com sales@medkoo.com



MedKoo Cat#: 466270

Name: CCT373566

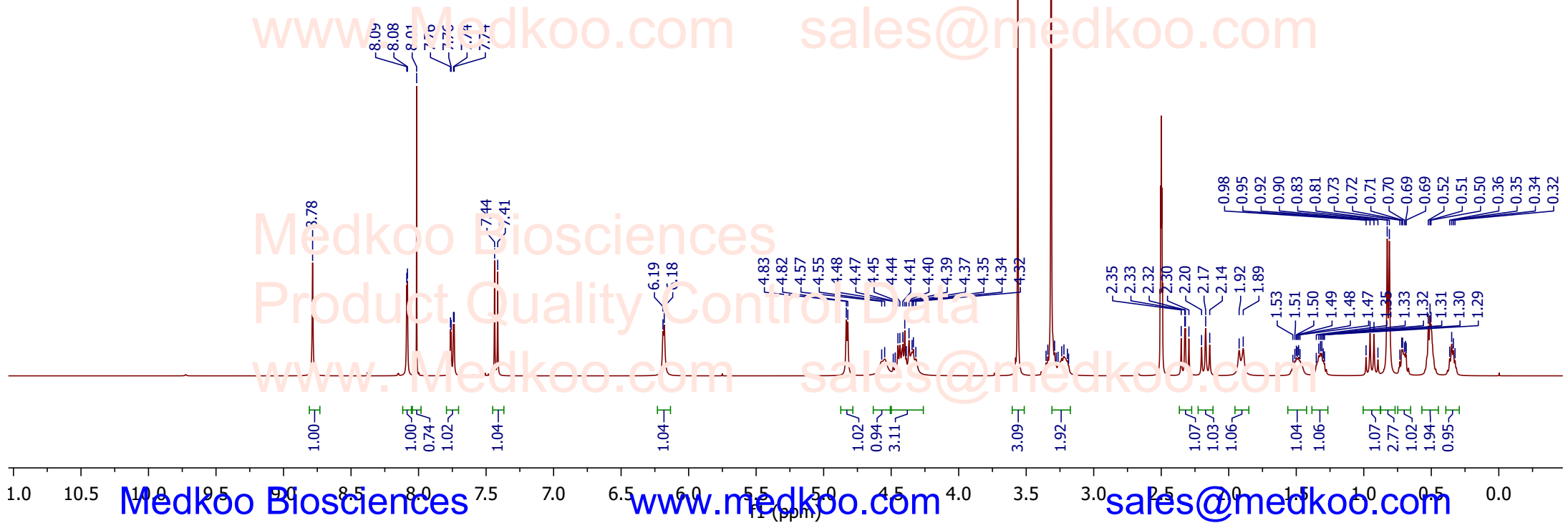
CAS#: 2378853-66-6

Lot#: Y23X01M18

Chemical Formular: C₂₆H₂₉ClF₂N₆O₃

Exact Mass: 546.1958

Molecular Weight: 547.00



CCT373566 HPLC Analysis

sales@medkoo.com

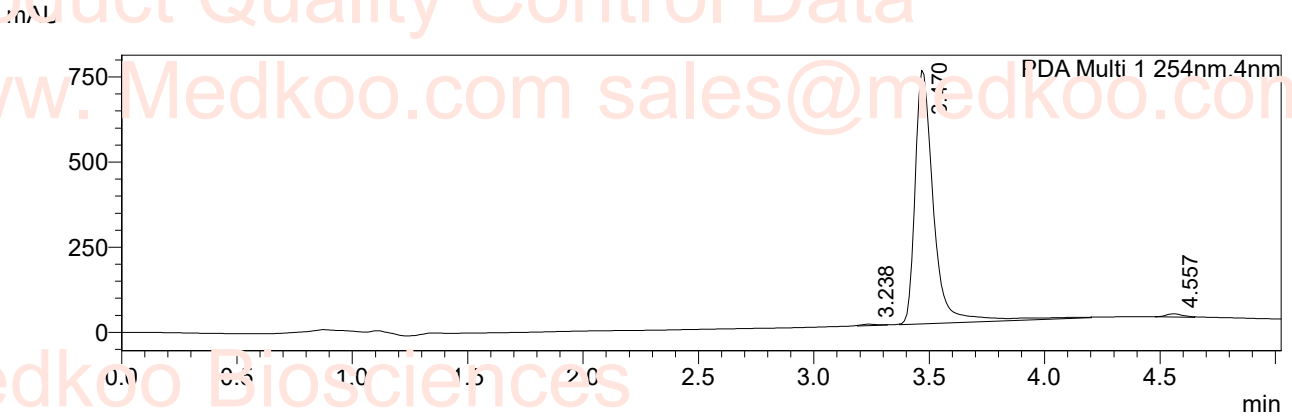
www.medkoo.com

Medkoo Biosciences

<Sample Information>

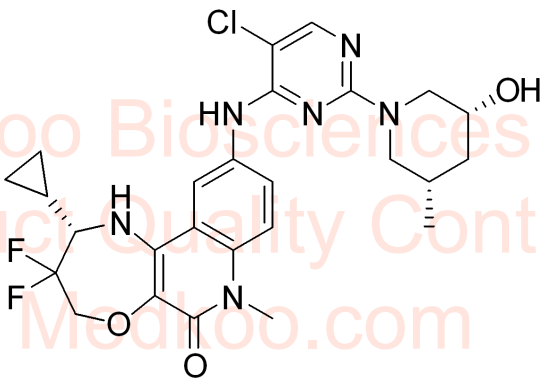
Sample Name : CCT
Sample ID : CCT
Data Filename : CCT_155_001.lcd
Method Filename : A01_g_b20b90_t6_f300.lcm
Batch Filename : YYC_Aug_Table_01.lcb
Vial # : 1-138
Injection Volume : 3 µl
Sample Type : Unknown
Acquired by : System Administrator
Processed by : System Administrator

<Chromatogram>



Peak Table

Peak#	Ret. Time	Peak Start	Peak End	Height	Area	Area%
1	3.238	3.189	3.317	4297	22267	0.527
2	3.570	3.371	4.203	744956	4155275	98.344
3	4.557	4.480	4.651	9578	47724	1.129
Total				758841	4225266	100.000

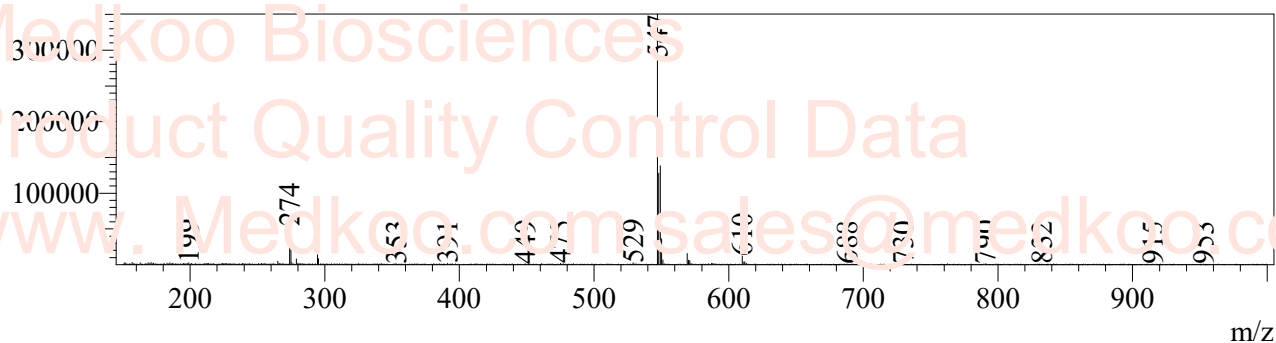


MedKoo Cat#: 466270
Name: CCT373566
CAS#: 2378853-66-6
Lot#: Y23X01M18
Chemical Formular: C26H29ClF2N6O3
Exact Mass: 546.1958
Molecular Weight: 547.00

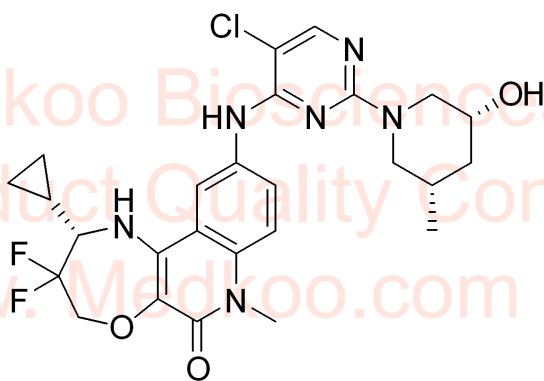
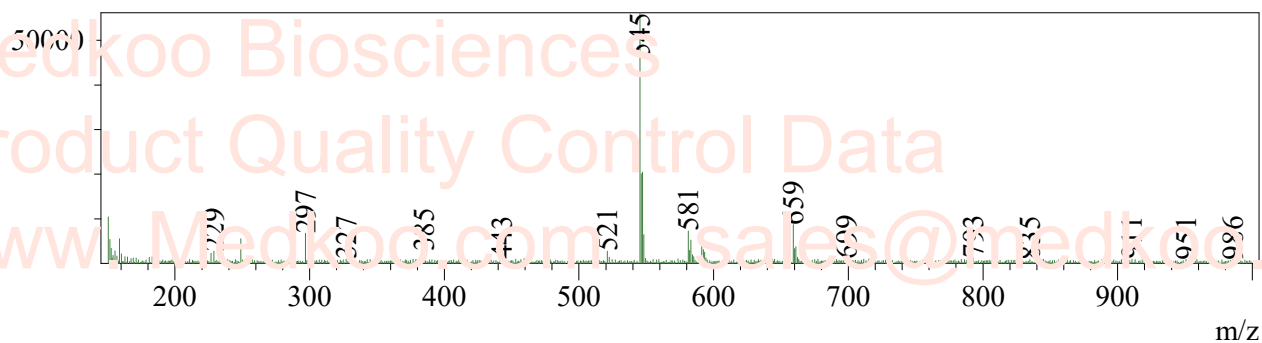
Medkoo Biosciences
Product Quality Control Data
www.Medkoo.com sales@medkoo.com

CCT373566 MS Analysis

MS Spectrum
R.Time:3.567(Scan#:215)
MassPeaks:865
Segment 1 - Event 1



R.Time:3.583(Scan#:216)
MassPeaks:860
Segment 1 - Event 2



MedKoo Cat#: 466270
Name: CCT373566
CAS#: 2378853-66-6
Lot#: Y23X01M18
Chemical Formular: C₂₆H₂₉ClF₂N₆O₃
Exact Mass: 546.1958
Molecular Weight: 547.00