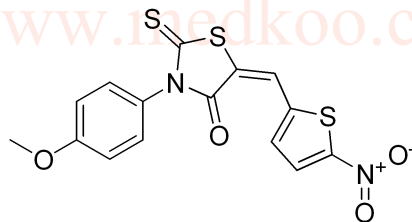


CCF-642 HNMR Analysis, solvent: DMSO

8.271
8.259
8.153
7.791
7.780
7.357
7.335
7.118
7.096
3.834
3.311
2.513
2.508
2.504



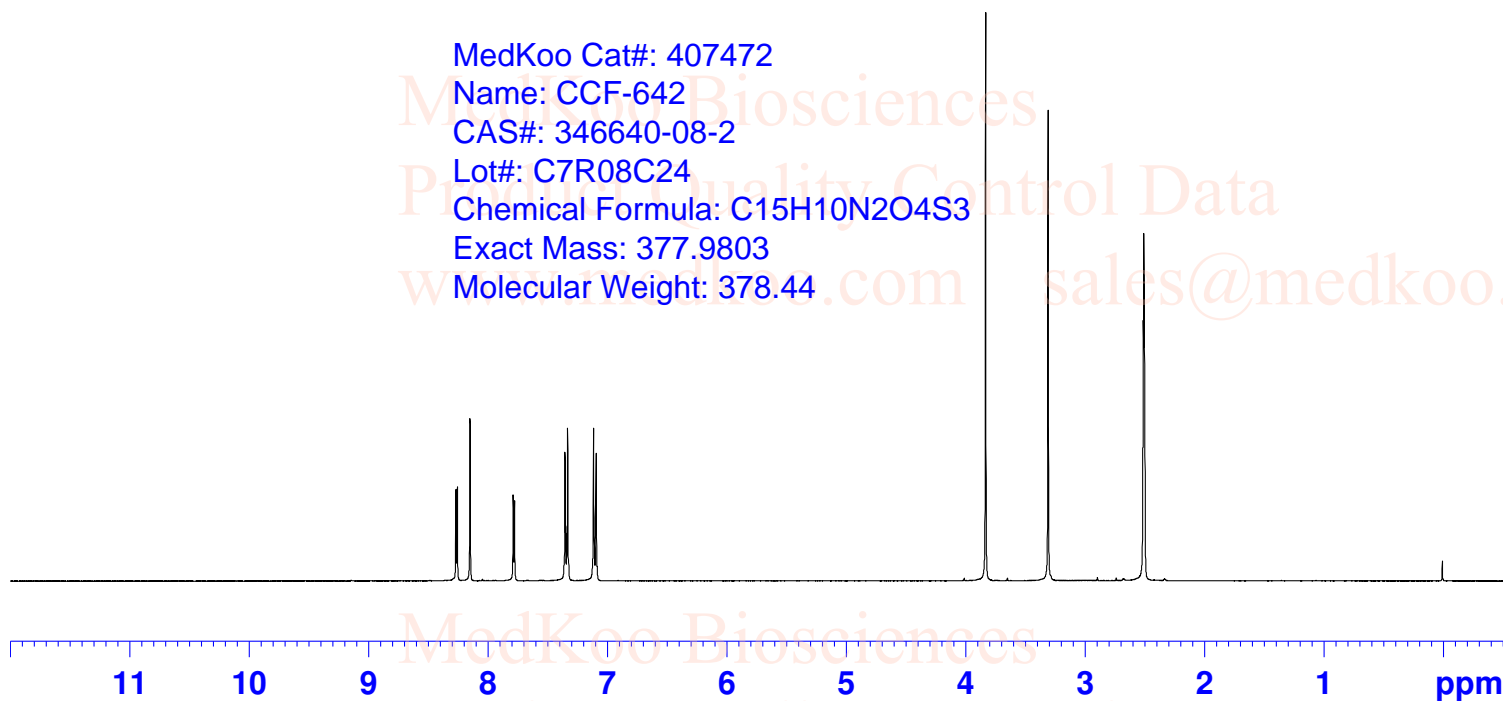
MedKoo Cat#: 407472
Name: CCF-642
CAS#: 346640-08-2
Lot#: C7R08C24
Chemical Formula: C₁₅H₁₀N₂O₄S₃
Exact Mass: 377.9803
Molecular Weight: 378.44

```

NAME      CCF-642
EXPNO     1
PROCNO    1
INSTRUM   spect
PROBHD    5 mm PABBO B
PULPROG   B- zg30
TD        65536
SOLVENT   DMSO
NS        12
DS        0
SWH       8223.685 Hz
FIDRES    0.125483 Hz
AQ        3.9846387 sec
RG        456
DW        60.800 usec
DE        6.50 usec
TE        300.0 K
D1        1.00000000 sec
TD0       1
    
```

```

===== CHANNEL f1 =====
NUC1      1H
P1        10.85 usec
PL1       -4.00 dB
PL1W      20.19063568 W
SF01      400.1324710 MHz
SI        32768
SF        400.1300000 MHz
WDW       EM
SSB       0
LB        0.30 Hz
GB        0
PC        1.00
    
```



1.00
1.01
1.00
2.04
2.06

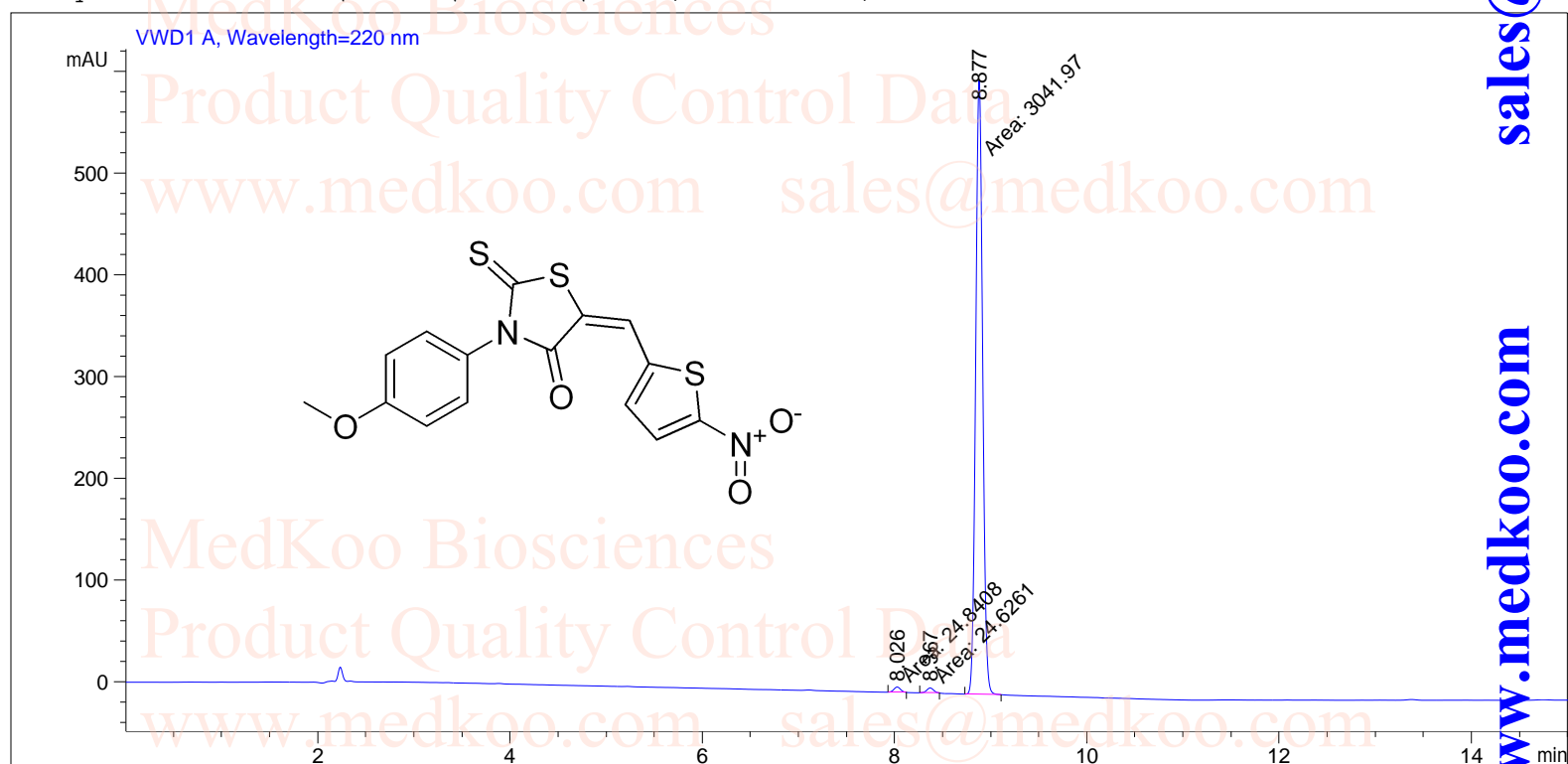
3.06

CCF-642 HPLC Analysis

```

=====
Acq. Operator   : System                      Seq. Line :    1
Acq. Instrument : LC1260                     Location  : Vial 16
Sample Name    : CFF-642                     Inj       :    1
                                                Inj Volume: 0 µl
Different Inj Volume from Sequence !      Actual Inj Volume : 2 µl

Acq. Method    : E:\DATA\YZJ\Data\60-90 AD 15MIN.M
Analysis Method: D:\PUBLIC\LSK-Z.D\DA.M (5-95 6MIN.M)
    
```



Area Percent Report

```

=====
Sorted By      :      Signal
Multiplier    :      1.0000
Dilution      :      1.0000
Use Multiplier & Dilution Factor with ISTDs
Signal 1: VWD1 A, Wavelength=220 nm
    
```

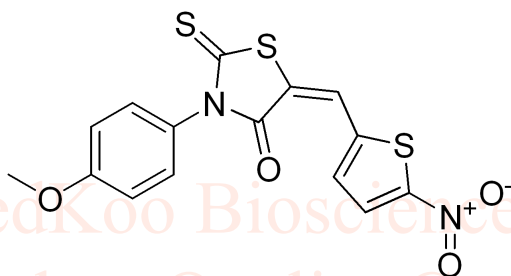
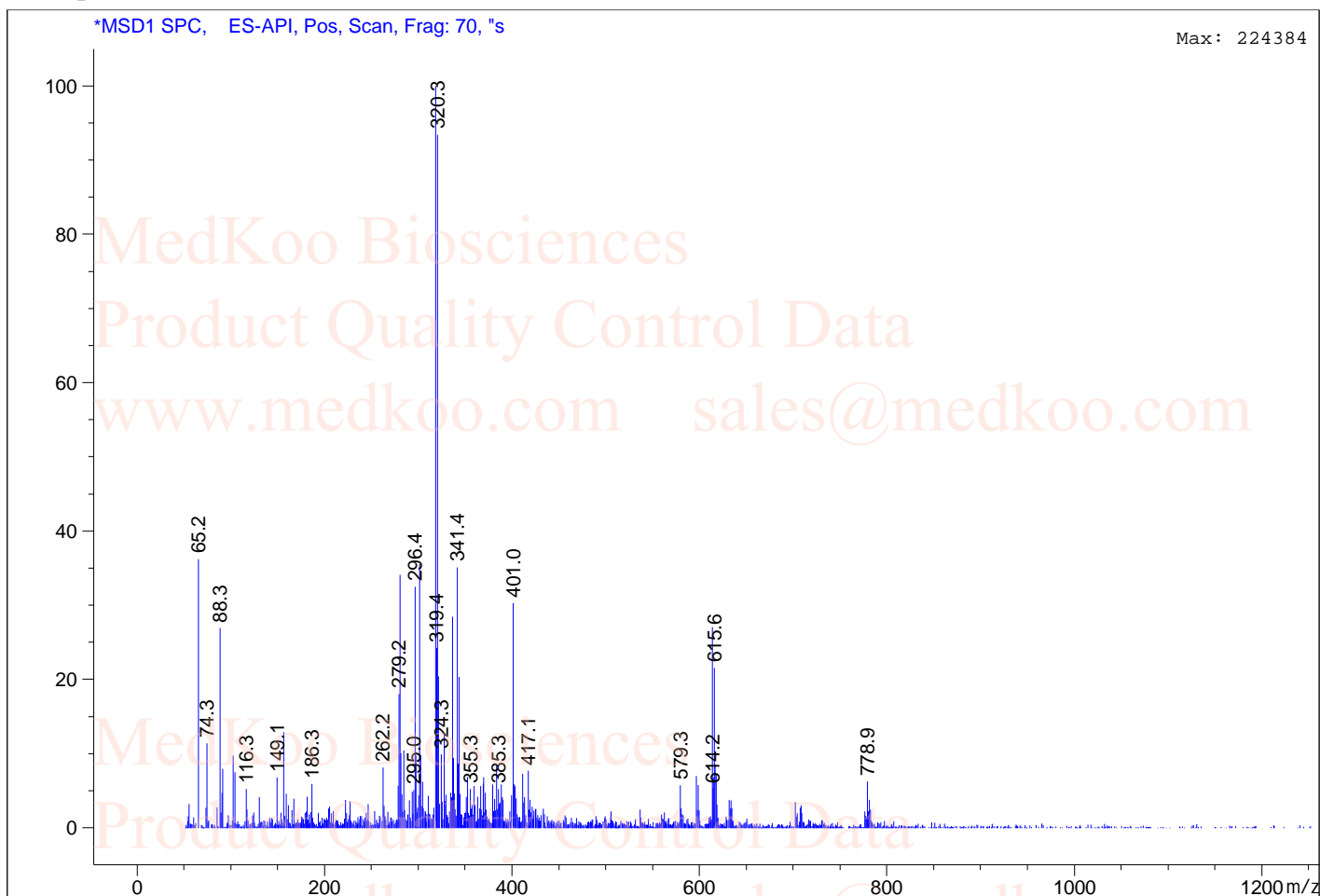
```

MedKoo Cat#: 407472
Name: CCF-642
CAS#: 346640-08-2
Lot#: C7R08C24
Chemical Formula: C15H10N2O4S3
Exact Mass: 377.9803
Molecular Weight: 378.44
    
```

| Peak # | RetTime [min] | Type | Width [min] | Area [mAU*s] | Height [mAU] | Area % |
|----------|---------------|------|-------------|--------------|--------------|---------|
| 1 | 8.026 | MM | 0.0803 | 24.84080 | 5.15598 | 0.8035 |
| 2 | 8.367 | MM | 0.0842 | 24.62611 | 4.87605 | 0.7966 |
| 3 | 8.877 | MM | 0.0839 | 3041.97339 | 604.37451 | 98.3999 |
| Totals : | | | | 3091.44030 | 614.40654 | |

CCF-642 MS Analysis

MS Spectrum



MedKoo Cat#: 407472

Name: CCF-642

CAS#: 346640-08-2

Lot#: C7R08C24

Chemical Formula: C₁₅H₁₀N₂O₄S₃

Exact Mass: 377.9803

Molecular Weight: 378.44

sales@medkoo.com

www.medkoo.com

MedKoo Biosciences