

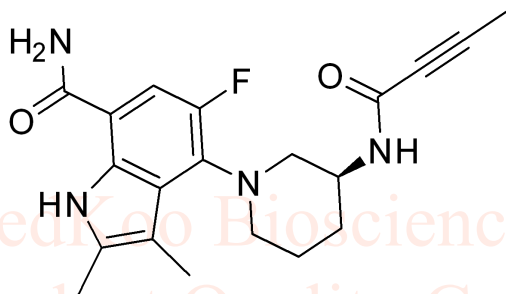
10.618

8.478
8.463
7.911
7.422
7.403
7.386
7.325

3.138
3.910
3.894
3.121
3.009
3.943
2.825
2.798
2.786
2.507
2.503
2.498
2.393
2.366
2.312
1.988
1.937
1.892
1.865
1.717
1.345
1.324
1.294
1.276
1.239
0.876
0.859
0.842
-0.001

Branebrutinib HNMR Analysis in DMSO

MedKoo Biosciences
Product Quality Control Data
www.medkoo.com sales@medkoo.com



MedKoo Cat#: 206954

Name: Branebrutinib

CAS#: 1912445-55-6

Lot#: A20T04K29

Chemical Formula: C₂₀H₂₃FN₄O₂

Exact Mass: 370.1805

Molecular Weight: 370.43

MedKoo Biosciences
Product Quality Control Data
www.medkoo.com sales@medkoo.com

1.08

0.94

1.00

1.11
1.03

1.10

1.13

1.04

3.06
3.17

3.13

2.17
2.18

1.07
1.03

10

8

6

4

2

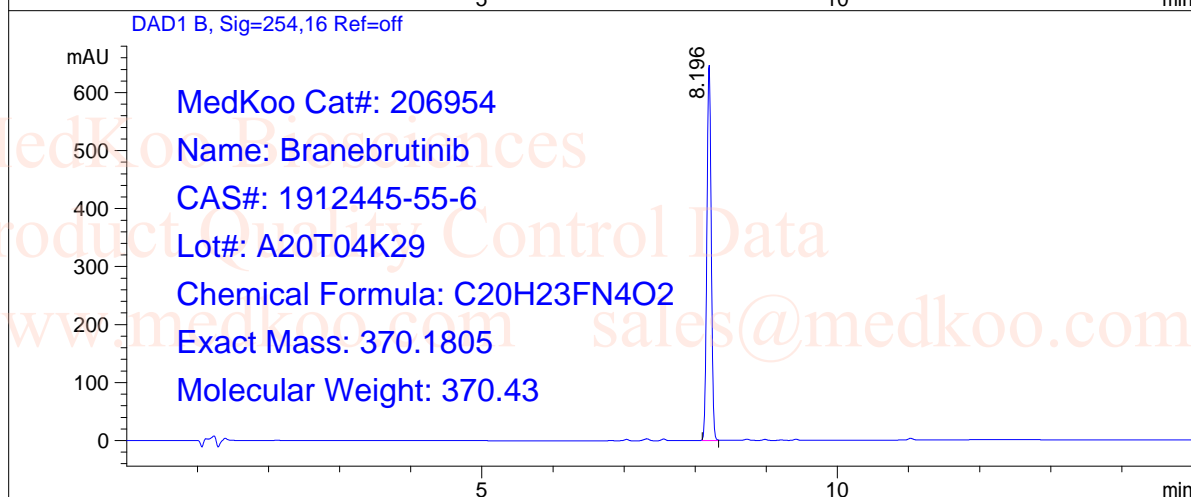
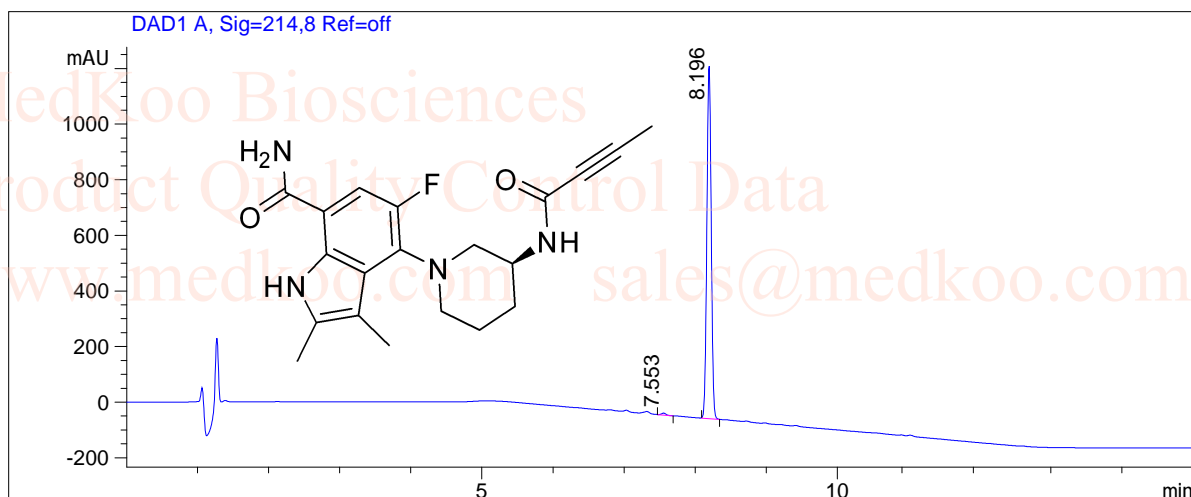
0

PPM

MedKoo Biosciences
Product Quality Control Data
www.medkoo.com sales@medkoo.com

Branebrutinib HPLC Analysis

Sample Name : 1912445-55-6 Inj. Vol. : 3ul
Data File : D:\DATA-LCMS-13\1912445-55-6.D Location : Vial 32
Acq Operator : LCMS-13
Acq. Method : D:\data-lcms-13\C2-P-20-95-TFA-15MI
Method Info. : column:Eclipse XDB-C18 5um 4.6*150mm ;mobile phase:B(ACN), A(0.02%NH4AC); gradient(B%):as Acq.Method above



=====
Integration Results
=====

Signal 1: DAD1 A, Sig=214,8 Ref=off

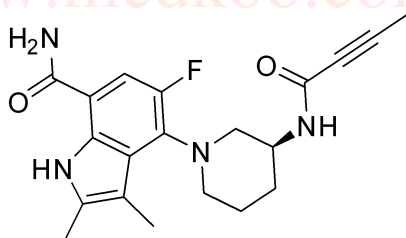
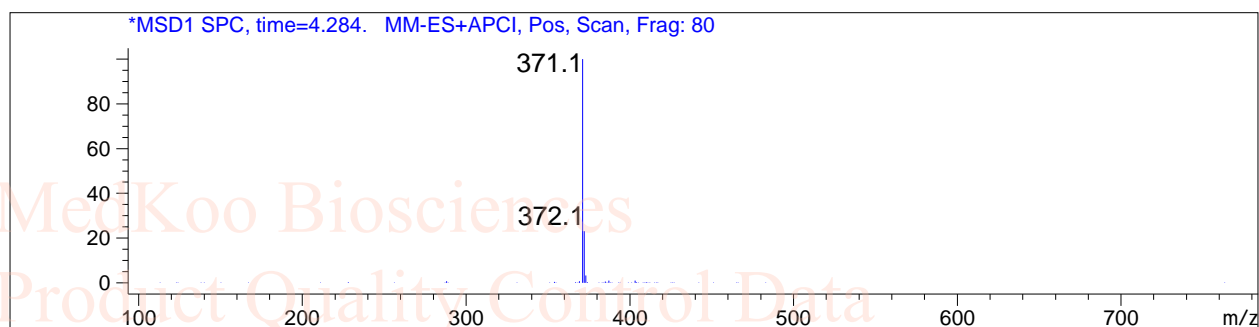
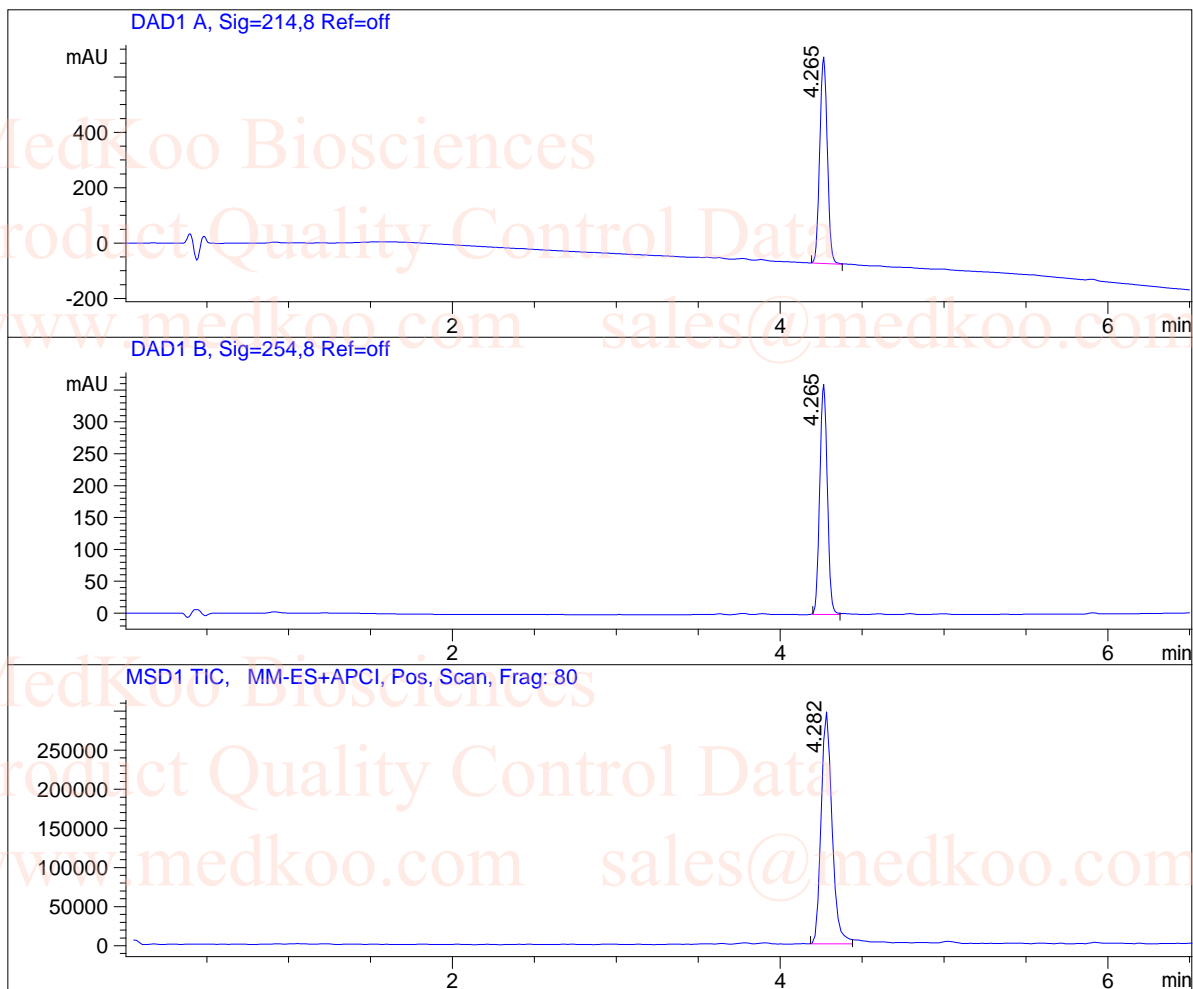
#	R.T.	Type	Height	Height%	Width	Area	Area %
1	7.553	BB	6.707	0.525	0.064	27.739	0.515
2	8.196	BB	1271.738	99.475	0.065	5354.799	99.485

Signal 2: DAD1 B, Sig=254,16 Ref=off

#	R.T.	Type	Height	Height%	Width	Area	Area %
1	8.196	BB	649.270	100.000	0.065	2736.983	100.000

Branebrutinib LCMS Analysis

Sample Name : 1912445-55-6 Inj. Vol. : 3ul
Data File : D:\DATA-LCMS-13\1912445-55-6.D Location : Vial 32
Acq Operator : LCMS-13
Acq. Method : D:\data-lcms-13\C2-P-20-95-TFA-15MI
Method Info. : column:Eclipse XDB-C18 5um 4.6*150mm ;mobile phase:B(ACN), A(0.02%NH4AC); gradient(B%):as Acq.Method above



MedKoo Cat#: 206954

Name: Branebrutinib

CAS#: 1912445-55-6

Lot#: A20T04K29

Chemical Formula: C₂₀H₂₃FN₄O₂

Exact Mass: 370.1805

Molecular Weight: 370.43