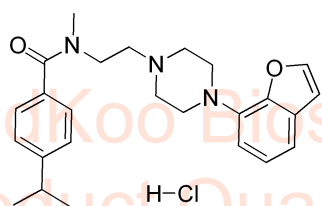


# Befiperide HCl HNMR Analysis, Solvent: DMSO

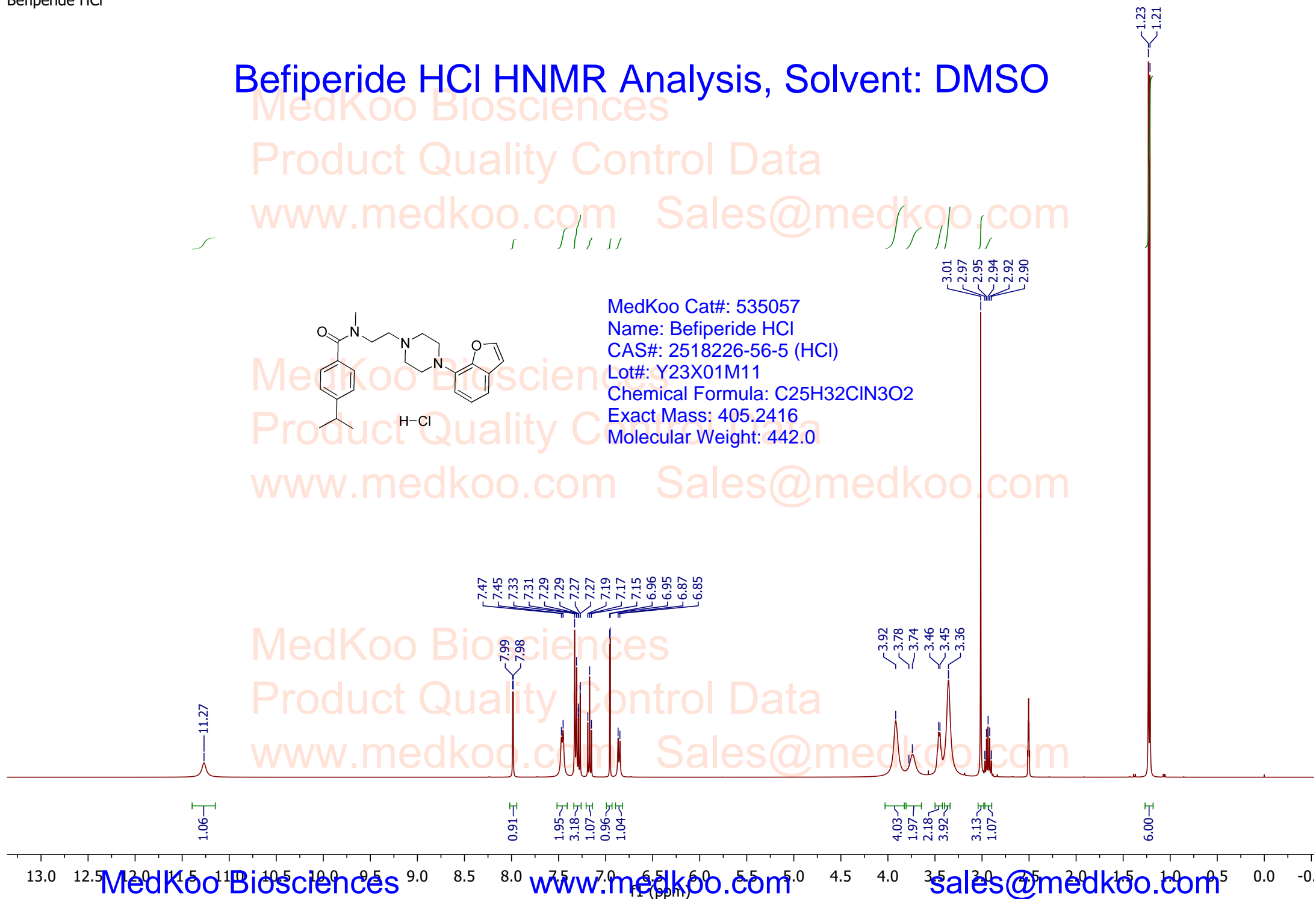
MedKoo Biosciences

Product Quality Control Data

www.medkoo.com Sales@medkoo.com



MedKoo Cat#: 535057  
Name: Befiperide HCl  
CAS#: 2518226-56-5 (HCl)  
Lot#: Y23X01M11  
Chemical Formula: C<sub>25</sub>H<sub>32</sub>CIN<sub>3</sub>O<sub>2</sub>  
Exact Mass: 405.2416  
Molecular Weight: 442.0



11.27  
1.06

7.47  
7.45  
7.33  
7.31  
7.29  
7.29  
7.27  
7.27  
7.19  
7.17  
7.15  
6.96  
6.95  
6.87  
6.85  
7.99  
7.98  
1.95  
3.18  
1.07  
0.96  
1.04

3.92  
3.78  
3.74  
3.46  
3.45  
3.36  
4.03  
1.97  
2.18  
3.92  
3.13  
1.07

1.23  
1.21  
6.00

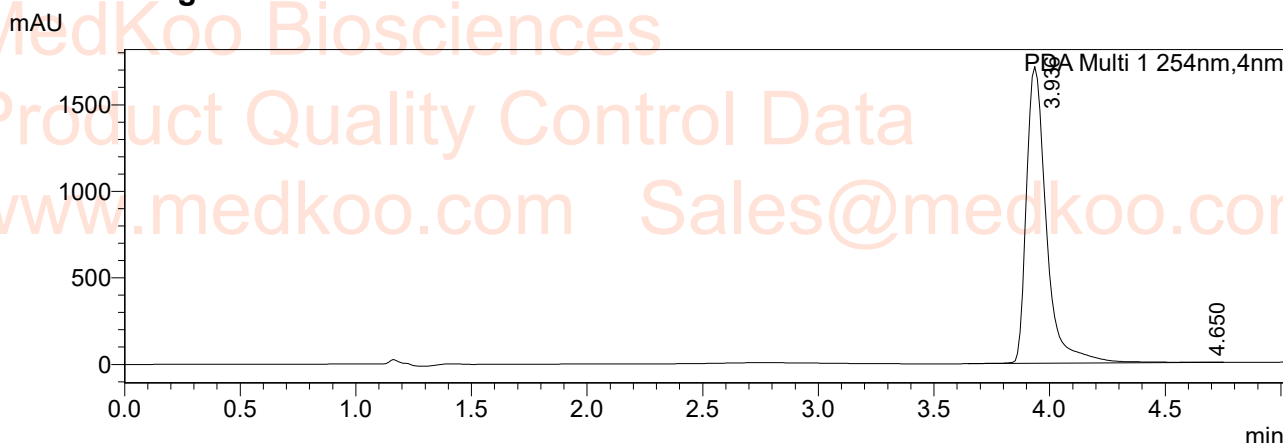
3.01  
2.97  
2.95  
2.94  
2.92  
2.90

# Befiperide HCl LC/MS Analysis

## <Sample Information>

Sample Name : Bef  
Sample ID : Bef  
Data Filename : Bef\_150\_004.lcd  
Method Filename : A01\_g\_b10b95\_t6\_f300.lcm  
Batch Filename : YYC\_Aug\_Table\_01.lcb  
Vial # : 1-133  
Injection Volume : 5 uL

## <Chromatogram>

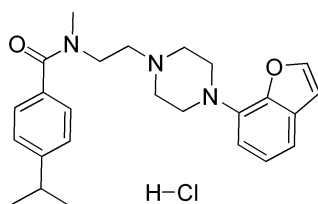
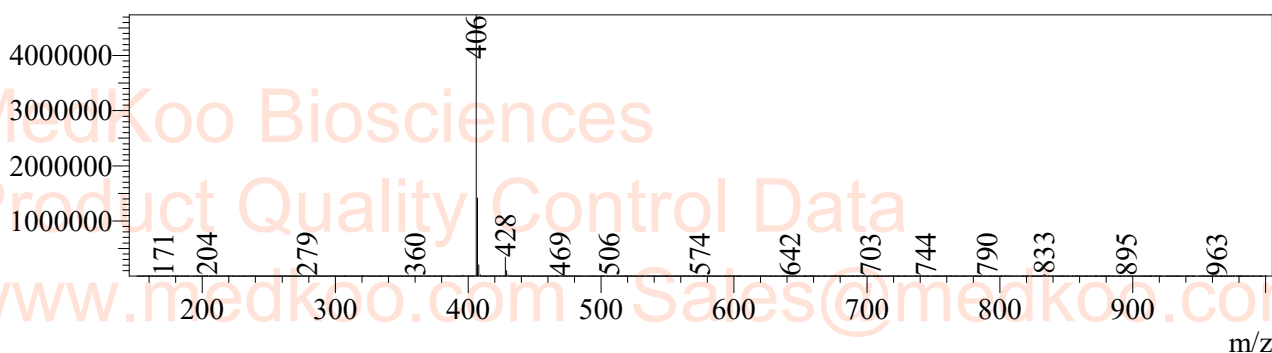


Peak Table

Peak#	Ret. Time	Peak Start	Peak End	Height	Area	Area%
1	3.936	3.648	4.747	1715715	10340440	99.979
2	4.650	4.565	4.747	351	2151	0.021
Total				1716066	10342591	100.000

MS Spectrum

R.Time:4.033(Scan#:243)  
MassPeaks:848  
Segment 1 - Event 1



MedKoo Cat#: 535057  
Name: Befiperide HCl  
CAS#: 2518226-56-5 (HCl)  
Lot#: Y23X01M11  
Chemical Formula: C<sub>25</sub>H<sub>32</sub>ClN<sub>3</sub>O<sub>2</sub>  
Exact Mass: 405.2416  
Molecular Weight: 442.0