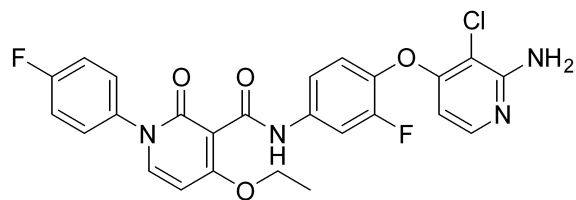


BMS-777607 HNMR Analysis, solvent: DMSO-d6

Product Quality Control Data

www.medkoo.com sales@medkoo.com



MedKoo Code#: 200527

Name: BMS-777607

CAS#: 1025720-94-8

Lot#: A20T02K29

Chemical Formula: C25H19ClF2N4O4

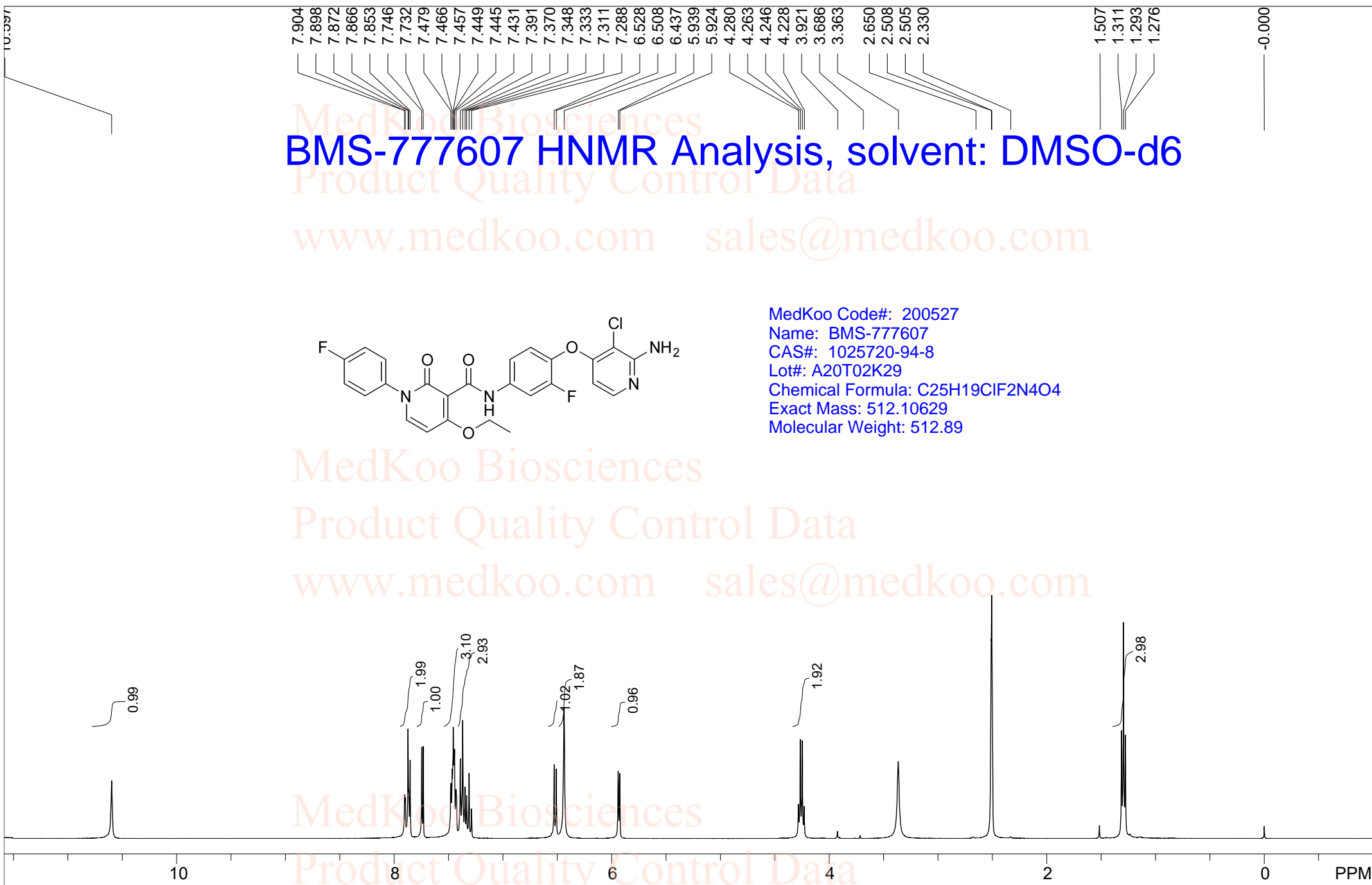
Exact Mass: 512.10629

Molecular Weight: 512.89

MedKoo Biosciences

Product Quality Control Data

www.medkoo.com sales@medkoo.com



F1: 400.130	F2: 1.000	SW1: 8224	OF1: 2469.8	PTS1d: 65536
EX: zg30	PD: 1.00	PW: 1.00 usec	LB: 0.3	

www.medkoo.com sales@medkoo.com

BMS-777607 HPLC Analysis

Sample Name : 1025720-94-8

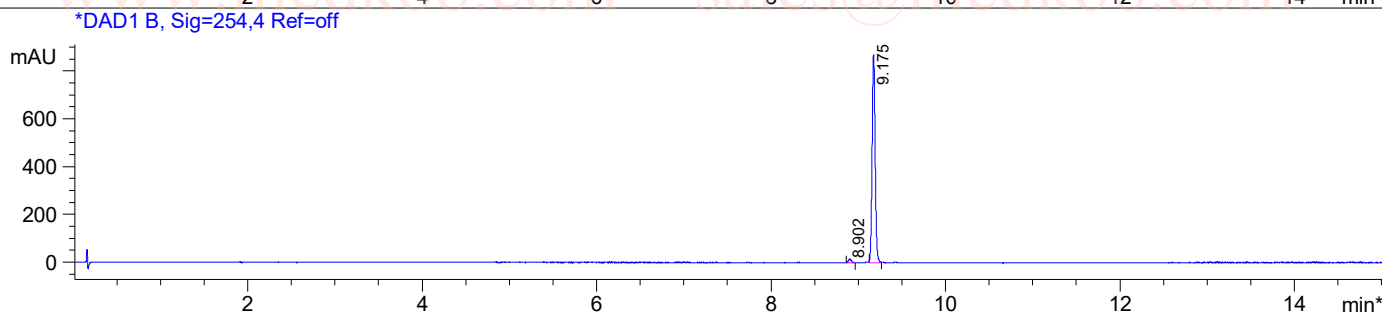
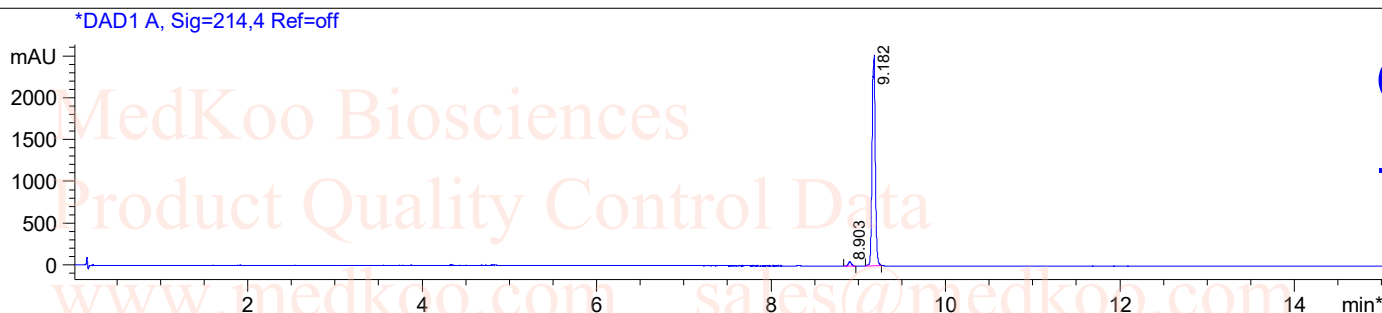
Method Info : Column: XBridge (4.6x 50 mm, 3.5um)

Mobile phase: H₂O (10 mmol NH₄HCO₃) (A) / ACN (B)

Elution program: Gradient from 10 to 95% of B in 1.4 min at 1.8 ml/min

Temperature: 50 °C

Detection: UV (214, 4 nm) and MS (ESI, Pos mode, 103 to 1000 amu)

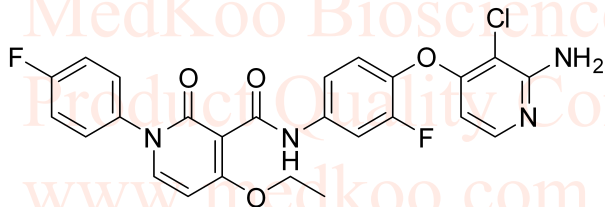


Integration Results for DAD1 A, Sig=214,4 Ref=off

RetTim	Width	Area	Height	Area%
8.90	0.03	123.99	50.70	1.90
9.18	0.03	6413.59	2521.91	98.10

Integration Results for DAD1 B, Sig=254,4 Ref=off

RetTim	Width	Area	Height	Area%
8.90	0.04	37.87	15.49	1.76
9.18	0.04	2108.51	868.77	98.24



MedKoo Code#: 200527

Name: BMS-777607

CAS#: 1025720-94-8

Lot#: A20T02K29

Chemical Formula: C₂₅H₁₉ClF₂N₄O₄

Exact Mass: 512.10629

Molecular Weight: 512.89

BMS-777607 LC/MS Analysis

Sample Name : 1025720-94-8

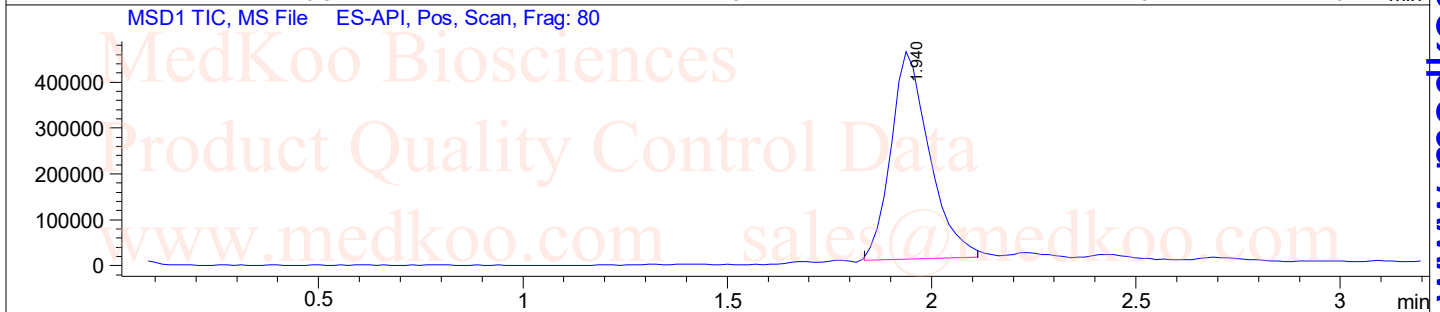
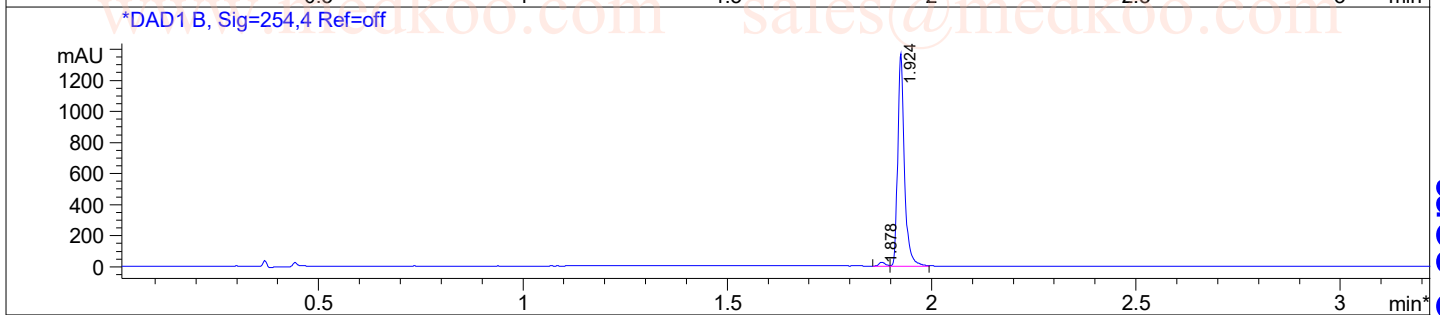
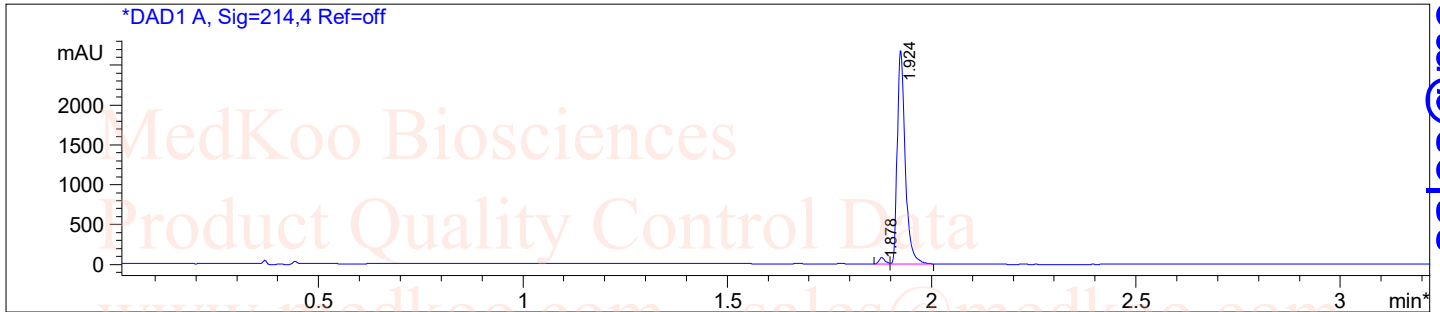
Method Info : Column: XBridge (4.6x 50 mm, 3.5um)

Mobile phase: H₂O (10 mmol NH₄HCO₃) (A) / ACN (B)

Elution program: Gradient from 10 to 95% of B in 1.4 min at 1.8 ml/min

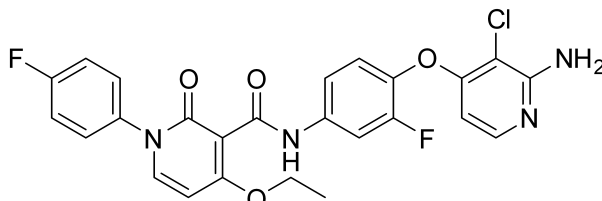
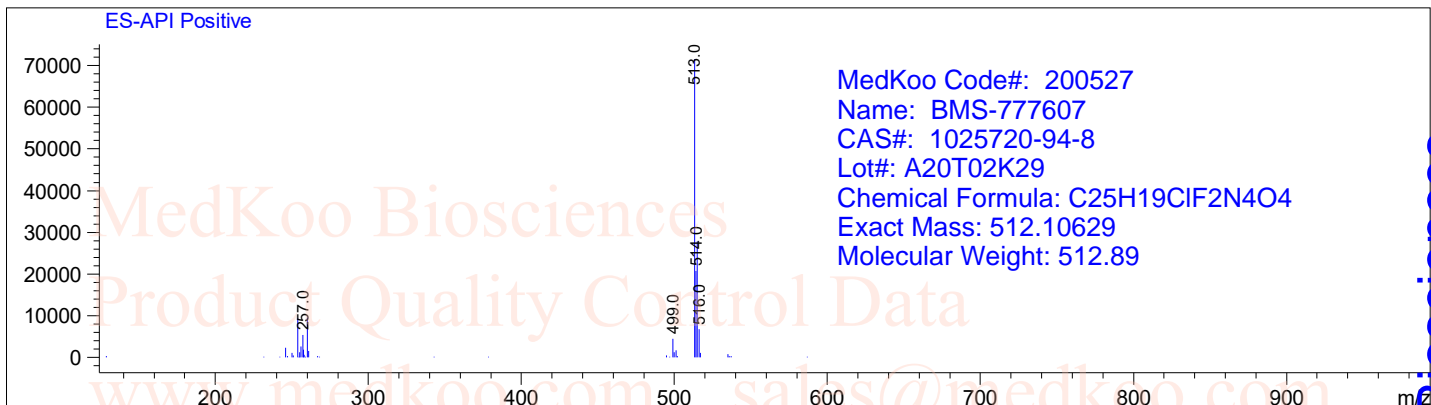
Temperature: 50 °C

Detection: UV (214, 4 nm) and MS (ESI, Pos mode, 103 to 1000 amu)



Ret. Time: 1.94

<<<< POSITIVE SPECTRA >>>>



sales@medkoo.com

www.medkoo.com

MedKoo Biosciences