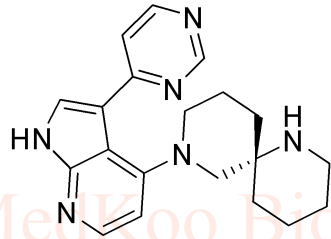


BDP9066 HNMR Analysis, Solvent: CDCl₃

MedKoo Biosciences

Product Quality Control Data

www.medkoo.com sales@medkoo.com



MedKoo Cat#: 563970

Name: BDP9066

CAS#: 2226507-04-4

Lot#: YXM210222

Chemical Formula: C₂₀H₂₄N₆

Exact Mass: 348.2062

Molecular Weight: 348.45

MedKoo Biosciences

Product Quality Control Data

www.medkoo.com sales@medkoo.com

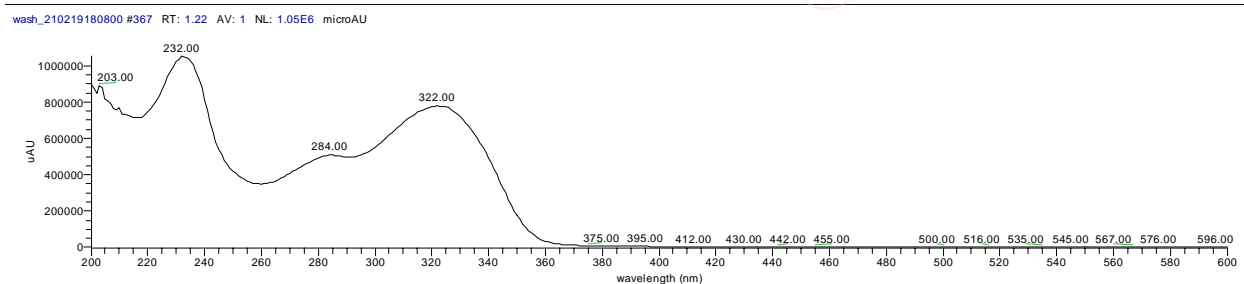
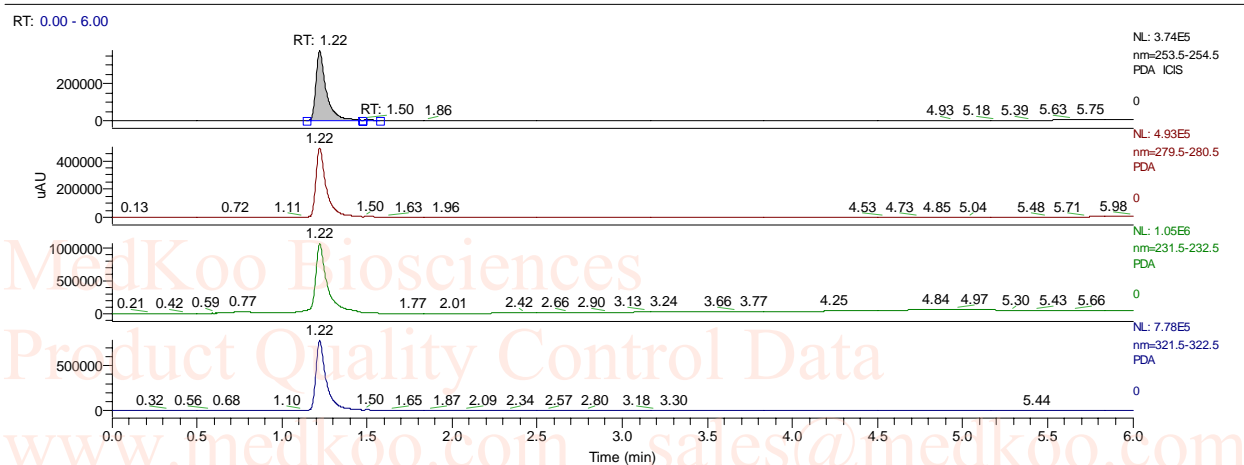


MedKoo Biosciences

www.medkoo.com

sales@medkoo.com

BDP9066 HPLC Analysis



PEAK

LIST

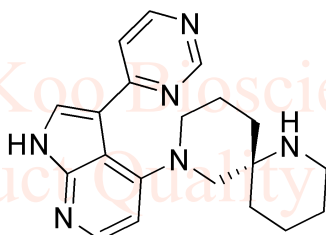
BDP9066.RAW

RT: 0.00 - 6.00

Number of detected peaks: 2

Apex

RT	Start RT	End RT	Area	%Area	Height	%Height
1.22	1.15	1.47	1598805	99.3	373603.6	99.31
1.5	1.47	1.58	11237.89	0.7	2604.899	0.69



MedKoo Cat#: 563970

Name: BDP9066

CAS#: 2226507-04-4

Lot#: YXM210222

Chemical Formula: C₂₀H₂₄N₆

Exact Mass: 348.2062

Molecular Weight: 348.45

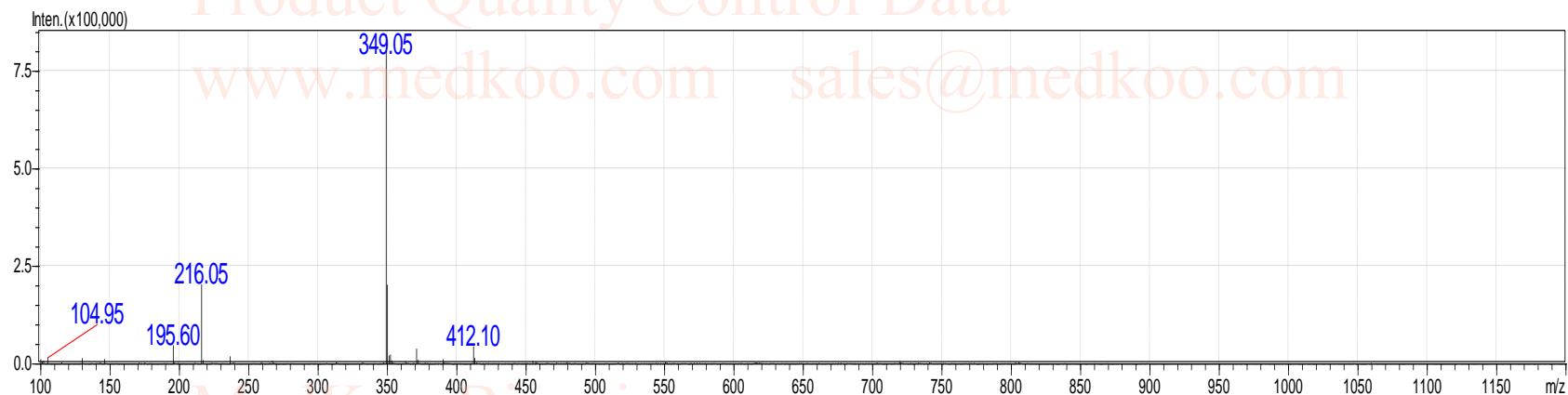
BDP9066 MS Analysis

MedKoo Biosciences

Product Quality Control Data

www.medkoo.com sales@medkoo.com

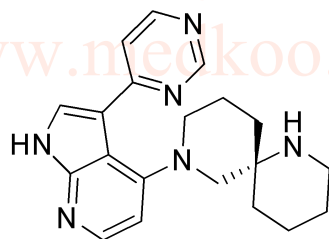
BDP9066, MS, [M+1]⁺:



MedKoo Biosciences

Product Quality Control Data

www.medkoo.com sales@medkoo.com



MedKoo Cat#: 563970

Name: BDP9066

CAS#: 2226507-04-4

Lot#: YXM210222

Chemical Formula: C₂₀H₂₄N₆

Exact Mass: 348.2062

Molecular Weight: 348.45

MedKoo Biosciences

Product Quality Control Data

www.medkoo.com sales@medkoo.com