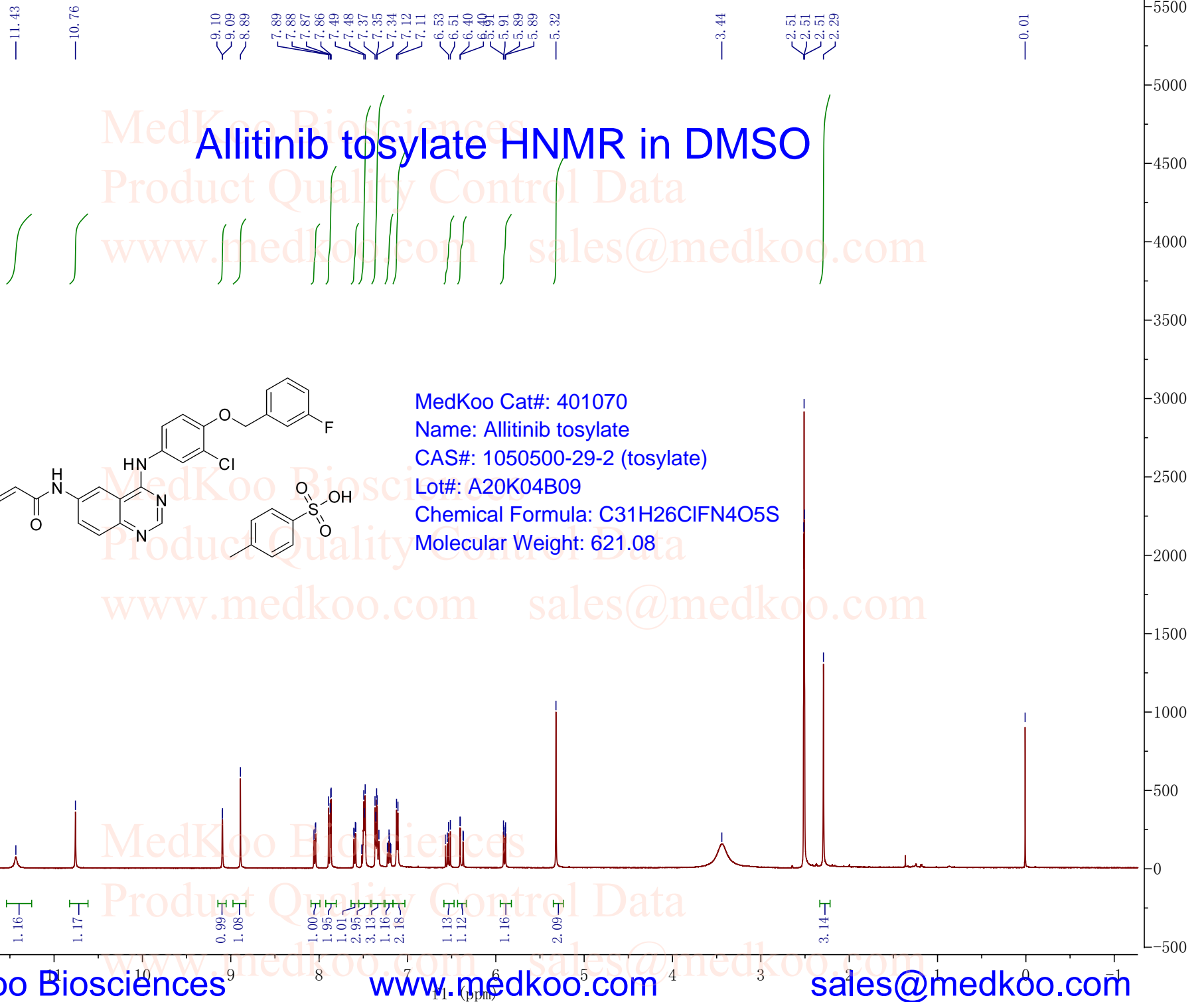
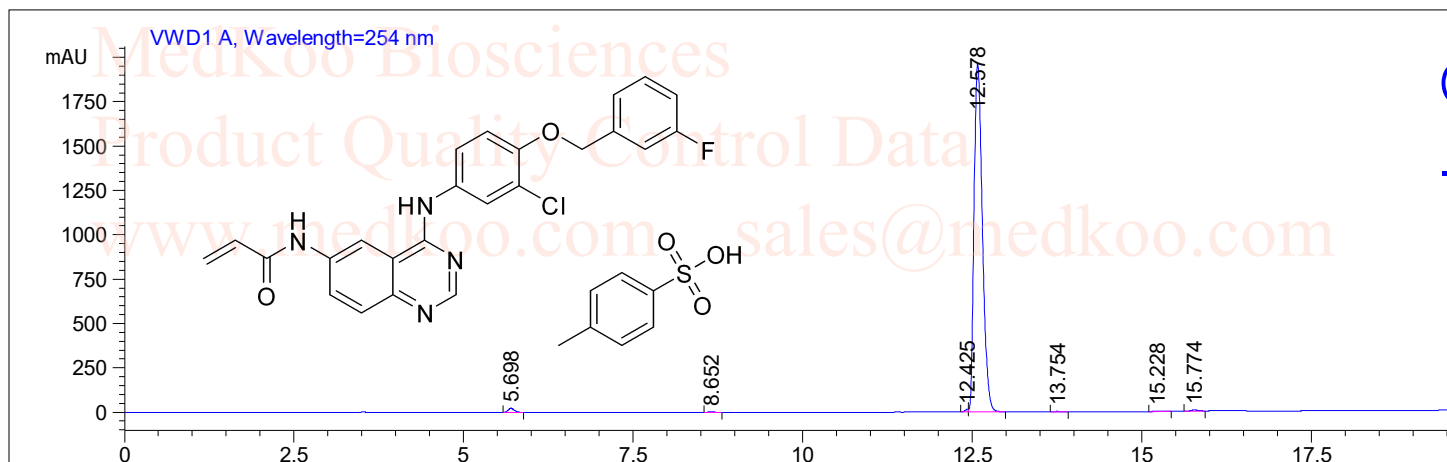


Name: Allitinib



Allitinib tosylate HPLC Analysis

=====
 Acq. Operator : System
 Acq. Instrument : instr1 Location : Vial 11
 Acq. Method : C:\CHEM32\1\METHODS\DEF_LC.M
 Analysis Method : C:\CHEM32\1\METHODS\DEF_LC.M



Area Percent Report

Sorted By : Signal
 Multiplier: : 1.0000
 Dilution: : 1.0000
 Do not use Multiplier & Dilution Factor with ISTDs

MedKoo Cat#: 401070
 Name: Allitinib tosylate
 CAS#: 1050500-29-2 (tosylate)
 Lot#: A20K04B09
 Chemical Formula: C31H26ClFN4O5S
 Molecular Weight: 621.08

Signal 1: VWD1 A, Wavelength=254 nm

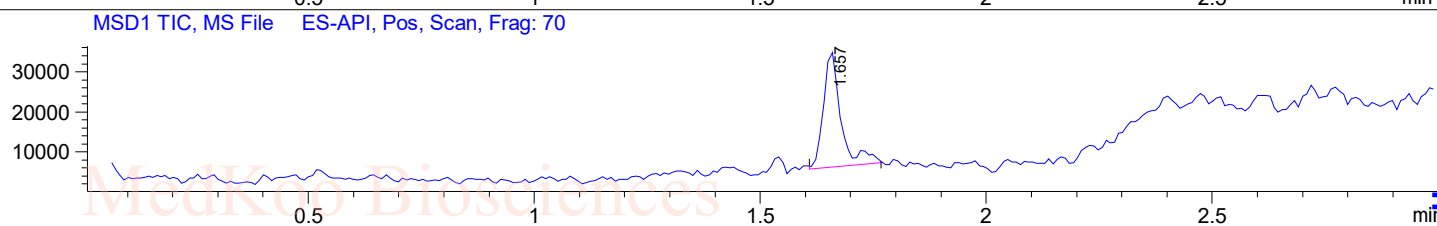
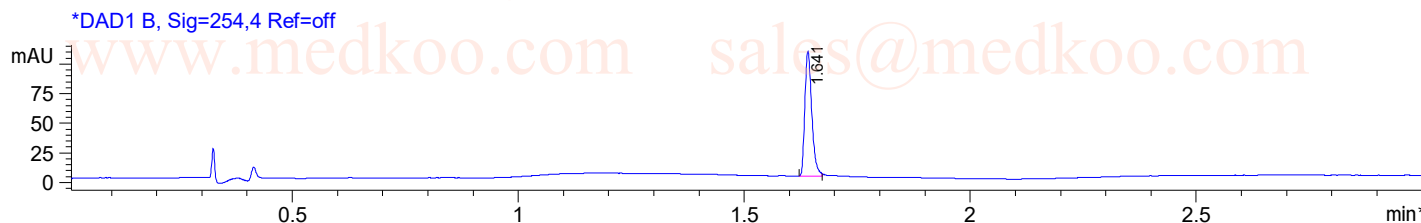
| Peak # | RetTime [min] | Type | Width [min] | Area mAU *s | Height [mAU] | Area % |
|--------|---------------|------|-------------|-------------|--------------|---------|
| 1 | 5.698 | BB | 0.0959 | 142.37833 | 22.86555 | 0.8347 |
| 2 | 8.652 | BB | 0.0894 | 21.98480 | 3.71483 | 0.1289 |
| 3 | 12.425 | BV | 0.0528 | 50.44872 | 14.84445 | 0.2958 |
| 4 | 12.578 | VB | 0.1344 | 1.67474e4 | 1965.05127 | 98.1843 |
| 5 | 13.754 | BB | 0.0917 | 11.97369 | 1.99834 | 0.0702 |
| 6 | 15.228 | BB | 0.1126 | 14.79019 | 1.99698 | 0.0867 |
| 7 | 15.774 | BV | 0.1390 | 68.13870 | 7.33044 | 0.3995 |

Totals : 1.70571e4 2017.80187

Allitinib tosylate LC/MS Analysis

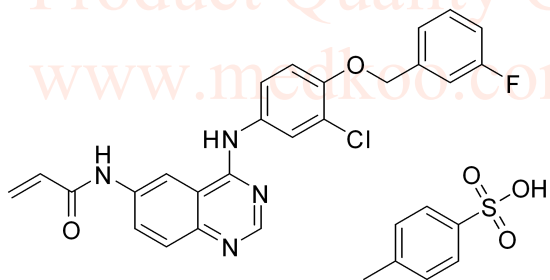
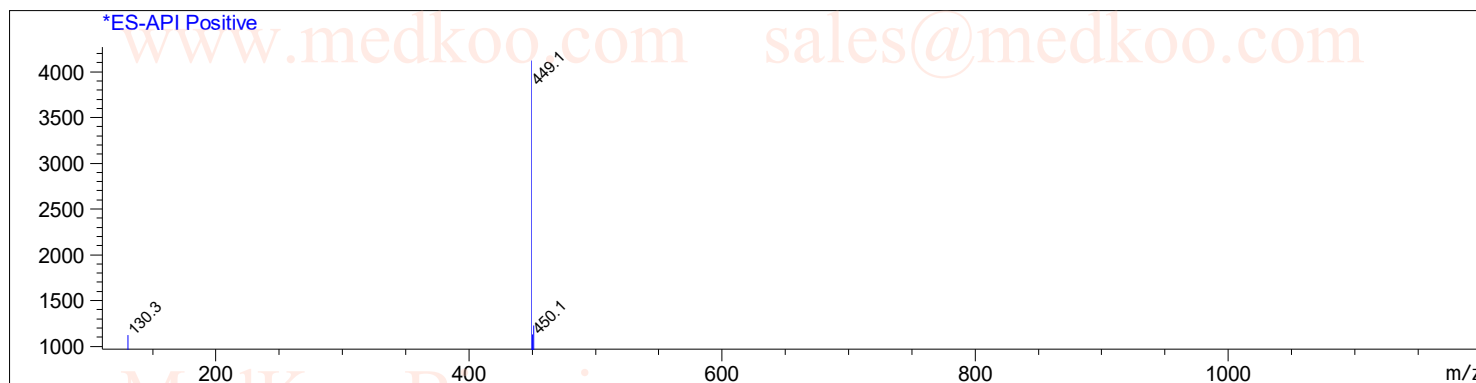
Sample Name : DQL-2
Acq. Operator : PREP
Spec. Reported : MS Integration
Acq. Method : D:\METHODS\1-POS-3MIN.M
Analysis Method : D:\METHODS\1-POS-3MIN.M
Sample Info : Easy-Access Method: '1-POS-3MIN.M' 365.00
Method Info : column:SUNFIRE C18 (4.6x 50 mm, 3.5um)
Mobile phase: H2O(0.01%TFA) (A) / ACN(0.01%TFA)(B)
Elution program: Gradient from 5 to 95% of B in 1.3min at 2.0ml/min
Temperature: 50 °C
Detection: UV (214 , 4 nm) and MS (ESI, Pos mode ,110 to 1000 amu)

Tgt Mass(EZX) : 365.00
Location : P2-F-04
Inj : 1
Inj Volume : 1 ul



Ret. Time: 1.66

<<<< POSITIVE SPECTRA >>>>



MedKoo Cat#: 401070

Name: Allitinib tosylate

CAS#: 1050500-29-2 (tosylate)

Lot#: A20K04B09

Chemical Formula: C₃₁H₂₆ClFN₄O₅S

Molecular Weight: 621.08